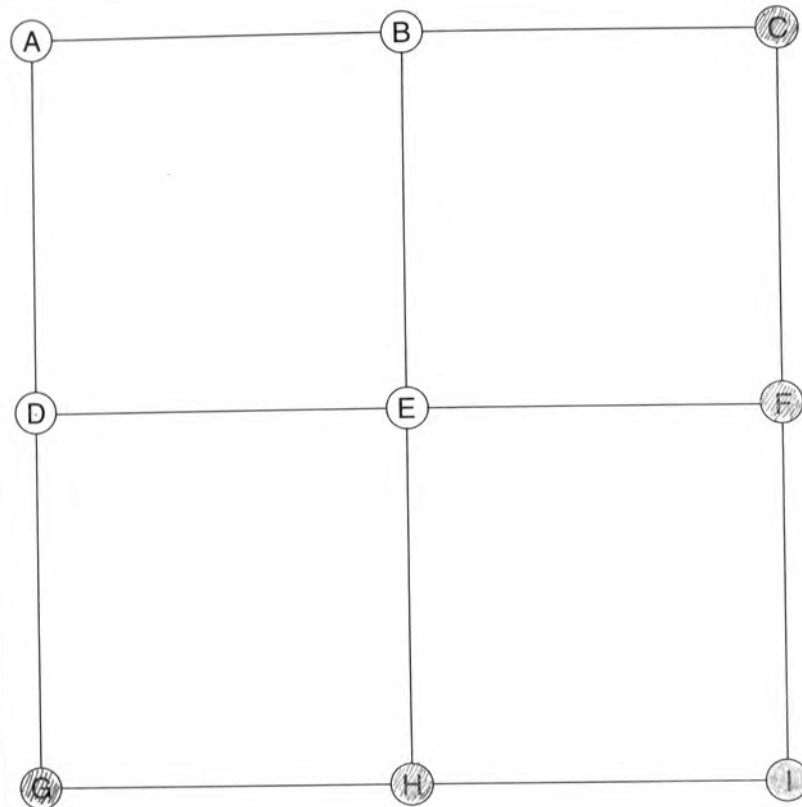


Prairie
19-33-5



A (NORTHWEST CORNER)

Date Located: _____
By: _____
Monument Description: _____
Monument Witnesses: _____

Field Book: _____ Page: _____

B (NORTH QUARTER CORNER)

Date Located: _____
By: _____
Monument Description: _____
Monument Witnesses: _____

Field Book: _____ Page: _____

C (NORTHEAST CORNER)

Date Located: 5/1/17
By: SEM
Monument Description: FO RR SPIKE FLUSH
Monument Witnesses: SEE Pg 294 "G"

Field Book: 6 Page: 72

D (WEST QUARTER CORNER)

Date Located: _____
By: _____
Monument Description: _____
Monument Witnesses: _____

Field Book: _____ Page: _____

E (CENTER OF SECTION)

Date Located: _____
By: _____
Monument Description: _____
Monument Witnesses: _____

Field Book: _____ Page: _____

F (EAST QUARTER CORNER)

Date Located: 10/24/17
By: SEM
Monument Description: FO PK NAIL REPLACED WITH RR SPIKE
Monument Witnesses: SEE Pg 297 "D"

Field Book: 8 Page: 16

G (SOUTHWEST CORNER)

Date Located: 7/12/16
By: SEM
Monument Description: FO RR SPIKE FLUSH
Monument Witnesses: SEE Pg 307 "A"

Field Book: 4 Page: 28

H (SOUTH QUARTER CORNER)

Date Located: 2/8/17
By: SEM
Monument Description: FO MAG NAIL
Monument Witnesses: 1/2" REBAR W/GAP NW 24.74'
4 RR RAIL FENCE POST ENE 27.8'
NAIL IN TAG IN POWER POLE NE 54.90'

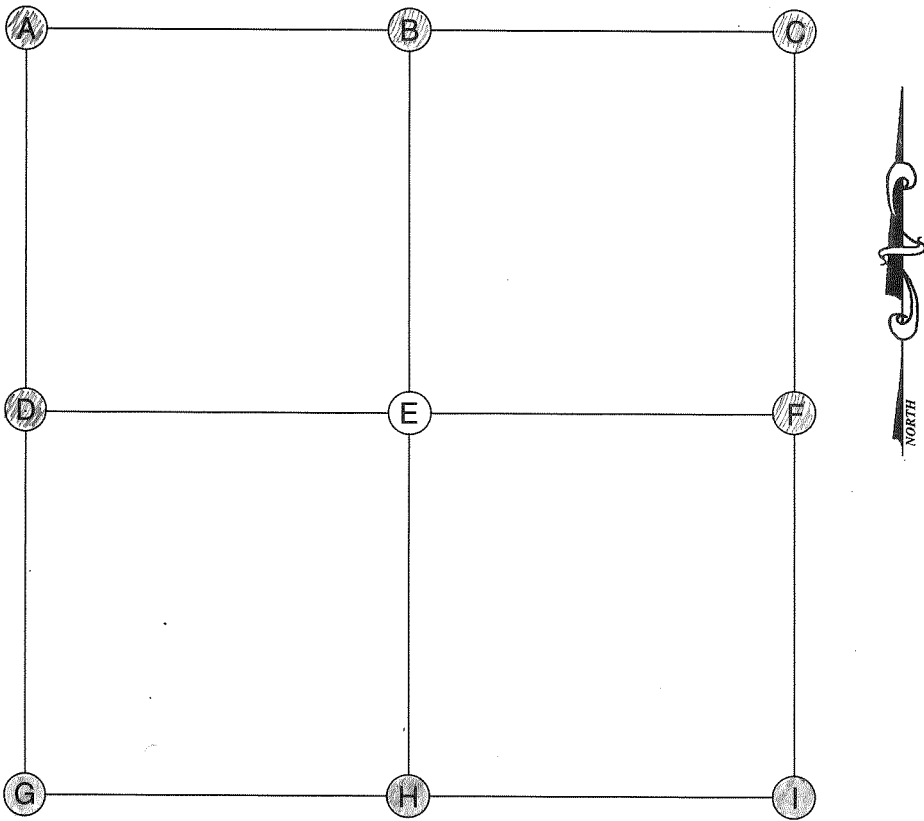
Field Book: 5 Page: 71

I (SOUTHEAST CORNER)

Date Located: _____
By: _____
Monument Description: _____
Monument Witnesses: SEE PAGE 307 "C"
NE COR. 30-33-5

Field Book: _____ Page: _____

ADDITIONAL NOTES



E (CENTER OF SECTION)

Date Located: _____
By: _____
Monument Description: _____
Monument Witnesses: _____

Field Book: _____ Page: _____

F (EAST QUARTER CORNER)

Date Located: 2/16/17
By: JEM
Monument Description: FO RR SPIKE 4" DEEP
Monument Witnesses: 1/2" REBAR w/CAP NW 28.63'
NAIL IN TAG IN POWER POLE NE 37.26'
NW CORNER OF HOUSE E 38.7'
E O'DA STEEL FCP W 18.50'

Field Book: 6 Page: 12

A (NORTHWEST CORNER)

Date Located: 5/1/17
By: SRM
Monument Description: FOR SPIKE FLUSH
Monument Witnesses: SEE Pg 294 "G"

Field Book: 6 Page: 72

G (SOUTHWEST CORNER)

Date Located: _____
By: _____
Monument Description: _____
Monument Witnesses: SEE PAGE 307 "C"
NE COR. 30-33-5

Field Book: _____ Page: _____

B (NORTH QUARTER CORNER)

Date Located: 2/16/17
By: JEM
Monument Description: FOUR RAIL FCP
Monument Witnesses: _____

Field Book: 6 Page: 11

H (SOUTH QUARTER CORNER)

Date Located: _____
By: _____
Monument Description: _____
Monument Witnesses: SEE PAGE 306 "B"
N/4 Post 29-33-5

Field Book: _____ Page: _____

C (NORTHEAST CORNER)

Date Located: 10/6/15
By: DR MOYER
Monument Description: FD PK NAIL 2" DEEP
Monument Witnesses: SEE Pg 293 "G"

Field Book: 3 Page: 23

I (SOUTHEAST CORNER)

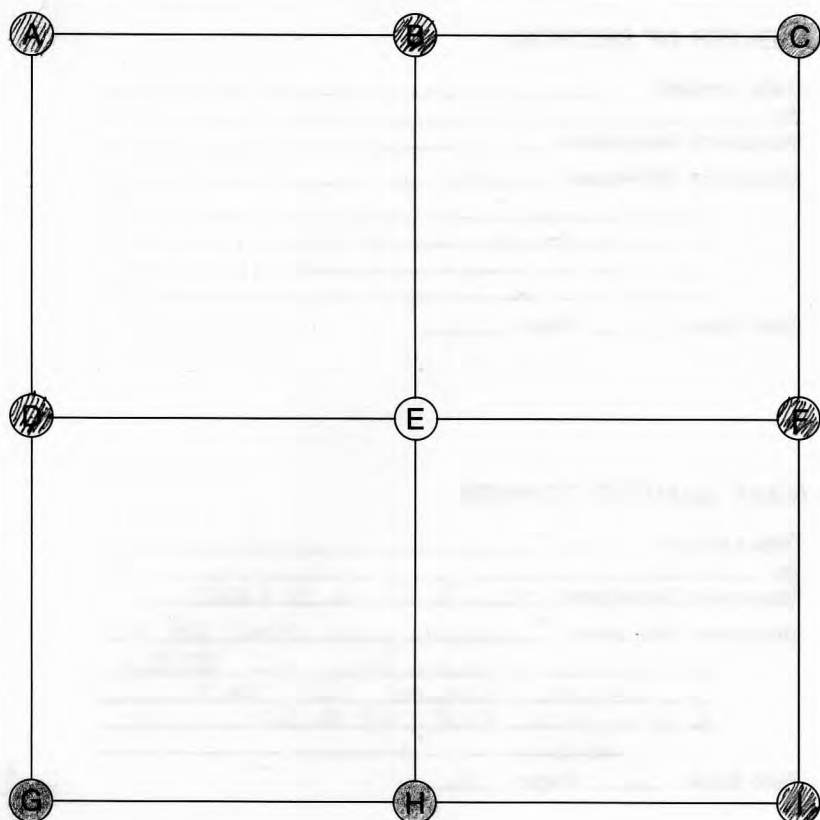
Date Located: _____
By: _____
Monument Description: _____
Monument Witnesses: SEE PAGE 306 "C"
NE COR. 29-33-5

Field Book: _____ Page: _____

D (WEST QUARTER CORNER)

Date Located: 10/24/17
By: JRM
Monument Description: FO PK NAIL REPLACED WITH RR SPIKE
Monument Witnesses: 1/2" BEAR W/CAP SW 36.05'
1/2" RR RAIL FCP W 20.41'
1/2" RR RAIL FCP E 20.47'
NAIL IN B. CAP IN P POLE SE 27.79'
Field Book: 8 Page: 16

ADDITIONAL NOTES



A (NORTHWEST CORNER)

Date Located: 10/6/15
 By: SR MOYER
 Monument Description: FO PK NAIL 2" DEEP
 Monument Witnesses: SEE Pg 293 "G"

Field Book: 3 Page: 23

B (NORTH QUARTER CORNER)

Date Located: 2/13/18
 By: SRM
 Monument Description: _____
 Monument Witnesses: _____

Field Book: 8 Page: 69

C (NORTHEAST CORNER)

Date Located: 4/20/18
 By: SRM
 Monument Description: FO RR SPIKE 2" DEEP
 Monument Witnesses: RR RAIL FCP W 20.25'
1/2" REBAR w/CAP NW 34.25'
1/2" REBAR w/CAP NE 53.37'
NAIL IN B. CAP IN POWER POLE SSE 57.91'

Field Book: 9 Page: 42

D (WEST QUARTER CORNER)

Date Located: 2/16/17
 By: SRM
 Monument Description: FO RR SPIKE 4" DEEP
 Monument Witnesses: SEE Pg 297 "F"

Field Book: 6 Page: 12

E (CENTER OF SECTION)

Date Located: _____
 By: _____
 Monument Description: _____
 Monument Witnesses: _____

Field Book: _____ Page: _____

F (EAST QUARTER CORNER)

Date Located: 4/20/18
 By: SRM
 Monument Description: FO RR SPIKE 2" DEEP
 Monument Witnesses: NAIL IN B. CAP POWER POLE WSW 19.60'
RR RAIL FCP W 20.0'
1/2" REBAR w/CAP NE 42.16'
1/2" REBAR w/CAP SE 39.02'

Field Book: 9 Page: 41

G (SOUTHWEST CORNER)

Date Located: _____
 By: _____
 Monument Description: _____
 Monument Witnesses: SEE PAGE 306 "C"
NE COR. 29-33-5

Field Book: _____ Page: _____

H (SOUTH QUARTER CORNER)

Date Located: _____
 By: _____
 Monument Description: _____
 Monument Witnesses: SEE PAGE 305 "B"
N 1/4 Post 28-33-5

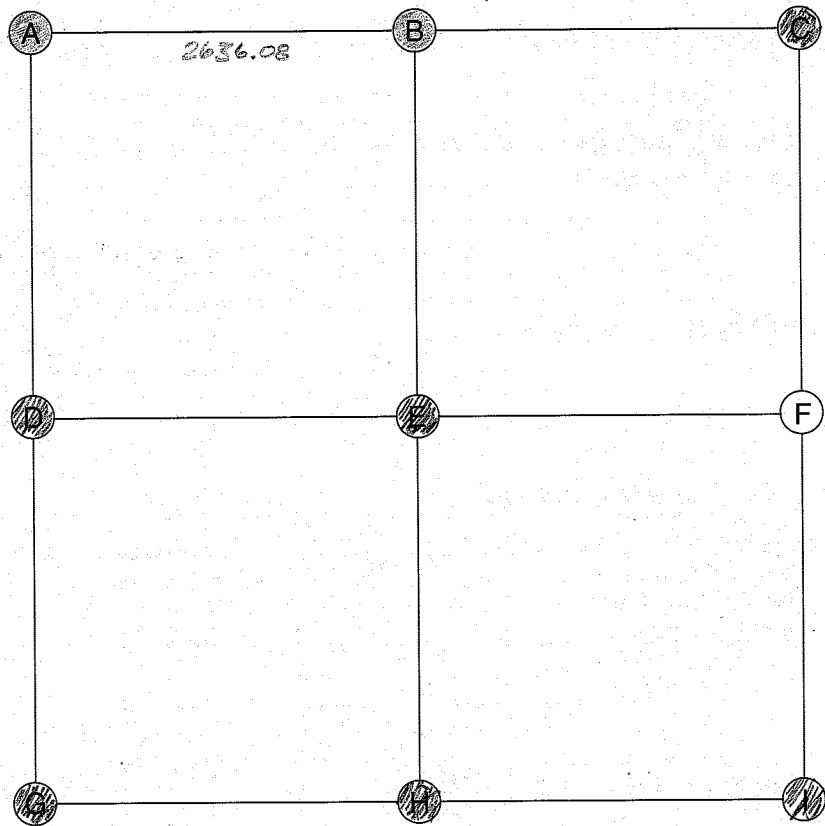
Field Book: _____ Page: _____

I (SOUTHEAST CORNER)

Date Located: 3/21/18
 By: SRM
 Monument Description: FO BRONZE MONUMENT
 Monument Witnesses: SEE Pg 304 "A"

Field Book: 9 Page: 14

ADDITIONAL NOTES



E (CENTER OF SECTION)

Date Located: 9/8/16
By: SEM
Monument Description: FO RR SPIKE 4" DEEP
Monument Witnesses: 1/2" REBAR w/CAP NW 28.07'
NAIL IN B. CAP IN P POLE ENE 27.68'
1/2" REBAR w/CAP SW 28.29'

Field Book: 4 Page: 61

F (EAST QUARTER CORNER)

Date Located: _____
By: _____
Monument Description: _____
Monument Witnesses: _____

Field Book: _____ Page: _____

G (SOUTHWEST CORNER)

Date Located: 3/21/18
By: SEM
Monument Description: FO BRONZE MONUMENT
Monument Witnesses: SEE Pg 304 "A"

Field Book: 9 Page: 14

A (NORTHWEST CORNER)

Date Located: 4/20/18
By: SEM
Monument Description: FO RR SPIKE 2" DEEP
Monument Witnesses: 1/2" REBAR w/CAP NW 34.25'
1/2" REBAR w/CAP NE 53.37'
NAIL IN B. CAP POWER POLE SSE 57.91'

Field Book: 9 Page: 42

B (NORTH QUARTER CORNER)

Date Located: 9/8/16
By: SEM
Monument Description: FO RR SPIKE 2" DEEP
Monument Witnesses: 1/2" REBAR w/CAP NE 19.20'
NAIL IN B. CAP IN P POLE SE 44.72'
NEAREST EDGE RR FCP SE 34.65'
NAIL IN B. CAP IN P POLE SSW 64.62'

Field Book: 4 Page: 62

H (SOUTH QUARTER CORNER)

Date Located: 4/24/19
By: SEM MWH
Monument Description: RR SPIKE
Monument Witnesses: NAIL IN B. CAP POWER POLE NW 52.06'
1/2" REBAR w/CAP NE 29.04'

Field Book: 13 Page: 41

C (NORTHEAST CORNER)

Date Located: 4/24/19
By: SEM MWH
Monument Description: BRONZE MONUMENT
Monument Witnesses: SEE Pg 291 "G"

Field Book: 13 Page: 40

I (SOUTHEAST CORNER)

Date Located: 1/2/19
By: SEM
Monument Description: FO BRONZE MONUMENT
Monument Witnesses: SEE Pg 304 "C"

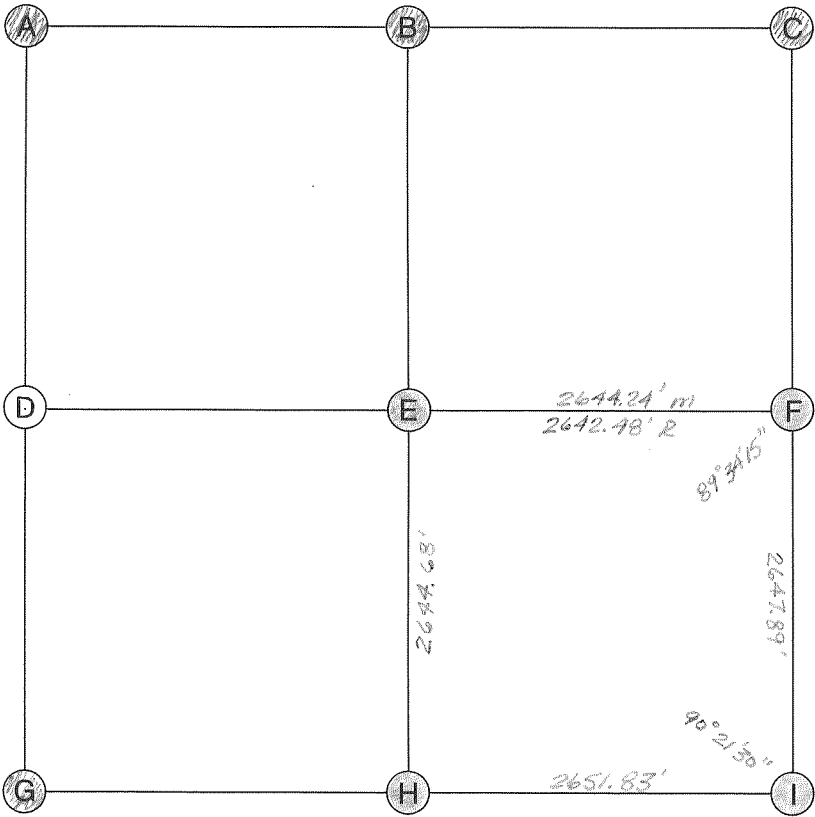
Field Book: 11 Page: 54

D (WEST QUARTER CORNER)

Date Located: 4/20/18
By: SEM
Monument Description: FO RR SPIKE 2" DEEP
Monument Witnesses: NAIL IN B. CAP POWER POLE WSW 19.60'
1/2" REBAR w/CAP NE 42.16'
1/2" REBAR w/CAP SE 39.02'

Field Book: 9 Page: 41

ADDITIONAL NOTES



E (CENTER OF SECTION)

Date Located: 7/12/99 10/8/20
By: MEK SEM MWH
Monument Description: Railroad Red Post (Found)
Monument Witnesses:

Field Book: 9 Page: 51

F (EAST QUARTER CORNER)

Date Located: 7/12/99 8/16/18
By: MEK SEM
Monument Description: PK Nail (Found)
Monument Witnesses: RIP 30' WEST

Field Book: 10 Page: 64

G (SOUTHWEST CORNER)

Date Located: 1/2/19
By: SEM
Monument Description: FB BRONZE MONUMENT
Monument Witnesses: SEE Pg 304 "C"

Field Book: 11 Page: 54

H (SOUTH QUARTER CORNER)

Date Located: 7/12/99 (Found) 4/24/19 SEM MWH
By: MEK
Monument Description: Railroad Spike
Monument Witnesses: OLD TIES AS FOLLOWS:
- 3/4" I.P. 31.7' SE
- EDGE RIP 22.5' S
- BROKEN FENCE POST BRKIE 20.85' N

Field Book: 13 Page: 42

I (SOUTHEAST CORNER)

Date Located: 7/12/99 (Found)
By: MEK
Monument Description: BRONZE/COPPER MARKER
Monument Witnesses: OLD TIES AS FOLLOWS:
- EDGE RIP 25.6' SW
- " " 35.1' NW
- " " 30.0' NW
- " HWY SIGN POST 30.1' SE

Field Book: 10 Page: 63 UPDATED 8/14/18 SEM

ADDITIONAL NOTES

A (NORTHWEST CORNER)

Date Located: 4/24/19
By: SEM MWH
Monument Description: BRONZE MONUMENT
Monument Witnesses: SEE Pg 291 "G"

Field Book: 13 Page: 40

B (NORTH QUARTER CORNER)

Date Located: 4/24/19
By: SEM MWH
Monument Description: MAG NAIL W/CO TAG
Monument Witnesses: SEE Pg 291 "H"

Field Book: 13 Page: 39

C (NORTHEAST CORNER)

Date Located: 8/16/18
By: SEM
Monument Description: MAG NAIL W/CO TAG
Monument Witnesses: 1/2" REBAR W/CAP SW 36.34'
NAIL IN B.CAP IN POWER POLE SE 46.06'
NAIL IN B.CAP IN PILE POLE SSW 70.73'

Field Book: 10 Page: 65

D (WEST QUARTER CORNER)

Date Located:
By:
Monument Description:
Monument Witnesses:

Field Book: Page:



Date Located: 8/14/18
By: SRM
Monument Description: SEE "I" PAGE 300
Monument Witnesses: SE COR 23-33-5

Field Book: 10 Page: 63

B (NORTH QUARTER CORNER)

Date Located: _____
By: _____
Monument Description: _____
Monument Witnesses: _____

Field Book: _____ Page: _____

C (NORTHEAST CORNER)

Date Located: _____
By: _____
Monument Description: _____
Monument Witnesses: SEE PAGE 271 "A"
NW COR 30-33-6

Field Book: _____ Page: _____

D (WEST QUARTER CORNER)

Date Located: 8/13/92
By: JR MOYER - EC HAINES
Monument Description: RR SPIRE
Monument Witnesses: E. FACE OF 8" DIA CONC. FCP W 21.54
W. FACE OF 2" DIA STEEL FCP E 20.67

Field Book: 2 Page: 48 UPDATED 8/16/18 SRM

E (CENTER OF SECTION)

Date Located: _____
By: _____
Monument Description: _____
Monument Witnesses: _____

Field Book: _____ Page: _____

F (EAST QUARTER CORNER)

Date Located: 8/14/18
By: JRM
Monument Description: FO ER SPIKE FLUSH
Monument Witnesses: SEE PG 271 "D"

Field Book: 10 Page: 62

G (SOUTHWEST CORNER)

Date Located: 7/25/17
By: SRM
Monument Description: FO MAG NAIL
Monument Witnesses: SEE PG 313 "A"

Field Book: 7 Page: 38

H (SOUTH QUARTER CORNER)

Date Located: 7/25/17
By: SEM
Monument Description: FD 5/8 REBAR 6" DEEP
Monument Witnesses: SEE Pg 313 "B"

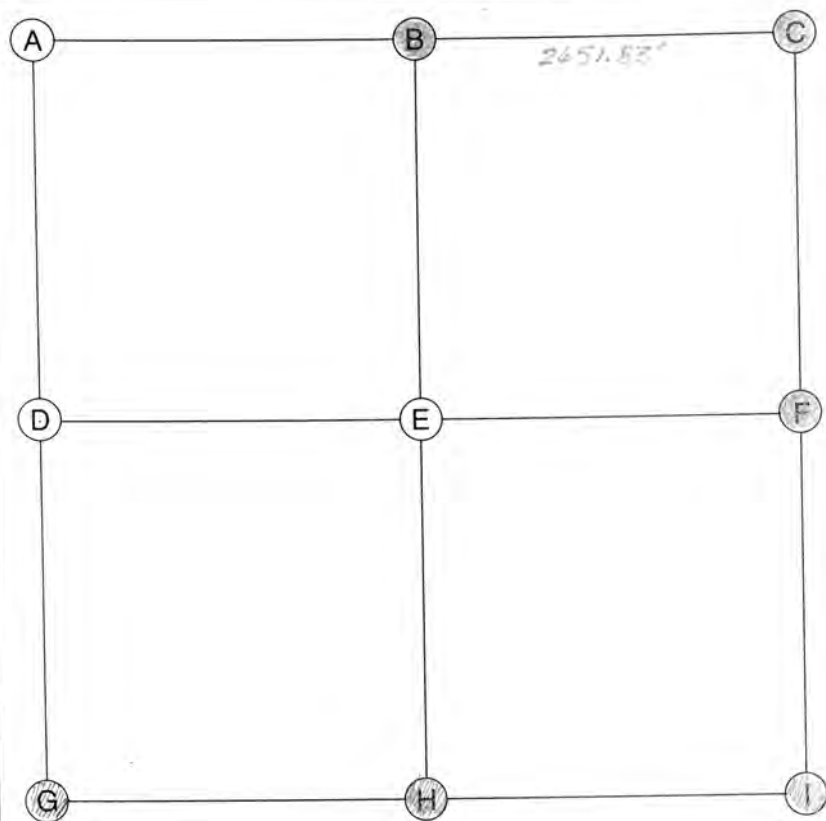
Field Book: 7 Page: 39

I (SOUTHEAST CORNER)

Date Located: _____
By: _____
Monument Description: _____
Monument Witnesses: SEE Pg 272 "A"
NW COR 31-33-6

Field Book: _____ Page: _____

ADDITIONAL NOTES



A (NORTHWEST CORNER)

Date Located: _____
 By: _____
 Monument Description: _____
 Monument Witnesses: _____

Field Book: _____ Page: _____

B (NORTH QUARTER CORNER)

Date Located: _____
 By: _____
 Monument Description: SEE "H" PAGE 300
 Monument Witnesses: 5/4 POST 23-33-5

Field Book: _____ Page: _____

C (NORTHEAST CORNER)

Date Located: _____
 By: _____
 Monument Description: SEE "I" PAGE 300
 Monument Witnesses: SE COR. 23-33-5

Field Book: _____ Page: _____

D (WEST QUARTER CORNER)

Date Located: _____
 By: _____
 Monument Description: _____
 Monument Witnesses: _____

Field Book: _____ Page: _____

E (CENTER OF SECTION)

Date Located: _____
 By: _____
 Monument Description: _____
 Monument Witnesses: _____

Field Book: _____ Page: _____

F (EAST QUARTER CORNER)

Date Located: _____
 By: _____
 Monument Description: SEE PAGE 302 "D"
 Monument Witnesses: W/4 POST 25-33-5

Field Book: _____ Page: _____

G (SOUTHWEST CORNER)

Date Located: 3/9/17
 By: SEM
 Monument Description: FO RR SPIKE
 Monument Witnesses: SEE Pg 304 "I"

Field Book: 3 Page: 31

H (SOUTH QUARTER CORNER)

Date Located: 3/13/16
 By: SR MOYER
 Monument Description: RR SPIKE
 Monument Witnesses: SEE Pg 312 "B"

Field Book: 3 Page: 53

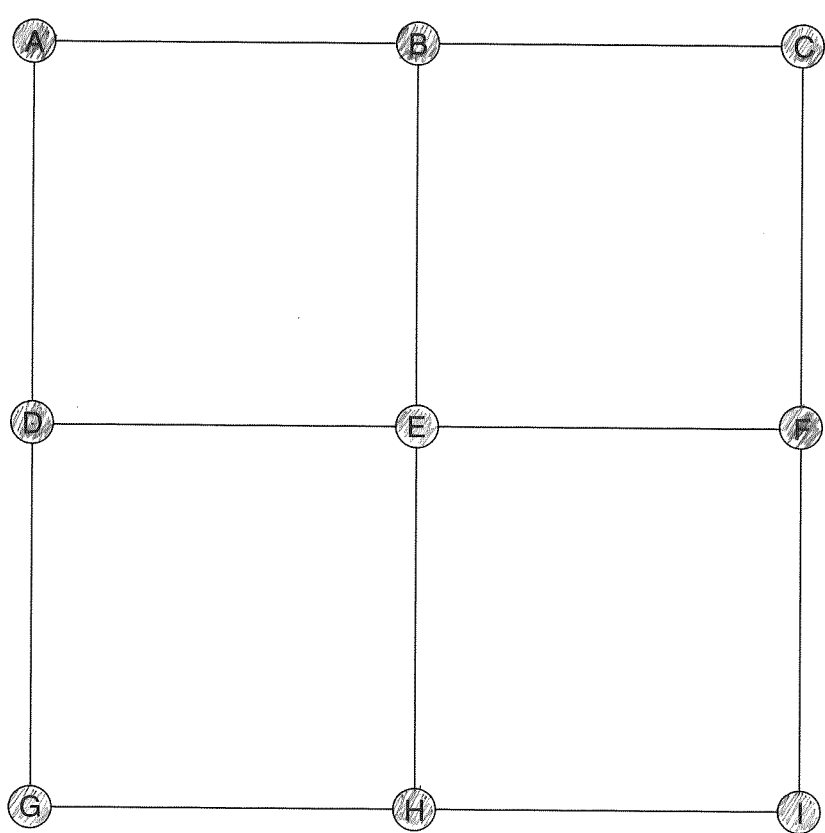
I (SOUTHEAST CORNER)

Date Located: 7/25/17
 By: SEM
 Monument Description: FO MAG NAIL
 Monument Witnesses: SEE Pg 313 "A"

Field Book: 7 Page: 38

ADDITIONAL NOTES

Prairie
27-33-5



E (CENTER OF SECTION)

Date Located: 11/18/20
By: SEMOYER
Monument Description: RR RAIL FCP
Monument Witnesses: _____

Field Book: 19 Page: 70

F (EAST QUARTER CORNER)

Date Located: 1/2/19
By: SEM
Monument Description: FO MAG NAIL OVER I.P. PIPE
Monument Witnesses: 1/2" REBAR No CAP W 15.15'
1/2" REBAR w/CAP E 15.15'
1/2" REBAR w/CAP SW 39.40'

Field Book: 11 Page: 55

G (SOUTHWEST CORNER)

Date Located: 3/9/17
By: SEM
Monument Description: FO PK NAIL 2" DEEP
Monument Witnesses: NAIL IN TAG IN P. POLE ENE 71.25'
NAIL IN TAG IN P. POLE SE 58.92'
FACE OF A 10" CONE FCP W 20.03'

Field Book: 6 Page: 33

H (SOUTH QUARTER CORNER)

Date Located: 3/9/17
By: SEM
Monument Description: FO RR SPIKE FLUSH
Monument Witnesses: 1/2" REBAR w/CAP SE 27.68'
1/2" RR RAIL FCP S 33.25'
1/2" REBAR w/CAP SW 30.79'

Field Book: 6 Page: 32

I (SOUTHEAST CORNER)

Date Located: 3/9/17
By: SEM
Monument Description: FO RR SPIKE FLUSH
Monument Witnesses: NAIL IN TAG IN P. POLE NW 31.26'
1/2" RR RAIL FCP NW 26.8'
1/2" REBAR w/CAP ENE 41.86'
1/2" REBAR w/CAP SE 24.72'

Field Book: 6 Page: 31

A (NORTHWEST CORNER)

Date Located: 3/21/18
By: SEM
Monument Description: FO BRONZE MARKER
Monument Witnesses: 1/2" REBAR w/CAP SW 36.05'
1/2" REBAR w/CAP NW 44.34'
1/2" REBAR w/CAP NE 36.91'

Field Book: 9 Page: 14

B (NORTH QUARTER CORNER)

Date Located: 4/24/19
By: SEM MW4
Monument Description: RR SPIKE
Monument Witnesses: SEE Pg 299 "H"

Field Book: 13 Page: 41

C (NORTHEAST CORNER)

Date Located: 1/2/19
By: SEM
Monument Description: FO BRONZE MONUMENT
Monument Witnesses: 1/2" REBAR w/CAP NW 43.13'
1/2" REBAR w/CAP SW 36.15'

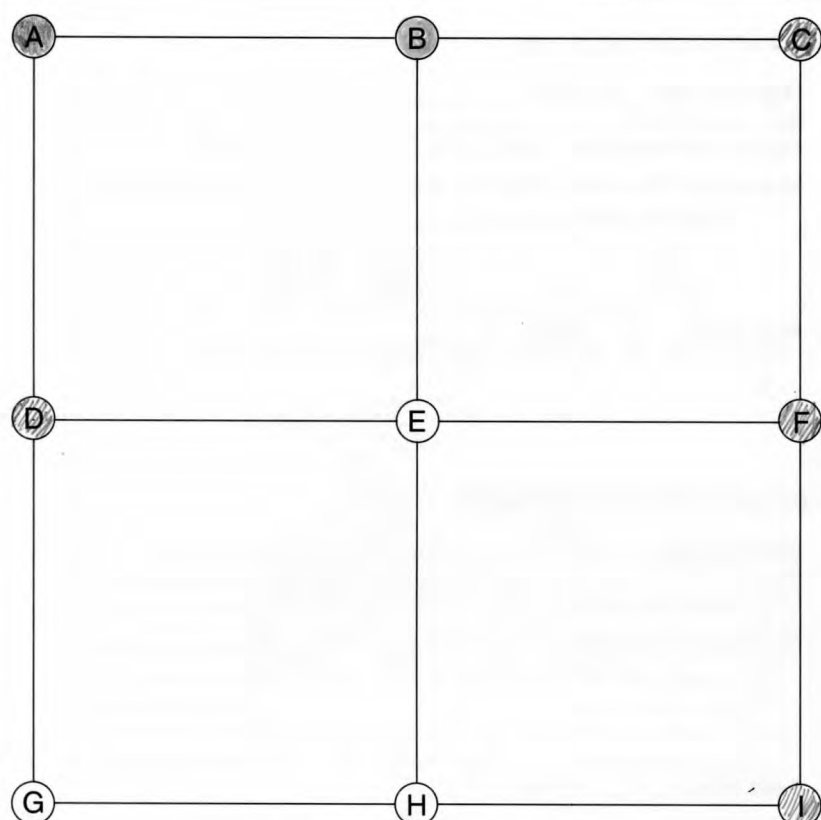
Field Book: 11 Page: 54

D (WEST QUARTER CORNER)

Date Located: 3/21/18
By: SEM
Monument Description: FO PK NAIL
Monument Witnesses: 1/2" REBAR w/CAP W 28.68'
1/2" REBAR w/CAP NE 32.81'
NAIL IN B. CAP POWER POLE SE 59.29'

Field Book: 9 Page: 13

ADDITIONAL NOTES



E (CENTER OF SECTION)

Date Located: _____
 By: _____
 Monument Description: _____
 Monument Witnesses: _____

Field Book: _____ Page: _____

F (EAST QUARTER CORNER)

Date Located: 3/21/18
 By: SRM
 Monument Description: FO PK NAIL
 Monument Witnesses: SEE Pg 304 "D"

Field Book: 9 Page: 13

A (NORTHWEST CORNER)

Date Located: _____
 By: _____
 Monument Description: _____
 Monument Witnesses: SEE PAGE 306 "C"
NE COR. 29-33-5

Field Book: _____ Page: _____

G (SOUTHWEST CORNER)

Date Located: _____
 By: _____
 Monument Description: _____
 Monument Witnesses: _____

Field Book: _____ Page: _____

B (NORTH QUARTER CORNER)

Date Located: 8/24/92 UPDATED 2/13/18 SR
 By: JA MOYER-EL HAINES
 Monument Description: BR SPIKE
 Monument Witnesses: NW CORNER OF A BR BAIL FCP SE 42.06
NW CORNER OF A BRIDGE BEAM FCP SSE 42.50
SET NAIL IN BOTTLE CAP IN SW FACE OF A PP NNW 36.12
NAIL IN SURVEYORS TAG POWER POLE WSW 51.72'
NAIL IN B. CAP IN POWER POLE NW 27.38'

Field Book: 2 Page: 60

H (SOUTH QUARTER CORNER)

Date Located: _____
 By: _____
 Monument Description: _____
 Monument Witnesses: _____

Field Book: _____ Page: _____

C (NORTHEAST CORNER)

Date Located: 3/21/18
 By: SRM
 Monument Description: FO BRONZE MONUMENT
 Monument Witnesses: SEE Pg 304 "A"

Field Book: 9 Page: 14

I (SOUTHEAST CORNER)

Date Located: 3/9/17
 By: SRM
 Monument Description: FO PK NAIL 2' DEEP
 Monument Witnesses: SEE Pg 304 "G"

Field Book: 6 Page: 33

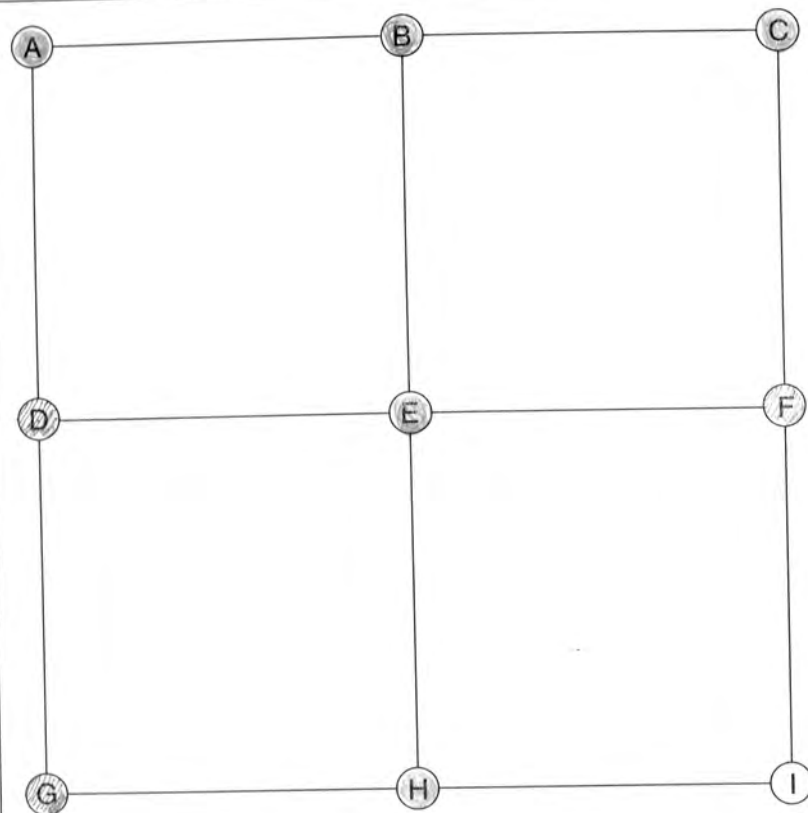
D (WEST QUARTER CORNER)

Date Located: 11/17/17
 By: SRM
 Monument Description: 1/2" REBAR w/CAP
 Monument Witnesses: SEE Pg 306 "F"

Field Book: 5 Page: 50

ADDITIONAL NOTES

Prairie
29-33-5



A (NORTHWEST CORNER)

Date Located: SEE PAGE 307 THIS BOOK "C"
 By: _____
 Monument Description: _____
 Monument Witnesses: _____

Field Book: _____ Page: _____

B (NORTH QUARTER CORNER)

Date Located: 7/16/92
 By: JR MOYER - EC HAINES
 Monument Description: PR NAIL
 Monument Witnesses: NE EDGE OF RR RAIL FCP SW 37.12'
NW EDGE OF A RR RAIL FCP SE 37.81'
SET NAIL IN BOTTLE CAP IN SE FACE OF A P.P. NW 32.02'
E RR RAIL FCP NNW 27.40'

Field Book: 2 Page: 11 UPDATED 1/17/17

C (NORTHEAST CORNER)

Date Located: 7/16/92
 By: JR MOYER - EC HAINES
 Monument Description: BROWNIE MARKER
 Monument Witnesses: CENTER OF A RR RAIL FCP ENE 65.95'
SET NAIL IN BOTTLE CAP IN NE FACE OF A P.P. WSW 68.75'
NAIL IN SURVEY TAG IN P POLE NNE 89.42'
NAIL IN SURVEY TAG IN P POLE ENE 72.65'
NAIL IN SURVEY TAG IN TEL POLE SW 68.50'

Field Book: 2 Page: 11 UPDATED 1/17/17

D (WEST QUARTER CORNER)

Date Located: 11/4/16
 By: DEM
 Monument Description: 5 RR SPIKE
 Monument Witnesses: E RR RAIL FCP W 20.15'
1/2" REBAR W/CAP NE 35.33'
NAIL IN WASHER IN POWER POLE SE 73.44'

Field Book: 5 Page: 31

E (CENTER OF SECTION)

Date Located: 5/16/89
 By: JR MOYER
 Monument Description: 3/4" SQ ROD 16" DEEP
 Monument Witnesses: RR RAIL FCP IN CONC. NNW 28.05'
RR RAIL FCP IN CONC. W 18.97'
" " SW 22.46'
" " NNE 36.83'
" " ENE 40.83'

Field Book: 1 Page: 1
 UPDATED 4 P. 47 SET HARRISON MON 8/4/16

F (EAST QUARTER CORNER)

Date Located: 1/17/17
 By: DEM
 Monument Description: 1/2" REBAR W/CAP
 Monument Witnesses: 1/2" REBAR W/CAP SW 31.32'
1/2" REBAR W/CAP SE 25.97'

Field Book: 5 Page: 50

G (SOUTHWEST CORNER)

Date Located: 1/17/17
 By: DEM
 Monument Description: FD MAG NAIL
 Monument Witnesses: E RR RAIL FCP E 20.15'
NAIL IN SURVEY TAG IN P POLE E 18.85'
1/2" REBAR W/CAP SE 47.25'
1/2" REBAR W/CAP SW 54.25'

Field Book: 5 Page: 51

H (SOUTH QUARTER CORNER)

Date Located: 7/16/92
 By: JR MOYER - EC HAINES
 Monument Description: RR SPIKE
 Monument Witnesses: CENTER OF A RR RAIL FCP W 15.50'
SET NAIL IN BOTTLE CAP IN NW FACE OF A P.P. NE 20.33'
" " " " " " SW " " " " SE 24.93'
E RR RAIL FCP TO E RR RAIL FCP 31.25'

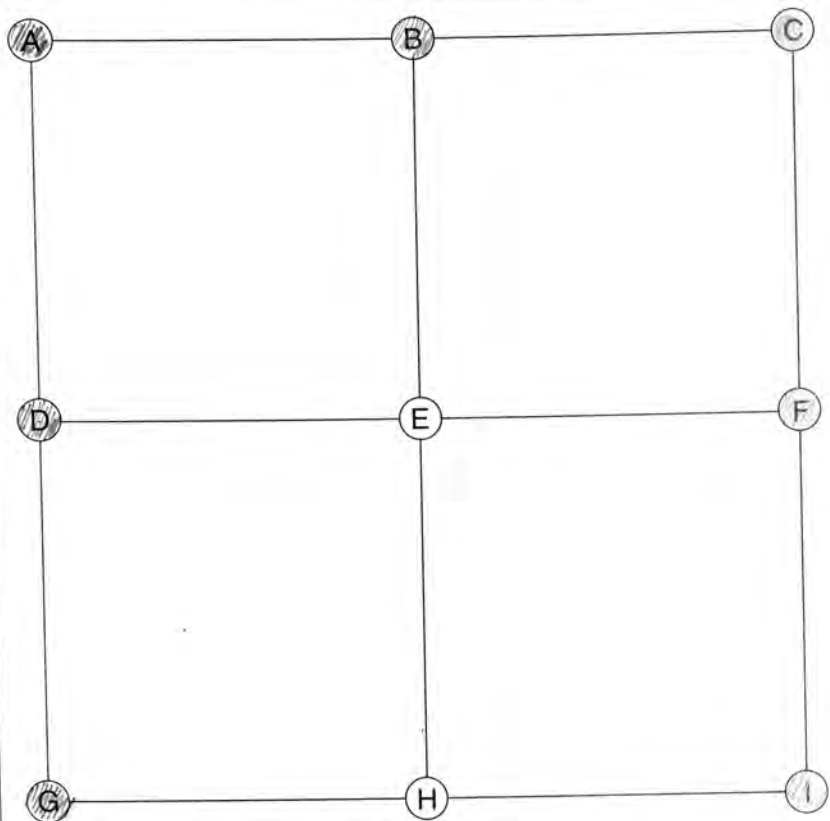
Field Book: 2 Page: 10 UPDATED 1/17/17 DEM

I (SOUTHEAST CORNER)

Date Located: _____
 By: _____
 Monument Description: _____
 Monument Witnesses: _____

Field Book: _____ Page: _____

ADDITIONAL NOTES



A (NORTHWEST CORNER)

Date Located: 7/12/16
 By: SEM
 Monument Description: RR SPIKE FLUSH
 Monument Witnesses: NAIL IN B CAP IN PP NW 46.70'
NAIL IN B CAP IN P POLE NNW 59.35'
ERR RAIL FCP NE 38.25'
NAIL IN B CAP IN P POLE SW 45.51'
USE TGS BM 2171 1946 SW 34.73'

Field Book: 4 Page: 28

B (NORTH QUARTER CORNER)

Date Located: 2/8/17
 By: SEM
 Monument Description: FO MAG NAIL
 Monument Witnesses: SEE Pg 296 "H"

Field Book: 5 Page: 71

C (NORTHEAST CORNER)

Date Located: 8/24/92
 By: JR MOYER-EC HAINES
 Monument Description: RR SPIKE
 Monument Witnesses: SET NAIL IN BOTTLE CAP IN NW FACE OF BENCH PP NNE 44.24'
NAIL IN SURVEY TAG IN P POLE NW 77.84'
1/2" REBAR W/CAP SW 44.30'

Field Book: 2 Page: 60 UPDATED 1/17/17 SEM

D (WEST QUARTER CORNER)

Date Located: 3/31/17
 By: SEM
 Monument Description: FO PK NAIL 3" DEEP
 Monument Witnesses: SEE Pg 43 "F"

Field Book: 6 Page: 51

E (CENTER OF SECTION)

Date Located: _____
 By: _____
 Monument Description: _____
 Monument Witnesses: _____

Field Book: _____ Page: _____

F (EAST QUARTER CORNER)

Date Located: 11/4/16
 By: SEM
 Monument Description: FO RR SPIKE
 Monument Witnesses: SEE Pg 306 "D"

Field Book: 5 Page: 31

G (SOUTHWEST CORNER)

Date Located: 3/29/17
 By: SEM
 Monument Description: FO MAG NAIL FLUSH
 Monument Witnesses: SEE Pg 43 "I"

Field Book: 6 Page: 49

H (SOUTH QUARTER CORNER)

Date Located: _____
 By: _____
 Monument Description: _____
 Monument Witnesses: _____

Field Book: _____ Page: _____

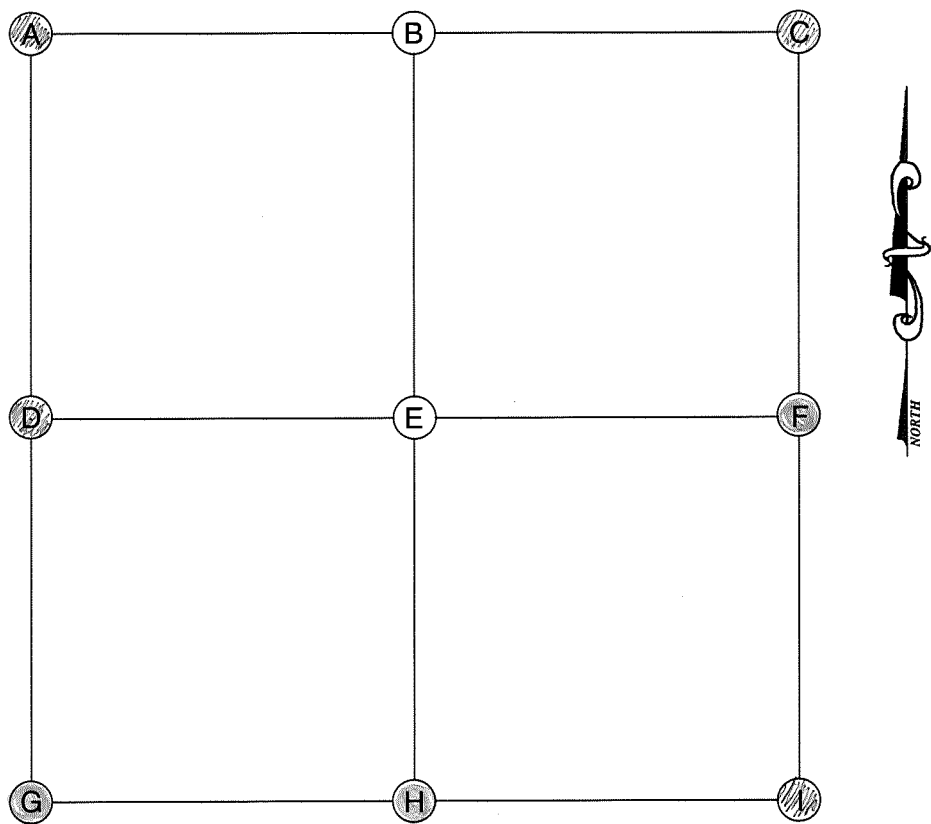
I (SOUTHEAST CORNER)

Date Located: 1/7/17
 By: SEM
 Monument Description: FO MAG NAIL
 Monument Witnesses: SEE Pg 306 "G"

Field Book: 5 Page: 51

ADDITIONAL NOTES

Prairie
31-33-5



A (NORTHWEST CORNER)

Date Located: 3/29/17
By: SRM
Monument Description: FO MAG NAIL FLUSH
Monument Witnesses: SEE Pg 43 "I"

Field Book: 6 Page: 49

B (NORTH QUARTER CORNER)

Date Located: _____
By: _____
Monument Description: _____
Monument Witnesses: _____

Field Book: _____ Page: _____

C (NORTHEAST CORNER)

Date Located: 1/17/17
By: SRM
Monument Description: FO MAG NAIL
Monument Witnesses: SEE Pg 306 "G"

Field Book: 5 Page: 51

D (WEST QUARTER CORNER)

Date Located: 6/12/19
By: SRM MWH
Monument Description: SET MAG NAIL W/ CO TAG
Monument Witnesses: 1/2" REBAR W/CAP NW 35.03'
1/2" REBAR W/CAP SW 25.35'
MAG NAIL "HUFFMAN" TAG N 804.02'

Field Book: 14 Page: 69

E (CENTER OF SECTION)

Date Located: _____
By: _____
Monument Description: _____
Monument Witnesses: _____

Field Book: _____ Page: _____

F (EAST QUARTER CORNER)

Date Located: 8/24/92
By: JR MOYER - ECHAINES
Monument Description: RR SPIKE
Monument Witnesses: _____
SET NAIL IN BOTTLE CAP IN NE FACE OF REM C PP SE 2746
" " " " " " SW " " " " " " SSE 35.05
1/2" REBAR W/CAP NE 37.27'

Field Book: 2 Page: 59 UPDATED 1/17/17 SRM

G (SOUTHWEST CORNER)

Date Located: 8/24/92
By: JR MOYER - ECHAINES
Monument Description: RR SPIKE
Monument Witnesses: SW CORNER OF RR RAIL ECP NE 30.08
NW CORNER OF 12" SQ CONC FCP SE 28.83
NE " " " " " " SW 28.90
SET NAIL IN BOTTLE CAP IN NE FACE OF PP NW 30.03

Field Book: 2 Page: 59

H (SOUTH QUARTER CORNER)

Date Located: 7/25/00
By: JR MOYER / TD LADSON
Monument Description: DD SPIKE WITH CUT "H"
Monument Witnesses: NAIL IN CAP. SW FACE DD NW 24.86'
N 1/4 CORNER 622.5 E 102.72'
N 1/4 CORNER NW FACE TEL POLE SSE 24.63'
12" CMP UNDER RD E 6'

Field Book: 1 Page: 19 UPDATED 4/17/17

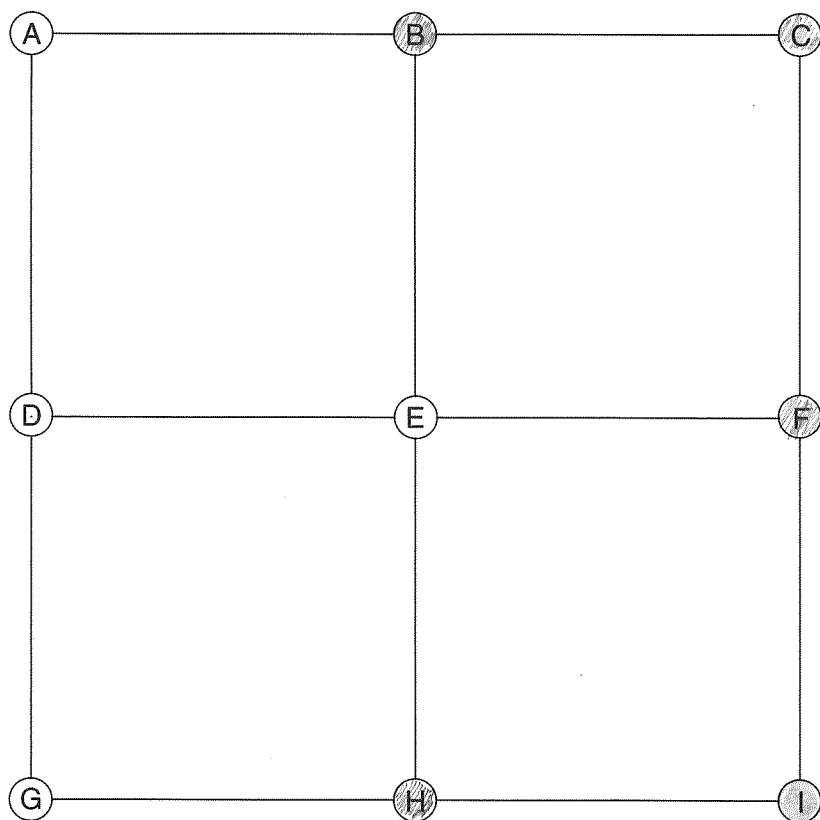
I (SOUTHEAST CORNER)

Date Located: 5/3/17
By: SRM
Monument Description: FO 8" SQ CONC POST W 3/4" ROD
Monument Witnesses: 1/2" REBAR W/CAP E 106.26'
GUARDRAIL N 15.5'
1/2" REBAR W/CAP N 1.5'

Field Book: 6 Page: 75

ADDITIONAL NOTES

Prairie
33-33-5



E (CENTER OF SECTION)

Date Located: _____
By: _____
Monument Description: _____
Monument Witnesses: _____

Field Book: _____ Page: _____

F (EAST QUARTER CORNER)

Date Located: 7/13/21
By: JRM MWH
Monument Description: BRONZE MARKER
Monument Witnesses: 1/2" DEEAE w/CAP WJW 39.91"

Field Book: 20 Page: 36

A (NORTHWEST CORNER)

Date Located: _____
By: _____
Monument Description: _____
Monument Witnesses: _____

Field Book: _____ Page: _____

G (SOUTHWEST CORNER)

Date Located: _____
By: _____
Monument Description: _____
Monument Witnesses: _____

Field Book: _____ Page: _____

B (NORTH QUARTER CORNER)

Date Located: 11/21/19
By: SEM MWJ
Monument Description: FO 5/8" REBAR
Monument Witnesses: _____

Field Book: 18 Page: 41

H (SOUTH QUARTER CORNER)

Date Located: 5/3/19
By: SEM MWH
Monument Description: FD STONE
Monument Witnesses: 12" SQ CONC FCP N 20.05'
RR RAIL FCP SE 43.15'
1/2" REBAR W/CAP SSE 22.52'
1/2" REBAR W/CAP SW 29.90'

Field Book: 13 Page: 64

C (NORTHEAST CORNER)

Date Located: 3/9/17
By: SRM
Monument Description: FO PK NAIL 2" DEEP
Monument Witnesses: SEE Pg 304 "G"

Field Book: 6 Page: 33

I (SOUTHEAST CORNER)

Date Located: 8/29/89
By: JR MOYER
Monument Description: 1/2" x 30" REBAR WITH CAP
Monument Witnesses: SECOR STEEL BRIDGE BEAM FCP NNW 58.60
SE CORNER STEEL BRIDGE BEAM FCP NW 53.25
SET NAIL IN BOTTLE CAP IN NW FACE OF REM POWER POLE NNE 54.38
" " " " " " SE " " " " " " ENE 75.80

Field Book: 1 Page: 12 UPDATED 6/19/18 SRM

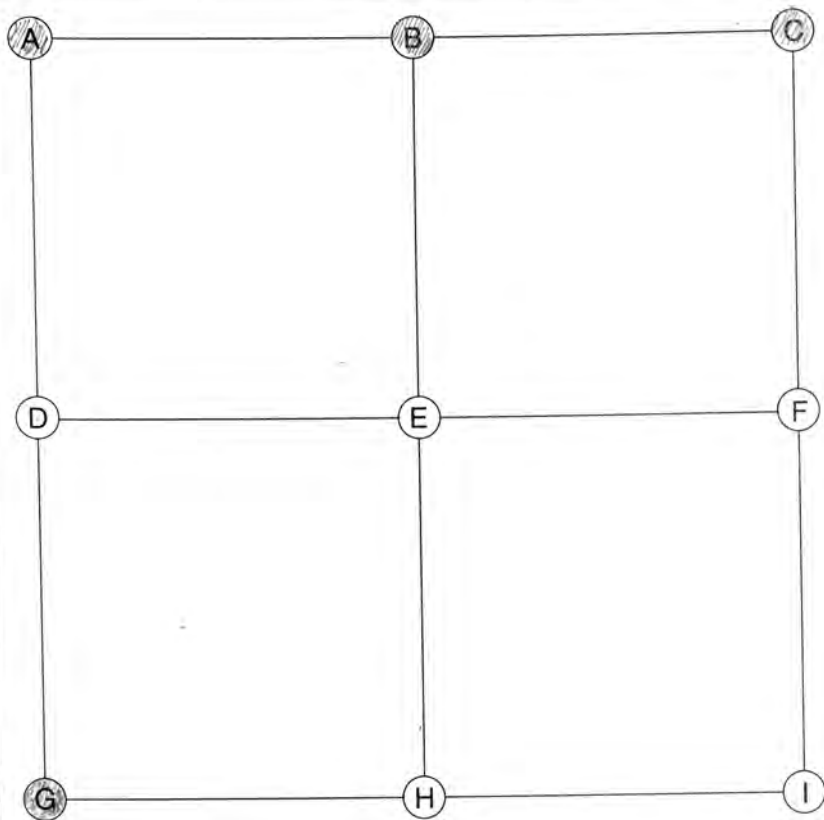
D (WEST QUARTER CORNER)

Date Located: _____
By: _____
Monument Description: _____
Monument Witnesses: _____

Field Book: _____ Page: _____

ADDITIONAL NOTES

[illegible]



E (CENTER OF SECTION)

Date Located: _____
 By: _____
 Monument Description: _____
 Monument Witnesses: _____

Field Book: _____ Page: _____

F (EAST QUARTER CORNER)

Date Located: _____
 By: _____
 Monument Description: _____
 Monument Witnesses: _____

Field Book: _____ Page: _____

A (NORTHWEST CORNER)

Date Located: 3/9/17
 By: SRM
 Monument Description: FO PK NAIL 3" DEEP
 Monument Witnesses: SEE Pg 304 "G"

Field Book: 6 Page: 33

G (SOUTHWEST CORNER)

Date Located: _____
 By: _____
 Monument Description: _____
 Monument Witnesses: SEE PAGE 310 "I"
SE COR 33-33-5

Field Book: _____ Page: _____

B (NORTH QUARTER CORNER)

Date Located: 3/9/17
 By: SRM
 Monument Description: FO RR SPIKE
 Monument Witnesses: SEE Pg 304 "H"

Field Book: 6 Page: 32

H (SOUTH QUARTER CORNER)

Date Located: _____
 By: _____
 Monument Description: _____
 Monument Witnesses: _____

Field Book: _____ Page: _____

C (NORTHEAST CORNER)

Date Located: 3/9/17
 By: SRM
 Monument Description: FO RR SPIKE
 Monument Witnesses: SEE Pg 304 "I"

Field Book: 6 Page: 31

I (SOUTHEAST CORNER)

Date Located: _____
 By: _____
 Monument Description: _____
 Monument Witnesses: _____

Field Book: _____ Page: _____

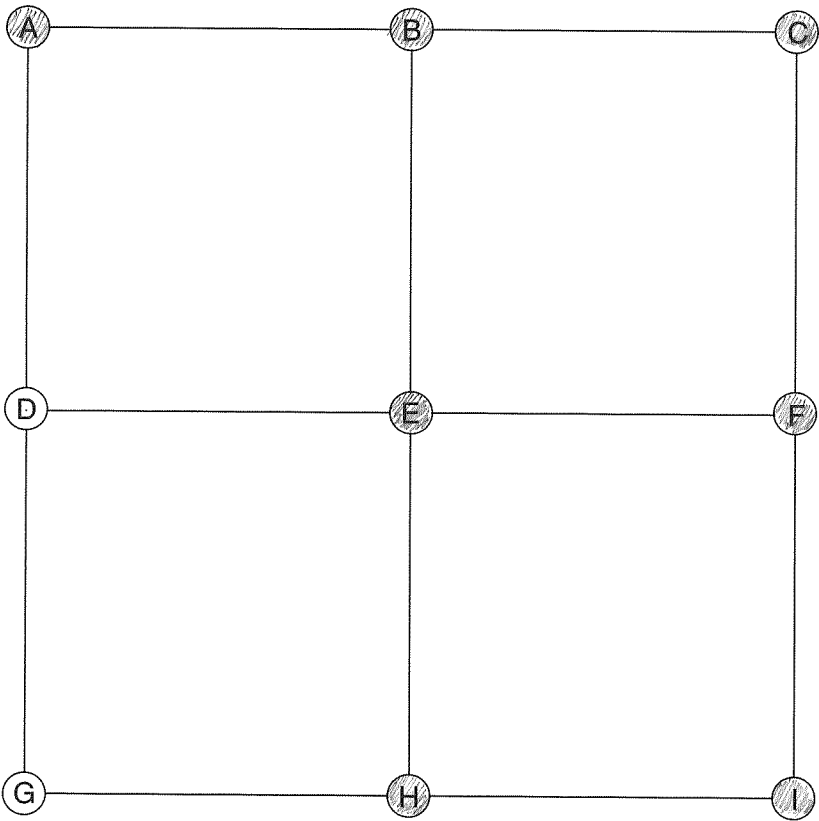
D (WEST QUARTER CORNER)

Date Located: _____
 By: _____
 Monument Description: _____
 Monument Witnesses: _____

Field Book: _____ Page: _____

ADDITIONAL NOTES

Prairie
35-33-5



E (CENTER OF SECTION)

Date Located: 10/26/17
By: SEM
Monument Description: FO "WALKER" MAG NAIL
Monument Witnesses: 1/2" REBAR W/CAP SW 35.20'
1/2" REBAR W/CAP ENE 49.43'
1/2" REBAR W/CAP SE 41.00'
Field Book: 8 Page: 23

F (EAST QUARTER CORNER)

Date Located: 11/5/20
By: SEM MWH
Monument Description: 1/2" REBAR W/CAP
Monument Witnesses: SEE Pg 313 "O"
Field Book: 19 Page: 64

A (NORTHWEST CORNER)

Date Located: 3/9/17
By: SEM
Monument Description: FO RR SPIKE
Monument Witnesses: SEE Pg 304 "I"
Field Book: 6 Page: 31

G (SOUTHWEST CORNER)

Date Located: _____
By: _____
Monument Description: _____
Monument Witnesses: _____
Field Book: _____ Page: _____

B (NORTH QUARTER CORNER)

Date Located: 5/13/16
By: SR MOYER
Monument Description: FO PK NAIL - REPLACED W RR SPIKE
Monument Witnesses: MAG NAIL IN P. POLE N 19.77'
SET 1/2" REBAR W/CAP SW 40.60'
SET 1/2" REBAR W/CAP SE 46.95'
Field Book: 3 Page: 53

H (SOUTH QUARTER CORNER)

Date Located: 5/13/16
By: SR MOYER
Monument Description: 1/2" I-PIPE WITH CAP
Monument Witnesses: SEE Pg 103 "B"
Field Book: 1 Page: 13

C (NORTHEAST CORNER)

Date Located: 7/25/17
By: SEM
Monument Description: FO MAG NAIL
Monument Witnesses: SEE Pg 313 "A"
Field Book: 7 Page: 38

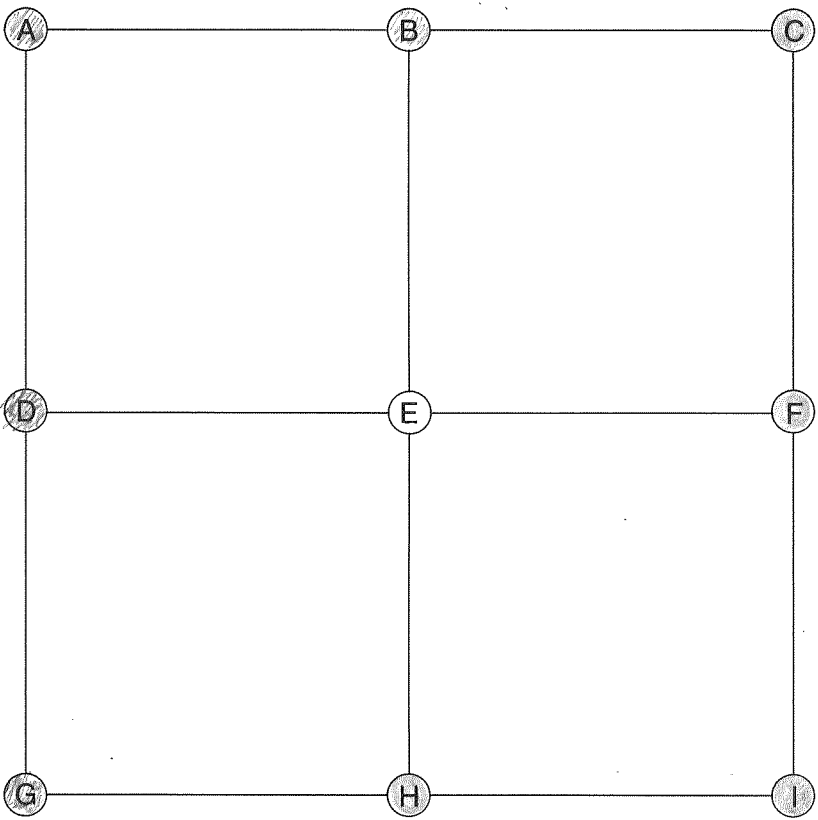
I (SOUTHEAST CORNER)

Date Located: 5/17/16
By: SR MOYER
Monument Description: FO MAG NAIL 2" DEEP
Monument Witnesses: MAG NAIL FLUSH E 19.92'
SET 1/2" REBAR W/CAP SW 25.50'
SET NAIL IN R. CAP IN P. POLE NW 32.83'
Field Book: 1 Page: 13

D (WEST QUARTER CORNER)

Date Located: _____
By: _____
Monument Description: _____
Monument Witnesses: _____
Field Book: _____ Page: _____

ADDITIONAL NOTES



E (CENTER OF SECTION)

Date Located: _____
By: _____
Monument Description: _____
Monument Witnesses: _____

Field Book: _____ Page: _____

F (EAST QUARTER CORNER)

Date Located: 8/14/92 UPDATED 6/29/17
By: JR MOYER - EC HAINES
Monument Description: PK NAIL
Monument Witnesses: CENTER OF MERIDIAN OF US 30 N 89.1
CENTER OF CONC. MON. W/ BRONZE DISK ESE 107.97
SET NAIL IN BOTTLE CAP IN NE FACE OF M.B.P. - SSW 110.84'
"M.B.P." - METER BOX POLE

Field Book: 0 Page: 47 UPDATED
STATE PLANE COORDINATES PHASE II 2/2018

A (NORTHWEST CORNER)

Date Located: 7/25/17
By: SRM
Monument Description: FO MAG NAIL
Monument Witnesses: NAIL IN B. CAP P POLE NW 48.50'
NAIL IN B. CAP IN P POLE NNE 61.97'
NAIL IN B. CAP IN P POLE ENE 47.02'
NAIL IN B. CAP IN P POLE SE 21.85'

Field Book: 7 Page: 38

G (SOUTHWEST CORNER)

Date Located: 5/17/16
By: SR MOYER
Monument Description: FO MAG NAIL 2" DEEP
Monument Witnesses: SEE P 312 "I"

Field Book: 1 Page: 13

B (NORTH QUARTER CORNER)

Date Located: 7/25/17
By: SRM
Monument Description: FO 5/8 REBAR 6" DEEP
Monument Witnesses: NAIL IN B. CAP P POLE NE 22.57'
4 REBAR FCP S 23.37'

Field Book: 7 Page: 39

H (SOUTH QUARTER CORNER)

Date Located: 6/3/92
By: JR MOYER - EC HAINES
Monument Description: BRONZE MARKER
Monument Witnesses: SET 3"x3" CONC. MONUMENT NW 31.65'
SET NAIL IN BOTTLE CAP IN SE FACE OF POWER POLE NE 34.55'
FO 1 1/2" PIPE N 20.0' 41.78'

Field Book: 1 Page: 47 UPDATED 7/6/17

C (NORTHEAST CORNER)

Date Located: _____
By: _____
Monument Description: _____
Monument Witnesses: SEE PAGE 272 "A"
NW COR. 31-33-6

Field Book: _____ Page: _____
STATE PLANE COORDINATES PHASE II 2/2018

I (SOUTHEAST CORNER)

Date Located: _____
By: _____
Monument Description: _____
Monument Witnesses: SEE PAGE 517 "C"
NE COR 1-32-5

Field Book: _____ Page: _____
STATE PLANE COORDINATES PHASE I 12/2017

ADDITIONAL NOTES

D (WEST QUARTER CORNER)

Date Located: 11/5/20
By: SRM - MWL
Monument Description: 1/2" REBAR W/ CAP
Monument Witnesses: _____

Field Book: 19 Page: 64