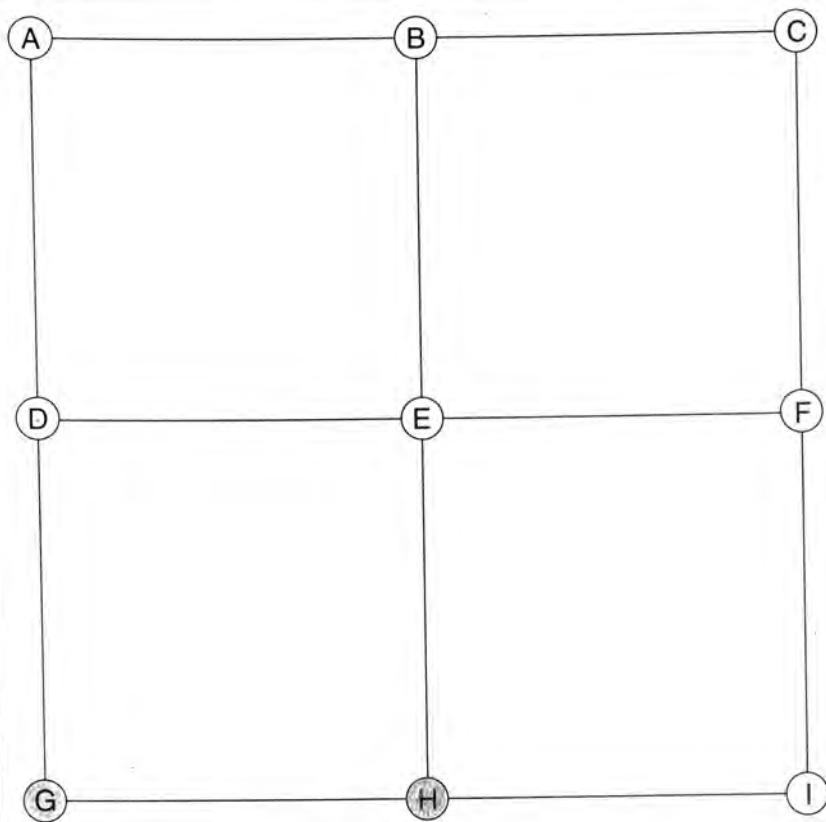




ADDITIONAL NOTES



Date Located: _____
By: _____
Monument Description: _____
Monument Witnesses: _____

Field Book: _____ Page: _____

Date Located: _____
By: _____
Monument Description: _____
Monument Witnesses: _____

Field Book: _____ Page: _____

Date Located: _____
By: _____
Monument Description: _____
Monument Witnesses: _____

Field Book: _____ Page: _____

Date Located: _____
By: _____
Monument Description: _____
Monument Witnesses: _____

Field Book: _____ Page: _____

Date Located: _____
By: _____
Monument Description: _____
Monument Witnesses: _____

Field Book: _____ Page: _____

Date Located: _____
By: _____
Monument Description: _____
Monument Witnesses: _____

Field Book: _____ Page: _____

Date Located: 6/22/92
By: _____
Monument Description: 1/2" REBAR WITH CAP
Monument Witnesses: SEE PAGE 288 "A"
NW COR 11-35-5

Field Book: 1 Page: 60 UPDATED 10/6/15

Date Located: 6/22/92
By: _____
Monument Description: FO SPIRE
Monument Witnesses: SEE PAGE 238 "B"
N/4 Post 11-33-5

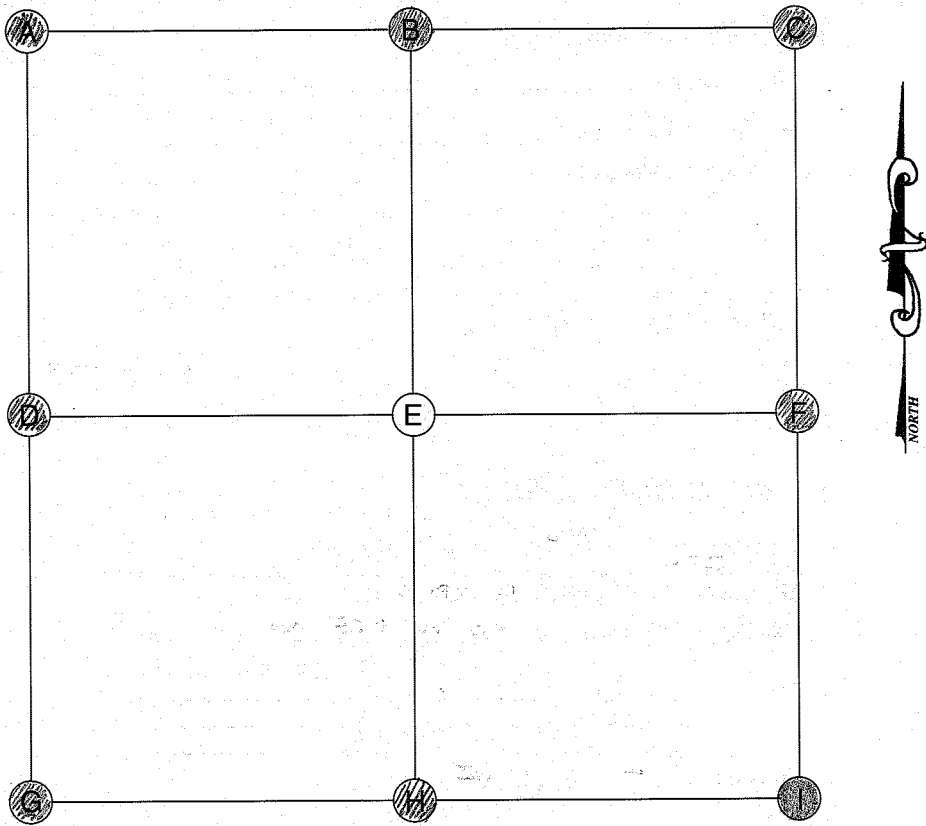
Field Book: 1 Page: 60 UPDATED 10/6/15

Date Located: _____
By: _____
Monument Description: _____
Monument Witnesses: _____

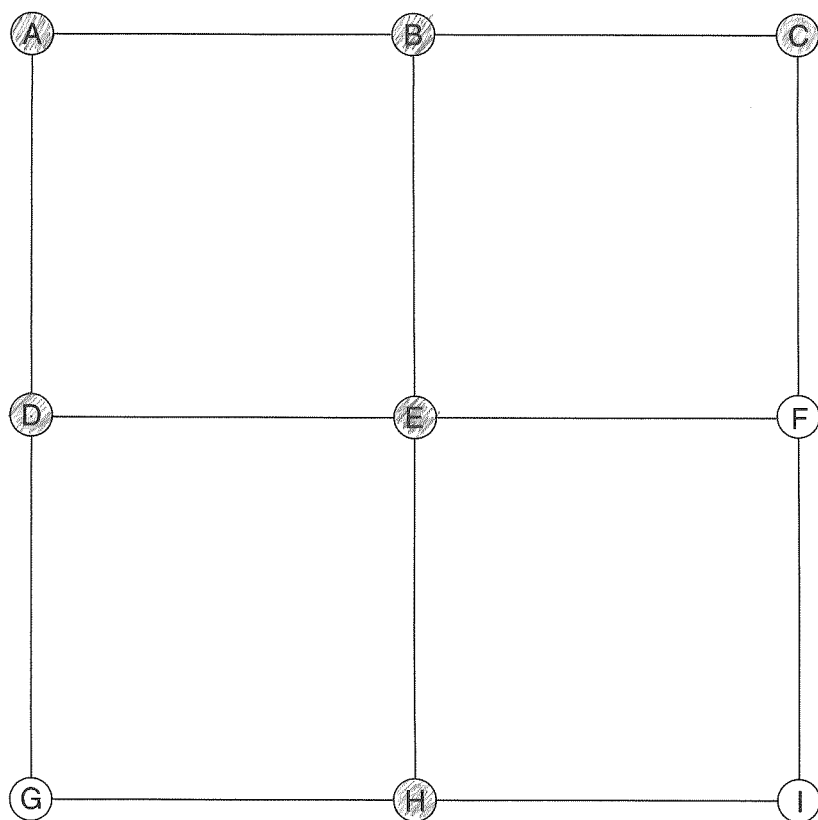
Field Book: _____ Page: _____

ADDITIONAL NOTES

This image shows a single sheet of white paper with horizontal blue or grey ruling lines. The lines are evenly spaced and run across the width of the page. There are approximately 20 lines visible. The paper appears to be a standard notebook page.



ADDITIONAL NOTES



Date Located: 9/14/20
By: REMOVED
Monument Description: FO DRRAIL FCP
Monument Witnesses: _____

Field Book: 19 Page: 41

Date Located: _____
By: _____
Monument Description: _____
Monument Witnesses: _____

Field Book: _____ Page: _____

Date Located: 6/12/18
By: SRM
Monument Description: MAG NAIL W/CO TAG
Monument Witnesses: 1/2" REBAR W/CO CAP NW 38.28
1/2" REBAR W/CAP NE 29.34'
NAIL W B. CAP NIPSCO POLE ENE 49.99'

Field Book: 9 Page: 78

Date Located: _____
By: _____
Monument Description: _____
Monument Witnesses: _____

Field Book: _____ Page: _____

Date Located: 6/12/18
By: SEM
Monument Description: 1/2" REBAR NO CAP
Monument Witnesses: NAIL IN B. CAP POWER POLE N 28.1'
FACE 15" DIA CONC FCP S 20.37'
NAIL IN B. CAP POWER POLE SW 27.90'

Field Book: 10 Page: 1

Date Located: 7/15/20
By: SEM MMH
Monument Description: FD 1" FINCHED TOP PIPE
Monument Witnesses: NAIL IN B. CAP TEL POLE SW 18.6'
NAIL IN B. CAP POWER POLE NE 78.66'
NAIL IN B. CAP POWER POLE SSE 64.85'

Field Book: 19 Page: 1

Date Located: 7/15/20
By: SEN MNH
Monument Description: FB CAPPED IRON
Monument Witnesses: SEE Pg 281 "A"

Field Book: 19 Page: 2

Date Located: _____
By: _____
Monument Description: _____
Monument Witnesses: _____

Field Book: _____ Page: _____

Date Located: 9/14/20
By: REMOVED
Monument Description: FD RR RAIL FCP
Monument Witnesses: _____

Field Book: 19 Page: 40

ADDITIONAL NOTES

This image shows a single sheet of white paper with horizontal blue or grey ruling lines. The lines are evenly spaced and run across the width of the page. There are approximately 20 lines visible. The paper has a slightly textured appearance and is set against a dark background.



Field Book: _____ Page: _____

Field Book: 7 Page: 6

Field Book: _____ Page: _____

Field Book: _____ Page: _____

Field Book: 7 Page: 7

Field Book: _____ Page: _____

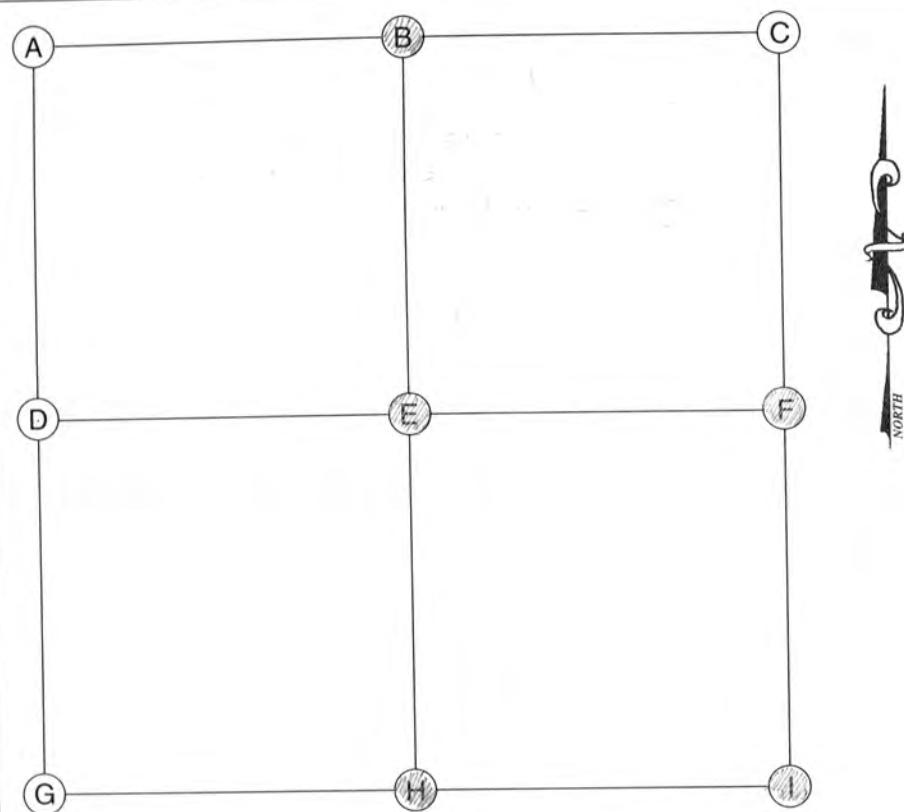
Field Book: _____ Page: _____

Field Book: 7 Page: 19

Field Book: _____ Page: _____

ADDITIONAL NOTES

Prairie
7-33-5



A (NORTHWEST CORNER)

Date Located: _____
By: _____
Monument Description: _____
Monument Witnesses: _____

Field Book: _____ Page: _____

B (NORTH QUARTER CORNER)

Date Located: 6/12/17
By: SEM
Monument Description: FO MAG NAIL IN 3/4" IRON PIPE FLUSH
Monument Witnesses: NAIL IN B. CAP IN POWER POLE NW 72.85'
1/2" REBAR W/CAP W 20.15'
1/2" REBAR W/CAP SW 53.62'

Field Book: 7 Page: 19

C (NORTHEAST CORNER)

Date Located: _____
By: _____
Monument Description: _____
Monument Witnesses: _____

Field Book: _____ Page: _____

D (WEST QUARTER CORNER)

Date Located: _____
By: _____
Monument Description: _____
Monument Witnesses: _____

Field Book: _____ Page: _____

E (CENTER OF SECTION)

Date Located: 6/12/17
By: SEM
Monument Description: FO MAG NAIL IN 3/4" IRON PIPE
Monument Witnesses: 1/2" REBAR W/CAP W 20.2'
NAIL IN B. CAP IN POWER POLE W 16.82'
1/2" REBAR W/CAP SE 63.78'
1/2" REBAR W/CAP SW 33.27'

Field Book: 7 Page: 20

F (EAST QUARTER CORNER)

Date Located: 6/12/17
By: SEM
Monument Description: FO 3/2" REBAR 4" DEEP
Monument Witnesses: "WALKER" CAPPED REBAR NW 36.04'
NAIL IN B. CAP IN POWER POLE NE 15.53'
NAIL IN B. CAP IN POWER POLE SE 84.53'

Field Book: 7 Page: 21

G (SOUTHWEST CORNER)

Date Located: _____
By: _____
Monument Description: _____
Monument Witnesses: _____

Field Book: _____ Page: _____

H (SOUTH QUARTER CORNER)

Date Located: 5/3/17
By: SEM
Monument Description: SET 1/2" X 16" REBAR W/CAP
Monument Witnesses: SEE Pg 295 "B"

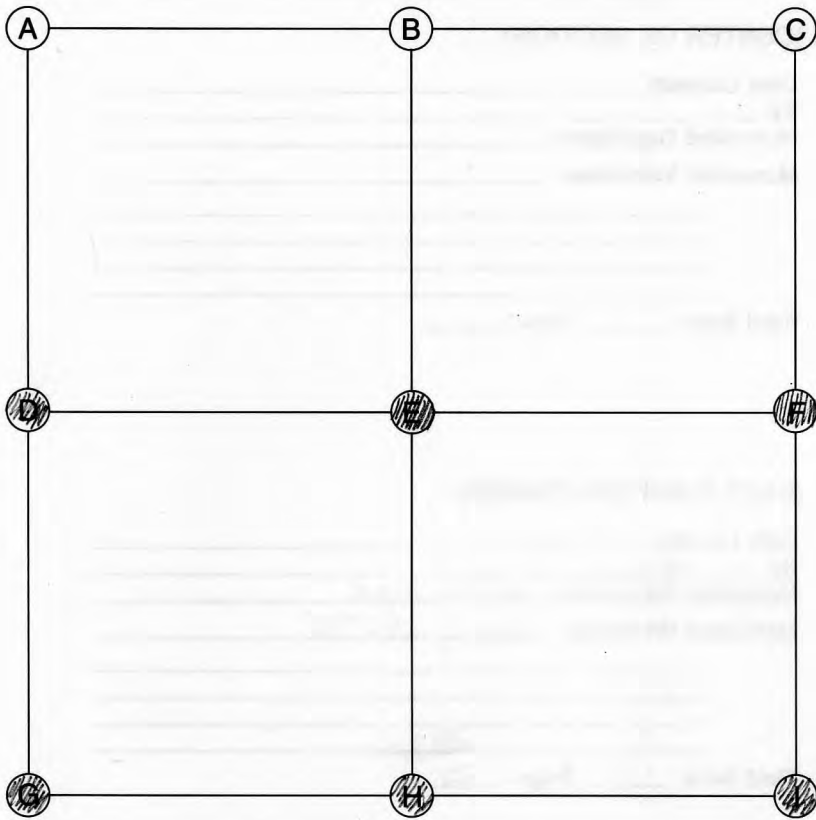
Field Book: 6 Page: 73

I (SOUTHEAST CORNER)

Date Located: 5/3/17
By: SEM
Monument Description: FO ER SPIKE
Monument Witnesses: SEE Pg 295 "C"

Field Book: 6 Page: 74

ADDITIONAL NOTES



E (CENTER OF SECTION)

Date Located: 10/20/16
By: DEM
Monument Description: 1/2" REBAR w/CAP
Monument Witnesses: RR RAIL FCP 20.00' S
1/2" REBAR w/CAP 42.83' NW
1/2" REBAR w/CAP 28.00' SW
PK NAIL IN POWER POLE 27.10' SE

Field Book: 3 Page: 34

F (EAST QUARTER CORNER)

Date Located: 10/20/15
By: DEM
Monument Description: 1/2" REBAR w/CAP
Monument Witnesses: FACE OF RR RAIL FCP 18.56' N
1/2" REBAR w/CAP 25.65' NE
1/2" REBAR w/CAP 25.70' SE

Field Book: 3 Page: 35

A (NORTHWEST CORNER)

Date Located: _____
By: _____
Monument Description: _____
Monument Witnesses: _____

Field Book: _____ Page: _____

G (SOUTHWEST CORNER)

Date Located: 5/3/17
By: DEM
Monument Description: FO RR SPIKE FLUSH
Monument Witnesses: SEE Pg 295 "C"

Field Book: 6 Page: 74

B (NORTH QUARTER CORNER)

Date Located: _____
By: _____
Monument Description: _____
Monument Witnesses: _____

Field Book: _____ Page: _____

H (SOUTH QUARTER CORNER)

Date Located: 4/11/18
By: DEM
Monument Description: FO PK NAIL FLUSH
Monument Witnesses: FO NAIL IN B. CAP IN P. POLE NNW 18.31'
1/2" REBAR w/CAP SE 51.00'
3/4" IRON PIPE S 20.03'
FO NAIL IN B. CAP IN POWER POLE SSW 19.74'

Field Book: 9 Page: 28

C (NORTHEAST CORNER)

Date Located: _____
By: _____
Monument Description: _____
Monument Witnesses: _____

Field Book: _____ Page: _____

I (SOUTHEAST CORNER)

Date Located: 4/11/18
By: DEM
Monument Description: FO PK NAIL FLUSH
Monument Witnesses: SEE Pg 286 "G"

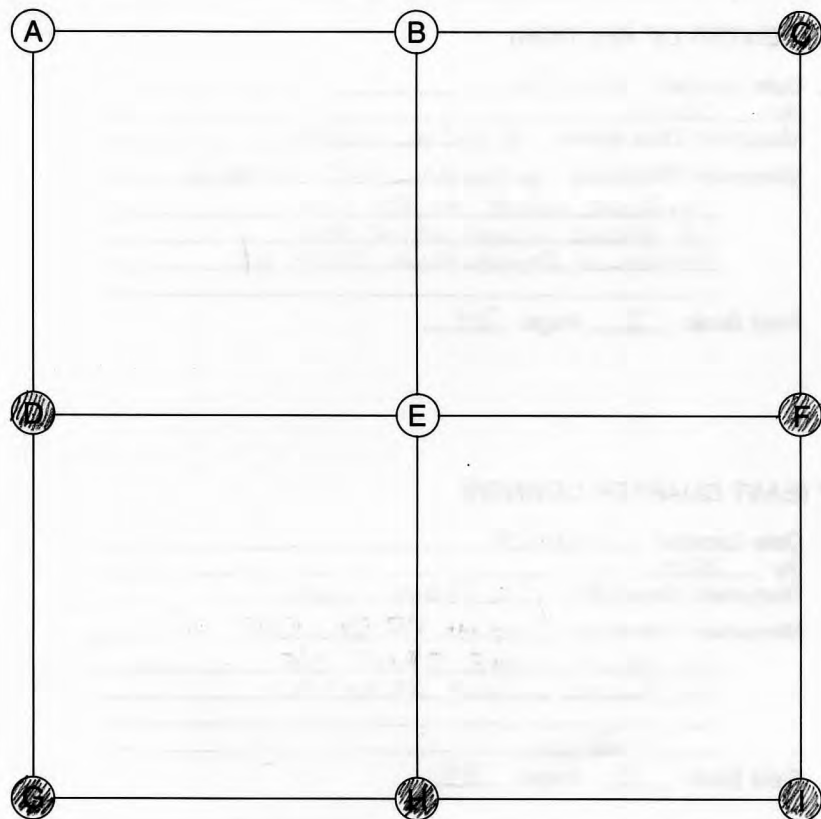
Field Book: 9 Page: 29

D (WEST QUARTER CORNER)

Date Located: 6/12/17
By: DEM
Monument Description: FO 3/8" REBAR 4" DEEP
Monument Witnesses: SEE Pg 284 "F"

Field Book: 7 Page: 21

ADDITIONAL NOTES



A (NORTHWEST CORNER)

Date Located: _____
 By: _____
 Monument Description: _____
 Monument Witnesses: _____

Field Book: _____ Page: _____

B (NORTH QUARTER CORNER)

Date Located: _____
 By: _____
 Monument Description: _____
 Monument Witnesses: _____

Field Book: _____ Page: _____

C (NORTHEAST CORNER)

Date Located: 11/1/16
 By: DEM
 Monument Description: FD 1/2" REBAR
 Monument Witnesses: SEE Pg 287 "A"

Field Book: 5 Page: 27

D (WEST QUARTER CORNER)

Date Located: 10/20/15
 By: DEM
 Monument Description: 1/2" REBAR w/CAP
 Monument Witnesses: SEE Pg 285 "F"

Field Book: 3 Page: 35

E (CENTER OF SECTION)

Date Located: _____
 By: _____
 Monument Description: _____
 Monument Witnesses: _____

Field Book: _____ Page: _____

F (EAST QUARTER CORNER)

Date Located: 11/1/16
 By: DEM
 Monument Description: FD RR SPIKE
 Monument Witnesses: SEE Pg 287 "D"

Field Book: 5 Page: 28

G (SOUTHWEST CORNER)

Date Located: 4/11/18
 By: DEM
 Monument Description: FD PK NAIL FLUSH
 Monument Witnesses: NAIL IN B. CAP IN POWER POLE N 21.14'
1/2" REBAR w/CAP SE 46.24'
NAIL IN B. CAP IN POWER POLE SSW 83.27'
5/8" REBAR IN PAVEMENT S 1.38'

Field Book: 9 Page: 29

H (SOUTH QUARTER CORNER)

Date Located: 4/11/18
 By: DEM
 Monument Description: FD RR SPIKE
 Monument Witnesses: FD NAIL IN B. CAP IN POWER POLE N 16.61'
1/2" REBAR w/CAP NE 49.87'
4 RR RAIL FCP S 21.8'
1/2" REBAR w/CAP SW 23.68'

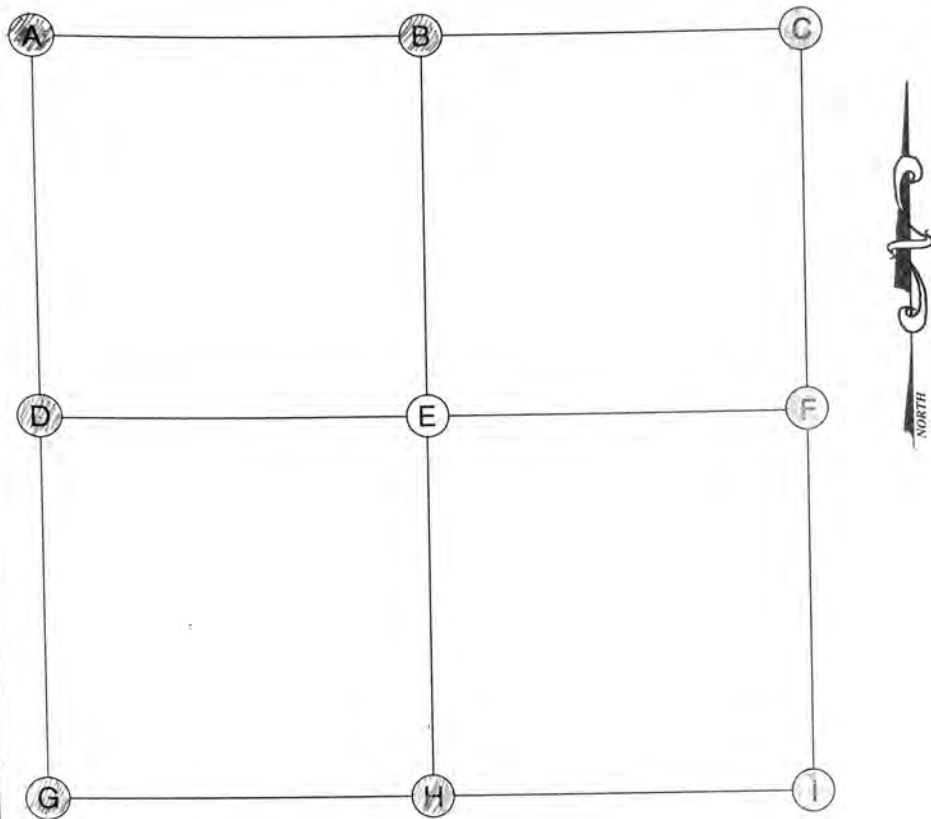
Field Book: 9 Page: 30

I (SOUTHEAST CORNER)

Date Located: 11/1/16
 By: DEM
 Monument Description: FD 1/2" REBAR 6" DEEP
 Monument Witnesses: SEE Pg 287 "G"

Field Book: 5 Page: 29

ADDITIONAL NOTES



A (NORTHWEST CORNER)

Date Located: 11/1/16
 By: SRM
 Monument Description: FD 1/2" REBAR 4" DEEP
 Monument Witnesses: 1/2" REBAR W/CAP NE 28.10'
NAIL IN WASHER IN POWER POLE ENE 28.10'
2" DIA STEEL PIPE SE 32.55'
3/8" CAPPED REBAR SE 28.40'
NAIL IN WASHER IN POWER POLE SW 28.80'

Field Book: 5 Page: 27

B (NORTH QUARTER CORNER)

Date Located: 11/1/16
 By: SRM
 Monument Description: FD 1/2" STEEL AXLE W/ 1" SQ HEAD
 Monument Witnesses: RR RAIL FCP NW 27.75'
1/2" REBAR W/CAP NE 22.24'
1/2" REBAR W/CAP SE 27.88'
RR RAIL FCP SW 24.76'

Field Book: 5 Page: 26

C (NORTHEAST CORNER)

Date Located: 6/22/92
 By: SRM
 Monument Description: 1/2" REBAR WITH CAP
 Monument Witnesses: SEE PAGE 288 "A"
NW COR. 11-33-5

Field Book: 1 Page: 60 UPDATED 10/6/15

D (WEST QUARTER CORNER)

Date Located: 11/1/16
 By: SRM
 Monument Description: FD RR SPIKE 6" DEEP
 Monument Witnesses: RR RAIL FCP WNW 19.40'
NAIL IN B. CAP IN FCP E 20.60'
1/2" IRON PIPE E 19.95'
1/2" REBAR W/CAP SW 20.75'

Field Book: 5 Page: 28

E (CENTER OF SECTION)

Date Located: _____
 By: _____
 Monument Description: _____
 Monument Witnesses: _____

Field Book: _____ Page: _____

F (EAST QUARTER CORNER)

Date Located: _____
 By: _____
 Monument Description: _____
 Monument Witnesses: SEE PAGE 288 "D"
W/4 POST 11-33-5

Field Book: _____ Page: _____

G (SOUTHWEST CORNER)

Date Located: 11/1/16
 By: SRM
 Monument Description: FD 1/2" REBAR 6" DEEP
 Monument Witnesses: NAIL IN B. CAP IN F. POLE NW 46.13'
NAIL IN B. CAP IN NIPSCO POLE 674/034 NE 31.19'
1/2" REBAR W/CAP SE 39.73'

Field Book: 5 Page: 29

H (SOUTH QUARTER CORNER)

Date Located: 11/1/16
 By: SRM
 Monument Description: FD MAG NAIL FUSE
 Monument Witnesses: 1/2" REBAR W/CAP NE 44.25'
NAIL IN WASHER IN POWER POLE NE 75.25'
1/2" REBAR W/CAP SE 44.01'
RR RAIL FCP S 22.61'

Field Book: 5 Page: 30

I (SOUTHEAST CORNER)

Date Located: _____
 By: _____
 Monument Description: _____
 Monument Witnesses: SEE PAGE 288 "G"
SW COR 11-33-5

Field Book: _____ Page: _____

ADDITIONAL NOTES



Date Located: _____
By: _____
Monument Description: _____
Monument Witnesses: _____

Field Book: _____ Page: _____

F (EAST QUARTER CORNER)

Date Located: 5/17/89 UPDATED 5/8/9
By: SE MOVER
Monument Description: RR SPIKE 4" DEEP
Monument Witnesses: _____
NAIL IN BOTTLE CAP, SE FACE OF PP SSW 71.45'
1/2" RE-BAR 6" DEEP W 20.00'

Field Book: 1 Page: 1 FB 13 R 76

A (NORTHWEST CORNER)

Date Located: 6/22/92
By: JR MOYER - EL HAINES
Monument Description: BEGAN W/ CAP
Monument Witnesses: SETAHLIN IN BOTTLE CAP IN SW FACE OF P.P. NW 35.37
SETHLIN IN BOTTLE CAP IN NE FACE OF BEML P.P. NW 75.62
" " " " " " " " " " " "CENTRAL TELEPHONE P. ESE 54.09
" " " " " " " " " " " "A POWERS POLE SSW 70.59

Field Book: 1 Page: 60 UPDATED 10/6/15 JRM/MSR

G (SOUTHWEST CORNER)

Date Located: 6/22/92
By: JR MOYER - EC HAINES
Monument Description: BRONZE MARKER
Monument Witnesses: _____
SET NAIL IN BOTTLE CAP IN NE FACE OF A RMNC POLE SSE 41.89
SET NAIL IN BOTTLE CAP IN NE FACE OF A RMNC POLE SSE 46.98

Field Book: 1 Page: 61 UPDATED 3/30/16 JEM

B (NORTH QUARTER CORNER)

Date Located: 6/22/92
By: JA MOYER - ECH41053
Monument Description: AA SPIKE
Monument Witnesses: SOUTH FACE OF A ABRAIL CLP N 22.03
SETMAIL IN BATTLE CAMP IN SOUTH FACE OF A I.P.P NW 31.17

Field Book: 1 Page: 60 UPDATED 10/6/15 REMOVED

H (SOUTH QUARTER CORNER)

Date Located: 5/8/19
By: SEM MWH
Monument Description: MAG NAIL w/ CO TAG
Monument Witnesses: NAIL IN B. CAP POWER POLE WNW 36.32'
1/2" REBAR w/ CAP NE 24.55'
1/2" REBAR w/ CAP SW 28.14'

Field Book: 13 Page: 73

C (NORTHEAST CORNER)

Date Located: 5/2/19
By: SRM MWH
Monument Description: BRONZE MONUMENT
Monument Witnesses: SEE Pg 278 "G"

Field Book: 13 Page: 77

1 (SOUTHEAST CORNER)

Date Located: 5/8/19
By: SEM MWH
Monument Description: BRONZE MONUMENT
Monument Witnesses: SEE P 289 "G"

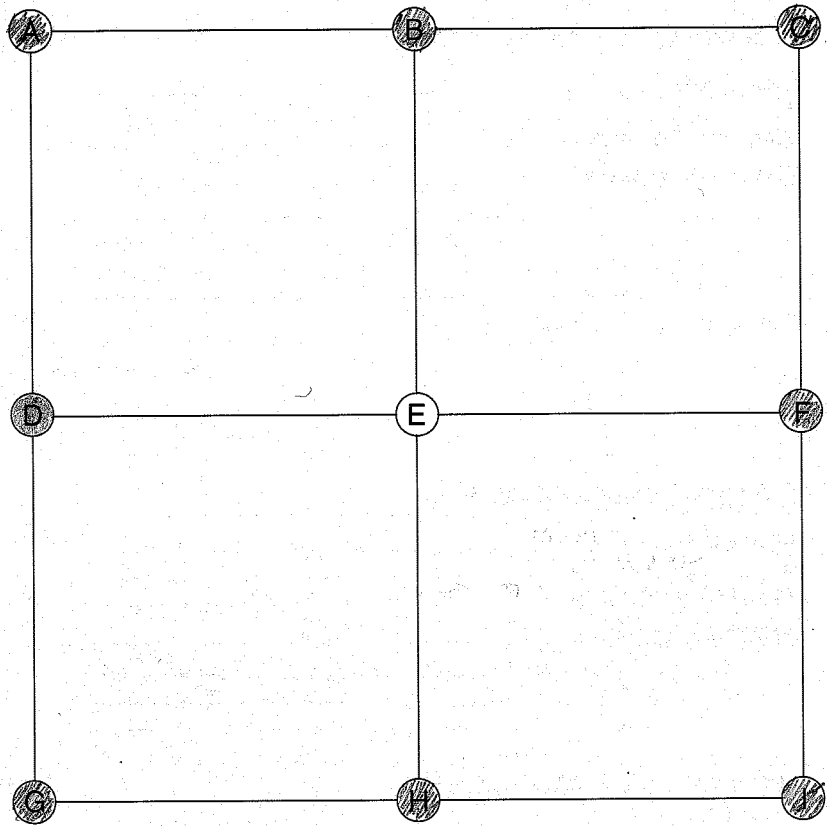
Field Book: 13 Page: 74

D (WEST QUARTER CORNER)

Date Located: 6/22/99
By: JR MOYER - EC HAINES
Monument Description: BEAR
Monument Witnessers: SET 1/2"x30" BEAR WILCO NE 36.00
SET 1/2"x30" BEAR WILCO SE 23.10
CENTER OF RAIL FCP W 20.02

Field Book: 1 Page: 61 UPDATED 3/30/16 SRM

ADDITIONAL NOTES



A (NORTHWEST CORNER)

Date Located: 5/8/19
By: SEM MWH
Monument Description: BRONZE MONUMENT
Monument Witnesses: SEE Pg 278 "G"

Field Book: 13 Page: 77

B (NORTH QUARTER CORNER)

Date Located: 5/8/19
By: SEM MWH
Monument Description: FD RR SPIKE
Monument Witnesses: SEE Pg 278 "H"

Field Book: 13 Page: 78

C (NORTHEAST CORNER)

Date Located: 4/17/19
By: SEM MWH
Monument Description: PK NAIL
Monument Witnesses: SEE Pg 248 "A"

Field Book: 13 Page: 29

D (WEST QUARTER CORNER)

Date Located: 5/8/19
By: SEM MWH
Monument Description: 1/2" REBAR w/CAP
Monument Witnesses: 1/2" REBAR w/CAP NW 26.74'
1/2" REBAR w/CAP SW 26.04'
NAIL IN B. CAP NIPSCO POLE SSW 63.70'

Field Book: 13 Page: 76

E (CENTER OF SECTION)

Date Located: _____
By: _____
Monument Description: _____
Monument Witnesses: _____

Field Book: _____ Page: _____

F (EAST QUARTER CORNER)

Date Located: 4/17/19
By: SEM MWH
Monument Description: RR SPIKE
Monument Witnesses: SEE Pg 248 "D"

Field Book: 13 Page: 30

G (SOUTHWEST CORNER)

Date Located: 5/8/19
By: SEM MWH
Monument Description: BRONZE MARKER
Monument Witnesses: NAIL IN B. CAP NIPSCO POLE NW 32.59'
1/2" REBAR w/CAP SE 42.49'
1/2" REBAR w/CAP SW 41.43'

Field Book: 13 Page: 74

H (SOUTH QUARTER CORNER)

Date Located: 5/8/19
By: SEM MWH
Monument Description: MAG NAIL w/CO TAG
Monument Witnesses: 1/2" REBAR w/CAP NW 31.48'
NAIL IN B. CAP POWER POLE NE 64.82'
1/2" REBAR w/CAP SW 29.85'

Field Book: 13 Page: 75

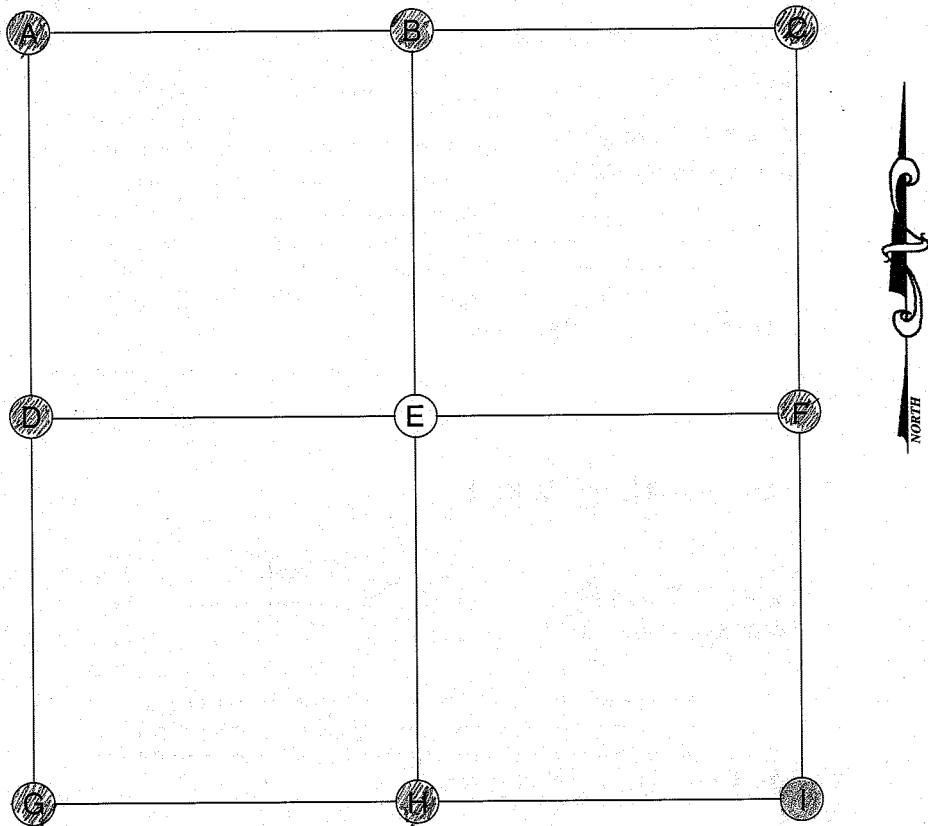
I (SOUTHEAST CORNER)

Date Located: 4/17/19
By: SEM MWH
Monument Description: PK NAIL
Monument Witnesses: SEE Pg 259 "A"

Field Book: 13 Page: 31

ADDITIONAL NOTES

Prairie
13-33-5



A (NORTHWEST CORNER)

Date Located: 5/8/19
By: SEM MWH
Monument Description: BRONZE MONUMENT
Monument Witnesses: SEE Pg 289 "G"

Field Book: 13 Page: 74

B (NORTH QUARTER CORNER)

Date Located: 5/8/19
By: SEM MWH
Monument Description: MAG NAIL w/ CO TAG
Monument Witnesses: SEE Pg 289 "H"

Field Book: 13 Page: 75

C (NORTHEAST CORNER)

Date Located: 4/17/19
By: SEM MWH
Monument Description: PK NAIL
Monument Witnesses: SEE Pg 259 "A"

Field Book: 13 Page: 31

D (WEST QUARTER CORNER)

Date Located: 5/8/19
By: SEM MWH
Monument Description: MAG NAIL w/ CO TAG
Monument Witnesses: SEE Pg 291 "F"

Field Book: 13 Page: 70

E (CENTER OF SECTION)

Date Located: _____
By: _____
Monument Description: _____
Monument Witnesses: _____

Field Book: _____ Page: _____

F (EAST QUARTER CORNER)

Date Located: 5/8/19
By: SEM MWH
Monument Description: RE SPIKE
Monument Witnesses: SEE Pg 291 "D"

Field Book: 13 Page: 72

G (SOUTHWEST CORNER)

Date Located: 8/16/18
By: SEM
Monument Description: MAG NAIL w/ CO TAG
Monument Witnesses: SEE Pg 300 "C"

Field Book: 10 Page: 65

H (SOUTH QUARTER CORNER)

Date Located: 4/24/19
By: SEM MWH
Monument Description: 1/2" REBAR w/ CAP
Monument Witnesses: 1/2" REBAR w/ CAP NW 18.40'
1/2" REBAR w/ CAP SW 22.20'

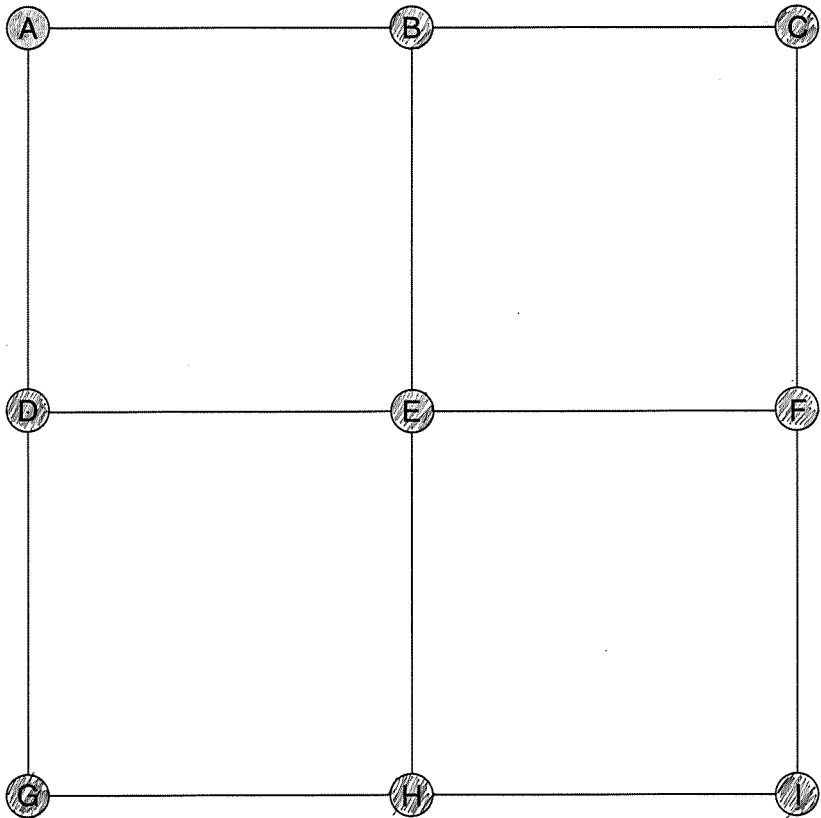
Field Book: 13 Page: 38

I (SOUTHEAST CORNER)

Date Located: _____
By: _____
Monument Description: _____
Monument Witnesses: SEE PAGE 301 "C"
NE COR. 24-33-5

Field Book: _____ Page: _____

ADDITIONAL NOTES



E (CENTER OF SECTION)

Date Located: 5/8/19
By: SEM MWH
Monument Description: MAG NAIL w/CO TAG
Monument Witnesses: 1/2" REBAR w/CAP NW 20.09'
S. FACE RR RAIL FCP N 16.55'
1/2" REBAR w/CAP NE 20.34'
Field Book: 13 Page: 71

F (EAST QUARTER CORNER)

Date Located: 5/8/19
By: SEM MWH
Monument Description: MAG NAIL w/CO TAG
Monument Witnesses: NAIL IN B. CAP POWER POLE NE 44.61'
NAIL IN B. CAP ANCHOR POLE ESE 27.14'
NAIL IN B. CAP NIPSCO POLE SW 63.02'
Field Book: 13 Page: 70

A (NORTHWEST CORNER)

Date Located: _____
By: _____
Monument Description: _____
Monument Witnesses: SEE PAGE 288 "G"
SW COR. 11-33-5
Field Book: _____ Page: _____

G (SOUTHWEST CORNER)

Date Located: 4/24/19
By: SEM MWH
Monument Description: BRONZE MONUMENT
Monument Witnesses: 1/2" REBAR w/CAP NW 30.56'
1/2" REBAR w/CAP NE 32.16'
NAIL IN B. CAP REMG POLE SE 16.35'
Field Book: 13 Page: 40

B (NORTH QUARTER CORNER)

Date Located: 5/8/19
By: SEM MWH
Monument Description: MAG NAIL w/CO TAG
Monument Witnesses: SEE Pg 238 "H"
Field Book: 13 Page: 73

H (SOUTH QUARTER CORNER)

Date Located: 4/24/19
By: SEM MWH
Monument Description: MAG NAIL w/CO TAG
Monument Witnesses: 1/2" REBAR w/CAP NE 20.41'
1/2" REBAR w/CAP SE 20.98'
Field Book: 13 Page: 39

C (NORTHEAST CORNER)

Date Located: 5/8/19
By: SEM MWH
Monument Description: BRONZE MONUMENT
Monument Witnesses: SEE Pg 289 "G"
Field Book: 13 Page: 74

I (SOUTHEAST CORNER)

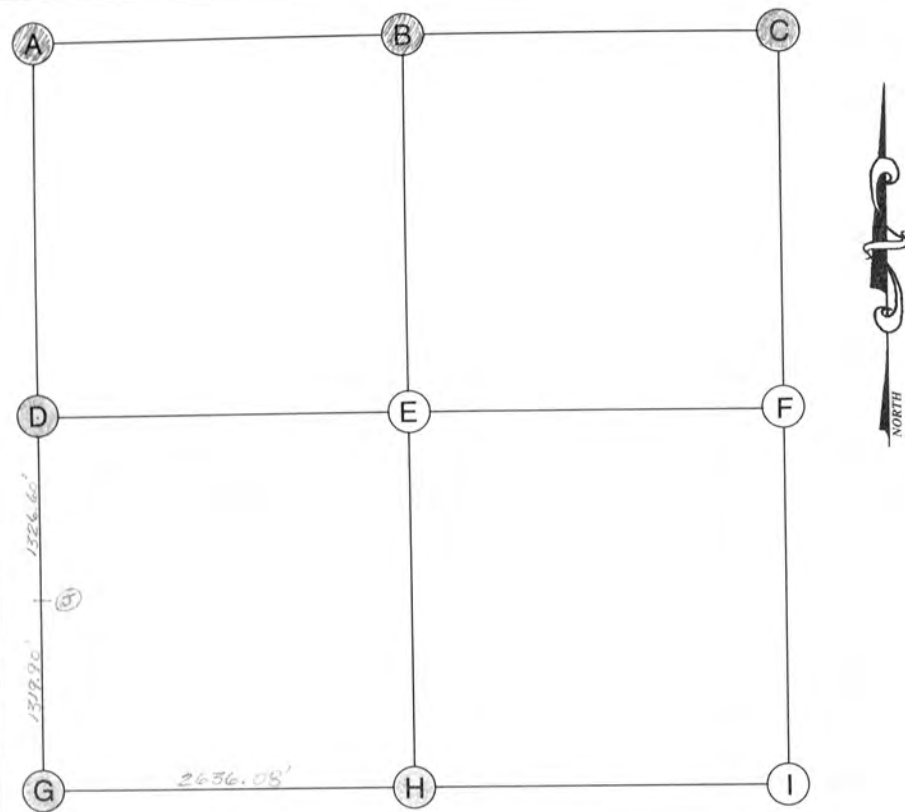
Date Located: 8/16/18
By: SEM
Monument Description: MAG NAIL w/CO TAG
Monument Witnesses: SEE Pg 300 "C"
Field Book: 10 Page: 65

D (WEST QUARTER CORNER)

Date Located: 5/8/19
By: SEM MWH
Monument Description: RR SPIKE
Monument Witnesses: NAIL IN B. CAP REMG POLE NE 43.26'
1/2" REBAR w/CAP SE 41.42'
FO "WALKER" CAPPED IRON SW 22.19'
Field Book: 13 Page: 72

ADDITIONAL NOTES

Prairie
15-33-5



A (NORTHWEST CORNER)

Date Located: 11/1/16
 By: SEM
 Monument Description: FO 1/2" REBAR 6" DEEP
 Monument Witnesses: SEE Pg 287 "G"

Field Book: 5 Page: 29

B (NORTH QUARTER CORNER)

Date Located: 11/1/16
 By: SEM
 Monument Description: FO MAG NAIL FUSH
 Monument Witnesses: SEE Pg 287 "H"

Field Book: 5 Page: 30

C (NORTHEAST CORNER)

Date Located: _____
 By: _____
 Monument Description: _____
 Monument Witnesses: SEE PAGE 288 "6"
SW COR 11-33-5

Field Book: _____ Page: _____

D (WEST QUARTER CORNER)

Date Located: _____
 By: _____
 Monument Description: _____
 Monument Witnesses: SEE PAGE 282 "F"
E 1/4 POST 16-33-5

Field Book: _____ Page: _____

E (CENTER OF SECTION)

Date Located: _____
 By: _____
 Monument Description: _____
 Monument Witnesses: _____

Field Book: _____ Page: _____

F (EAST QUARTER CORNER)

Date Located: _____
 By: _____
 Monument Description: _____
 Monument Witnesses: _____

Field Book: _____ Page: _____

G (SOUTHWEST CORNER)

Date Located: _____
 By: _____
 Monument Description: _____
 Monument Witnesses: SEE PAGE 293 "I" THIS BOOK
SE COR 16-33-5

Field Book: _____ Page: _____

H (SOUTH QUARTER CORNER)

Date Located: 6-10-96
 By: RTK WEN
 Monument Description: RAILROAD SPIKE
 Monument Witnesses: OLD TIES: RIP 34'SW
RIP 34.0'SE
HICKORY 19.3' NW
SEE Pg 299 "B"

Field Book: 4 Page: 62

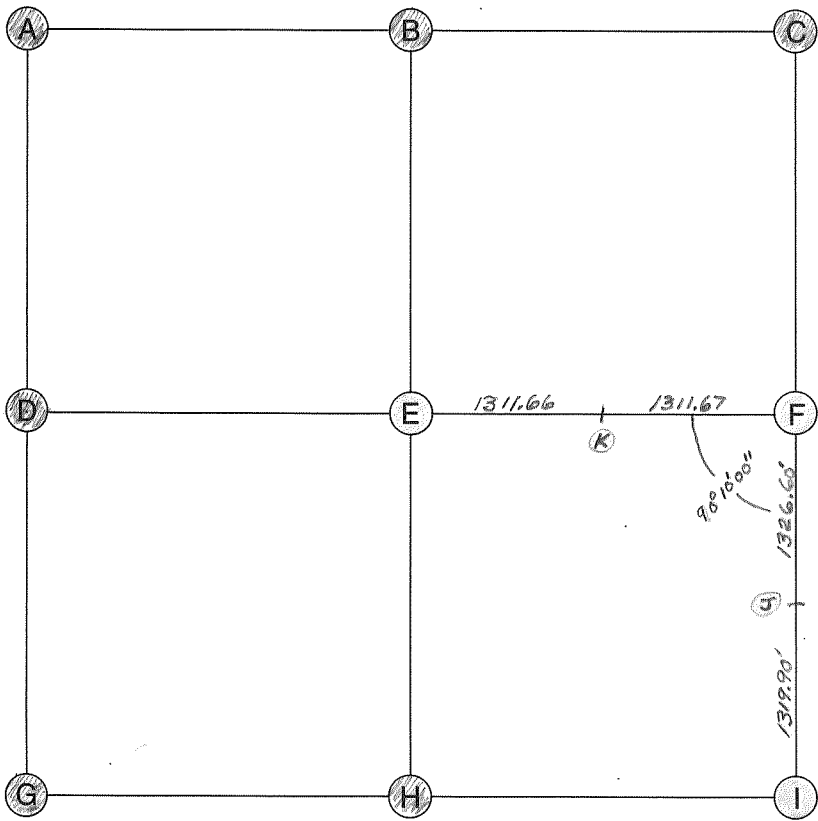
I (SOUTHEAST CORNER)

Date Located: _____
 By: _____
 Monument Description: _____
 Monument Witnesses: _____

Field Book: _____ Page: _____

ADDITIONAL NOTES

① PK NAIL 1/5/97



E (CENTER OF SECTION)

Date Located: 11/5/97 10/18/17 UPDATED SDM
By: RTK MEK
Monument Description: PK NAIL
Monument Witnesses: 4 8" DIA CONC FILLED PINE POST NW 24.55'
4 RR RAIL FCP N 15.29'
4 5" DIA STEEL FCP S 15.32'
Field Book: 8 Page: 13

F (EAST QUARTER CORNER)

Date Located: 11/5/97 10/18/17 UPDATED SDM
By: RTK MEK
Monument Description: 3/4" IRON BAR
Monument Witnesses: 1/2" REBAR w/CAP NE 24.86'
NAIL w B. CAP NIPSCO POLE E 22.85'
1/2" REBAR w/CAP SE 27.42'
Field Book: 8 Page: 14

G (SOUTHWEST CORNER)

Date Located: 10/6/15
By: DR MOYER
Monument Description: FO PK NAIL 2" DEEP
Monument Witnesses: EAST FACE OF A 15" TAPERED CONC
FENCE CORNER POST 20.21' W
WEST FACE OF A RR RAIL FCP 20.22' E
NAIL IN TAG IN POWER POLE SE 53.35'
Field Book: 3 Page: 23

H (SOUTH QUARTER CORNER)

Date Located: 2/13/18
By: SDM
Monument Description: _____
Monument Witnesses: _____
Field Book: 8 Page: 69

I (SOUTHEAST CORNER)

Date Located: 6/10/96 4/20/18 UPDATED SDM
By: RTK + MEK
Monument Description: PK NAIL FO RR SPIKE
Monument Witnesses: PK NAIL 1.65' WEST
RIP 20' WEST
Field Book: 9 Page: 42

A (NORTHWEST CORNER)

Date Located: 4/11/18
By: SDM
Monument Description: FO PK NAIL
Monument Witnesses: SEE Pg 286 "G"
Field Book: 9 Page: 29

B (NORTH QUARTER CORNER)

Date Located: 4/11/18
By: SDM
Monument Description: FO RR SPIKE FLUSH
Monument Witnesses: SEE Pg 286 "H"
Field Book: 9 Page: 30

C (NORTHEAST CORNER)

Date Located: 11/1/16
By: SDM
Monument Description: FO 1/2" REBAR 6" DEEP
Monument Witnesses: SEE Pg 287 "G"
Field Book: 5 Page: 29

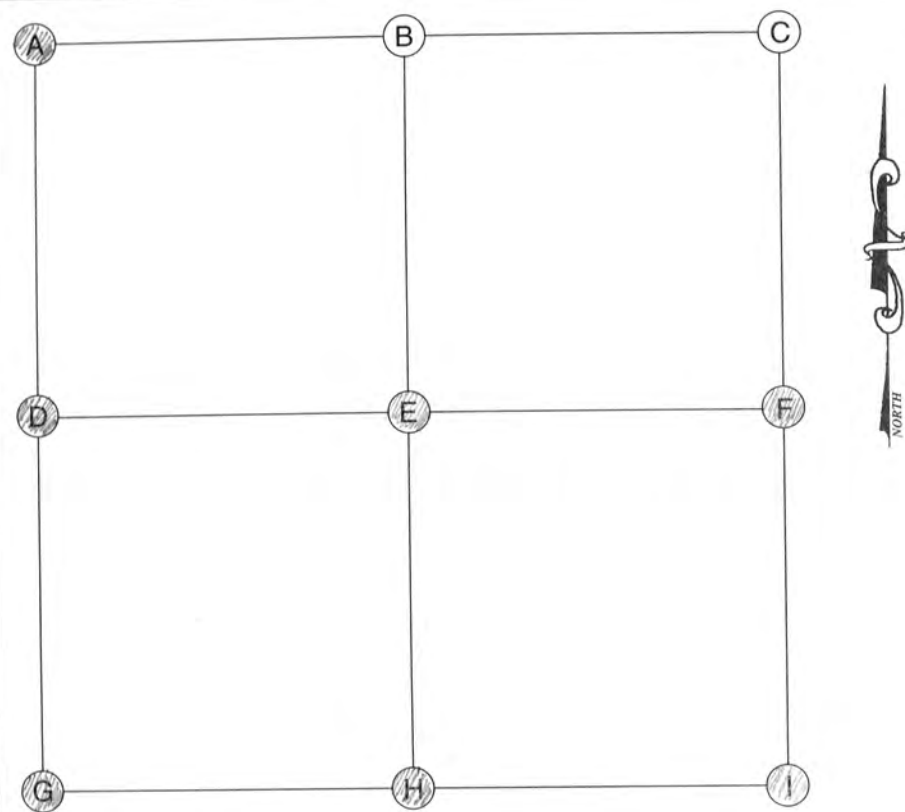
D (WEST QUARTER CORNER)

Date Located: 10/6/15
By: DR MOYER
Monument Description: FO 5/8" REBAR FLUSH
Monument Witnesses: SEE Pg 294 "F"
Field Book: 3 Page: 22

ADDITIONAL NOTES

⑦ SEE PAGE 292 "J" THIS BOOK
⑧ 3/4" IRON BAR 01' NORTH OF LINE

Prairie
17-33-5



A (NORTHWEST CORNER)

Date Located: 5/3/17
 By: SRM
 Monument Description: FO RR SPIKE
 Monument Witnesses: SEE Pg 295 "C"

Field Book: 6 Page: 74

B (NORTH QUARTER CORNER)

Date Located: _____
 By: _____
 Monument Description: _____
 Monument Witnesses: _____

Field Book: _____ Page: _____

C (NORTHEAST CORNER)

Date Located: _____
 By: _____
 Monument Description: _____
 Monument Witnesses: _____

Field Book: _____ Page: _____

D (WEST QUARTER CORNER)

Date Located: 4/25/17
 By: SRM
 Monument Description: SET MAG NAIL IN CO. TAG
 Monument Witnesses: SEE Pg 295 "F"

Field Book: 6 Page: 67

E (CENTER OF SECTION)

Date Located: 10/6/15
 By: SR MOYER
 Monument Description: FO RR SPIKE FLUSH
 Monument Witnesses: SOUTH FACE OF RR RAIL FCP 17.84' N
NORTH FACE OF RR RAIL FCP 17.85' S
SET 1/2" REBAR WITH WITNESS CAP 26.64' SW

Field Book: 3 Page: 23

F (EAST QUARTER CORNER)

Date Located: 10/6/15
 By: SR MOYER
 Monument Description: FO 5/8" REBAR FLUSH
 Monument Witnesses: NAIL IN BOTTLE CAP IN P. Pole 28.20' NE
CENTER OF RR RAIL FCP BROKEN OFF AT GROUND LEVEL
26.74' SW
1/2" REBAR WITH WITNESS CAP 33.95' NE

Field Book: 3 Page: 22

G (SOUTHWEST CORNER)

Date Located: 5/1/17
 By: SRM
 Monument Description: FO RR SPIKE FLUSH
 Monument Witnesses: NAIL IN B. CAP REMC 0011 NNE 100.07'
4 RR RAIL FCP E 20.0'
1/2" REBAR w/CAP SE 26.33

Field Book: 6 Page: 72

H (SOUTH QUARTER CORNER)

Date Located: 2/16/17
 By: SRM
 Monument Description: FO RR RAIL FCP
 Monument Witnesses: _____

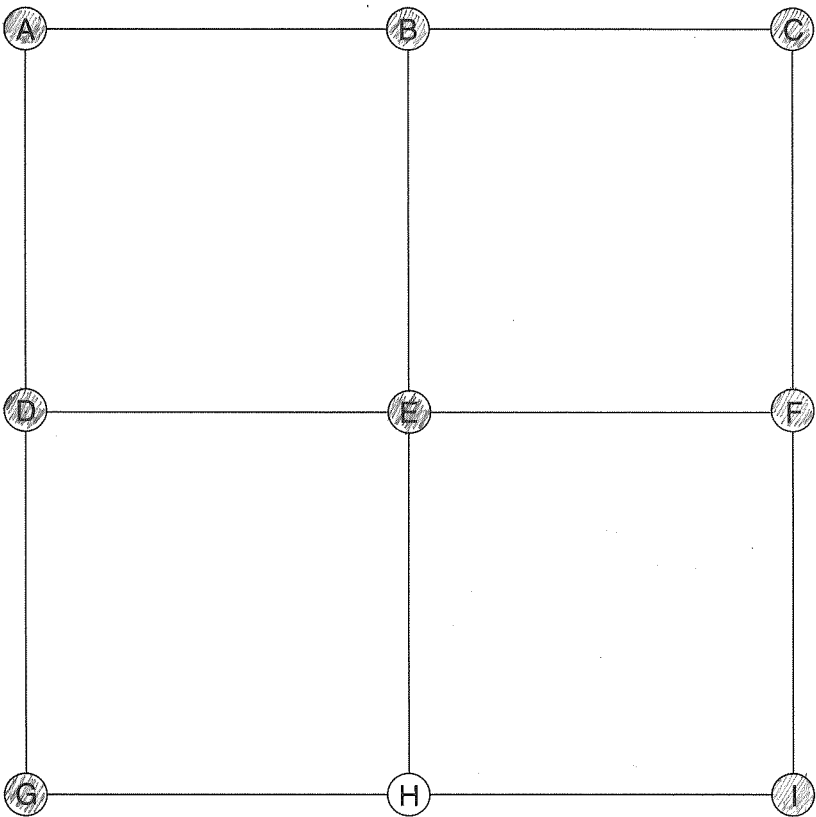
Field Book: 6 Page: 11

I (SOUTHEAST CORNER)

Date Located: 10/6/15
 By: SR MOYER
 Monument Description: FO PK NAIL 2" DEEP
 Monument Witnesses: SEE Pg 293 "G"

Field Book: 3 Page: 23

ADDITIONAL NOTES



E (CENTER OF SECTION)

Date Located: 10/1/20
By: SRM MWH
Monument Description: SET 1/2" REBAR w/CAP
Monument Witnesses: 1/2" REBAR NO CAP N 390.00'

Field Book: 19 Page: 44

F (EAST QUARTER CORNER)

Date Located: 4/25/17
By: SRM
Monument Description: FO PK NAIL, REPLACED WITH MAG NAIL
Monument Witnesses: NAIL IN B. CAP IN P.P. NNE 43.80'
1/2" REBAR w/CAP SE 40.72'
NAIL IN B. CAP IN P.P. SW 45.54'

Field Book: 6 Page: 67

A (NORTHWEST CORNER)

Date Located: 4/10/19
By: SRM MWH
Monument Description: 3" PK NAIL
Monument Witnesses: SEE Pg 36 "I"

Field Book: 13 Page: 12

G (SOUTHWEST CORNER)

Date Located: 6/12/19
By: SRM MWH
Monument Description: MAG NAIL
Monument Witnesses: SEE Pg 37 "I"

Field Book: 14 Page: 70

B (NORTH QUARTER CORNER)

Date Located: 5/3/17
By: SRM
Monument Description: SET 1/2"x1/6" REBAR w/CAP
Monument Witnesses: 4 ER RAIL FCP W 20.05'
1/2" REBAR w/CAP SE 30.92'
1/2" REBAR w/CAP SW 35.42'

Field Book: 6 Page: 73

H (SOUTH QUARTER CORNER)

Date Located: _____
By: _____
Monument Description: _____
Monument Witnesses: _____

Field Book: _____ Page: _____

C (NORTHEAST CORNER)

Date Located: 5/3/17
By: SRM
Monument Description: FORR SPIKE
Monument Witnesses: 1/2" REBAR w/CAP BASE OF TREE NW 46.53'
NAIL IN B. CAP IN POWER POLE ESE 71.48'
NAIL IN B. CAP IN POWER POLE SSE 76.18'
4 ER RAIL FCP LEAVING SW W 31.2'

Field Book: 6 Page: 74

I (SOUTHEAST CORNER)

Date Located: 5/1/17
By: SRM
Monument Description: FORR SPIKE FLUSH
Monument Witnesses: SEE Pg 294 "G"

Field Book: 6 Page: 72

D (WEST QUARTER CORNER)

Date Located: 6/12/19
By: SRM MWH
Monument Description: MAG NAIL
Monument Witnesses: SEE Pg 37 "F"

Field Book: 14 Page: 71

ADDITIONAL NOTES