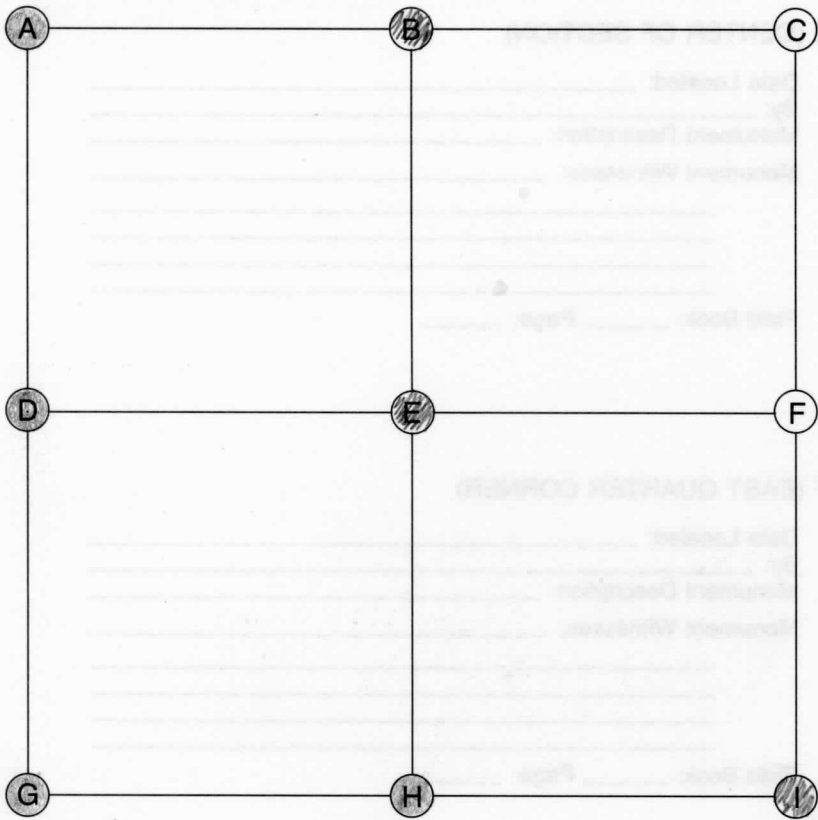


Plain
19-33-6



E (CENTER OF SECTION)

Date Located: 3/19/18
By: SRM
Monument Description: FORR SPIKE
Monument Witnesses: 1/2" REBAR W/CAP NW 27.45'
RR RAIL FCP E 22.15'
1/2" REBAR W/CAP SW 42.52'
FACE OF ANGLE IRON FCP W 22.05'

Field Book: 9 Page: 10

F (EAST QUARTER CORNER)

Date Located: _____
By: _____
Monument Description: _____
Monument Witnesses: _____

Field Book: _____ Page: _____

A (NORTHWEST CORNER)

Date Located: _____
By: _____
Monument Description: _____
Monument Witnesses: _____

Field Book: _____ Page: _____

G (SOUTHWEST CORNER)

Date Located: _____
By: _____
Monument Description: _____
Monument Witnesses: SEE PAGE 271 "A"
NW 30-33-6

Field Book: _____ Page: _____

B (NORTH QUARTER CORNER)

Date Located: 3/19/18
By: SRM
Monument Description: FORR SPIKE
Monument Witnesses: 1/2" REBAR W/CAP NW 42.40'
NAIL IN B. CAP IN POWER POLE NE 23.81'
RR RAIL FCP SSE 34.5'

Field Book: 9 Page: 11

H (SOUTH QUARTER CORNER)

Date Located: 3/19/18
By: SRM
Monument Description: FORR SPIKE 6" DEEP, SET MAG NAIL OVER
Monument Witnesses: NAIL IN B. CAP NIPSCO PP WNW 53.02'
NAIL IN B. CAP IN POWER POLE NNE 59.48'
NAIL IN B. CAP NIPSCO PP NE 31.35'
1/2" REBAR

Field Book: 1 Page: 54 UPDATED

C (NORTHEAST CORNER)

Date Located: _____
By: _____
Monument Description: _____
Monument Witnesses: _____

Field Book: _____ Page: _____

I (SOUTHEAST CORNER)

Date Located: 3/14/18
By: SRM
Monument Description: MAG NAIL W/TAG OVER BRONZE MARKER
Monument Witnesses: NAIL IN B. CAP NIPSCO P. POLE NE 32.47'
NAIL IN B. CAP NIPSCO P. POLE SSE 59.87'
1/2" REBAR W/CAP SW 45.21'

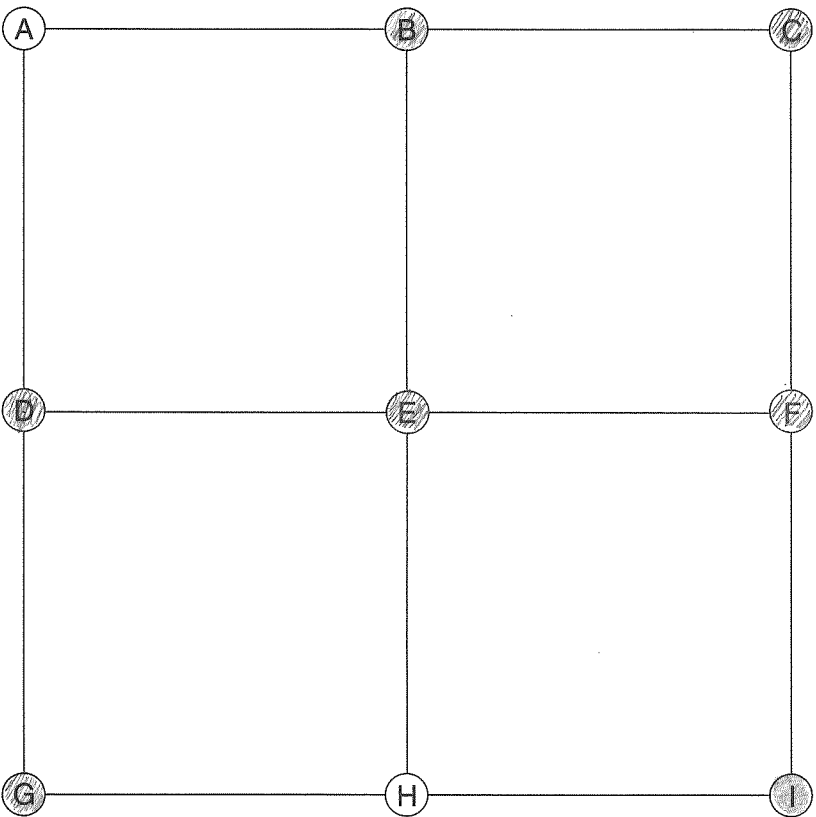
Field Book: 9 Page: 7

D (WEST QUARTER CORNER)

Date Located: _____
By: _____
Monument Description: _____
Monument Witnesses: SEE PAGE 301 "F"
E 1/4 POST 24-33-5

Field Book: _____ Page: _____

ADDITIONAL NOTES



E (CENTER OF SECTION)

Date Located: 4/8/19
By: SRM
Monument Description: 6"x8" wood FCP
Monument Witnesses: 3/4" iron pipe w 134'

Field Book: 13 Page: 10

F (EAST QUARTER CORNER)

Date Located: 8/30/16
By: SRMOYER
Monument Description: SET 4" GIN SPINDLE
Monument Witnesses: RR TRACKS W 50.145'
1/2" REBAR w/CAP 9' to E/P NE 33.70'
MAG NAIL IN POWER POLE ENE 18.42'
RR RAIL FCP E 20.13'

Field Book: 4 Page: 57
STATE PLANE COORDINATES PHASE II 2/2018

A (NORTHWEST CORNER)

Date Located: _____
By: _____
Monument Description: _____
Monument Witnesses: _____

Field Book: _____ Page: _____

G (SOUTHWEST CORNER)

Date Located: 3/14/18
By: SRM
Monument Description: MAG NAIL w/TAG OVER BRONZE MARKER
Monument Witnesses: SEE P. 271 "C"

Field Book: 9 Page: 7
STATE PLANE COORDINATES PHASE III 2/2019

B (NORTH QUARTER CORNER)

Date Located: 9/11/19
By: SRM MWH
Monument Description: SET MAG NAIL w/CO TAG
Monument Witnesses: "WARD" CAPPED IRON NW 63.74'
RR RAIL FCP W 39.8'
NAIL IN B CAP NIPSCO POLE NE 51.64'
1/2" REBAR w/CAP SW 39.12'

Field Book: 17 Page: 21

H (SOUTH QUARTER CORNER)

Date Located: _____
By: _____
Monument Description: _____
Monument Witnesses: _____

Field Book: _____ Page: _____

C (NORTHEAST CORNER)

Date Located: 8/31/16
By: SRMOYER
Monument Description: FD BRONZE MARKER
Monument Witnesses: NAIL IN B CAP IN P.P. NE 42.83'
1/2" REBAR w/CAP SE 24.79'
RR MAIN TRACK W 56.86'

Field Book: 4 Page: 58
STATE PLANE COORDINATES PHASE III 2/2019

I (SOUTHEAST CORNER)

Date Located: _____
By: _____
Monument Description: _____
Monument Witnesses: SEE "C" PAGE 270
NE 29-33-6

Field Book: _____ Page: _____

ADDITIONAL NOTES

D (WEST QUARTER CORNER)

Date Located: 7/6/20
By: SRMOYER
Monument Description: RR RAIL FCP
Monument Witnesses: 44' DIA TULIP TREE NE 10.8'
40' DIA TULIP TREE N 22'

Field Book: 18 Page: 77



Date Located: _____
By: _____
Monument Description: _____
Monument Witnesses: _____

Field Book: _____ Page: _____

Date Located: _____
By: _____
Monument Description: _____
Monument Witnesses: _____

Field Book: _____ Page: _____

Date Located: 8/31/16
By: JR MOYER
Monument Description: FO BRONZE MARKER
Monument Witnesses: SEE Pg 261 "C"

Field Book: 4 Page: 58

Date Located: _____
By: _____
Monument Description: _____
Monument Witnesses: SEE PAGE 270 "C"
NE 29-33-6

Field Book: _____ Page: _____

Date Located: _____
By: _____
Monument Description: _____
Monument Witnesses: _____

Field Book: _____ Page: _____

Date Located: _____
By: _____
Monument Description: _____
Monument Witnesses: _____

Field Book: _____ Page: _____

Date Located: 4/11/16
By: SEM
Monument Description: FO BRONZE MONUMENT FLUSH
Monument Witnesses: SEE Pg 257 "I"

Field Book: 3 Page: 44

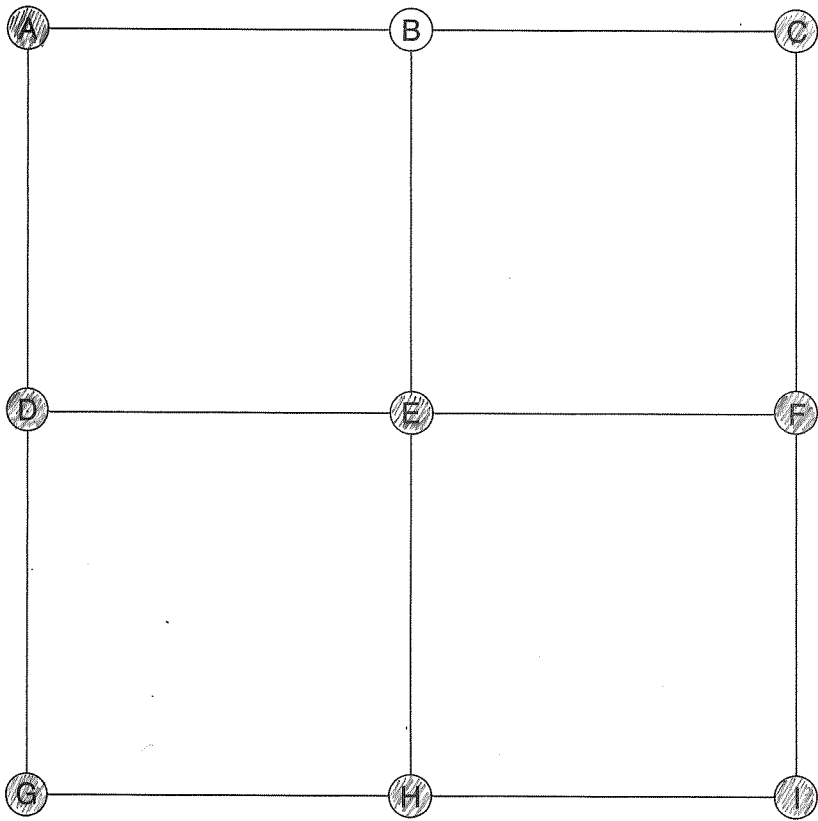
Date Located: 5/16/18
By: SEM & MH
Monument Description: FO PK NAIL 4 1/2" DEEP
Monument Witnesses: SEE Pg 269 "C"

Field Book: 9 Page: 71

Date Located: 8/30/16
By: JRM
Monument Description: SET 4" GIN SPINDLE
Monument Witnesses: SEE Pg 261 "F"

Field Book: 4 Page: 57

[illegible]



E (CENTER OF SECTION)

Date Located: 4/19/18
By: SRM
Monument Description: FORR SPIKE
Monument Witnesses: NAIL IN B. CAP NIPSCO POLE NW 33.00'
NAIL IN B. CAP TRANSFORMER POLE ENE 76.77'
1/2" REBAR W/CAP SE 21.02'
1/2" REBAR W/CAP SW 27.75'
Field Book: 9 Page: 40
STATE PLANE COORDINATES PHASE III 2/2019

F (EAST QUARTER CORNER)

Date Located: 4/19/18
By: SRM
Monument Description: FO 3/4" SQ BOLT
Monument Witnesses: NAIL IN B. CAP NIPSCO PP N 15.63'
& 4" DIA STEEL CONC FILLED FCP N 16.8'
NAIL IN B. CAP NIPSCO PP S 15.95'
1/2" REBAR W/CAP SW 34.40'
Field Book: 9 Page: 39
STATE PLANE COORDINATES PHASE III 2/2019

A (NORTHWEST CORNER)

Date Located: 4/11/16
By: SRM
Monument Description: FO BRONZE MONUMENT FLUSH
Monument Witnesses: SEE Pg 257 "I"
Field Book: 3 Page: 44

G (SOUTHWEST CORNER)

Date Located: 5/16/18
By: SRM & MWH
Monument Description: FO PK NAIL 4 1/2" DEEP
Monument Witnesses: SEE Pg 269 "C"
Field Book: 9 Page: 71
STATE PLANE COORDINATES PHASE III 2/2019

B (NORTH QUARTER CORNER)

Date Located: _____
By: _____
Monument Description: _____
Monument Witnesses: _____
Field Book: _____ Page: _____

H (SOUTH QUARTER CORNER)

Date Located: 10/1/20
By: SRM MWH
Monument Description: RR RAIL FCP
Monument Witnesses: _____
Field Book: 19 Page: 45

C (NORTHEAST CORNER)

Date Located: 4/13/21
By: SRM MWH
Monument Description: 3" x 5" I-BEAM FCP
Monument Witnesses: _____
Field Book: 19 Page: 78

I (SOUTHEAST CORNER)

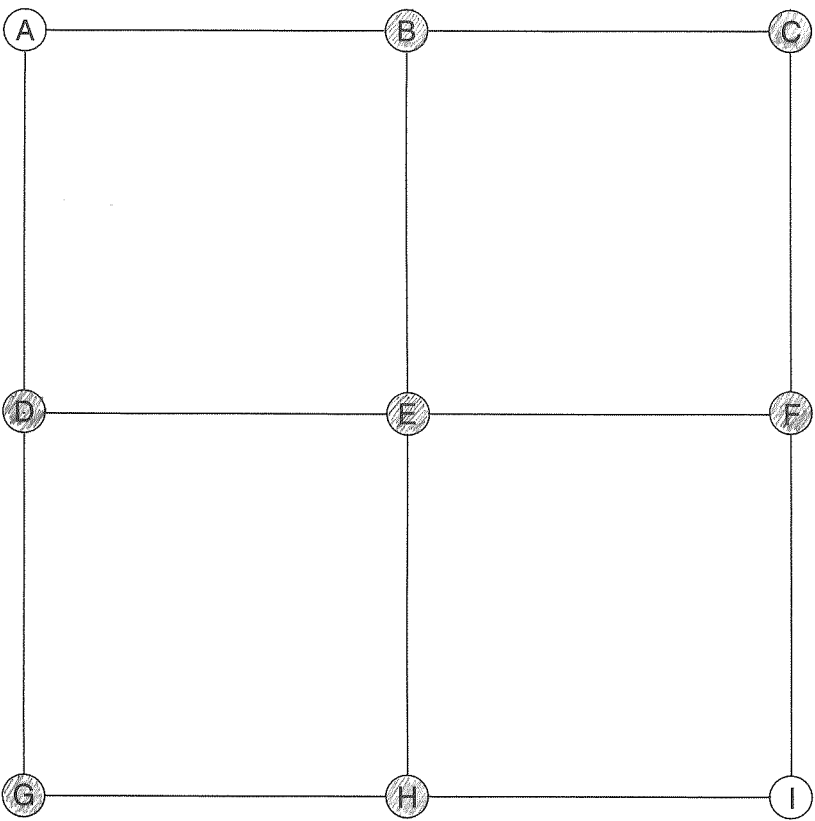
Date Located: 3/2/18
By: SRM
Monument Description: FO 1" IRON PIPE
Monument Witnesses: & RAILROAD RAIL FCP N 16.1'
NAIL IN B. CAP IN POWER POLE NNE 16.90'
1/2" REBAR W/CAP SW 12.58'
Field Book: 9 Page: 2

D (WEST QUARTER CORNER)

Date Located: 8/1/18
By: SRM
Monument Description: SEE MAG NAIL W/ CO TAG
Monument Witnesses: RR SPIKE IN & INTERSECTION S 96.20'
MAG NAIL W/ CO TAG IN WINGWALL SE 36.53'
IDNE BENCHMARK IN WINGWALL SW 36.00'
Field Book: 10 Page: 49
STATE PLANE COORDINATES PHASE III 2/2019

ADDITIONAL NOTES

Plain
23-33-6



E (CENTER OF SECTION)

Date Located: 9/26/17
By: JRM
Monument Description: FD 3" SPIKE NAIL 5" DEEP
Monument Witnesses: NAIL IN B. CAP P. POLE NW 45.22'
FD 5/8" REBAR "KIMPEL" CAP ESE 61.51'
FD 3/8" REBAR "KIMPEL" CAP SSE 60.86'
NAIL IN B. CAP NIPSCO P. POLE WSW 49.08'
Field Book: 7 Page: 71
STATE PLANE COORDINATES PHASE II 2/2018

F (EAST QUARTER CORNER)

Date Located: 4/19/18
By: JRM
Monument Description: FD 2" PK NAIL 3" DEEP
Monument Witnesses: 1/2" REBAR W/CAP NW 50.43'
1/2" REBAR W/CAP NE 43.20'
NAIL IN B. CAP NIPSCO P. POLE SE 26.00'
Field Book: 9 Page: 38
STATE PLANE COORDINATES PHASE III 2/2019

G (SOUTHWEST CORNER)

Date Located: 3/2/18
By: JRM
Monument Description: FD 1" IRON PIPE
Monument Witnesses: 4" RAILROAD RAIL FCP N 16.1'
NAIL IN B. CAP IN POWER POLE NNE 16.90'
1/2" REBAR W/CAP SW 12.58'
Field Book: 9 Page: 3

H (SOUTH QUARTER CORNER)

Date Located: 6/16/20
By: JRM MWH
Monument Description: FD 5/2" DIA STEEL FCP
Monument Witnesses: MAG NAIL N 513.82'
Field Book: 18 Page: 67

I (SOUTHEAST CORNER)

Date Located: _____
By: _____
Monument Description: _____
Monument Witnesses: _____
Field Book: _____ Page: _____

ADDITIONAL NOTES

A (NORTHWEST CORNER)

Date Located: _____
By: _____
Monument Description: _____
Monument Witnesses: _____
Field Book: _____ Page: _____

B (NORTH QUARTER CORNER)

Date Located: 9/26/17
By: JRM
Monument Description: FD 3/4" BOLT 3" DEEP
Monument Witnesses: 4" RR RAIL FCP E 19.95'
NAIL IN B. CAP POWER POLE SSW 101.70'
4" 5" DIA CONG FILLED STEEL FCP SW 27.2'
Field Book: 7 Page: 72
STATE PLANE COORDINATES PHASE II 2/2018

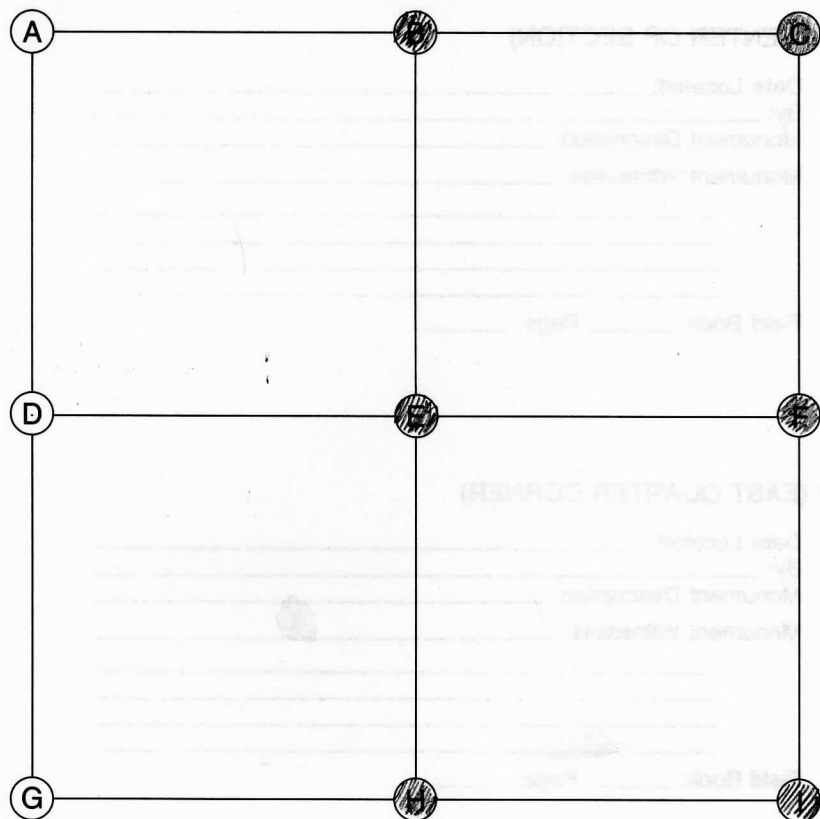
C (NORTHEAST CORNER)

Date Located: 7/9/19
By: JRM MOYER
Monument Description: MAG NAIL
Monument Witnesses: SEE Pg 254 "G"
Field Book: 15 Page: 48

D (WEST QUARTER CORNER)

Date Located: 4/19/18
By: JRM
Monument Description: FD 3/4" SQ HEAD BOLT (BUGGY AXLE)
Monument Witnesses: NAIL IN B. CAP NIPSCO P. POLE N 15.63'
4" DIA STEEL CONG FILLED FCP N 16.8'
NAIL IN B. CAP NIPSCO P. POLE S 15.95'
1/2" REBAR W/CAP SW 34.40'
Field Book: 9 Page: 39
STATE PLANE COORDINATES PHASE III 2/2019

Plain
25-33-6



A (NORTHWEST CORNER)

Date Located: _____
By: _____
Monument Description: _____
Monument Witnesses: _____

Field Book: _____ Page: _____

B (NORTH QUARTER CORNER)

Date Located: 4/25/18
By: SRM
Monument Description: FO RR SPIKE 3" DEEP
Monument Witnesses: ± RR RAIL FCP N 19.95'
1/2" REBAR W/CAP NE 24.53'

Field Book: 9 Page: 48

C (NORTHEAST CORNER)

Date Located: 6/13/91 UPDATED 4/25/18
By: JR MOYER-ECHAINES SRM
Monument Description: 1/2" REBAR W/CAP
Monument Witnesses: "+" CUT IN RR RAIL FCP SSE 23.86'
1/2" REBAR W/CAP WNW 15.65'

Field Book: 1 Page: 22
9 Pg 49

D (WEST QUARTER CORNER)

Date Located: _____
By: _____
Monument Description: _____
Monument Witnesses: _____

Field Book: _____ Page: _____

E (CENTER OF SECTION)

Date Located: 4/25/18
By: SRM
Monument Description: RAILROAD RAIL FCP
Monument Witnesses: "GREYSTONE" SUBDIVISION
PLAT BOOK 12 Pg 33

Field Book: 9 Page: 47

F (EAST QUARTER CORNER)

Date Located: 4/23/18
By: SRM
Monument Description: FO RR SPIKE 3" DEEP
Monument Witnesses: ± RR RAIL FCP W 19.9'
1/2" REBAR W/CAP SW 28.40'

Field Book: 9 Page: 43

G (SOUTHWEST CORNER)

Date Located: _____
By: _____
Monument Description: _____
Monument Witnesses: _____

Field Book: _____ Page: _____

H (SOUTH QUARTER CORNER)

Date Located: 3/28/16
By: SRM
Monument Description: RR SPIKE 3" DEEP
Monument Witnesses: SET 1/2" REBAR W/CAP 27.28' NE
SET NAIL IN BOTTLE CAP IN P. POLE 620/626 21.30' NW
RR RAIL FCP 20.03' SSW

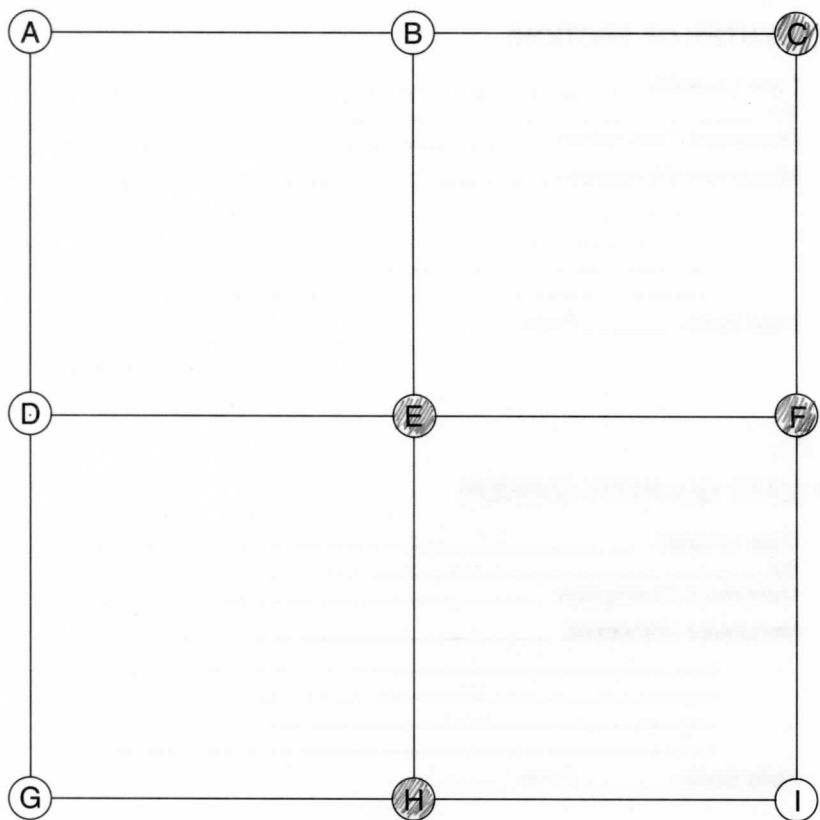
Field Book: 3 Page: 41

I (SOUTHEAST CORNER)

Date Located: 10/25/16
By: SRM
Monument Description: FO RR SPIKE
Monument Witnesses: SEE Pg 40Z "G"

Field Book: 5 Page: 18

ADDITIONAL NOTES



E (CENTER OF SECTION)

Date Located: 6/15/17
 By: SRM
 Monument Description: FD RR SPIKE 6" DEEP
 Monument Witnesses: 1/2" REBAR W/CAP SW 39.95'
NAIL IN B. CAP IN P. POLE NE 59.08

Field Book: 7 Page: 23

F (EAST QUARTER CORNER)

Date Located: 3/2/18
 By: SRM
 Monument Description: FD RAILROAD RAIL FCP
 Monument Witnesses: 4" CONC IDNR MONUMENT SW 1.8'

Field Book: 9 Page: 3

A (NORTHWEST CORNER)

Date Located: _____
 By: _____
 Monument Description: _____
 Monument Witnesses: _____

Field Book: _____ Page: _____

G (SOUTHWEST CORNER)

Date Located: _____
 By: _____
 Monument Description: _____
 Monument Witnesses: _____

Field Book: _____ Page: _____

B (NORTH QUARTER CORNER)

Date Located: _____
 By: _____
 Monument Description: _____
 Monument Witnesses: _____

Field Book: _____ Page: _____

H (SOUTH QUARTER CORNER)

Date Located: 6/9/17
 By: SRM
 Monument Description: FD 1/2" BOLT
 Monument Witnesses: NAIL IN B. CAP IN P. POLE NNE 74.92'
NAIL IN B. CAP IN P. POLE ENE 52.50'

Field Book: 7 Page: 18

C (NORTHEAST CORNER)

Date Located: 3/2/18
 By: SRM
 Monument Description: FD 1" IRON PIPE
 Monument Witnesses: 1/2" RAILROAD RAIL FCP N 16.1'
NAIL IN B. CAP IN POWER POLE NNE 16.90'
1/2" REBAR W/CAP SW 12.58'

Field Book: 9 Page: 2

I (SOUTHEAST CORNER)

Date Located: _____
 By: _____
 Monument Description: _____
 Monument Witnesses: _____

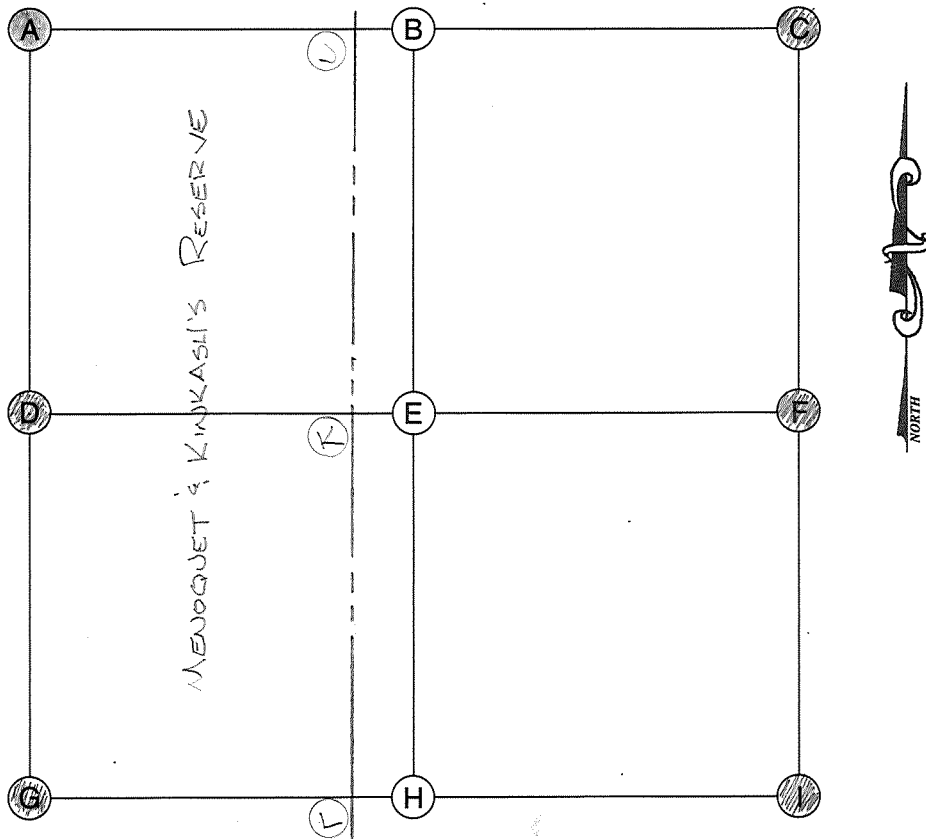
Field Book: _____ Page: _____

D (WEST QUARTER CORNER)

Date Located: _____
 By: _____
 Monument Description: _____
 Monument Witnesses: _____

Field Book: _____ Page: _____

ADDITIONAL NOTES



A (NORTHWEST CORNER)

Date Located: _____
 By: _____
 Monument Description: _____
 Monument Witnesses: SEE PAGE 270 "C"
NE 29-33-6

Field Book: _____ Page: _____

B (NORTH QUARTER CORNER)

Date Located: _____
 By: _____
 Monument Description: _____
 Monument Witnesses: _____

Field Book: _____ Page: _____

C (NORTHEAST CORNER)

Date Located: 5/16/18
 By: DEM & MH
 Monument Description: FO PK NAIL 4 1/2" DEEP
 Monument Witnesses: 1/2" REBAR W/CAP NE 23.88'
1/2" REBAR W/CAP SE 30.61'

Field Book: 9 Page: 71
 STATE PLANE COORDINATES PHASE III 2/2019

D (WEST QUARTER CORNER)

Date Located: 4/4/17
 By: DEM
 Monument Description: FO RR SPIKE 6" DEEP, MAG NAIL OVER TOP
 Monument Witnesses: 1/2" REBAR W/CAP NE 31.42'
NAIL IN TAG IN P. POLE S 16.91'
4 RR RAIL FCP S 20'
1/2" REBAR W/CAP SW 37.90'

Field Book: 6 Page: 52
 STATE PLANE COORDINATES PHASE II 2/2018

E (CENTER OF SECTION)

Date Located: _____
 By: _____
 Monument Description: _____
 Monument Witnesses: _____

Field Book: _____ Page: _____

F (EAST QUARTER CORNER)

Date Located: 5/16/18
 By: DEM & MH
 Monument Description: FO RR SPIKE 4" DEEP
 Monument Witnesses: 1/2" REBAR W/CAP NW 57.51'
1/2" REBAR W/CAP NE 49.55'
NAIL IN B. CAP NIPSCO POLE SW 30.79'

Field Book: 9 Page: 70
 STATE PLANE COORDINATES PHASE III 2/2019

G (SOUTHWEST CORNER)

Date Located: 2/16/16
 By: DEM
 Monument Description: RR SPIKE FLUSH
 Monument Witnesses: FENCE CORNER POST 26.75' NNE
1/2" REBAR W/CAP 38.63' NE
1/2" REBAR W/CAP 46.95' SE
1/2" REBAR W/CAP 48.46' SW

Field Book: 3 Page: 36
 STATE PLANE COORDINATES PHASE II 2/2018

H (SOUTH QUARTER CORNER)

Date Located: _____
 By: _____
 Monument Description: _____
 Monument Witnesses: _____

Field Book: _____ Page: _____

I (SOUTHEAST CORNER)

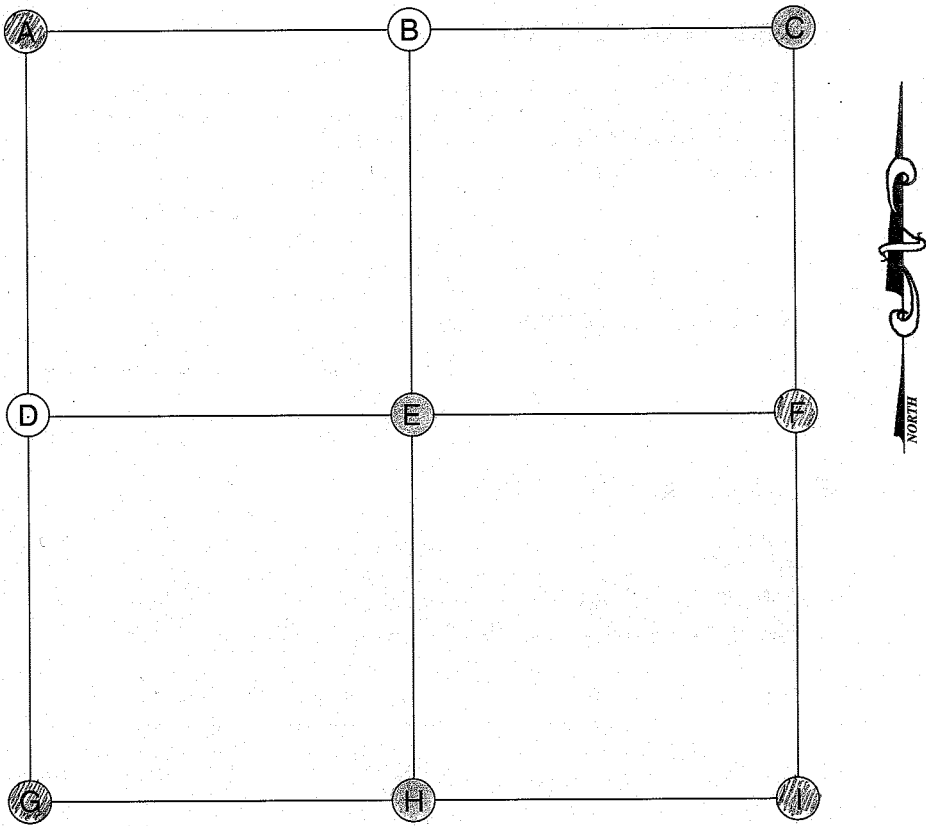
Date Located: 6/4/18
 By: DEM
 Monument Description: MAG NAIL W/ CO TAG
 Monument Witnesses: 1/2" REBAR W/CAP NE 41.59'
1/2" REBAR W/CAP SE 52.97'
NAIL IN B. CAP NIPSCO POLE SW 40.53'

Field Book: 9 Page: 75
 STATE PLANE COORDINATES PHASE III 2/2019

ADDITIONAL NOTES

"K" 8/23/19 DEM MNL FO RR SPIKE
 FIELD BOOK 17 Pg 60

Plain
29-33-6



A (NORTHWEST CORNER)

Date Located: 3/14/18
By: SRM
Monument Description: MAG NAIL W/TAG OVER BRONZE MARKER
Monument Witnesses: SEE Pg 271 "C"

Field Book: 9 Page: 7
STATE PLANE COORDINATES PHASE III 2/2019

B (NORTH QUARTER CORNER)

Date Located: _____
By: _____
Monument Description: _____
Monument Witnesses: _____

Field Book: _____ Page: _____

C (NORTHEAST CORNER)

Date Located: 5/18/2004 4/8/19 SRM
By: MEK
Monument Description: 1" IRON BAR (EXPOSED 0.5')
Monument Witnesses: 1/2" CAPPED REBAR 20.0' S-SW
" " " 20.0' SOUTH
" " " 20.0' E-SE
20'± SOUTH OF SOUTH BANK OF TAPPY RIVER
MULTI-TRUNK MAPLE TREE 6'± WEST

Field Book: 13 Page: 9 SEE "OLD BOOK 4"
SURVEYOR RECORD PAGE 238,9

D (WEST QUARTER CORNER)

Date Located: _____
By: _____
Monument Description: _____
Monument Witnesses: _____

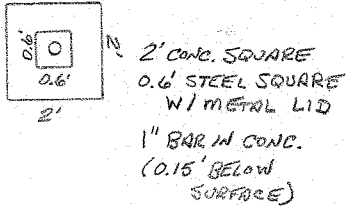
Field Book: _____ Page: _____

E (CENTER OF SECTION)

Date Located: 3/1/99 SEE 8/1/06 UPDATE BELOW
By: MEK
Monument Description: 1" STEEL PIN IN CONCRETE (UNDER STEEL LID)
Monument Witnesses: * "X" IN CONG. BASE OF TRAFFIC LIGHT POLE 62.05' N-NW
* 1/2" REBAR W/CAP 39.12' NORTH (RW MARKER 54' NW OF REBAR)
* NW CORNER CONG. BASE OF TRAFFIC LIGHT POLE 62.25' SOUTH
* "MAG" NAIL (NOW) IN NE FACE NIPSCO POLE #689125
(PK NAIL WAS GONE 8/06) 72.90' E-SE

Field Book: 2 Page: 73

SEE ADDITIONAL NOTES
BELOW!



F (EAST QUARTER CORNER)

Date Located: 4/4/17
By: SRM
Monument Description: RR SPIKE 6" DEEP MAG NAIL OVER
Monument Witnesses: SEE Pg 269 "D"

Field Book: 6 Page: 52
STATE PLANE COORDINATES PHASE II 2/2018

G (SOUTHWEST CORNER)

Date Located: 6/29/17
By: SRM
Monument Description: MAG NAIL W/CO TAG OVER RR SPIKE
Monument Witnesses: SEE Pg 272 "C"

Field Book: 7 Page: 32
STATE PLANE COORDINATES PHASE II 2/2018

H (SOUTH QUARTER CORNER)

Date Located: 8/1/18
By: SRM/MLI
Monument Description: 1" BRASS PIN IN CONG
Monument Witnesses: SE CORNER BRICK SIGN NW 14.34'
SOUTH BOLT TRAFFIC SIGNAL POST NW 100.24'
1/2" REBAR W/CAP NE 75.75'
1/2" REBAR W/CAP SE 72.37'
1/2" REBAR W/CAP SW 99.87'

Field Book: 10 Page: 50

I (SOUTHEAST CORNER)

Date Located: 2/16/16
By: SRM
Monument Description: RR SPIKE FLUSH
Monument Witnesses: SEE Pg 269 "G"

Field Book: 3 Page: 36
STATE PLANE COORDINATES PHASE II 2/2018

ADDITIONAL NOTES

8/1/06 MEK
(E) MONUMENT NOTED ABOVE IS NOW BURIED 2' DUE TO
ROAD CONSTRUCTION. "MAG" NOW @ CORNER
SMALL DIMENSIONS MADE TO THE DIMENSIONS



Field Book: 1 Page: 54
9 Pg 50 4/26/18 SEM

Date Located: _____
By: _____
Monument Description: _____
Monument Witnesses: _____

Field Book: _____ Page: _____

Date Located: 2/26/18
By: DEM
Monument Description: MAG NAIL w/ TAG
Monument Witnesses: NAIL IN B. CAP POWER POLE ENE 58.65'
NAIL IN B. CAP POWER POLE NNE 78.16'
1/2" REBAR w/ CAP WSW 69.22'
1/2" REBAR w/ CAP SW 67.25'

Field Book: 8 Page: 77
2 Pa 47-8/14/2

Date Located: 8/13/92
By: JR MOYER - ECHAINES
Monument Description: PK NAIL
Monument Witnesses: SE CORNER OF 12"x10" CONC. FCP WNW 45.84
SET NAIL IN BOTTLE CAP IN NE. FACE OF PP NNNW 45.21
" " " " " " W. " " ANCHOR P. NNE 47.04
NE CORNER OF 12"x10" CONC. FCP SSW 48.60
" " " " " " WSW 48.18

Field Book: 2 Page: 48 UPDATED 8/14/18 JEM

Date Located: 6/18/92
By: JR MOYER - ECHAINES
Monument Description: P.R. SPIKE
Monument Witnesses: _____
" " " " " " " " " " " "
SET NAIL IN BOTTLE CAP IN NE FACE OF POWER POLE WNW 54.36
" " " " " " " " " " " "
NIPSO P.P. NE 31.70

Field Book: 1 Page: 54 UPDATED 3/19/18 JRM

Date Located: 6/18/92
By: JB MOYER - ER HAINES
Monument Description: P.B. NAIL MAG NAIL w/ TAG
Monument Witnesses: FACE OF A RR RAIL FCP ESS 39.20
FACE OF A RR RAIL FCP SSE 42.20
SET NAIL IN BOTTLE CAP IN NW FACE OF A RR SSW 70.84
" " " " " " " " " " " " WSW 80.30

Field Book: 1 Page: 55 UPDATED 10/2/15 SR MOYER
8 Pg 76 2/26/18 SEM

Date Located: 3/14/18
By: DEM
Monument Description: MAG NAIL w/TAG OVER BRONZE MARKER
Monument Witnesses: NAIL IN B. CAP NIPSCO POLE NE 32.47
NAIL IN B. CAP NIPSCO POLE SSE 59.87'
1/2" REBAR w/CAP SW 45.21'

Field Book: 9 Page: 7

Date Located: 6/29/17
By: SRM
Monument Description: MAG NAIL W/CO TAG OVER RR SPIKE
Monument Witnesses: SEE Pg 272 "C"

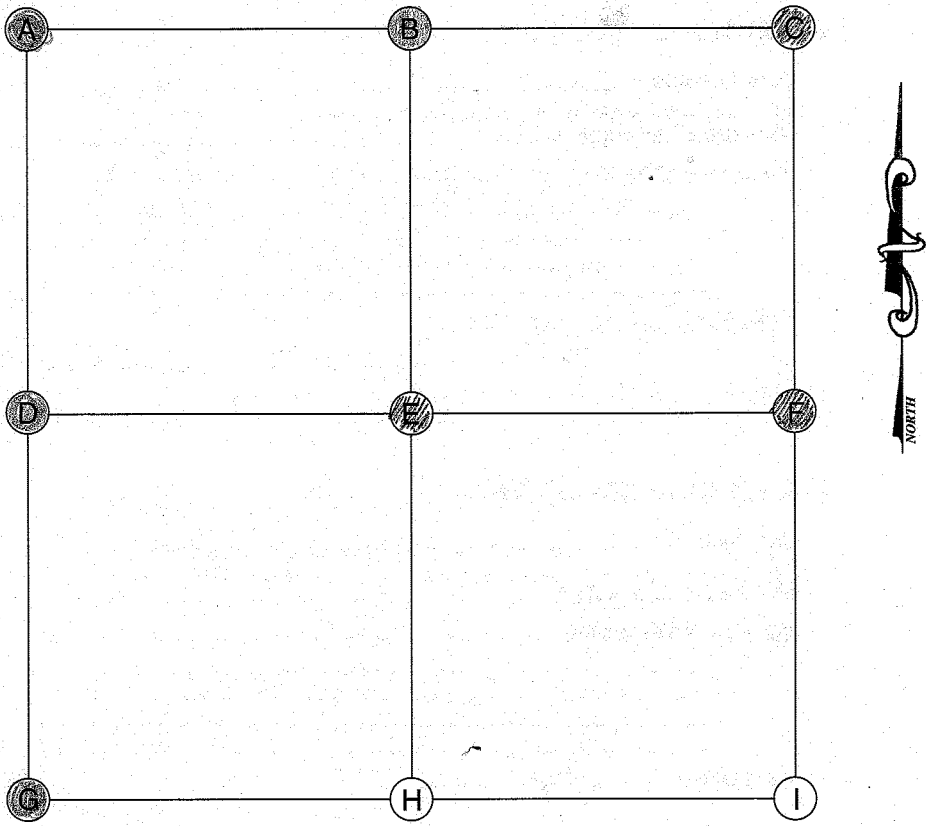
Field Book: 7 Page: 32

Date Located: 8/14/18
By: JRM
Monument Description: FORR SPIKE
Monument Witnesses: 1/2" REBAR W/CAP NE Z8.32'
1/2" DIA STEEL FCP E 20.03'
NAIL IN B. CAP POWER POLE SW 43.73'

Field Book: 10 Page: 62

ADDITIONAL NOTES

Plain
31-33-6



A (NORTHWEST CORNER)
Date Located: 8/14/92 UPDATED 6/29/17 SEM
By: J.P. MOYER - G.C. HAINES
Monument Description: REBAR W/CAP
Monument Witnesses: FD NAIL IN TAG ON TOP OF A 12" DIA FCP NW 42.66'
SET NAIL IN BOTTLE CAP IN SW FACE OF ANCHOR P. WNW 57.08'
" " " " " " NE " " PP ESE 38.37'
" " " " " " W " " " SSE 72.55'
Field Book: 2 Page: 47 UPDATED
8 Pg 77 2/26/18 SEM
STATE PLANE COORDINATES PHASE II 2/2018

B (NORTH QUARTER CORNER)
Date Located: _____
By: _____
Monument Description: _____
Monument Witnesses: SEE PAGE 271 "H"
5/4 Post 30-33-6
Field Book: _____ Page: _____
STATE PLANE COORDINATES PHASE II 2/2018

C (NORTHEAST CORNER)
Date Located: 6/29/17
By: SEM
Monument Description: MAG NAIL W/CO TAG OVER RR SPIKE
Monument Witnesses: MAG NAIL IN POWER POLE N 28.60'
"RE WABO" CAPPED IRON N 24.86'
1/2" REBAR W/CAP ENE 57.92'
1/2" REBAR W/CAP SE 56.72'
4 2" STEEL FCP SW 99.1'
DOT BM F40 ESE 107.85'
Field Book: 7 Page: 32
STATE PLANE COORDINATES PHASE II 2/2018

D (WEST QUARTER CORNER)
Date Located: 6/29/17
By: SEM
Monument Description: FD MAG NAIL W/TAG
Monument Witnesses: 1/2" REBAR W/CAP SE 56.72'
1/2" REBAR W/CAP ENE 57.92'
4 2" STEEL FCP SW 99.1'
DOT BM F40 ESE 107.85'
Field Book: 2 Page: 47
STATE PLANE COORDINATES PHASE II 2/2018

E (CENTER OF SECTION)
Date Located: 3/1/19
By: SEM & M. HOFFMAN
Monument Description: SET MAG NAIL W/TAG
Monument Witnesses: E S. BOLT TRAFFIC SIGNAL POST WNW 57.84'
E S. BOLT TRAFFIC SIGNAL POST ENE 58.29'
Field Book: 12 Page: 25

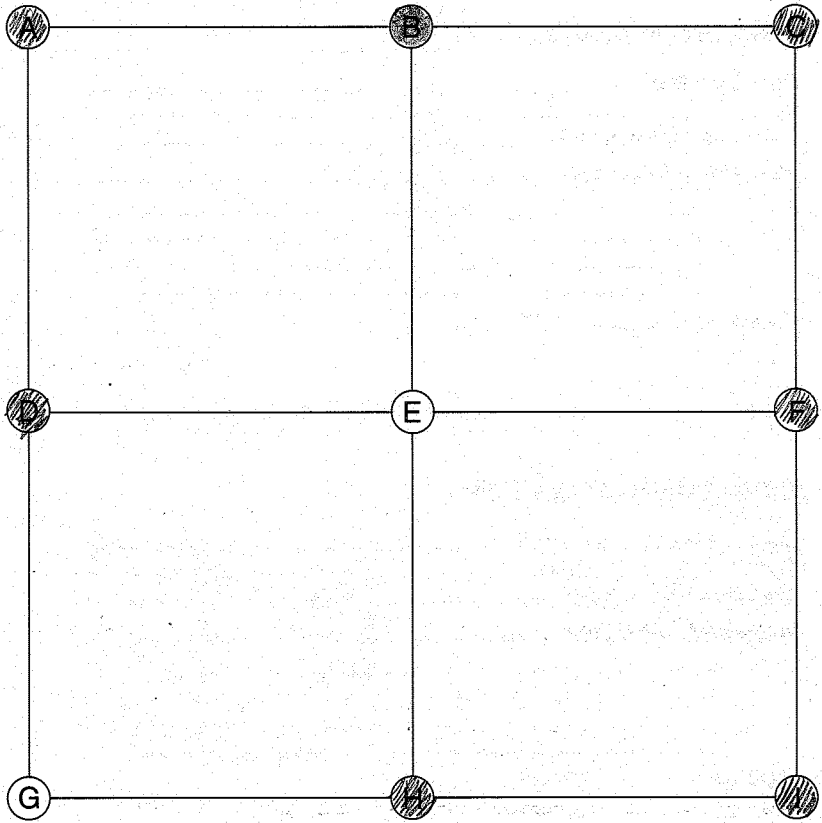
F (EAST QUARTER CORNER)
Date Located: 11/30/17
By: SEM
Monument Description: CONC MONUMENT UNDER WATER
Monument Witnesses: _____
Field Book: 8 Page: 40
STATE PLANE COORDINATES PHASE II 2/2018

G (SOUTHWEST CORNER)
Date Located: _____
By: _____
Monument Description: _____
Monument Witnesses: SEE PAGE 517 "C"
NE COR 1-32-5
Field Book: _____ Page: _____
STATE PLANE COORDINATES PHASE II 2/2018

H (SOUTH QUARTER CORNER)
Date Located: _____
By: _____
Monument Description: _____
Monument Witnesses: _____
Field Book: _____ Page: _____

I (SOUTHEAST CORNER)
Date Located: _____
By: _____
Monument Description: _____
Monument Witnesses: _____
Field Book: _____ Page: _____

ADDITIONAL NOTES



A (NORTHWEST CORNER)

Date Located: 6/29/17
By: SRM
Monument Description: MAG NAIL w/ CO TAG OVER RR SPIKE
Monument Witnesses: SEE Pg 272 "C"

Field Book: 7 Page: 32
STATE PLANE COORDINATES PHASE II 2/2018

B (NORTH QUARTER CORNER)

Date Located: _____
By: _____
Monument Description: _____
Monument Witnesses: SEE S/A POST OF
SEC. 29
(PAGE 270 "H")

Field Book: _____ Page: _____

C (NORTHEAST CORNER)

Date Located: 2/16/16
By: SRM
Monument Description: RR SPIKE FLUSH
Monument Witnesses: SEE Pg 269 "G"

Field Book: 3 Page: 36
STATE PLANE COORDINATES PHASE II 2/2018

D (WEST QUARTER CORNER)

Date Located: 11/30/17
By: SRM
Monument Description: CONC MONUMENT UNDER WATER
Monument Witnesses: _____

Field Book: 8 Page: 40
STATE PLANE COORDINATES PHASE II 2/2018

E (CENTER OF SECTION)

Date Located: _____
By: _____
Monument Description: _____
Monument Witnesses: _____

Field Book: _____ Page: _____

F (EAST QUARTER CORNER)

Date Located: 4/4/17
By: SRM
Monument Description: FD RR SPIKE 5" DEEP, MAG NAIL OVER
Monument Witnesses: SEE Pg 274 "D"

Field Book: 6 Page: 53
STATE PLANE COORDINATES PHASE II 2/2018

G (SOUTHWEST CORNER)

Date Located: _____
By: _____
Monument Description: _____
Monument Witnesses: _____

Field Book: _____ Page: _____

H (SOUTH QUARTER CORNER)

Date Located: 3/1/19
By: SRM & M. HUFFMAN
Monument Description: NO CORNER SET
Monument Witnesses: 1/2" REBAR w/CAP NW 99.94'
1/2" REBAR w/CAP NE 71.37'

Field Book: 12 Page: 24

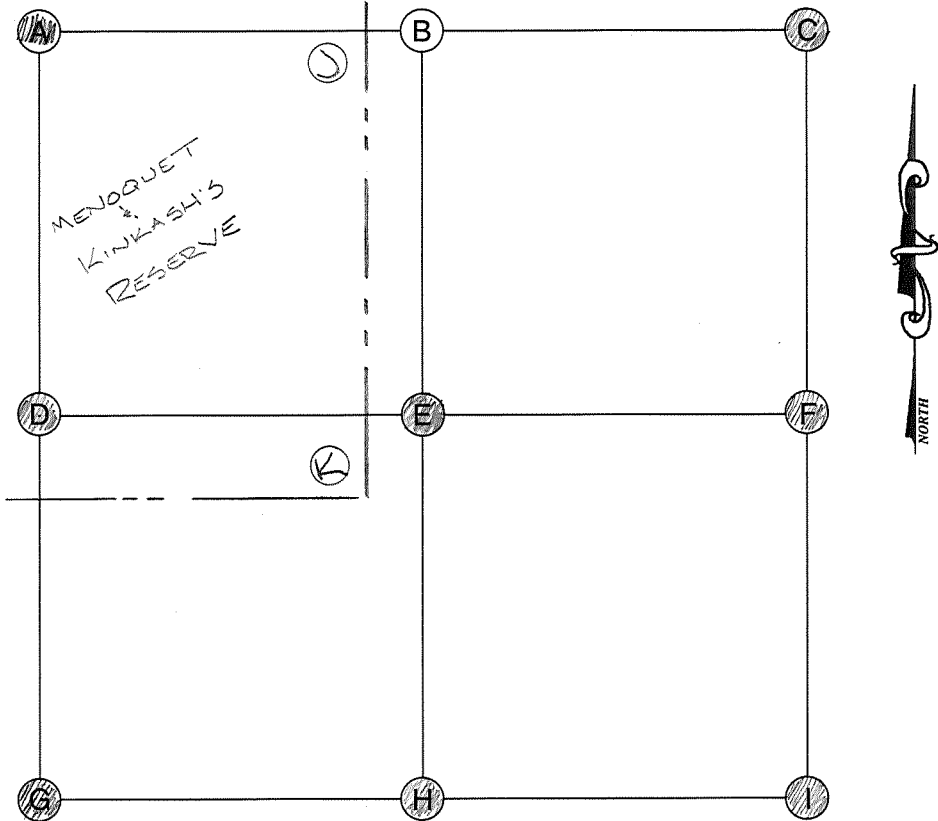
I (SOUTHEAST CORNER)

Date Located: 9/19/16
By: SRM
Monument Description: SET 4" GIN SPINDLE
Monument Witnesses: SEE Pg 526 "A"

Field Book: 4 Page: 71
STATE PLANE COORDINATES PHASE I 12/2017

ADDITIONAL NOTES

Plain
33-33-6



A (NORTHWEST CORNER)

Date Located: 2/16/16
By: DEM
Monument Description: RR SPIKE FLUSH
Monument Witnesses: SEE Pg 269 "G"

Field Book: 3 Page: 36
STATE PLANE COORDINATES PHASE II 2/2018

B (NORTH QUARTER CORNER)

Date Located: _____
By: _____
Monument Description: _____
Monument Witnesses: _____

Field Book: _____ Page: _____

C (NORTHEAST CORNER)

Date Located: 6/4/18
By: DEM
Monument Description: MAG NAIL W/CO TAG
Monument Witnesses: SEE Pg 269 "I"

Field Book: 9 Page: 75
STATE PLANE COORDINATES PHASE III 2/2019

D (WEST QUARTER CORNER)

Date Located: 4/4/17
By: DEM
Monument Description: FO RR SPIKE 5" DEEP, MAG NAIL OVER
Monument Witnesses: 1/2" REBAR W/CAP NW 43.18'
NAIL IN TAG IN POWER POLE N 16.35'
NAIL IN TAG IN POWER POLE S 41.68'

Field Book: 6 Page: 53
STATE PLANE COORDINATES PHASE II 2/2018

E (CENTER OF SECTION)

Date Located: 9/11/19
By: DEM MWH
Monument Description: FO "WALKER" MAG NAIL W/TAG
Monument Witnesses: 1/2" REBAR W/CAP NW 25.52'
1/2" REBAR W/CAP NE 26.86'
1/2" REBAR W/CAP SE 26.28'

Field Book: 17 Page: 20

F (EAST QUARTER CORNER)

Date Located: 5/16/18
By: DEM x MH
Monument Description: RR SPIKE 5 1/2" DEEP
Monument Witnesses: NAIL IN B. CAP NIPSCO POLE NW 41.83'
NAIL IN B. CAP NIPSCO POLE NE 28.02'
1/2" REBAR W/CAP SE 25.02'

Field Book: 9 Page: 69
STATE PLANE COORDINATES PHASE III 2/2019

G (SOUTHWEST CORNER)

Date Located: 9/19/16
By: DEM
Monument Description: SET 4" GIN SPINDLE
Monument Witnesses: SEE Pg 526, "A"

Field Book: 4 Page: 71
STATE PLANE COORDINATES PHASE I 12/2017

H (SOUTH QUARTER CORNER)

Date Located: 8/28/19
By: DEM MWH
Monument Description: FO MAG NAIL NO TAG
Monument Witnesses: "WALKER" CAPPED IRON N 20.0'
FO MAG NAIL NO TAG E 37.67'
1/2" REBAR W/CAP SW 21.41'

Field Book: 17 Page: 8

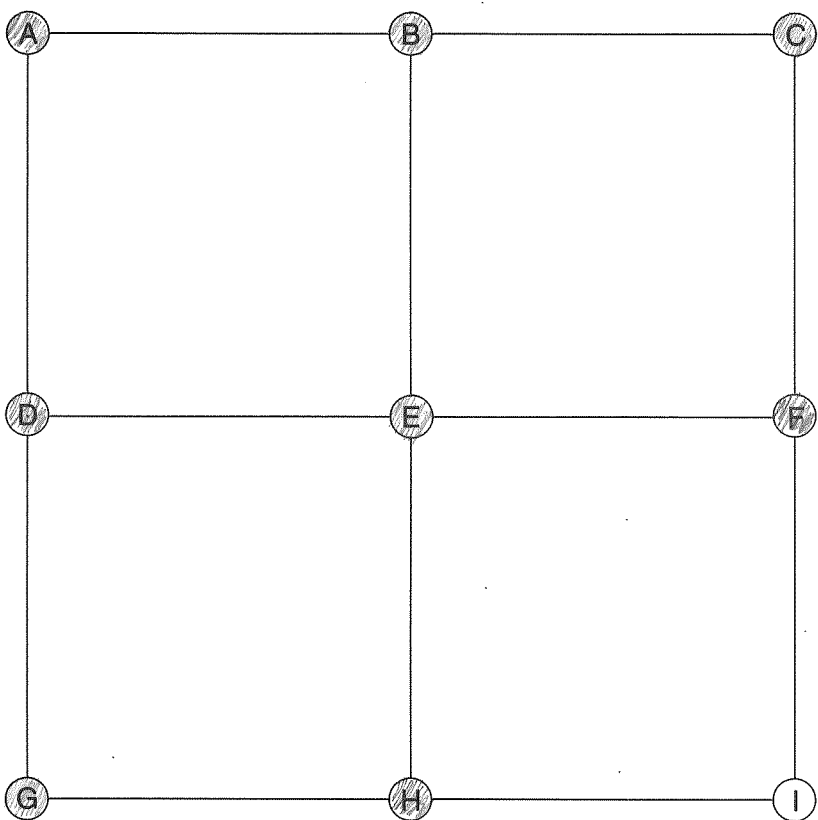
I (SOUTHEAST CORNER)

Date Located: 5/16/18
By: DEM x MH
Monument Description: FO MAG NAIL NO TAG
Monument Witnesses: NAIL IN B. CAP NIPSCO POLE WNW 68.08'
4" SO STEEL FCP NW 33.78'
MAG NAIL W/CO TAG E 36.42'
NAIL IN B. CAP NIPSCO POLE SW 27.97'

Field Book: 9 Page: 67
STATE PLANE COORDINATES PHASE III 2/2019

ADDITIONAL NOTES

"J" 8/28/19 DEM MWH. FO RR SPIKE
FIELD BOOK 17 Pg 7



E (CENTER OF SECTION)

Date Located: 10/15/20
By: SEM MWH
Monument Description: RR RAIL FCP
Monument Witnesses: _____

Field Book: 19 Page: 57

F (EAST QUARTER CORNER)

Date Located: 10/15/20
By: SEM MWH
Monument Description: 2 1/2" x 4" I-Beam FCP
Monument Witnesses: _____

Field Book: 19 Page: 56

A (NORTHWEST CORNER)

Date Located: 6/4/18
By: SRM
Monument Description: MAG NAIL w/ CO TAG
Monument Witnesses: SCE Pg 269 "I"

Field Book: 9 Page: 75
STATE PLANE COORDINATES PLASE III 2/2019

G (SOUTHWEST CORNER)

Date Located: 5/10/18
By: JEM
Monument Description: MAG NAIL
Monument Witnesses: SEE Pg 274 "I"

Field Book: 9 Page: 67
STATE PLANE COORDINATES PHASE III 2/2019

B (NORTH QUARTER CORNER)

Date Located: 6/9/17
By: SEM
Monument Description: F0 1/2" BOLT
Monument Witnesses: SEE Pg 268 "H"

Field Book: 7 Page: 18
STATE PLANE COORDINATES PLASE II 2/2018

H (SOUTH QUARTER CORNER)

Date Located: 5/2/18
By: JEM
Monument Description: MAG NAIL w/CO TAG
Monument Witnesses: ERR RAIL FCP N 24.02'
NAIL IN B. CAP IN POWER POLE NE 26.67'
MAG NAIL w/CO TAG E 69.94'
1/2" REBAR w/CAP SE 43.00'

Field Book: 9 Page: 55

C (NORTHEAST CORNER)

Date Located: 11/18/19
By: DEAN MUEL
Monument Description: FO 1/2" REBAR NO CAP
Monument Witnesses: _____

Field Book: 18 Page: 17

I (SOUTHEAST CORNER)

Date Located: _____
By: _____
Monument Description: _____
Monument Witnesses: _____

Field Book: _____ Page: _____

D (WEST QUARTER CORNER)

Date Located: 5/16/18
By: JEM
Monument Description: R/R SPIKE 5 1/2" DEEP
Monument Witnesses: NAIL IN B. CAP NIPSCO POLE NW 41.83'
NAIL IN B. CAP NIPSCO POLE NE 28.02'
1/2" REBAR W/CAP SE 25.02'

Field Book: 9 Page: 69
STATE PLANE COORDINATES PHASE III 2/2019

ADDITIONAL NOTES



Field Book: _____ Page: _____

Field Book: 7 Page: 74Field Book: 18 Page: 17

Field Book: _____ Page: _____

Field Book: _____ Page: _____

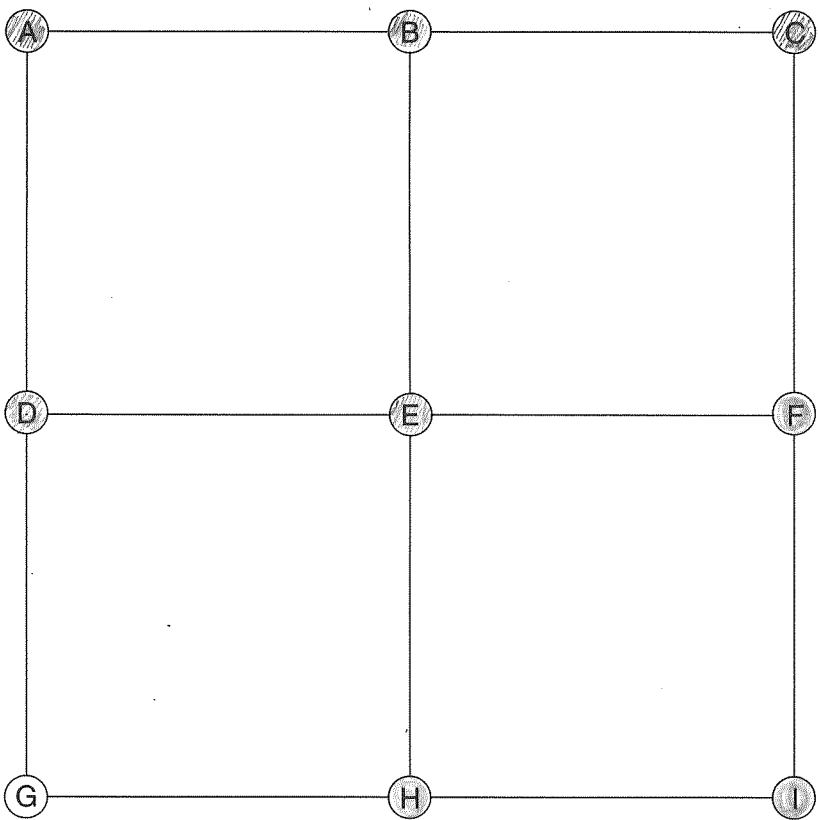
Field Book: _____ Page: _____

Field Book: 19 Page: 58

Field Book: _____ Page: _____

Field Book: 19 Page: 56

[illegible]



E (CENTER OF SECTION)

Date Located: 10/22/20
By: SRM MWH
Monument Description: RR RAIL FCP
Monument Witnesses: _____

Field Book: 19 Page: 59

F (EAST QUARTER CORNER)

Date Located: 7/13/90
By: JR MOYER
Monument Description: RR SPIKE
Monument Witnesses: CENTER OF RR RAIL FCP E 20.49
" " " " " W 20.43
SET 1/2" REBAR W/ WITNESS CAP NW 31.38

Field Book: 1 Page: 16

A (NORTHWEST CORNER)

Date Located: 10/15/20
By: SRM MWH
Monument Description: SET MAG NAIL IN TREE ROOT
Monument Witnesses: SEE Pg 267 "I"

Field Book: 19 Page: 58

G (SOUTHWEST CORNER)

Date Located: _____
By: _____
Monument Description: _____
Monument Witnesses: _____

Field Book: _____ Page: _____

B (NORTH QUARTER CORNER)

Date Located: 3/28/16
By: SRM
Monument Description: RR SPIKE 3" DEEP
Monument Witnesses: SEE Pg 266 "H"

Field Book: 3 Page: 41

STATE PLANE COORDINATES PHASE III 2/2019

H (SOUTH QUARTER CORNER)

Date Located: 7/13/90 9/13/05 RR MK 7/14/16 SRM
By: JR MOYER 7/14/16 SET HARRISON MON OVER STONE
Monument Description: REBAR OVER LARGE STONE
Monument Witnesses: SET 4" IN W. FACE OF RR RAIL FCP N 19.85
SET 1/2" X 30" REBAR W/ WITNESS CAP S 20.13
1/2" OF RR RAIL FCP ESE 48.71
9/13/05 REBAR REMOVED - HARRISON TO BE SET

Field Book: 1 Page: 16 UPDATED 7/14/16

4 32
STATE PLANE COORDINATES PHASE III 2/2019

C (NORTHEAST CORNER)

Date Located: 10/25/16
By: SRM
Monument Description: FO RR SPIKE
Monument Witnesses: SEE Pg 402 "G"

Field Book: 5 Page: 18

I (SOUTHEAST CORNER)

Date Located: 7/13/90
By: JR MOYER
Monument Description: RR SPIKE
Monument Witnesses: SET 4" CUT IN E FACE OF RR RAIL FCP NW 24.70
SET NAIL IN BOTTLE CAP IN W. FACE OF NIPSCO PP NNE 67.95
SET 4" CUT IN W. FACE OF RR RAIL FCP NE 43.50
SET 4" CUT IN N. FACE OF RR RAIL FCP SE 44.65
1/2" REBAR W/ CAP SW 29.20'

Field Book: 1 Page: 15 UPDATED 11/14/17 SRM

STATE PLANE COORDINATES PHASE II 2/2018

D (WEST QUARTER CORNER)

Date Located: 9/29/17
By: SRM
Monument Description: FO RR SPIKE 4" DEEP
Monument Witnesses: SEE Pg 276 "F"

Field Book: 7 Page: 74

STATE PLANE COORDINATES PHASE II 2/2018

ADDITIONAL NOTES