

E (CENTER OF SECTION)

Date Located: 6/25/20  
By: SRM MW4  
Monument Description: FD RR SPIKE 2" DEEP  
Monument Witnesses: MAG NAIL NIPSCO POLE N 16.15'  
NAIL IN B. CAP NIPSCO POLE SE 71.60'  
NAIL IN B. CAP WOOD FENCE POST SW 46.38'

Field Book: 18 Page: 74

F (EAST QUARTER CORNER)

Date Located: 6/21/17  
By: SRM  
Monument Description: BRONZE MARKER  
Monument Witnesses: SEE Pg 168 "O"

Field Book: 7 Page: 24

G (SOUTHWEST CORNER)

Date Located: \_\_\_\_\_  
By: \_\_\_\_\_  
Monument Description: \_\_\_\_\_  
Monument Witnesses: \_\_\_\_\_

Field Book: \_\_\_\_\_ Page: \_\_\_\_\_

H (SOUTH QUARTER CORNER)

Date Located: 5/23/19  
By: SRM MW4  
Monument Description: 1/2" REBAR  
Monument Witnesses: 2" DIA STEEL FCP W 20.3'  
FACE RR RAIL FCP E 18.25'  
NAIL IN B. CAP POWER POLE SSW 95.20'

Field Book: 14 Page: 40

I (SOUTHEAST CORNER)

Date Located: \_\_\_\_\_  
By: \_\_\_\_\_  
Monument Description: \_\_\_\_\_  
Monument Witnesses: \_\_\_\_\_

Field Book: \_\_\_\_\_ Page: \_\_\_\_\_

ADDITIONAL NOTES

\_\_\_\_\_  
\_\_\_\_\_  
\_\_\_\_\_  
\_\_\_\_\_  
\_\_\_\_\_  
\_\_\_\_\_  
\_\_\_\_\_  
\_\_\_\_\_  
\_\_\_\_\_  
\_\_\_\_\_

A (NORTHWEST CORNER)

Date Located: \_\_\_\_\_  
By: \_\_\_\_\_  
Monument Description: \_\_\_\_\_  
Monument Witnesses: \_\_\_\_\_

Field Book: \_\_\_\_\_ Page: \_\_\_\_\_

B (NORTH QUARTER CORNER)

Date Located: \_\_\_\_\_  
By: \_\_\_\_\_  
Monument Description: \_\_\_\_\_  
Monument Witnesses: \_\_\_\_\_

Field Book: \_\_\_\_\_ Page: \_\_\_\_\_

C (NORTHEAST CORNER)

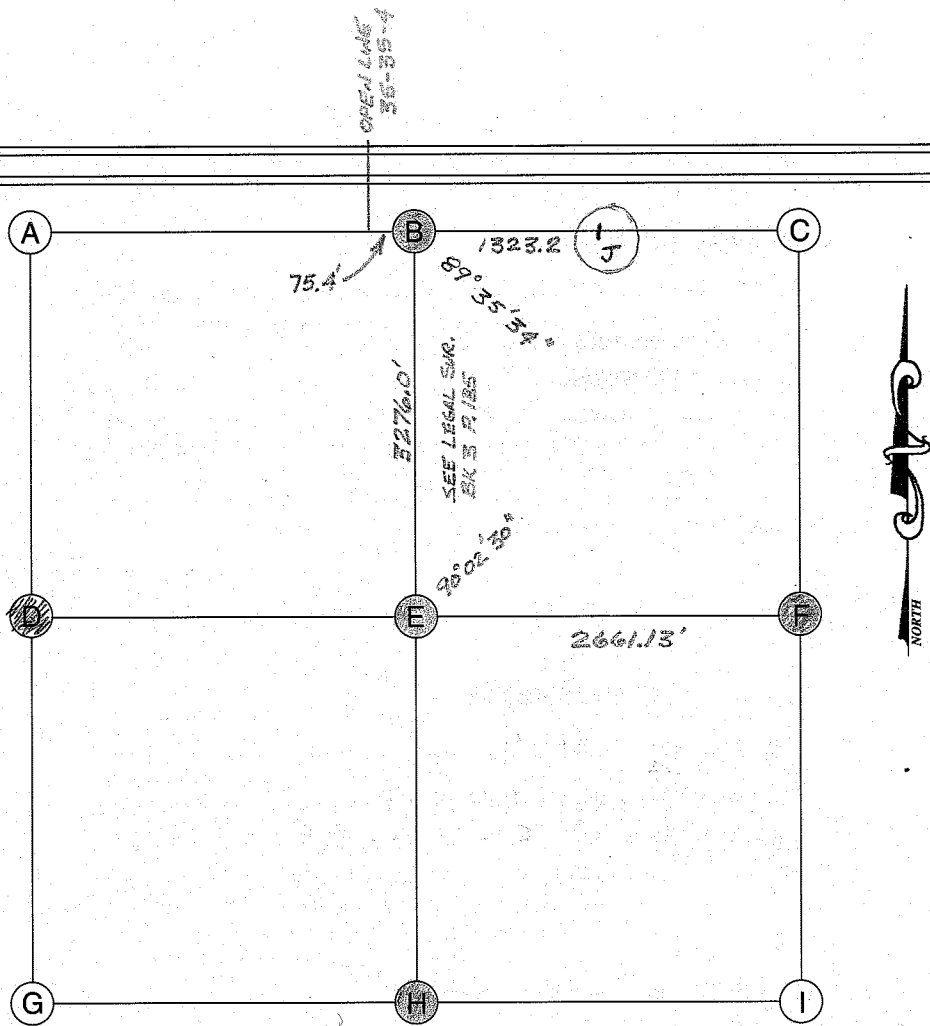
Date Located: 6/21/17  
By: SRM  
Monument Description: HARRISON MONUMENT  
Monument Witnesses: SEE Pg 168 "A"

Field Book: 7 Page: 25

D (WEST QUARTER CORNER)

Date Located: 5/23/19  
By: SRM MW4  
Monument Description: RR SPIKE  
Monument Witnesses: SEE Pg 315 "F"

Field Book: 14 Page: 39



E (CENTER OF SECTION)

Date Located: 6/12/91 5/23/19  
By: JR MOYER - EC HAINES SEM MWH  
Monument Description: 1" I.P.  
Monument Witnesses: SET 4" CUT IN SW FACE OF RR RAIL FCP NE 29.40  
SET CUT IN NW CORNER OF RR RAIL FCP SE 28.63  
" " " NE " " " " " SW 29.64

Field Book: 1 Page: 20  
14 Pg 37

F (EAST QUARTER CORNER)

Date Located: 5/23/19  
By: SEM MWH  
Monument Description: RAILROAD SPIKE  
Monument Witnesses: NAIL IN B CAP NIPSCO POLE NW 42.14'  
& RR RAIL FCP N 21.6'  
NAIL IN B. CAP POWER POLE SW 46.05'

Field Book: 14 Page: 39

A (NORTHWEST CORNER)

Date Located: \_\_\_\_\_  
By: \_\_\_\_\_  
Monument Description: \_\_\_\_\_  
Monument Witnesses: \_\_\_\_\_  
\_\_\_\_\_  
\_\_\_\_\_

Field Book: \_\_\_\_\_ Page: \_\_\_\_\_

G (SOUTHWEST CORNER)

Date Located: \_\_\_\_\_  
By: \_\_\_\_\_  
Monument Description: \_\_\_\_\_  
Monument Witnesses: \_\_\_\_\_  
\_\_\_\_\_  
\_\_\_\_\_

Field Book: \_\_\_\_\_ Page: \_\_\_\_\_

B (NORTH QUARTER CORNER)

Date Located: 3/9/2001 5/23/19  
By: ML KISSINGER SEM MWH  
Monument Description: 6" ARBORVITAE @ CORNER  
Monument Witnesses: 1/2" CAPPED IRON REBAR 37.7' SE  
1/2" CAPPED IRON REBAR (8'E. OF PINE EDGE) 42.1' NW  
1" IRON PIPE (3/4 POST 35-35-4) 75.4' W  
1" IRON PIPE (3/4 POST 35-35-4) 75.4' W  
NAIL IN NE FACE 24" DOUBLE TRUNKED TREE  
(0.5' ABOVE GROUND) 79.35' SW

Field Book: 14 Page: 38

H (SOUTH QUARTER CORNER)

Date Located: 6/12/91  
By: \_\_\_\_\_  
Monument Description: SEE PAGE 31B "B"  
Monument Witnesses: N 1/4 POST 11-34-4  
\_\_\_\_\_  
\_\_\_\_\_

Field Book: 1 Page: 21

C (NORTHEAST CORNER)

Date Located: \_\_\_\_\_  
By: \_\_\_\_\_  
Monument Description: \_\_\_\_\_  
Monument Witnesses: \_\_\_\_\_  
\_\_\_\_\_  
\_\_\_\_\_

Field Book: \_\_\_\_\_ Page: \_\_\_\_\_

I (SOUTHEAST CORNER)

Date Located: \_\_\_\_\_  
By: \_\_\_\_\_  
Monument Description: \_\_\_\_\_  
Monument Witnesses: \_\_\_\_\_  
\_\_\_\_\_  
\_\_\_\_\_

Field Book: \_\_\_\_\_ Page: \_\_\_\_\_

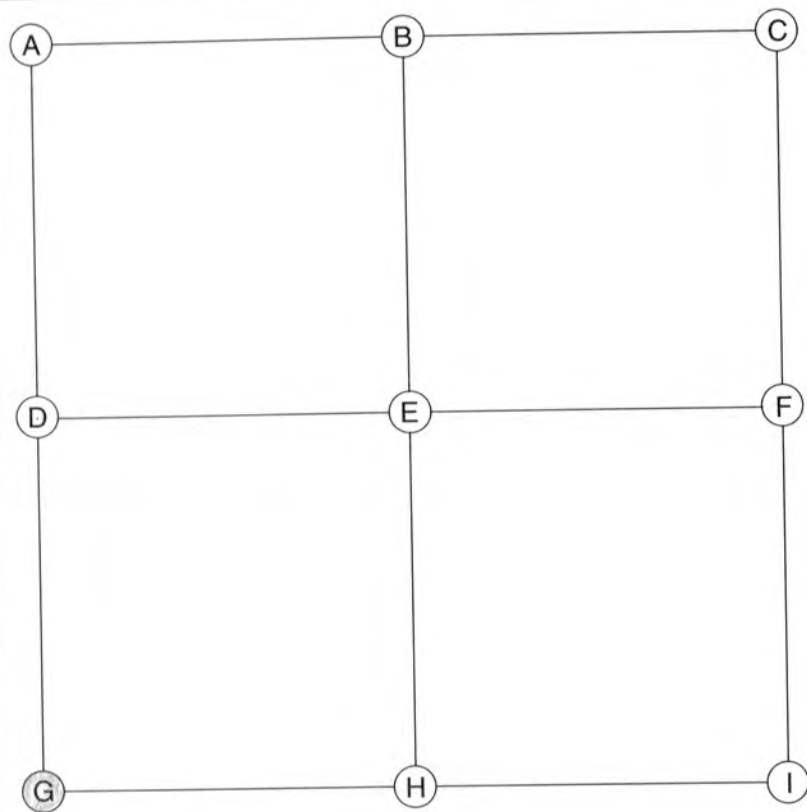
D (WEST QUARTER CORNER)

Date Located: 8/20/12  
By: SEM  
Monument Description: FO 1" IRON PIPE  
Monument Witnesses: SEE Pg 316 "F"  
\_\_\_\_\_  
\_\_\_\_\_

Field Book: 10 Page: 73

ADDITIONAL NOTES

J: POINT OF STONE (0.3' ABOVE GRADE)  
= 15' SOUTH OF EXISTING E-W FENCE  
= 1/2" CAPPED IRON REBAR 23.15' SE  
23.0' NE  
23.0' NW  
23.0' SOUTH  
SEE LEGAL SURVEY BK 3 P.185



## A (NORTHWEST CORNER)

Date Located: \_\_\_\_\_  
 By: \_\_\_\_\_  
 Monument Description: \_\_\_\_\_  
 Monument Witnesses: \_\_\_\_\_

Field Book: \_\_\_\_\_ Page: \_\_\_\_\_

## B (NORTH QUARTER CORNER)

Date Located: \_\_\_\_\_  
 By: \_\_\_\_\_  
 Monument Description: \_\_\_\_\_  
 Monument Witnesses: \_\_\_\_\_

Field Book: \_\_\_\_\_ Page: \_\_\_\_\_

## C (NORTHEAST CORNER)

Date Located: \_\_\_\_\_  
 By: \_\_\_\_\_  
 Monument Description: \_\_\_\_\_  
 Monument Witnesses: \_\_\_\_\_

Field Book: \_\_\_\_\_ Page: \_\_\_\_\_

## D (WEST QUARTER CORNER)

Date Located: \_\_\_\_\_  
 By: \_\_\_\_\_  
 Monument Description: \_\_\_\_\_  
 Monument Witnesses: \_\_\_\_\_

Field Book: \_\_\_\_\_ Page: \_\_\_\_\_

## E (CENTER OF SECTION)

Date Located: \_\_\_\_\_  
 By: \_\_\_\_\_  
 Monument Description: \_\_\_\_\_  
 Monument Witnesses: \_\_\_\_\_

Field Book: \_\_\_\_\_ Page: \_\_\_\_\_

## F (EAST QUARTER CORNER)

Date Located: \_\_\_\_\_  
 By: \_\_\_\_\_  
 Monument Description: \_\_\_\_\_  
 Monument Witnesses: \_\_\_\_\_

Field Book: \_\_\_\_\_ Page: \_\_\_\_\_

## G (SOUTHWEST CORNER)

Date Located: 8/17/92  
 By: \_\_\_\_\_  
 Monument Description: SEE PAGE 317 (A)  
 Monument Witnesses: NW COR. 10-34-4

Field Book: 2 Page: 51

## H (SOUTH QUARTER CORNER)

Date Located: \_\_\_\_\_  
 By: \_\_\_\_\_  
 Monument Description: \_\_\_\_\_  
 Monument Witnesses: \_\_\_\_\_

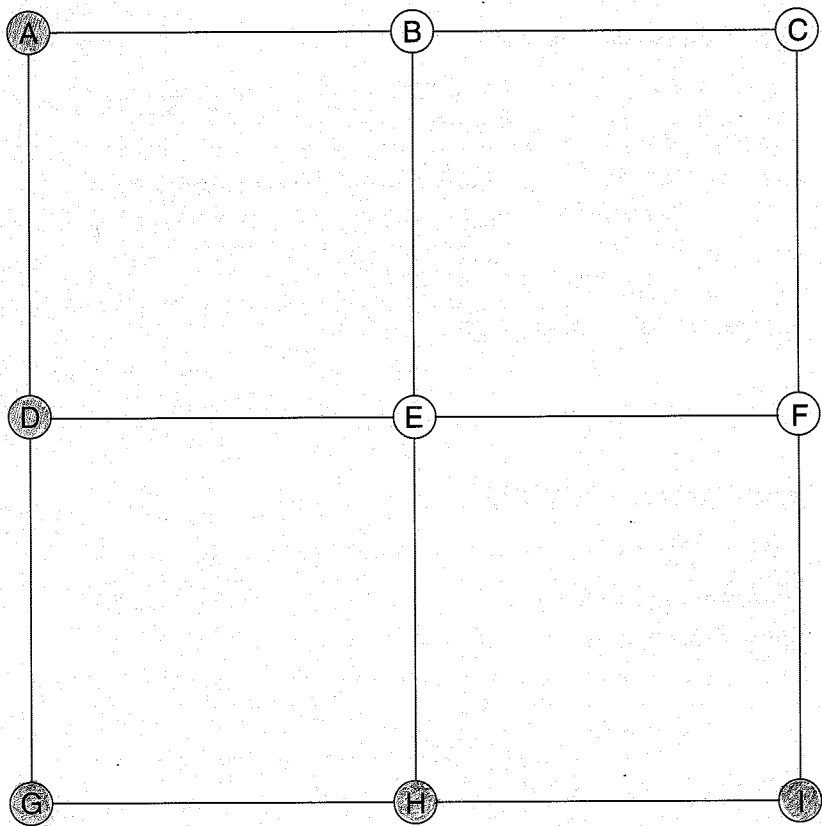
Field Book: \_\_\_\_\_ Page: \_\_\_\_\_

## I (SOUTHEAST CORNER)

Date Located: \_\_\_\_\_  
 By: \_\_\_\_\_  
 Monument Description: \_\_\_\_\_  
 Monument Witnesses: \_\_\_\_\_

Field Book: \_\_\_\_\_ Page: \_\_\_\_\_

## ADDITIONAL NOTES



E (CENTER OF SECTION)

Date Located: \_\_\_\_\_  
By: \_\_\_\_\_  
Monument Description: \_\_\_\_\_  
Monument Witnesses: \_\_\_\_\_  
\_\_\_\_\_

Field Book: \_\_\_\_\_ Page: \_\_\_\_\_

F (EAST QUARTER CORNER)

Date Located: \_\_\_\_\_  
By: \_\_\_\_\_  
Monument Description: \_\_\_\_\_  
Monument Witnesses: \_\_\_\_\_  
\_\_\_\_\_

Field Book: \_\_\_\_\_ Page: \_\_\_\_\_

G (SOUTHWEST CORNER)

Date Located: \_\_\_\_\_  
By: \_\_\_\_\_  
Monument Description: \_\_\_\_\_  
Monument Witnesses: SEE PAGE 322 "A"  
NW COR. 15-34-4  
\_\_\_\_\_

Field Book: \_\_\_\_\_ Page: \_\_\_\_\_

A (NORTHWEST CORNER)

Date Located: 8/17/92  
By: JR MOYER - ECHAINES  
Monument Description: HARRISON MONUMENT  
Monument Witnesses: \_\_\_\_\_  
FO PENAIL IN W. FACE OF A NIPSCO PP ESE 25.20  
" " " " NE FACE OF 8" DIA FEN. POST SW 42.90  
" " " " " " OF NIPSCO PP WSW 79.46

Field Book: 2 Page: 51 UPDATED 8/20/18 SRM

B (NORTH QUARTER CORNER)

Date Located: \_\_\_\_\_  
By: \_\_\_\_\_  
Monument Description: \_\_\_\_\_  
Monument Witnesses: \_\_\_\_\_  
\_\_\_\_\_

Field Book: \_\_\_\_\_ Page: \_\_\_\_\_

H (SOUTH QUARTER CORNER)

Date Located: 5/23/19  
By: SRM MMH  
Monument Description: RR SPIKE  
Monument Witnesses: 1/2" REBAR w/CAP NW 26.48'  
NAIL IN B. CAP NIPSCO POLE SW 32.00'  
WOOD FCP S 22.4'  
\_\_\_\_\_

Field Book: 14 Page: 35

C (NORTHEAST CORNER)

Date Located: \_\_\_\_\_  
By: \_\_\_\_\_  
Monument Description: \_\_\_\_\_  
Monument Witnesses: \_\_\_\_\_  
\_\_\_\_\_

Field Book: \_\_\_\_\_ Page: \_\_\_\_\_

I (SOUTHEAST CORNER)

Date Located: \_\_\_\_\_  
By: \_\_\_\_\_  
Monument Description: \_\_\_\_\_  
Monument Witnesses: SEE PAGE 322 "C"  
NE COR. 15-34-4  
\_\_\_\_\_

Field Book: \_\_\_\_\_ Page: \_\_\_\_\_

D (WEST QUARTER CORNER)

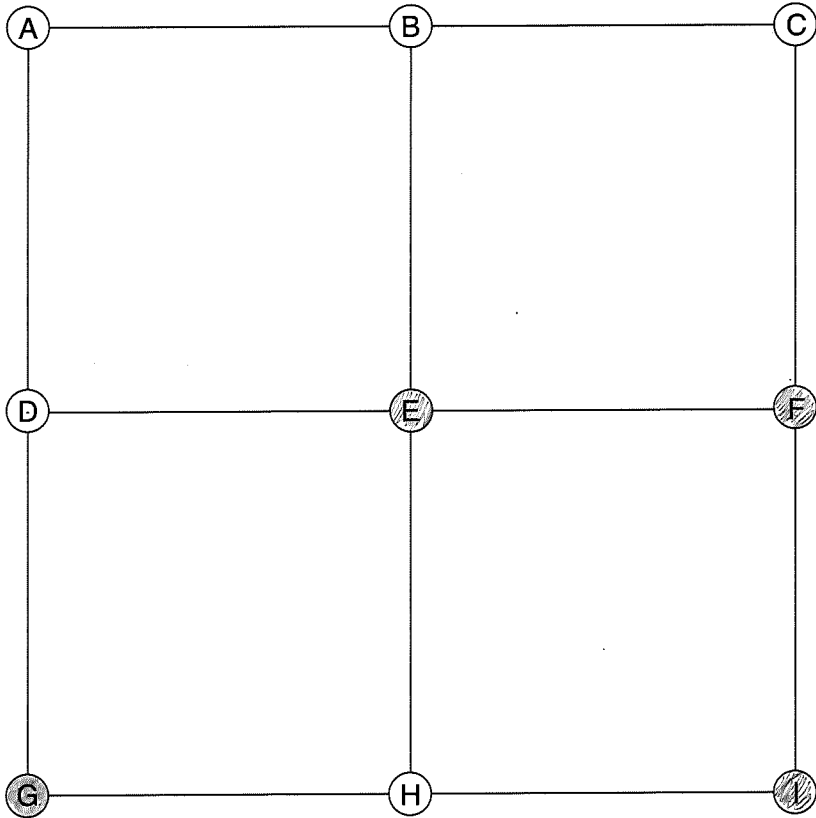
Date Located: 8/17/92  
By: JR MOYER - ECHAINES  
Monument Description: HARRISON MONUMENT  
Monument Witnesses: SE CORNER OF RR RAIL FCP NW 53.20  
FO SMALL PENAIL IN N. FACE OF NIPSCO POWER P. ESE 49.78  
SET NAIL IN BOTTLE CAP IN S. FACE OF NIPSCO PP WSW 94.04

USC&GS BM A170 1946 SE 50.16'  
Field Book: 2 Page: 51 UPDATED 8/20/18 SRM

ADDITIONAL NOTES



### ADDITIONAL NOTES



E (CENTER OF SECTION)

Date Located: 12/6/16  
By: SEM  
Monument Description: RR SPIKE FLUSH  
Monument Witnesses: NAIL IN B. CAP IN NIPSCO PP 693 WSW 18.23  
1/2" REBAR W/CAP NE 20.90'  
1/2" REBAR W/CAP SE 42.50'  
Field Book: 5 Page: 35

F (EAST QUARTER CORNER)

Date Located: 10/9/18  
By: SEM  
Monument Description: FO 3/4" IRON PIPE  
Monument Witnesses: 1/2" REBAR W/CAP ENE 25.61'  
NAIL IN B. CAP NIPSCO POLE ESE 25.90  
Field Book: 11 Page: 49

A (NORTHWEST CORNER)

Date Located: \_\_\_\_\_  
By: \_\_\_\_\_  
Monument Description: \_\_\_\_\_  
Monument Witnesses: \_\_\_\_\_  
Field Book: \_\_\_\_\_ Page: \_\_\_\_\_

G (SOUTHWEST CORNER)

Date Located: \_\_\_\_\_  
By: \_\_\_\_\_  
Monument Description: \_\_\_\_\_  
Monument Witnesses: SEE PAGE 320 "A"  
NW COR. 13-34-4  
Field Book: \_\_\_\_\_ Page: \_\_\_\_\_

B (NORTH QUARTER CORNER)

Date Located: \_\_\_\_\_  
By: \_\_\_\_\_  
Monument Description: \_\_\_\_\_  
Monument Witnesses: \_\_\_\_\_  
Field Book: \_\_\_\_\_ Page: \_\_\_\_\_

H (SOUTH QUARTER CORNER)

Date Located: \_\_\_\_\_  
By: \_\_\_\_\_  
Monument Description: \_\_\_\_\_  
Monument Witnesses: \_\_\_\_\_  
Field Book: \_\_\_\_\_ Page: \_\_\_\_\_

C (NORTHEAST CORNER)

Date Located: \_\_\_\_\_  
By: \_\_\_\_\_  
Monument Description: \_\_\_\_\_  
Monument Witnesses: \_\_\_\_\_  
Field Book: \_\_\_\_\_ Page: \_\_\_\_\_

I (SOUTHEAST CORNER)

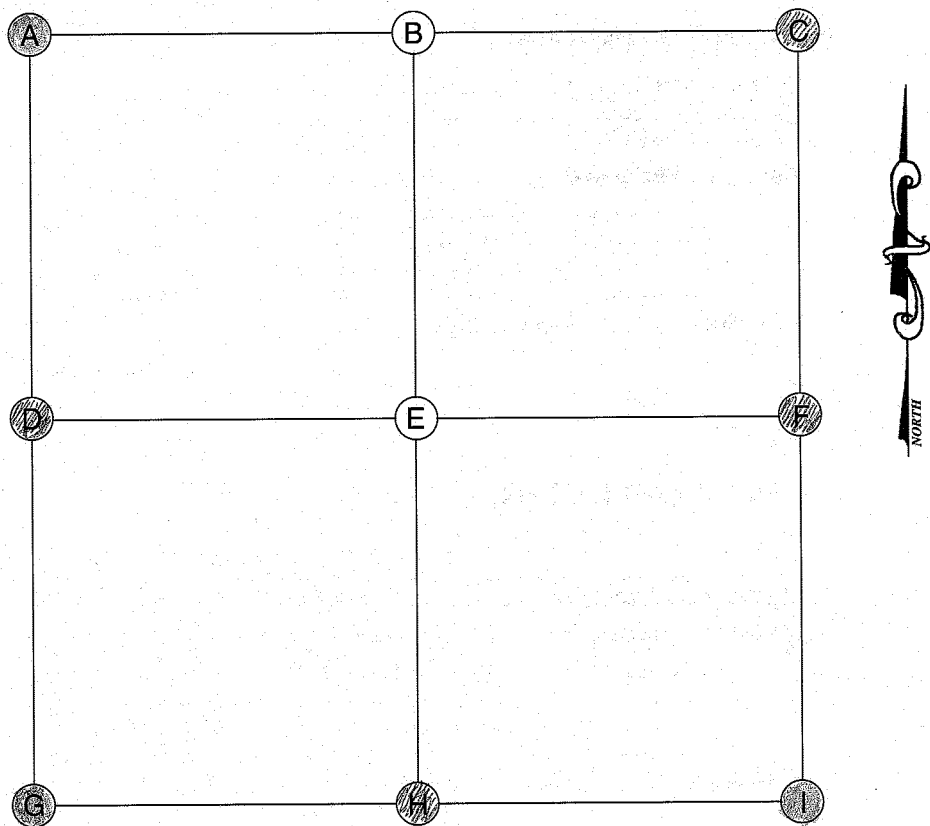
Date Located: 10/9/18  
By: SEM  
Monument Description: MAG NAIL  
Monument Witnesses: NAIL IN B. CAP TEL POLE NNW 91.27  
"MCCREA" CAPPED IRON E 25.04'  
NAIL IN B. CAP NIPSCO POLE SSW 31.90'  
USCAGS BM R17 SW 39.63'  
Field Book: 11 Page: 50

D (WEST QUARTER CORNER)

Date Located: \_\_\_\_\_  
By: \_\_\_\_\_  
Monument Description: \_\_\_\_\_  
Monument Witnesses: \_\_\_\_\_  
Field Book: \_\_\_\_\_ Page: \_\_\_\_\_

ADDITIONAL NOTES





Date Located: 6/13/06 5/23/19  
By: MR & JR SEM MWH  
Monument Description: 1. PIPE  
Monument Witnesses: 1/2" REBAR w/CAP 41.7' N-NW  
" " " 49.1' W-NW  
" " " 53.3' S-SW  
NEAREST EDGE OF RIP 28.39' SW

Field Book: 14 Page: 33

Date Located: \_\_\_\_\_  
By: \_\_\_\_\_  
Monument Description: \_\_\_\_\_  
Monument Witnesses: \_\_\_\_\_  
\_\_\_\_\_  
\_\_\_\_\_  
\_\_\_\_\_

Field Book: \_\_\_\_\_ Page: \_\_\_\_\_

Date Located: 10/9/18  
By: SEM  
Monument Description: MAG NAIL  
Monument Witnesses: SEE Pg 3A "I"

Field Book: 11 Page: 50

Date Located: 5/23/19  
By: SEM MWH  
Monument Description: 1/2" BOLT  
Monument Witnesses: 1/2" REBAR w/CAP NE 29.02'  
NAIL IN B. CAP POWER POLE SE 32.57'

Field Book: 14 Page: 32

Date Located: \_\_\_\_\_  
By: \_\_\_\_\_  
Monument Description: \_\_\_\_\_  
Monument Witnesses: \_\_\_\_\_  
\_\_\_\_\_  
\_\_\_\_\_  
\_\_\_\_\_

Field Book: \_\_\_\_\_ Page: \_\_\_\_\_

Date Located: 3/25/19  
By: SER  
Monument Description: MAG NAIL w/ CO TAG  
Monument Witnesses: SEE Pg 180 "D"

Field Book: 12 Page: 63

Date Located: \_\_\_\_\_  
By: \_\_\_\_\_  
Monument Description: \_\_\_\_\_  
Monument Witnesses: SEE PAGE 325 "A"  
NW COR. 29-34-1  
\_\_\_\_\_  
\_\_\_\_\_  
\_\_\_\_\_

Field Book: \_\_\_\_\_ Page: \_\_\_\_\_

Date Located: 5/22/19  
By: DEM MWH  
Monument Description: 1/2" x 24" REBAR w/ CO CAP  
Monument Witnesses: PK NAIL NIPSCO POLE N 17.90'  
1/2" x 24" REBAR w/ CAP NE 42.81'  
5/8" REBAR NO CAP S 19.90'

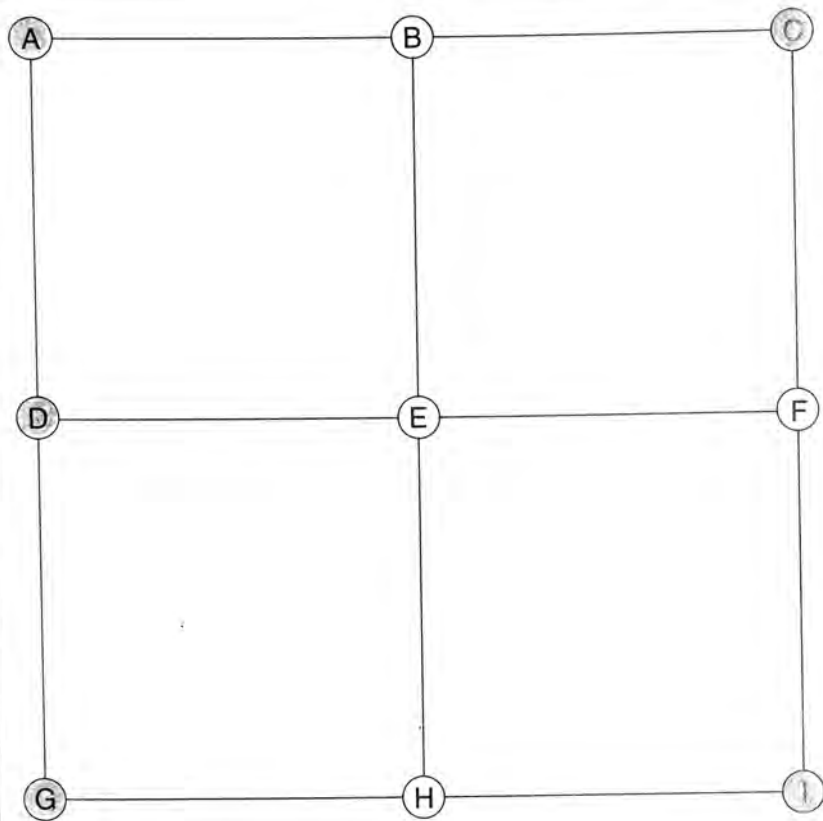
Field Book: 14 Page: 26

Date Located: \_\_\_\_\_  
By: \_\_\_\_\_  
Monument Description: \_\_\_\_\_  
Monument Witnesses: SEE PAGE 181 "A"  
NW COR 19-34-5  
\_\_\_\_\_  
\_\_\_\_\_

Field Book: \_\_\_\_\_ Page: \_\_\_\_\_

### ADDITIONAL NOTES

[illegible]



## E (CENTER OF SECTION)

Date Located: \_\_\_\_\_  
 By: \_\_\_\_\_  
 Monument Description: \_\_\_\_\_  
 Monument Witnesses: \_\_\_\_\_

Field Book: \_\_\_\_\_ Page: \_\_\_\_\_

## F (EAST QUARTER CORNER)

Date Located: \_\_\_\_\_  
 By: \_\_\_\_\_  
 Monument Description: \_\_\_\_\_  
 Monument Witnesses: \_\_\_\_\_

Field Book: \_\_\_\_\_ Page: \_\_\_\_\_

## G (SOUTHWEST CORNER)

Date Located: \_\_\_\_\_  
 By: \_\_\_\_\_  
 Monument Description: \_\_\_\_\_  
 Monument Witnesses: SEE PAGE 320 "A"  
NE COR. 15-34-4

Field Book: \_\_\_\_\_ Page: \_\_\_\_\_

## A (NORTHWEST CORNER)

Date Located: \_\_\_\_\_  
 By: \_\_\_\_\_  
 Monument Description: \_\_\_\_\_  
 Monument Witnesses: SEE PAGE 320 "A"  
NE COR. 15-34-4

Field Book: \_\_\_\_\_ Page: \_\_\_\_\_

## B (NORTH QUARTER CORNER)

Date Located: \_\_\_\_\_  
 By: \_\_\_\_\_  
 Monument Description: \_\_\_\_\_  
 Monument Witnesses: \_\_\_\_\_

Field Book: \_\_\_\_\_ Page: \_\_\_\_\_

## H (SOUTH QUARTER CORNER)

Date Located: \_\_\_\_\_  
 By: \_\_\_\_\_  
 Monument Description: \_\_\_\_\_  
 Monument Witnesses: \_\_\_\_\_

Field Book: \_\_\_\_\_ Page: \_\_\_\_\_

## C (NORTHEAST CORNER)

Date Located: \_\_\_\_\_  
 By: \_\_\_\_\_  
 Monument Description: \_\_\_\_\_  
 Monument Witnesses: SEE PAGE 320 "A"  
NW COR. 13-34-4

Field Book: \_\_\_\_\_ Page: \_\_\_\_\_

## I (SOUTHEAST CORNER)

Date Located: \_\_\_\_\_  
 By: \_\_\_\_\_  
 Monument Description: \_\_\_\_\_  
 Monument Witnesses: SEE PAGE 325 "A"  
NW COR. 24-34-4

Field Book: \_\_\_\_\_ Page: \_\_\_\_\_

## D (WEST QUARTER CORNER)

Date Located: \_\_\_\_\_  
 By: \_\_\_\_\_  
 Monument Description: \_\_\_\_\_  
 Monument Witnesses: SEE PAGE 320 "A"  
E 1/4 POST 15-34-4

Field Book: \_\_\_\_\_ Page: \_\_\_\_\_

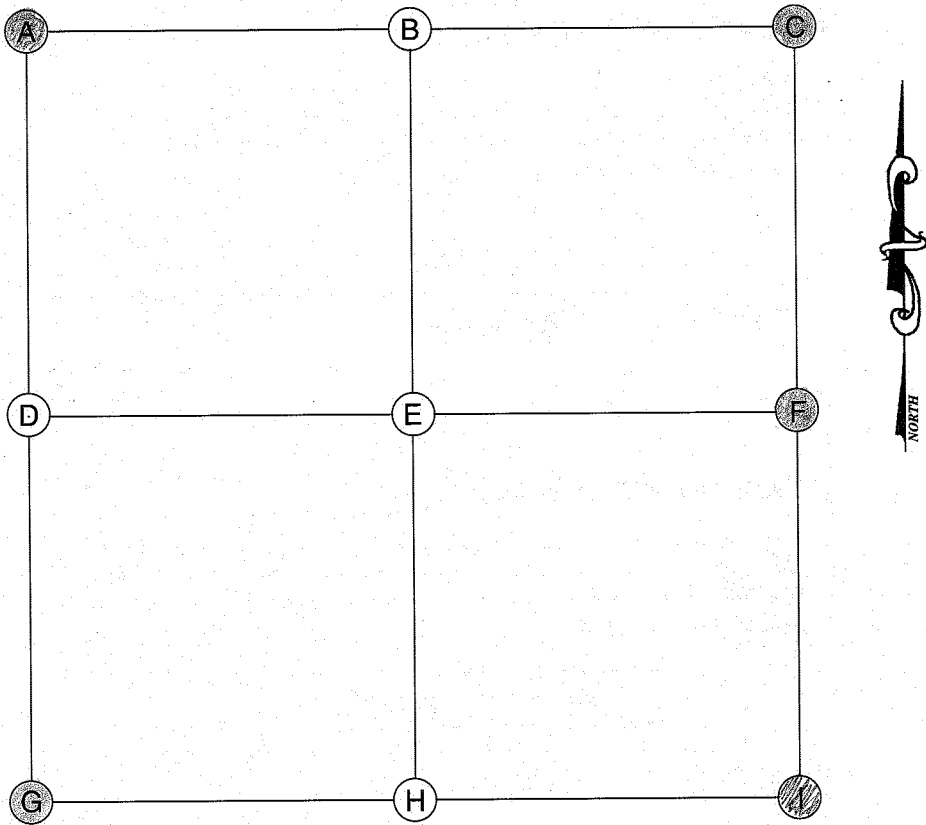
## ADDITIONAL NOTES







Scott  
23-34-4



A (NORTHWEST CORNER)

Date Located: \_\_\_\_\_  
By: \_\_\_\_\_  
Monument Description: \_\_\_\_\_  
Monument Witnesses: SEE PAGE 322 "I"  
SE COR. 15-34-4

Field Book: \_\_\_\_\_ Page: \_\_\_\_\_

B (NORTH QUARTER CORNER)

Date Located: \_\_\_\_\_  
By: \_\_\_\_\_  
Monument Description: \_\_\_\_\_  
Monument Witnesses: \_\_\_\_\_

Field Book: \_\_\_\_\_ Page: \_\_\_\_\_

C (NORTHEAST CORNER)

Date Located: \_\_\_\_\_  
By: \_\_\_\_\_  
Monument Description: \_\_\_\_\_  
Monument Witnesses: SEE PAGE 325 "A"  
NE COR. 24-34-4

Field Book: \_\_\_\_\_ Page: \_\_\_\_\_

D (WEST QUARTER CORNER)

Date Located: \_\_\_\_\_  
By: \_\_\_\_\_  
Monument Description: \_\_\_\_\_  
Monument Witnesses: \_\_\_\_\_

Field Book: \_\_\_\_\_ Page: \_\_\_\_\_

E (CENTER OF SECTION)

Date Located: \_\_\_\_\_  
By: \_\_\_\_\_  
Monument Description: \_\_\_\_\_  
Monument Witnesses: \_\_\_\_\_

Field Book: \_\_\_\_\_ Page: \_\_\_\_\_

F (EAST QUARTER CORNER)

Date Located: \_\_\_\_\_  
By: \_\_\_\_\_  
Monument Description: \_\_\_\_\_  
Monument Witnesses: SEE PAGE 325 "D"  
W 1/4 POST 24-34-4

Field Book: \_\_\_\_\_ Page: \_\_\_\_\_

G (SOUTHWEST CORNER)

Date Located: \_\_\_\_\_  
By: \_\_\_\_\_  
Monument Description: \_\_\_\_\_  
Monument Witnesses: SEE PAGE 328 "C"  
NE COR. 27-34-4

Field Book: \_\_\_\_\_ Page: \_\_\_\_\_

H (SOUTH QUARTER CORNER)

Date Located: \_\_\_\_\_  
By: \_\_\_\_\_  
Monument Description: \_\_\_\_\_  
Monument Witnesses: \_\_\_\_\_

Field Book: \_\_\_\_\_ Page: \_\_\_\_\_

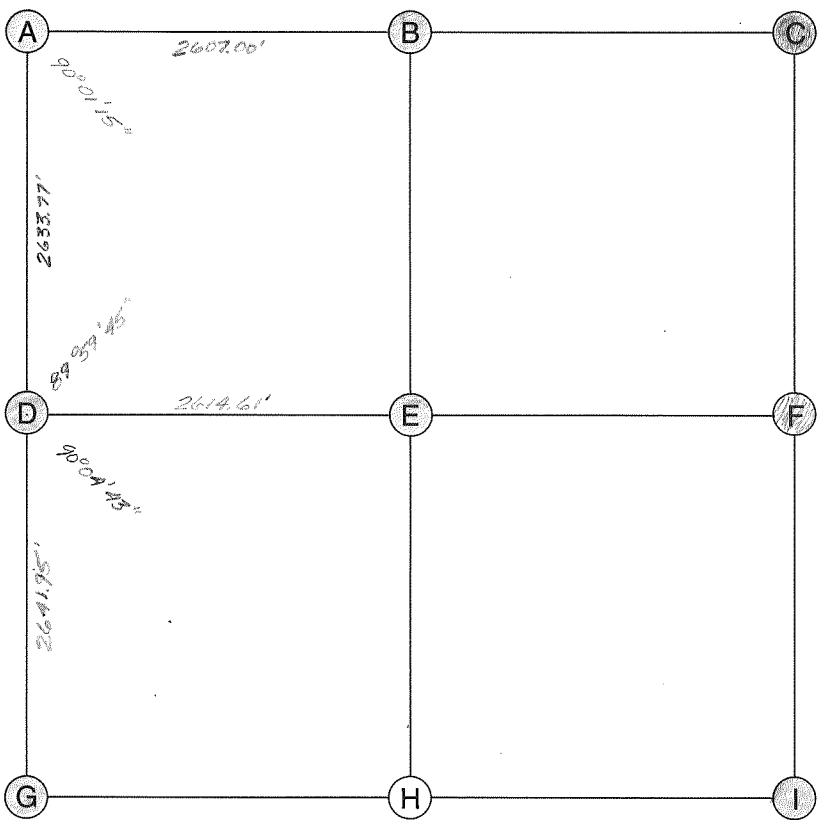
I (SOUTHEAST CORNER)

Date Located: 5/22/19  
By: JEM MWH  
Monument Description: FO RR SPIKE  
Monument Witnesses: 1/2" REBAR W/CAP NW 26.68'  
W FACE RR RAIL FCP E 23.05'  
1/2" REBAR W/CAP SW 25.13'

Field Book: 14 Page: 28

ADDITIONAL NOTES

\_\_\_\_\_  
\_\_\_\_\_  
\_\_\_\_\_  
\_\_\_\_\_  
\_\_\_\_\_  
\_\_\_\_\_  
\_\_\_\_\_  
\_\_\_\_\_  
\_\_\_\_\_  
\_\_\_\_\_



E (CENTER OF SECTION)

Date Located: 12-11-96 5/22/19  
By: M. KISSINGER SEM MWH  
Monument Description: PK NAIL REPLACED WITH MAG NAIL  
Monument Witnesses: NAIL IN B CAP LIGHT POLE NE 45.03'  
1/2" REBAR W/CAP SE 23.07'  
N FACE CONC FCP S 19 60'

Field Book: 14 Page: 27

F (EAST QUARTER CORNER)

Date Located: 6/17/20  
By: SEM MWH  
Monument Description: SET MAG NAIL  
Monument Witnesses: RE SPIKE W 262.00'  
NAIL IN B CAP NIPSCO P POLE WNW 68.91'  
NW CORNER RE RAIL FCP SE 28.2'  
1/2" REBAR W/CAP SW 33.28'

Field Book: 18 Page: 68

A (NORTHWEST CORNER)

Date Located: 12-11-06  
By: ZKEMPER, M. KISSINGER, M. MONTIEL  
Monument Description: BRONZE MARKER W/ PLATE  
Monument Witnesses: PK NAIL W. FACE NIPSCO 452 NW 42.95'  
S. EDGE RR IRON POST WNW 34.91'  
PK NAIL N FACE NIPSCO P POLE NE 55.44'  
FACE RR IRON POST SE 32.15'  
1/2" REBAR W/CAP SE 37.30'

Field Book: 3 Page: 2 UPDATED 1/24/18 SEM

G (SOUTHWEST CORNER)

Date Located: 12-11-96 5/22/19  
By: M. KISSINGER SEM MWH  
Monument Description: RAILROAD SPIKE  
Monument Witnesses: SEE Pg 324 "I"

Field Book: 14 Page: 28

B (NORTH QUARTER CORNER)

Date Located: 5/22/19  
By: SEM MWH  
Monument Description: 1/2" REBAR W/CAP  
Monument Witnesses: SEE Pg 320 "H"

Field Book: 14 Page: 26

H (SOUTH QUARTER CORNER)

Date Located: \_\_\_\_\_  
By: \_\_\_\_\_  
Monument Description: \_\_\_\_\_  
Monument Witnesses: \_\_\_\_\_

Field Book: \_\_\_\_\_ Page: \_\_\_\_\_

C (NORTHEAST CORNER)

Date Located: \_\_\_\_\_  
By: \_\_\_\_\_  
Monument Description: \_\_\_\_\_  
Monument Witnesses: SEE PAGE 181 "A"  
NW COR. 19-34-5

Field Book: \_\_\_\_\_ Page: \_\_\_\_\_

I (SOUTHEAST CORNER)

Date Located: 7/13/92  
By: J. B. MOYCA - ECHANGES  
Monument Description: BOAT SPIKE FO BRONZE MONUMENT 4/20/16  
Monument Witnesses: CENTER OF A USCGS BRONZE MON. ENE 37.64'  
FO PK NAIL IN SW FACE REA PHONE POLE NW 29.81'  
" " " " NW " " " POWER POLE NE 29.42'

Field Book: 1 Page: 78 UPDATED 4/20/16

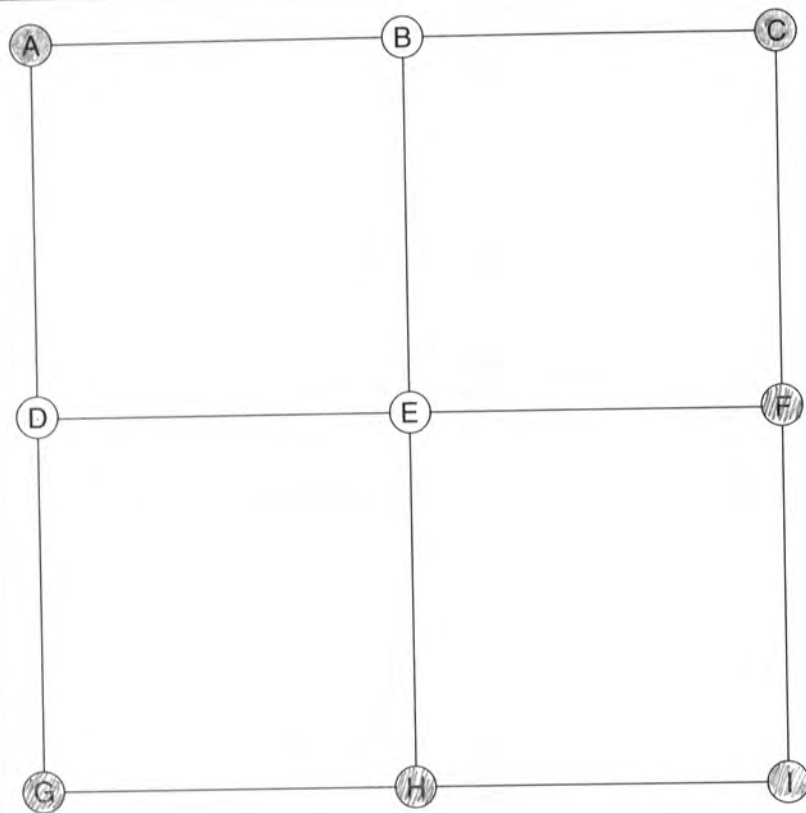
D (WEST QUARTER CORNER)

Date Located: 12-11-96 UPDATED 1/24/18 SEM  
By: ZKEMPER, M. KISSINGER  
Monument Description: 3/4" IRON PIPE IN ASPHALT  
Monument Witnesses: FREE RIF 27.57' NW  
FREE RIF 27.3' NE  
NAIL IN B CAP NIPSCO P POLE NW 29.43'  
1/2" REBAR W/CAP SE 39.65'  
1/2" REBAR W/CAP SW 41.70'

Field Book: 3 Page: 2

ADDITIONAL NOTES

Scott  
25-34-4



## A (NORTHWEST CORNER)

Date Located: \_\_\_\_\_  
By: \_\_\_\_\_  
Monument Description: \_\_\_\_\_  
Monument Witnesses: SEE PAGE 325 "G"  
SW COR. 24-34-4

Field Book: \_\_\_\_\_ Page: \_\_\_\_\_

## B (NORTH QUARTER CORNER)

Date Located: \_\_\_\_\_  
By: \_\_\_\_\_  
Monument Description: \_\_\_\_\_  
Monument Witnesses: \_\_\_\_\_

Field Book: \_\_\_\_\_ Page: \_\_\_\_\_

## C (NORTHEAST CORNER)

Date Located: \_\_\_\_\_  
By: \_\_\_\_\_  
Monument Description: \_\_\_\_\_  
Monument Witnesses: SEE PAGE 325 "I"  
SE COR. 24-34-4

Field Book: \_\_\_\_\_ Page: \_\_\_\_\_

## D (WEST QUARTER CORNER)

Date Located: \_\_\_\_\_  
By: \_\_\_\_\_  
Monument Description: \_\_\_\_\_  
Monument Witnesses: \_\_\_\_\_

Field Book: \_\_\_\_\_ Page: \_\_\_\_\_

## E (CENTER OF SECTION)

Date Located: \_\_\_\_\_  
By: \_\_\_\_\_  
Monument Description: \_\_\_\_\_  
Monument Witnesses: \_\_\_\_\_

Field Book: \_\_\_\_\_ Page: \_\_\_\_\_

## F (EAST QUARTER CORNER)

Date Located: 4/20/16  
By: SRM  
Monument Description: FO MAG NAIL 2" DEEP  
Monument Witnesses: FO 6" DIA 1 POST 26.30' NE  
& RR RAIL FCP 20.48' W  
SET 1/2" REBAR w/CAP 38.38' SE  
SET MAG NAIL IN P. POLE 62.6/025 26.60' NE

Field Book: 3 Page: 46

## G (SOUTHWEST CORNER)

Date Located: 4/22/16  
By: SRMAYER  
Monument Description: FO BRONZE MONUMENT FLUSH  
Monument Witnesses: MAG NAIL IN P. POLE 477/735 42.62' NW  
MAG NAIL IN P. POLE 691/244 32.00' SW  
& 2" DIA PIPE IN CONC FLUSH 27.30' NE

Field Book: 3 Page: 48

## H (SOUTH QUARTER CORNER)

Date Located: 4/22/16  
By: SRMAYER  
Monument Description: FO 5/8" IRON P.N. FLUSH  
Monument Witnesses: FACE OF RR RAIL FCP 20.15' N  
FACE OF 2" CHANNEL IRON FCP 20.20' S  
NAIL IN B/C IN P. POLE 691/233 35.94' ESE  
1/2" REBAR w/CAP BESIDE HOWAL 21.71' SW

Field Book: 3 Page: 47

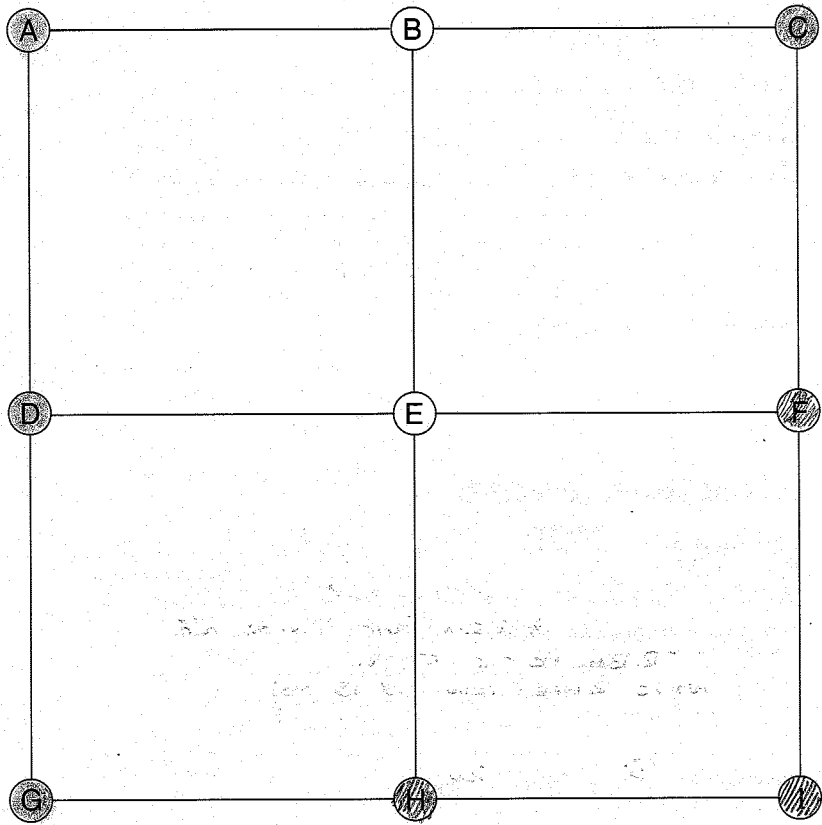
## I (SOUTHEAST CORNER)

Date Located: 4/8/16  
By: SRM  
Monument Description: FO BRONZE MARKER FLUSH  
Monument Witnesses: SW BOLT STATE STOP LIGHT POLE 65.60' NW  
1/2" REBAR w/CAP 39.40' SE  
1/2" REBAR w/CAP 38.50' SW  
NE COR PORCH AT STORE 62.08' SW

Field Book: 3 Page: 42

## ADDITIONAL NOTES





E (CENTER OF SECTION)

Date Located: \_\_\_\_\_  
By: \_\_\_\_\_  
Monument Description: \_\_\_\_\_  
Monument Witnesses: \_\_\_\_\_  
\_\_\_\_\_

Field Book: \_\_\_\_\_ Page: \_\_\_\_\_

F (EAST QUARTER CORNER)

Date Located: 5/22/19  
By: SEM MWH  
Monument Description: MAG NAIL W/ CO TAG  
Monument Witnesses: 5/8" REBAR NO CAP NW 54.03'  
NAIL W B. CAP NIPSCO POLE ESE 17.73'  
1/2" REBAR W/ CAP WNW 24.35'

Field Book: 14 Page: 29

G (SOUTHWEST CORNER)

Date Located: \_\_\_\_\_  
By: \_\_\_\_\_  
Monument Description: \_\_\_\_\_  
Monument Witnesses: SEE PAGE 328 "I"  
SE COR. 27-34-4

Field Book: \_\_\_\_\_ Page: \_\_\_\_\_

A (NORTHWEST CORNER)

Date Located: \_\_\_\_\_  
By: \_\_\_\_\_  
Monument Description: \_\_\_\_\_  
Monument Witnesses: SEE PAGE 328 "C"  
NE COR. 27-34-4

Field Book: \_\_\_\_\_ Page: \_\_\_\_\_

B (NORTH QUARTER CORNER)

Date Located: \_\_\_\_\_  
By: \_\_\_\_\_  
Monument Description: \_\_\_\_\_  
Monument Witnesses: \_\_\_\_\_

Field Book: \_\_\_\_\_ Page: \_\_\_\_\_

H (SOUTH QUARTER CORNER)

Date Located: 4/20/16  
By: SEM  
Monument Description: FO BOAT SPIKE 8" DEEP  
Monument Witnesses: RR RAIL FCP 21.15' N  
RR RAIL FCP 20.57' S  
MAG NAIL IN NIPSCO P. POLE 50.14' SE

Field Book: 3 Page: 49

C (NORTHEAST CORNER)

Date Located: 5/22/19  
By: SEM MWH  
Monument Description: RR SPIKE  
Monument Witnesses: SEE Pg 324 "I"

Field Book: 14 Page: 28

I (SOUTHEAST CORNER)

Date Located: 4/22/16  
By: SEM  
Monument Description: FO BRONZE MONUMENT FLUSH  
Monument Witnesses: SEE Pg 326 "G"

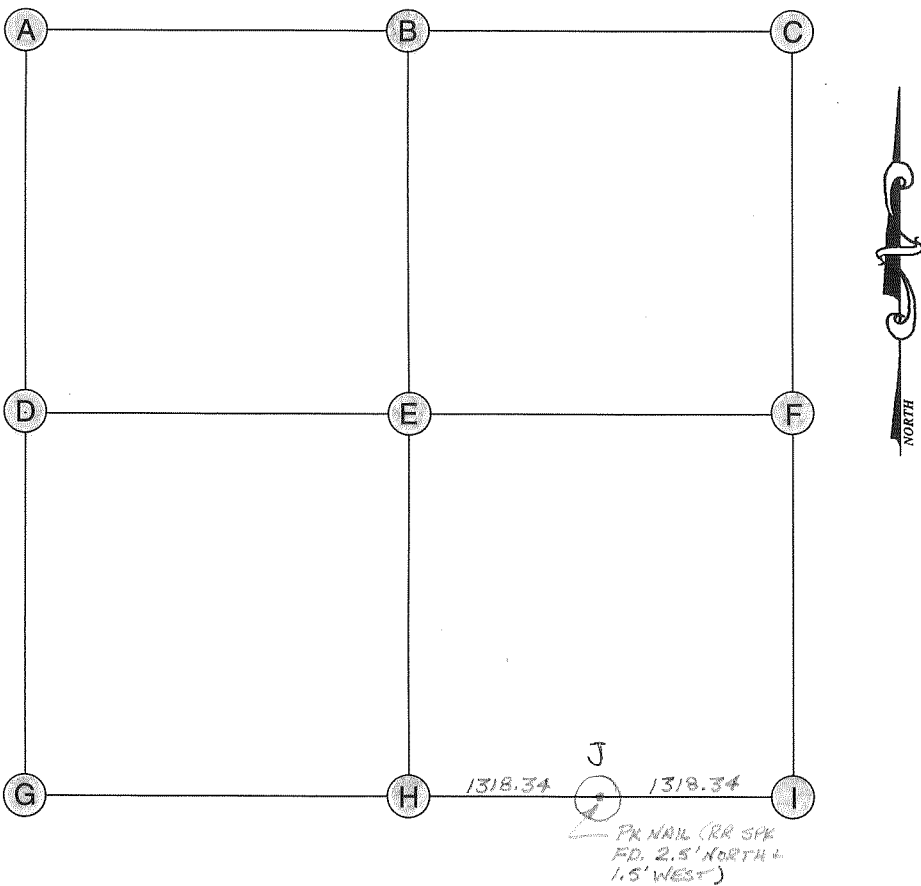
Field Book: 3 Page: 48

D (WEST QUARTER CORNER)

Date Located: \_\_\_\_\_  
By: \_\_\_\_\_  
Monument Description: \_\_\_\_\_  
Monument Witnesses: SEE PAGE 328 "F"  
E 1/4 POST 27-34-4

Field Book: \_\_\_\_\_ Page: \_\_\_\_\_

ADDITIONAL NOTES



A (NORTHWEST CORNER)

Date Located: 7/6/92  
By: JR MOYER - ECHAINES  
Monument Description: NO CORNER OR READING HARRISON MONUMENT 2/16  
Monument Witnesses: SEE UPDATE BELOW  
Field Book: 1 Page: 75 UPDATED 2/1/16 SRM

B (NORTH QUARTER CORNER)

Date Located: 6/97 5/31/17  
By: RTK + MEK SRM  
Monument Description: 1/2" IRON BAR  
Monument Witnesses: 1/2" RR RAIL FCP N 15.86'  
NAIL IN B. CAP IN POWER POLE NE 16.15'  
NAIL IN B. CAP IN POWER POLE SE 40.33'  
1/2" RR RAIL FCP S 13.1'  
Field Book: 7 Page: 16

C (NORTHEAST CORNER)

Date Located: 6/97 5/31/17  
By: RTK + MEK SRM  
Monument Description: 5/8" IRON BAR  
Monument Witnesses: NAIL IN B. CAP IN P. POLE WSW 66.40'  
1/2" RR RAIL FCP E 16.97'  
NAIL IN B. CAP IN POWER POLE ESE 16.86'  
NAIL IN B. CAP IN POWER POLE SSW 40.27'  
Field Book: 7 Page: 15

D (WEST QUARTER CORNER)

Date Located: 7/6/92  
By: JR MOYER - ECHAINES  
Monument Description: HARRISON MONUMENT  
Monument Witnesses: CENTER OF RR RAIL FCP W 25.15'  
SET 1/2" X 30" REBAR W/CAP SW 30.41'  
1/2" REBAR W/CAP SE 30.15'  
Field Book: 1 Page: 74 UPDATED 8/20/18 SRM

E (CENTER OF SECTION)

Date Located: 6/97  
By: RTK + MEK  
Monument Description: 5/8" IRON REBAR  
Monument Witnesses: WOOD POST 33' SOUTH + 3.4' WEST  
Field Book: \_\_\_\_\_ Page: \_\_\_\_\_

F (EAST QUARTER CORNER)

Date Located: 6/97 5/22/19  
By: RTK + MEK  
Monument Description: 1/2" IRON BAR  
Monument Witnesses: 1/2" REBAR W/CAP NW 27.65'  
1/2" REBAR NO CAP E 20.1'  
WALVEE CAPPED IRON W 16.45'  
Field Book: 14 Page: 30

G (SOUTHWEST CORNER)

Date Located: 7/1/92  
By: JR MOYER - ECHAINES  
Monument Description: 4" DIA. ALUMINUM DISK 3" DEEP  
STAMPED: SECTION CORNER  
Monument Witnesses: SET NAIL IN BOTTLE CAP IN NE FACE OF T. POLE 59.50' WNW  
SET " " W. FACE OF POWER POLE 45.04' SE  
Field Book: 1 Page: 71 UPDATED 8/20/18 SRM

H (SOUTH QUARTER CORNER)

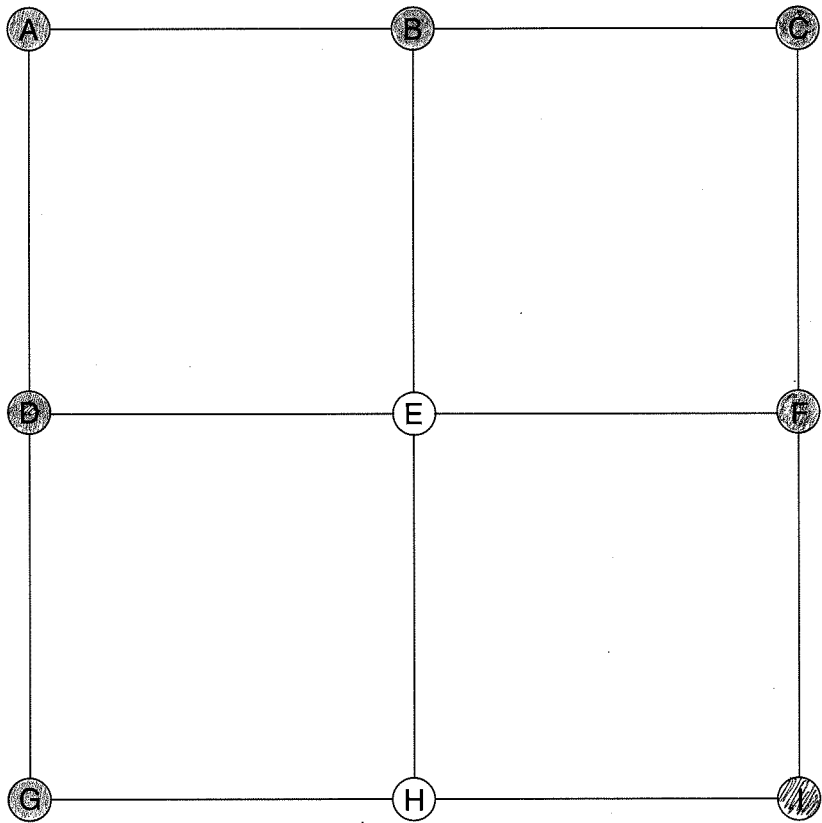
Date Located: 6/97 6/25/20  
By: RTK + MEK SRM MWH  
Monument Description: PK NAIL MAG NAIL  
Monument Witnesses: RR SPK 49' NORTH + 2.9' WEST  
RR SPK 20.00' NORTH  
Field Book: 18 Page: 73

I (SOUTHEAST CORNER)

Date Located: 6/97 + 2003 (NEW TIES)  
By: RTK + MEK  
Monument Description: 5/8" IRON REBAR IN CONCRETE  
Monument Witnesses: MAG NAIL IN P. POLE 34.18' NE  
" " " # 673/569 66.50' NW  
" " " # 682/493 33.35' SW  
Field Book: \_\_\_\_\_ Page: \_\_\_\_\_

ADDITIONAL NOTES

\*UPDATE\* 6/97  
① NW COR  
PK NAIL HARRISON MONUMENT 2/1/10  
② PK NAIL (SEE MAP ABOVE)



A (NORTHWEST CORNER)

Date Located: 7/11/92  
By: JR MOYER-EL HAINES  
Monument Description: HARRISON MONUMENT  
Monument Witnesses: \_\_\_\_\_  
SEE NAIL IN BOTTLE CAP IN NE FACE OF PHONE POLE WNW 59.30'  
FD P.N. NAIL IN W. FACE OF POWER POLE SE 45.15'  
MAG NAIL IN CONC HEADWALL NW 42.93'  
MAG NAIL IN CONC HEADWALL NE 41.72'  
Field Book: 1 Page: 71 UPDATED 8/20/18

B (NORTH QUARTER CORNER)

Date Located: \_\_\_\_\_  
By: \_\_\_\_\_  
Monument Description: \_\_\_\_\_  
Monument Witnesses: SEE PAGE 328 "H"  
5/4 POST 27-34-4  
\_\_\_\_\_  
\_\_\_\_\_  
Field Book: \_\_\_\_\_ Page: \_\_\_\_\_

C (NORTHEAST CORNER)

Date Located: \_\_\_\_\_  
By: \_\_\_\_\_  
Monument Description: \_\_\_\_\_  
Monument Witnesses: SEE PAGE 328 "I"  
SE COR. 27-34-4  
\_\_\_\_\_  
\_\_\_\_\_  
Field Book: \_\_\_\_\_ Page: \_\_\_\_\_

D (WEST QUARTER CORNER)

Date Located: 7/11/92  
By: JR MOYER-EL HAINES  
Monument Description: P.K. NAIL  
Monument Witnesses: ONE STORY FRAME SUEB W 27.70'  
CENTER OF A RR RAIL FCP E 20.18'  
P.K. NAIL MARSHALL COREMC POLE NE 66.86'  
\_\_\_\_\_  
Field Book: 1 Page: 71 UPDATED 8/20/18 SRM

E (CENTER OF SECTION)

Date Located: \_\_\_\_\_  
By: \_\_\_\_\_  
Monument Description: \_\_\_\_\_  
Monument Witnesses: \_\_\_\_\_  
\_\_\_\_\_  
Field Book: \_\_\_\_\_ Page: \_\_\_\_\_

F (EAST QUARTER CORNER)

Date Located: \_\_\_\_\_  
By: \_\_\_\_\_  
Monument Description: \_\_\_\_\_  
Monument Witnesses: SEE PAGE 330 "D"  
W 1/4 POST 35-34-4  
\_\_\_\_\_  
Field Book: \_\_\_\_\_ Page: \_\_\_\_\_

G (SOUTHWEST CORNER)

Date Located: 7/11/92  
By: JR MOYER-EL HAINES  
Monument Description: ALUM. DISH  
Monument Witnesses: \_\_\_\_\_  
SET NAIL IN BOTTLE CAP IN NW FACE OF NIPSCO P.P. ENE 27.10'  
" " " " " NE " " P. POLE SE 19.00'  
" " " " " NW " " NIPSCO P.P. SSW 24.08'  
Field Book: 1 Page: 70 UPDATED 5/22/18

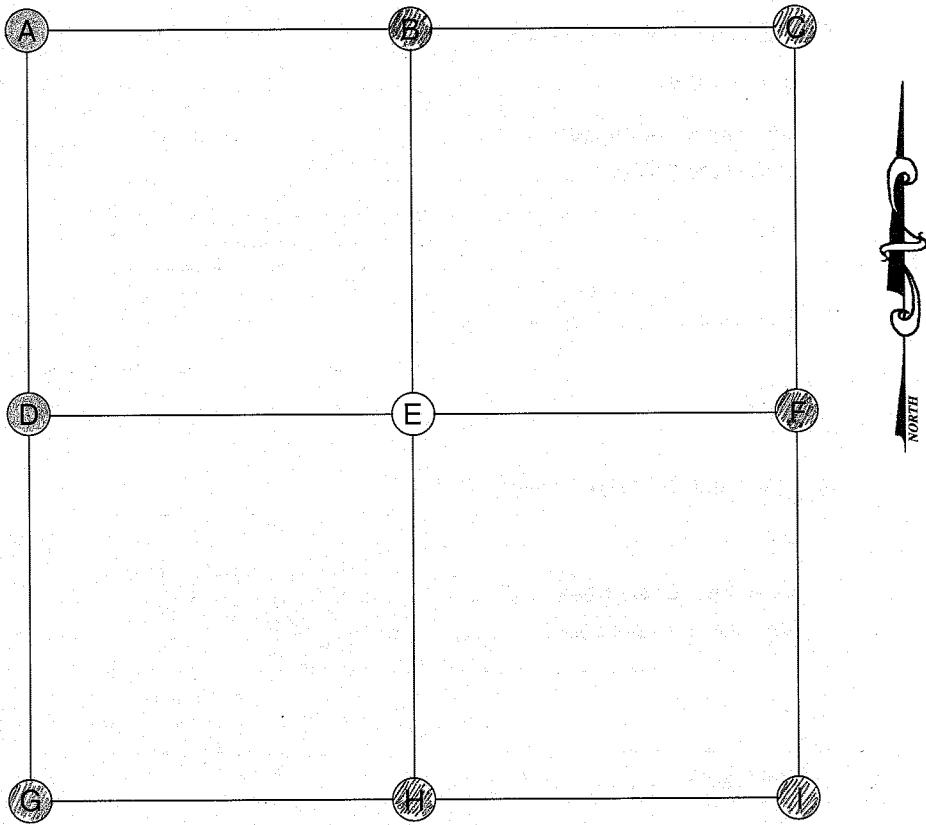
H (SOUTH QUARTER CORNER)

Date Located: \_\_\_\_\_  
By: \_\_\_\_\_  
Monument Description: \_\_\_\_\_  
Monument Witnesses: \_\_\_\_\_  
\_\_\_\_\_  
Field Book: \_\_\_\_\_ Page: \_\_\_\_\_

I (SOUTHEAST CORNER)

Date Located: 4/26/16  
By: SRM  
Monument Description: FD RR SPIKE FLUSH  
Monument Witnesses: 1/2" REBAR W/CAP 28.15' NE  
5 1/2" DIA CONC FILLED 1. POST 23.80' NE  
1/2" REBAR W/CAP 30.92' SW  
\_\_\_\_\_  
Field Book: 3 Page: 50

ADDITIONAL NOTES



A (NORTHWEST CORNER)

Date Located: \_\_\_\_\_  
By: \_\_\_\_\_  
Monument Description: \_\_\_\_\_  
Monument Witnesses: SEE PAGE 328 "I"  
SE COR. 27-34-4

Field Book: \_\_\_\_\_ Page: \_\_\_\_\_

B (NORTH QUARTER CORNER)

Date Located: 4/26/16  
By: SRM  
Monument Description: FO BOAT SPIKE 8" DEEP  
Monument Witnesses: SEE Pg 327 "H"

Field Book: 3 Page: 49

C (NORTHEAST CORNER)

Date Located: 4/22/16  
By: SRM  
Monument Description: FO BRONZE MONUMENT FLUSH  
Monument Witnesses: SEE Pg 326 "G"

Field Book: 3 Page: 48

D (WEST QUARTER CORNER)

Date Located: 4/2/2004  
By: RTK + MEK  
Monument Description: IRON ROD IN CONCRETE (FLUSH)  
Monument Witnesses: - FACE RP WEST 19.83'  
- FACE RP EAST 20.05'  
- 1/4" NAIL IN E. FACE P. POLE NE 62.20'

Field Book: 3 Page: 7

E (CENTER OF SECTION)

Date Located: \_\_\_\_\_  
By: \_\_\_\_\_  
Monument Description: \_\_\_\_\_  
Monument Witnesses: \_\_\_\_\_

Field Book: \_\_\_\_\_ Page: \_\_\_\_\_

F (EAST QUARTER CORNER)

Date Located: 5/22/19  
By: SRM MWH  
Monument Description: RR SPIKE  
Monument Witnesses: NAIL IN P. CAP NIPSCO P. NW 29.28'  
1/2" REBAR W/CAP NE 24.82'  
FACE RR RAIL FCP E 19.93'

Field Book: 14 Page: 31

G (SOUTHWEST CORNER)

Date Located: 4/26/16  
By: SRM  
Monument Description: FO RR SPIKE FLUSH  
Monument Witnesses: SEE Pg 329 "I"

Field Book: 3 Page: 50

H (SOUTH QUARTER CORNER)

Date Located: 1/17/19  
By: SRM  
Monument Description: RR SPIKE 7" DEEP  
Monument Witnesses: E RR RAIL FCP NW 34.42'  
FO 1" GIN SPINDLE W 40.38'  
1/2" REBAR W/CAP SW 24.95'

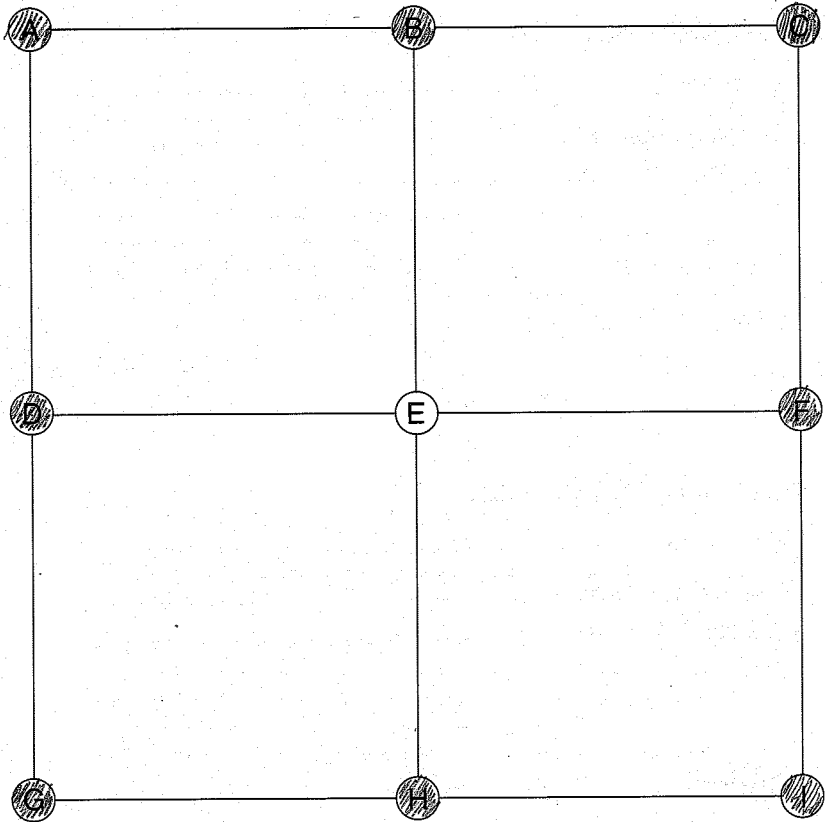
Field Book: 11 Page: 78

I (SOUTHEAST CORNER)

Date Located: 1/31/18  
By: SRM  
Monument Description: FO RR SPIKE  
Monument Witnesses: SEE Pg 331 "G"

Field Book: 8 Page: 62

ADDITIONAL NOTES



A (NORTHWEST CORNER)

Date Located: 4/22/16  
By: SR MOYER  
Monument Description: FD BRONZE MONUMENT FLUSH  
Monument Witnesses: SEE Pg 326 "G"

Field Book: 3 Page: 48

B (NORTH QUARTER CORNER)

Date Located: 4/22/16  
By: SR MOYER  
Monument Description: FD 5/8" IRON PIN FLUSH  
Monument Witnesses: SEE Pg 326 "H"

Field Book: 3 Page: 47

C (NORTHEAST CORNER)

Date Located: 4/8/16  
By: SRM  
Monument Description: FD BRONZE MARKER  
Monument Witnesses: SEE Pg 326 "I"

Field Book: 3 Page: 42

D (WEST QUARTER CORNER)

Date Located: 5/22/19  
By: SRM MWH  
Monument Description: RR SPIKE  
Monument Witnesses: SEE Pg 330 "F"

Field Book: 14 Page: 31

E (CENTER OF SECTION)

Date Located: \_\_\_\_\_  
By: \_\_\_\_\_  
Monument Description: \_\_\_\_\_  
Monument Witnesses: \_\_\_\_\_

Field Book: \_\_\_\_\_ Page: \_\_\_\_\_

F (EAST QUARTER CORNER)

Date Located: 9/24/18  
By: SRM  
Monument Description: FD 1/2" ROUND HEAD BOLT  
Monument Witnesses: SEE Pg "334" D

Field Book: 11 Page: 43

G (SOUTHWEST CORNER)

Date Located: 1/31/18  
By: SRM  
Monument Description: FD RR SPIKE FLUSH  
Monument Witnesses: 5/8" REBAR NO CAP W/ 36.30'  
NAIL IN B. CAP NIPSCO P POLE NE 46.80'  
1/2" REBAR W/CAP SSE 34.44'

Field Book: 8 Page: 62

H (SOUTH QUARTER CORNER)

Date Located: 5/22/19  
By: SRM MWH  
Monument Description: RR SPIKE  
Monument Witnesses: 1/2" REBAR W/CAP NW 32.76'  
FACE RR RAIL FCP N 19.86'  
NAIL IN B. CAP NIPSCO POLE SE 50.56'

Field Book: 14 Page: 21

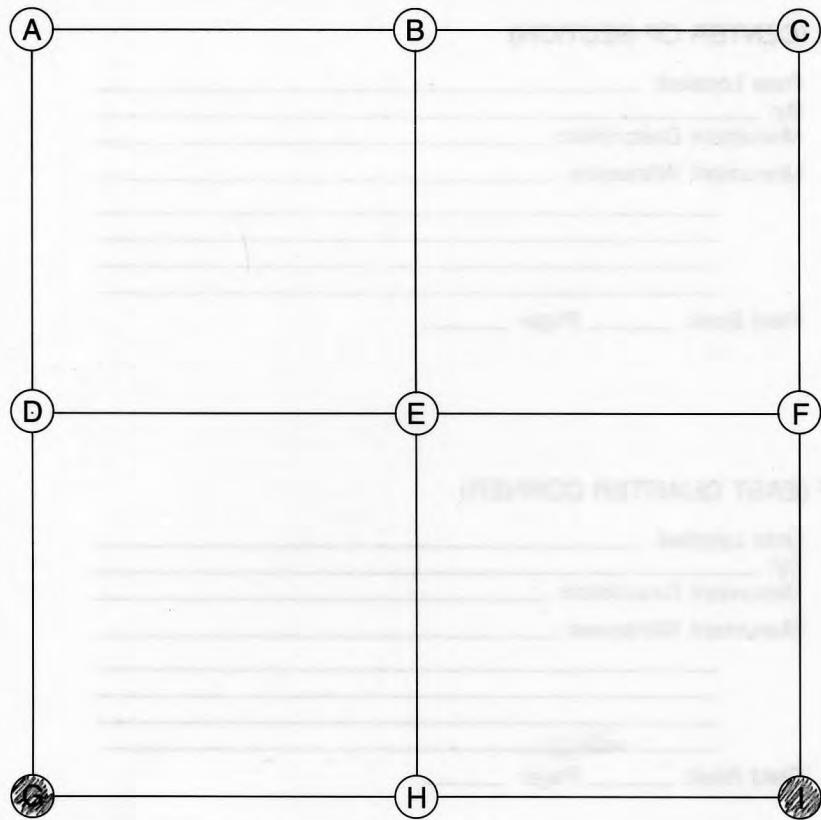
I (SOUTHEAST CORNER)

Date Located: 4/10/19  
By: \_\_\_\_\_  
Monument Description: \_\_\_\_\_  
Monument Witnesses: SEE Pg 31 "C"

Field Book: 13 Page: 14

ADDITIONAL NOTES





## A (NORTHWEST CORNER)

Date Located: \_\_\_\_\_  
 By: \_\_\_\_\_  
 Monument Description: \_\_\_\_\_  
 Monument Witnesses: \_\_\_\_\_

Field Book: \_\_\_\_\_ Page: \_\_\_\_\_

## B (NORTH QUARTER CORNER)

Date Located: \_\_\_\_\_  
 By: \_\_\_\_\_  
 Monument Description: \_\_\_\_\_  
 Monument Witnesses: \_\_\_\_\_

Field Book: \_\_\_\_\_ Page: \_\_\_\_\_

## C (NORTHEAST CORNER)

Date Located: \_\_\_\_\_  
 By: \_\_\_\_\_  
 Monument Description: \_\_\_\_\_  
 Monument Witnesses: \_\_\_\_\_

Field Book: \_\_\_\_\_ Page: \_\_\_\_\_

## D (WEST QUARTER CORNER)

Date Located: \_\_\_\_\_  
 By: \_\_\_\_\_  
 Monument Description: \_\_\_\_\_  
 Monument Witnesses: \_\_\_\_\_

Field Book: \_\_\_\_\_ Page: \_\_\_\_\_

## E (CENTER OF SECTION)

Date Located: \_\_\_\_\_  
 By: \_\_\_\_\_  
 Monument Description: \_\_\_\_\_  
 Monument Witnesses: \_\_\_\_\_

Field Book: \_\_\_\_\_ Page: \_\_\_\_\_

## F (EAST QUARTER CORNER)

Date Located: \_\_\_\_\_  
 By: \_\_\_\_\_  
 Monument Description: \_\_\_\_\_  
 Monument Witnesses: \_\_\_\_\_

Field Book: \_\_\_\_\_ Page: \_\_\_\_\_

## G (SOUTHWEST CORNER)

Date Located: 4/2/18  
 By: DEM  
 Monument Description: FO BRONZE MONUMENT  
 Monument Witnesses: SEE Pg 334 "C"

Field Book: 9 Page: 21

## H (SOUTH QUARTER CORNER)

Date Located: \_\_\_\_\_  
 By: \_\_\_\_\_  
 Monument Description: \_\_\_\_\_  
 Monument Witnesses: \_\_\_\_\_

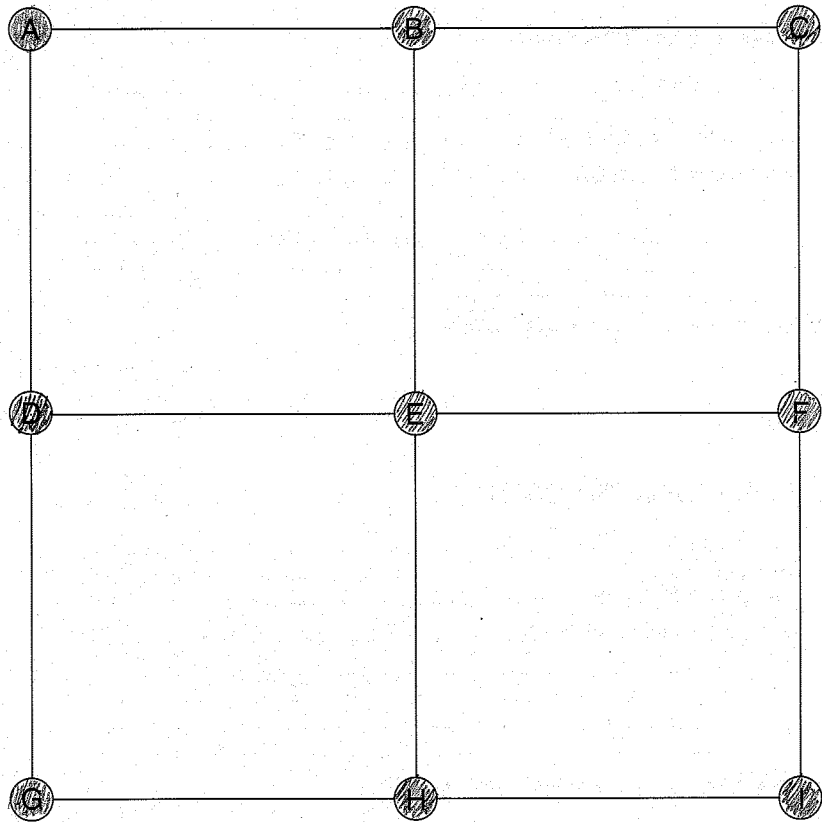
Field Book: \_\_\_\_\_ Page: \_\_\_\_\_

## I (SOUTHEAST CORNER)

Date Located: 4/2/18  
 By: DEM  
 Monument Description: FO BRONZE MONUMENT  
 Monument Witnesses: 4 RR RAIL FCP N 20.2'  
NAIL IN B. CAP REMC POLE N 21.77'  
NAIL IN B. CAP NIPSCO POLE ENE 61.24'  
4 RR RAIL FCP S 20.2'  
PK NAIL IN B. CAP POWER POLE S 18.19'

Field Book: 9 Page: 22

## ADDITIONAL NOTES



A (NORTHWEST CORNER)

Date Located: \_\_\_\_\_  
By: \_\_\_\_\_  
Monument Description: \_\_\_\_\_  
Monument Witnesses: SEE PAGE 325 "I"  
SE COR. 24-34-4

Field Book: \_\_\_\_\_ Page: \_\_\_\_\_

B (NORTH QUARTER CORNER)

Date Located: 5/22/19  
By: SEM MWH  
Monument Description: 3/4" REBAR  
Monument Witnesses: EDGE RR RAIL FCP NW 27.22'  
1/2" REBAR W/CAP NE 24.08'  
1/2" REBAR W/CAP SE 29.95'

Field Book: 14 Page: 25

C (NORTHEAST CORNER)

Date Located: 5/22/19  
By: SEM MWH  
Monument Description: 5/8" IRON PIN  
Monument Witnesses: 1/2" REBAR W/CAP NW 28.10'  
EDGE 3"x6" I BEAM FCP NNW 23.20'  
1/2" REBAR W/CAP SW 26.52'

Field Book: 14 Page: 24

D (WEST QUARTER CORNER)

Date Located: 4/20/16  
By: SEM  
Monument Description: MAG NAIL 2" DEEP  
Monument Witnesses: SEE Pg 326 "F"

Field Book: 3 Page: 40

E (CENTER OF SECTION)

Date Located: 5/22/19  
By: SEM MWH  
Monument Description: MAG NAIL W/CO TAG  
Monument Witnesses: NAIL W B.CAP NIPSCO P. WNW 50.54'  
4 RR RAIL FCP NNW 16.6'  
1/2" REBAR W/CAP SW 28.05'

Field Book: 14 Page: 22

F (EAST QUARTER CORNER)

Date Located: 5/22/19  
By: SEM MWH  
Monument Description: 5/8" IRON PIN  
Monument Witnesses: 1/2" REBAR W/CAP NW 23.72'  
EDGE RR RAIL FCP NE 17.45'  
1/2" REBAR W/CAP SE 23.83'

Field Book: 14 Page: 23

G (SOUTHWEST CORNER)

Date Located: 4/8/16  
By: SEM  
Monument Description: FO BRONZE MARKER FLUSH  
Monument Witnesses: SEE Pg 326 "I"

Field Book: 3 Page: 42

H (SOUTH QUARTER CORNER)

Date Located: 4/2/18  
By: SEM  
Monument Description: FO RR SPIKE  
Monument Witnesses: SEE Pg 334 "B"

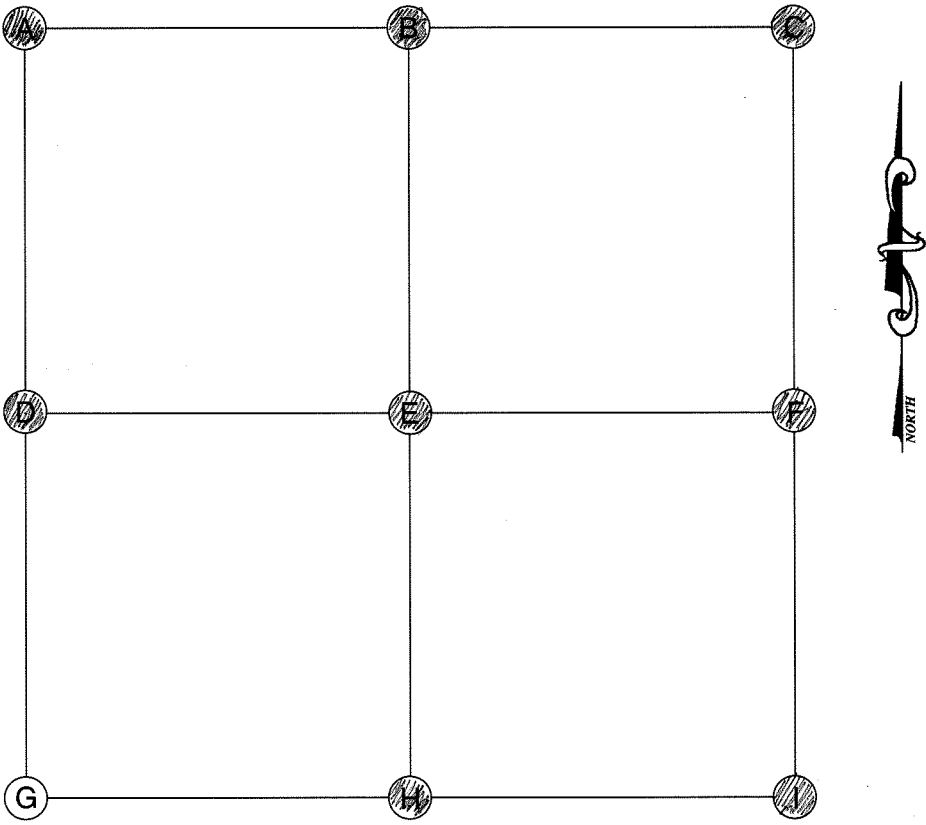
Field Book: 9 Page: 20

I (SOUTHEAST CORNER)

Date Located: 4/2/18  
By: SEM  
Monument Description: FO BRONZE MONUMENT  
Monument Witnesses: SEE Pg 334 "C"

Field Book: 9 Page: 21

ADDITIONAL NOTES



A (NORTHWEST CORNER)

Date Located: 4/8/16  
By: SRM  
Monument Description: FO BRONZE MARKER FLUSH  
Monument Witnesses: SEE Pg 326 "I"

Field Book: 3 Page: 42

B (NORTH QUARTER CORNER)

Date Located: 4/2/18  
By: SRM  
Monument Description: FO RR SPIKE  
Monument Witnesses: 1/2" RR RAIL FCP N 19.90'  
NAIL IN B. CAP IN POWER POLE ENE 49.35'  
1/2" RR RAIL FCP S 20.08'  
NAIL IN B. CAP REMC POLE S 22.31'

Field Book: 9 Page: 20

C (NORTHEAST CORNER)

Date Located: 4/2/18  
By: SRM  
Monument Description: FO BRONZE MONUMENT  
Monument Witnesses: NAIL IN B. CAP IN POWER POLE NW 24.56'  
1/2" REBAR W/CAP SE 42.45'  
NAIL IN B. CAP IN ANCHOR POLE SW 29.29'

Field Book: 9 Page: 21

D (WEST QUARTER CORNER)

Date Located: 9/25/18  
By: SRM  
Monument Description: FO 1/2" ROUND HEAD BOLT  
Monument Witnesses: 1/2" RR RAIL FCP W 20.4'  
NAIL IN B. CAP NIPSCO POWER POLE WNW 18.78'  
NAIL IN B. CAP NIPSCO POLE ESE 77.35'  
1/2" REBAR W/CAP SE 51.38'

Field Book: 11 Page: 43

E (CENTER OF SECTION)

Date Located: 9/25/18  
By: SRM  
Monument Description: MAG NAIL W/ CO TAG  
Monument Witnesses: 1/2" REBAR W/CAP NW 36.46'  
1/2" RR RAIL FCP N 20.4'  
NAIL IN B. CAP NIPSCO POLE SW 89.19'

Field Book: 11 Page: 45

F (EAST QUARTER CORNER)

Date Located: 9/25/18  
By: SRM  
Monument Description: RR SPIKE  
Monument Witnesses: NAIL IN B. CAP NIPSCO POLE SW 30.90'  
NAIL IN B. CAP TELEPHONE POLE NE 34.41'  
1/2" REBAR W/CAP SE 56.20'

Field Book: 11 Page: 44

G (SOUTHWEST CORNER)

Date Located: \_\_\_\_\_  
By: \_\_\_\_\_  
Monument Description: \_\_\_\_\_  
Monument Witnesses: \_\_\_\_\_

Field Book: \_\_\_\_\_ Page: \_\_\_\_\_

H (SOUTH QUARTER CORNER)

Date Located: 5/16/17  
By: SRM  
Monument Description: FO RR SPIKE  
Monument Witnesses: SEE Pg 283 "B"

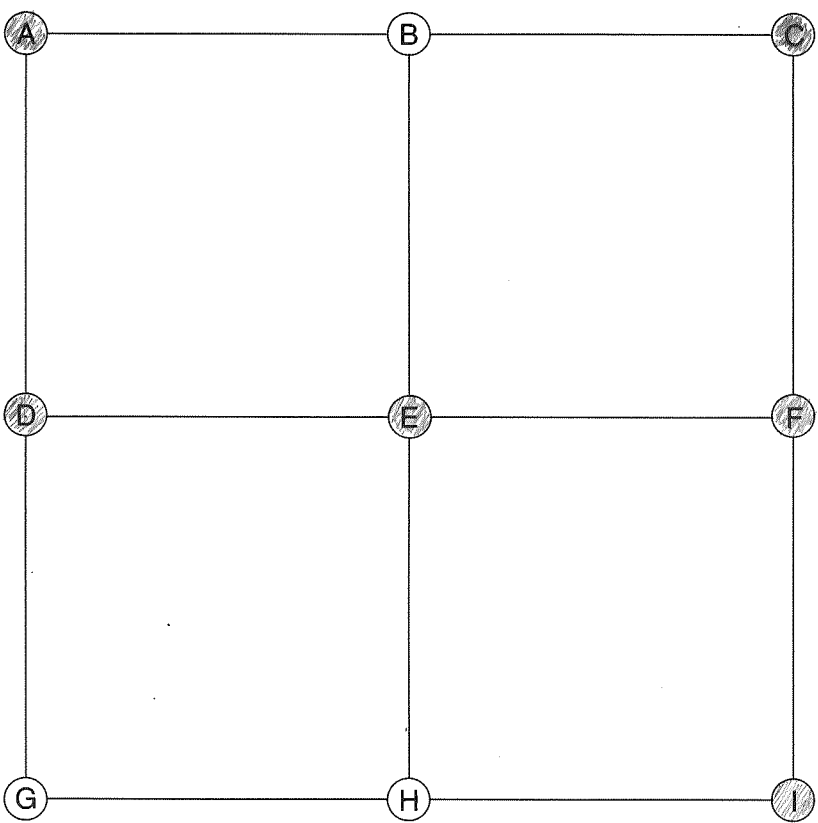
Field Book: 7 Page: 6

I (SOUTHEAST CORNER)

Date Located: 6/12/18  
By: SRM  
Monument Description: BRONZE MONUMENT  
Monument Witnesses: 1/2" REBAR W/CAP NW 29.60'  
1/2" REBAR W/CAP NE 37.52'  
MAG NAIL W/CO TAG E 12.54'

Field Book: 9 Page: 77

ADDITIONAL NOTES



E (CENTER OF SECTION)

Date Located: 7/15/20  
By: SEM MWH  
Monument Description: RR SPIKE  
Monument Witnesses: MAG NAIL NO TAG W 39.67'  
1/2" REBAR W/CAP NE 35.00'  
NAIL IN B. CAP POWER POLE SSE 21.20'

Field Book: 19 Page: 5

F (EAST QUARTER CORNER)

Date Located: 7/15/20  
By: SEM MWH  
Monument Description: 50 MAG SPIKE  
Monument Witnesses: 1/2" REBAR W/CAP NW 26.23'  
S FACE RR RAIL FCP N 20.0'  
NAIL IN B. CAP POWER POLE SSW 70.40'

Field Book: 19 Page: 4

A (NORTHWEST CORNER)

Date Located: 4/2/18  
By: SEM  
Monument Description: FO BRONZE MONUMENT  
Monument Witnesses: SEE Pg 334 "C"

Field Book: 9 Page: 21

G (SOUTHWEST CORNER)

Date Located: \_\_\_\_\_  
By: \_\_\_\_\_  
Monument Description: \_\_\_\_\_  
Monument Witnesses: \_\_\_\_\_

Field Book: \_\_\_\_\_ Page: \_\_\_\_\_

B (NORTH QUARTER CORNER)

Date Located: \_\_\_\_\_  
By: \_\_\_\_\_  
Monument Description: \_\_\_\_\_  
Monument Witnesses: \_\_\_\_\_

Field Book: \_\_\_\_\_ Page: \_\_\_\_\_

H (SOUTH QUARTER CORNER)

Date Located: \_\_\_\_\_  
By: \_\_\_\_\_  
Monument Description: \_\_\_\_\_  
Monument Witnesses: \_\_\_\_\_

Field Book: \_\_\_\_\_ Page: \_\_\_\_\_

C (NORTHEAST CORNER)

Date Located: 4/2/18  
By: SEM  
Monument Description: FO BRONZE MONUMENT  
Monument Witnesses: SEE Pg 332 "I"

Field Book: 9 Page: 23

I (SOUTHEAST CORNER)

Date Located: 7/15/20  
By: SEM MWH  
Monument Description: SET 4" GIN SPINDLE  
Monument Witnesses: 1/2" REBAR W/CAP NE 15.73'  
NAIL IN B. CAP WOOD FCP E 12.62'  
1/2" REBAR W/CAP SSE 19.59'

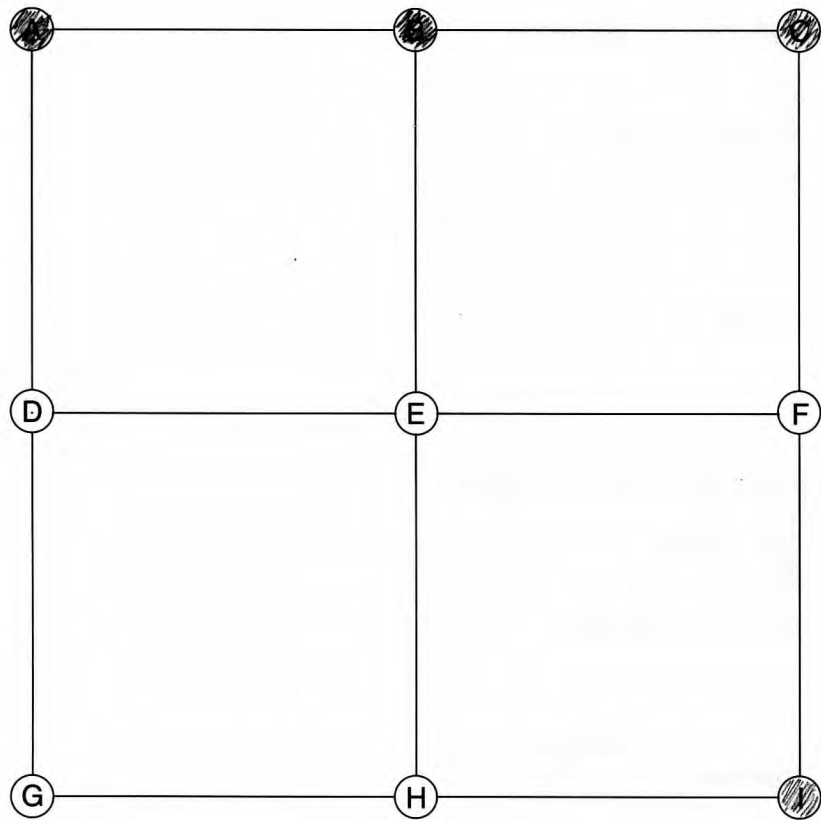
Field Book: 19 Page: 3

D (WEST QUARTER CORNER)

Date Located: 7/24/18  
By: SEM  
Monument Description: RR SPIKE  
Monument Witnesses: SEE Pg 334 "F"

Field Book: 11 Page: 44

ADDITIONAL NOTES



## A (NORTHWEST CORNER)

Date Located: 4/2/18  
 By: DEM  
 Monument Description: FO BRONZE MONUMENT  
 Monument Witnesses: SEE Pg 332 "I"

Field Book: 9 Page: 23

## B (NORTH QUARTER CORNER)

Date Located: 4/2/18  
 By: DEM  
 Monument Description: FO 1/2" REBAR  
 Monument Witnesses: NAIL IN B. CAP NIPSCO POLE NW 32.55'  
NAIL IN B. CAP POWER POLE SE 25.27'  
4" DIA STEEL FCP BROKEN OFF S 19.90'

Field Book: 9 Page: 24

## C (NORTHEAST CORNER)

Date Located: 4/5/18  
 By: DEM & MH  
 Monument Description: FO SPIKE NAIL FLUSH  
 Monument Witnesses: NAIL IN B. CAP NIPSCO POLE ENE 64.83'  
1/2" REBAR W/CAP SE 39.06'  
NAIL IN B. CAP POWER POLE SW 24.63'

Field Book: 9 Page: 27

## D (WEST QUARTER CORNER)

Date Located: \_\_\_\_\_  
 By: \_\_\_\_\_  
 Monument Description: \_\_\_\_\_  
 Monument Witnesses: \_\_\_\_\_

Field Book: \_\_\_\_\_ Page: \_\_\_\_\_

## E (CENTER OF SECTION)

Date Located: \_\_\_\_\_  
 By: \_\_\_\_\_  
 Monument Description: \_\_\_\_\_  
 Monument Witnesses: \_\_\_\_\_

Field Book: \_\_\_\_\_ Page: \_\_\_\_\_

## F (EAST QUARTER CORNER)

Date Located: \_\_\_\_\_  
 By: \_\_\_\_\_  
 Monument Description: \_\_\_\_\_  
 Monument Witnesses: \_\_\_\_\_

Field Book: \_\_\_\_\_ Page: \_\_\_\_\_

## G (SOUTHWEST CORNER)

Date Located: \_\_\_\_\_  
 By: \_\_\_\_\_  
 Monument Description: \_\_\_\_\_  
 Monument Witnesses: \_\_\_\_\_

Field Book: \_\_\_\_\_ Page: \_\_\_\_\_

## H (SOUTH QUARTER CORNER)

Date Located: \_\_\_\_\_  
 By: \_\_\_\_\_  
 Monument Description: \_\_\_\_\_  
 Monument Witnesses: \_\_\_\_\_

Field Book: \_\_\_\_\_ Page: \_\_\_\_\_

## I (SOUTHEAST CORNER)

Date Located: 8/1/16  
 By: DEM  
 Monument Description: FO 1/2" REBAR  
 Monument Witnesses: SE CORNER BRIDGE BEAM NW 41.35'  
SW CORNER BRIDGE BEAM NE 45.27'  
NAIL IN B. CAP IN P. POLE SSW 20.45'

Field Book: 4 Page: 41

## ADDITIONAL NOTES