

A (NORTHWEST CORNER)

Date Located: _____
 By: _____
 Monument Description: _____
 Monument Witnesses: _____

Field Book: _____ Page: _____

B (NORTH QUARTER CORNER)

Date Located: _____
 By: _____
 Monument Description: _____
 Monument Witnesses: _____

Field Book: _____ Page: _____

C (NORTHEAST CORNER)

Date Located: _____
 By: _____
 Monument Description: _____
 Monument Witnesses: _____

Field Book: _____ Page: _____

D (WEST QUARTER CORNER)

Date Located: 2/29/18
 By: SEM
 Monument Description: RR SPIKE
 Monument Witnesses: SEE Pg 351 "F"

Field Book: 11 Page: 8

E (CENTER OF SECTION)

Date Located: _____
 By: _____
 Monument Description: _____
 Monument Witnesses: _____

Field Book: _____ Page: _____

F (EAST QUARTER CORNER)

Date Located: _____
 By: _____
 Monument Description: _____
 Monument Witnesses: _____

Field Book: _____ Page: _____

G (SOUTHWEST CORNER)

Date Located: _____
 By: _____
 Monument Description: _____
 Monument Witnesses: SEE PAGE 354 "I" THIS BOOK
SE COR. 10-31-5

Field Book: _____ Page: _____

H (SOUTH QUARTER CORNER)

Date Located: 9/11/18
 By: SEM
 Monument Description: RR SPIKE
 Monument Witnesses: NAIL IN B. CAP REMC POLE NE 44.47'
NAIL IN B. CAP POWER POLE ESE 86.70'

Field Book: 11 Page: 17

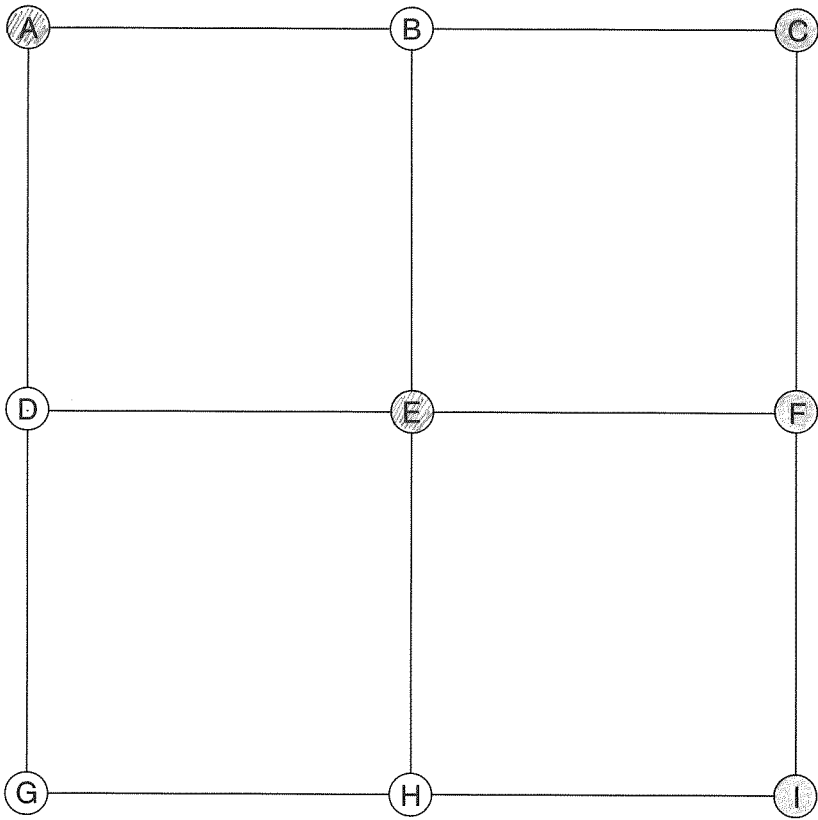
I (SOUTHEAST CORNER)

Date Located: _____
 By: _____
 Monument Description: _____
 Monument Witnesses: _____

Field Book: _____ Page: _____

ADDITIONAL NOTES

Seward
4-31-5



E (CENTER OF SECTION)

Date Located: 4/15/21
 By: JRM MWH
 Monument Description: RR RAIL FCP
 Monument Witnesses: _____

 Field Book: 20 Page: 5

F (EAST QUARTER CORNER)

Date Located: 6/1/92
 By: JR MOYER - EC HAINES
 Monument Description: PK NAIL
 Monument Witnesses: FACE OF RR RAIL FCP W 20.15
FACE OF RR RAIL FCP E 20.10
RR RAIL FCP - FACE TO FACE 40.25
1/2" REBAR W/CAP SE 45.23'
 Field Book: 1 Page: 46 UPDATED 8/27/18 JRM

A (NORTHWEST CORNER)

Date Located: 5/26/16
 By: JR MOYER
 Monument Description: FO MAG NAIL FLUSH
 Monument Witnesses: MAG NAIL IN P POLE NNE 27.25'
MAG NAIL IN P POLE SSE 79.35'
RR RAIL FCP AT BASE SW 50.7'
PK NAIL IN 6 E 136.6'
 Field Book: 3 Page: 62

G (SOUTHWEST CORNER)

Date Located: _____
 By: _____
 Monument Description: _____
 Monument Witnesses: _____

 Field Book: _____ Page: _____

B (NORTH QUARTER CORNER)

Date Located: _____
 By: _____
 Monument Description: _____
 Monument Witnesses: _____

 Field Book: _____ Page: _____

H (SOUTH QUARTER CORNER)

Date Located: _____
 By: _____
 Monument Description: _____
 Monument Witnesses: _____

 Field Book: _____ Page: _____

C (NORTHEAST CORNER)

Date Located: 6/1/92
 By: JR MOYER - EC HAINES
 Monument Description: BRONZE MARKER
 Monument Witnesses: FACE OF RR RAIL FCP SW 46.02
SGT NAIL IN BOTTLE CAP IN SOUTH FACE OF RR RAIL WNW 52.50
" " " " " " NE. " " " " ESE 47.38
" " " " " " E. " " " " SSE 71.63
 Field Book: 1 Page: 46

I (SOUTHEAST CORNER)

Date Located: _____
 By: _____
 Monument Description: _____
 Monument Witnesses: SEE PAGE 351 THIS BOOK "G"
SW COR. 3-31-5

 Field Book: _____ Page: _____

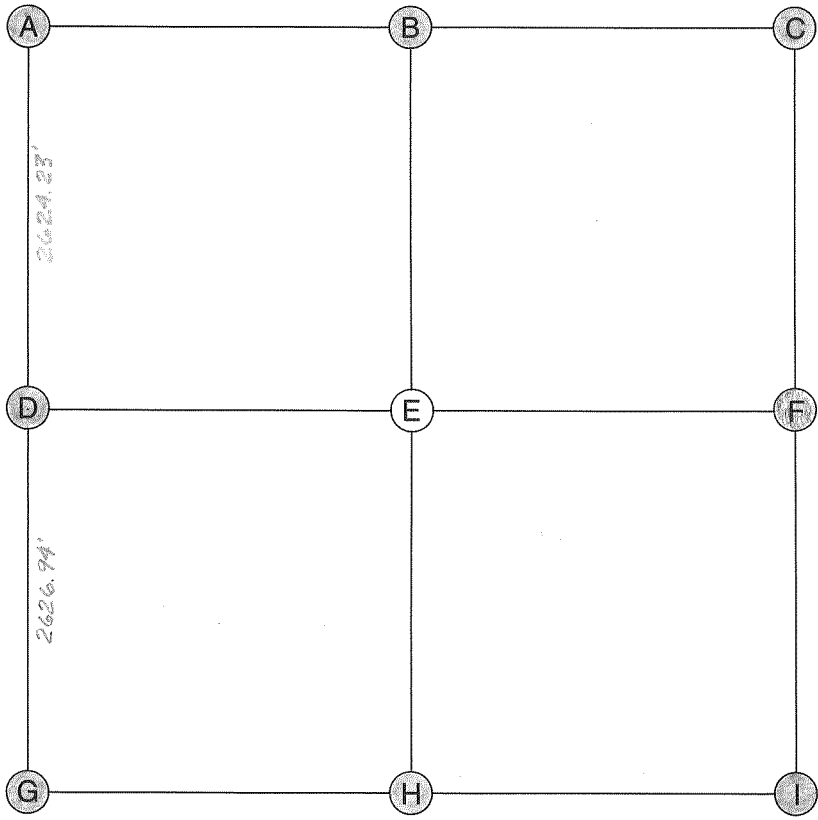
D (WEST QUARTER CORNER)

Date Located: _____
 By: _____
 Monument Description: _____
 Monument Witnesses: _____

 Field Book: _____ Page: _____

ADDITIONAL NOTES

Seward
16-31-5



E (CENTER OF SECTION)

Date Located: _____
 By: _____
 Monument Description: _____
 Monument Witnesses: _____

 Field Book: _____ Page: _____

F (EAST QUARTER CORNER)

Date Located: 5/15/19
 By: SEM MWH
 Monument Description: FO RB SPIKE
 Monument Witnesses: SEE PAGE 359 "D"
W/4 POST 15-31-5

 Field Book: 2 Page: 12

G (SOUTHWEST CORNER)

Date Located: 6/01
 By: MEX + E.D.
 Monument Description: RAILROAD SPIKE
 Monument Witnesses: 1/2" CAPPED I. REBAR NE 26.2'
" " " " NW 27.78'
" " " " W-SW 43.03'
" " " " SE 24.55'

 Field Book: _____ Page: _____

H (SOUTH QUARTER CORNER)

Date Located: 6/01 5/15/19 UPDATED
 By: MEX + E.D. SEM MWH
 Monument Description: RAILROAD SPIKE
 Monument Witnesses: 1/2" CAPPED I. REBAR - NE 40.64'
" " " " - W-NW 51.35'
" " " " - W-SW 34.33'
" " " " - E-SE 36.68'

 Field Book: 14 Page: 9

I (SOUTHEAST CORNER)

Date Located: 5/15/19
 By: SEM MWH
 Monument Description: RR SPIKE
 Monument Witnesses: NAIL IN B. CAP P. POLE NNW 71.69'
1/2" REBAR W/CAP NW 61.19'
NAIL IN B. CAP POWER POLE WNW 73.10'
NAIL IN B. CAP POWER POLE SSW 77.67'
USC&S BM "BUCKET NO 2" SE 59.16'

 Field Book: 14 Page: 10

ADDITIONAL NOTES

A (NORTHWEST CORNER)

Date Located: _____
 By: _____
 Monument Description: SEE PAGE 353 "G"
 Monument Witnesses: SW COR. 9-31-5

 Field Book: 1 Page: 8 UPDATED 9/12/18 SEM

B (NORTH QUARTER CORNER)

Date Located: 6/01
 By: MEX + E.D.
 Monument Description: RAILROAD SPIKE
 Monument Witnesses: _____
1/2" CAPPED I. REBAR SW 27.14'
- RIP (FACE) S 22.97'
" " " " E-NE 90.55'
" " " " NW 36.6'

 Field Book: 11 Page: 21 9/12/18 SEM

C (NORTHEAST CORNER)

Date Located: _____
 By: _____
 Monument Description: SEE PAGE 353 "I"
 Monument Witnesses: SE COR. 9-31-5

 Field Book: 1 Page: 8 UPDATED 9/12/18 SEM

D (WEST QUARTER CORNER)

Date Located: 5/19 7/16/20
 By: RJR + MEX SEM MWH
 Monument Description: RAILROAD IRON POST
 Monument Witnesses: _____

 Field Book: 19 Page: 7