

Date Located: 10/11/18
By: DEM
Monument Description: RR RAIL FCP
Monument Witnesses: _____

Field Book: 11 Page: 51

Date Located: _____
By: _____
Monument Description: _____
Monument Witnesses: _____

Field Book: _____ Page: _____

Date Located: 5/27/16
By: SR MOYER
Monument Description: FO BRONZE MONUMENT 4" DEEP
Monument Witnesses: MAG NAIL IN P POLE SE 46.74'
MAG NAIL IN P POLE SSW 77.23'
SET 1/2" REBAR W/CAP SW 42.10'

Field Book: 3 Page: 63

Date Located: 5/18/17
By: SEM
Monument Description: SET NAIL IN W/ CO TAG
Monument Witnesses: NAIL IN B. CAP P. POLE NNW 68.49
NAIL IN B. CAP P. POLE NE 34.32'
1/2" REBAR W/ CAP SE 32.42'
NAIL IN B. CAP POWER POLE SW 51.55'

Field Book: 7 Page: 10

Date Located: 6/21/10
By: SRM
Monument Description: FO BRONZE MONUMENT
Monument Witnesses: MAG NAIL IN POLE NE S1.49'
FACE OF RR RAIL FCP S 21.45'

Field Book: 4 Page: 10

Date Located: 9/10/20
By: JEM MWH
Monument Description: SET RR SPIKE
Monument Witnesses: 1/2" REBAR W/CAP NW 27.65'
1/2" REBAR W/CAP NE 24.90'
RR RAIL FCP S 20.00'

Field Book: 19 Page: 33

Date Located: 5/26/16
By: SR MOYER
Monument Description: FD MAG NAIL FLUSH
Monument Witnesses: MAG NAIL IN P. POLE NNE 27.25'
MAG NAIL IN P. POLE SSE 79.35'
& RR RAIL FCP AT BASE SW 50.7'
PK NAIL IN E 130.6'

Field Book: 3 Page: 62

Date Located: _____
By: _____
Monument Description: _____
Monument Witnesses: _____

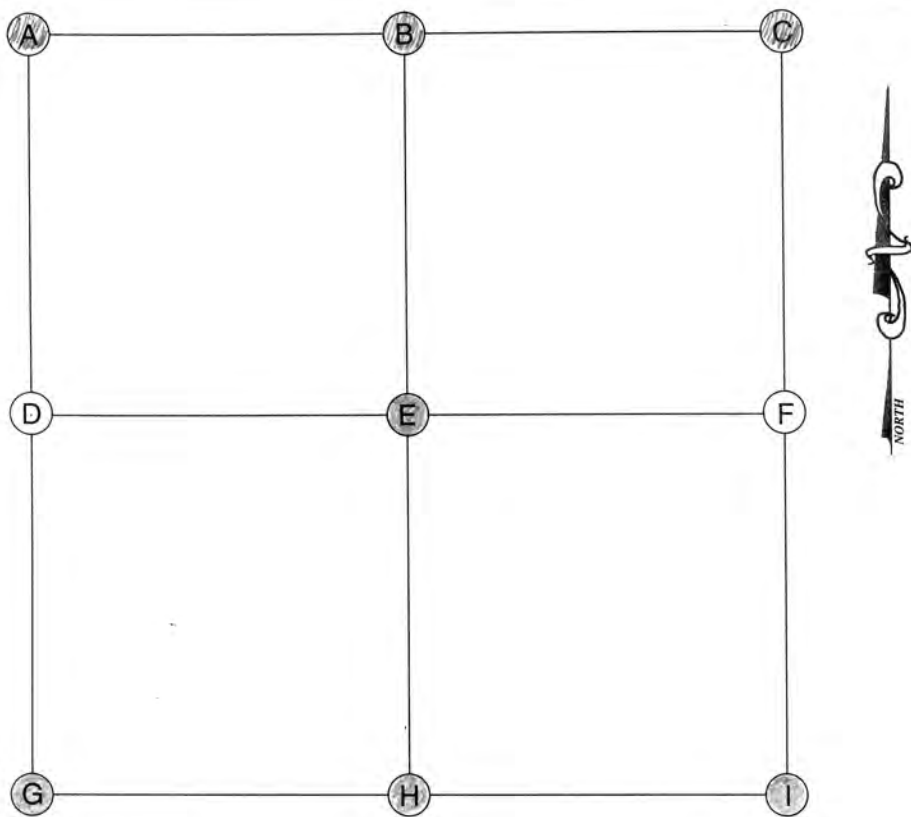
Field Book: _____ Page: _____

Date Located: 9/10/20
By: SEN MWH
Monument Description: MAG NAIL W/ CO TAG
Monument Witnesses: FO 5/8" REBAR NO CAP W/ 20.00
NAIL IN B. CAP POWER POLE E 21.88'
FACE OF RR RAIL FCD E 19.15'

Field Book: 19 Page: 32

ADDITIONAL NOTES

ADDITIONAL NOTES



A (NORTHWEST CORNER)

Date Located: 5/31/16
By: SR MOYER
Monument Description: FD MAG NAIL IN WASHER FLUSH
Monument Witnesses: MAG NAIL IN P POLE NE 30.75'
SET 1/2" REBAR W/CAP SE 40.77'

Field Book: 3 Page: 66

B (NORTH QUARTER CORNER)

Date Located: 5/31/16
By: SR MOYER
Monument Description: FD MAG NAIL IN WASHER FLUSH
Monument Witnesses: MAG NAIL IN P POLE SE 42.48'
SET 1/2" REBAR W/CAP SW 32.37'
N FACE OF A 10" DIA CONG FCP AT BASE SSE 24.42'

Field Book: 3 Page: 65

C (NORTHEAST CORNER)

Date Located: 5/27/16
By: SR MOYER
Monument Description: FD BRONZE MONUMENT FLUSH
Monument Witnesses: SEE Pg 70 "A"

Field Book: 3 Page: 63

D (WEST QUARTER CORNER)

Date Located: _____
By: _____
Monument Description: _____
Monument Witnesses: _____

Field Book: _____ Page: _____

E (CENTER OF SECTION)

Date Located: 6/18/92
By: JB MOYER-ELHAINES
Monument Description: P.N. NAIL
Monument Witnesses: FACE OF A REBAR FCP SE 30.91
SET NAIL IN BUTTLE CAP IN NE FACE POWER POLE NW 24.05
SET 4" IN NE FACE OF A REBAR FCP SW 27.59

Field Book: 1 Page: 53

F (EAST QUARTER CORNER)

Date Located: _____
By: _____
Monument Description: _____
Monument Witnesses: _____

Field Book: _____ Page: _____

G (SOUTHWEST CORNER)

Date Located: 6/18/16
By: SRM
Monument Description: SEE PAGE 72 "A" BOAT SPIKE
Monument Witnesses: _____

Field Book: 4 Page: 4

H (SOUTH QUARTER CORNER)

Date Located: _____
By: _____
Monument Description: SEE PAGE 72 "B"
Monument Witnesses: _____

Field Book: _____ Page: _____

I (SOUTHEAST CORNER)

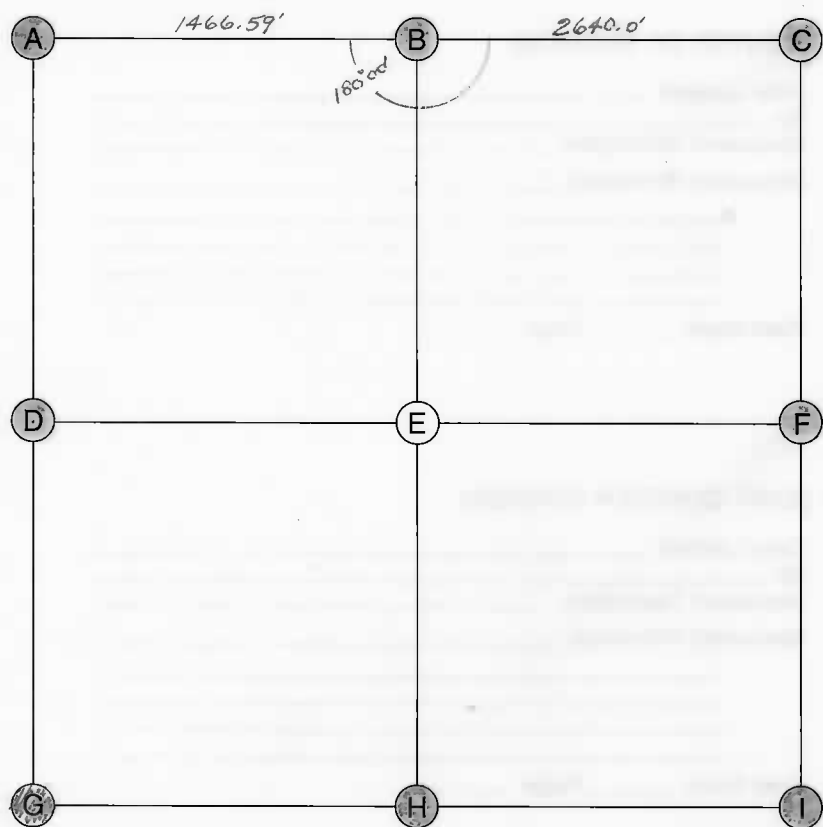
Date Located: 5/18/17
By: SRM
Monument Description: SET MAG NAIL W/ CO TAG
Monument Witnesses: SEE Pg 70 "G"

Field Book: 7 Page: 10

ADDITIONAL NOTES

Franklin

7-31-5



A (NORTHWEST CORNER)

Date Located: 6/01 6/8/16 UPDATED SRM
 By: MEK + E.D.
 Monument Description: PK NAIL OVER BOAT SPIKE
 Monument Witnesses: 1/2" REBAR W/CAP NW 37.52'
MAG NAIL IN P POLE NNW 25.37'
SET 1/2" REBAR W/CAP SW 39.05'

Field Book: 4 Page: 4

B (NORTH QUARTER CORNER)

Date Located: 10/05 9/15/18
 By: SRM
 Monument Description: RAILROAD SPIKE
 Monument Witnesses: NAIL IN B. CAP POWER POLE NW 19.37'
1/2" REBAR W/CAP NE 36.43'

Field Book: 11 Page: 10

C (NORTHEAST CORNER)

Date Located: 6/01 5/18/17
 By: MEK SRM
 Monument Description: PK NAIL / SET MAG NAIL W/GO TAG
 Monument Witnesses: SEE Pg 70 "G"

Field Book: 7 Page: 10

D (WEST QUARTER CORNER)

Date Located: 6/01 6/17/16 UPDATED SRM
 By: MEK
 Monument Description: RAILROAD SPIKE
 Monument Witnesses: RR RAIL FCP E 19.97'
RR RAIL FCP SE 42.50'
NAIL IN BOTTLE CAP IN POWER POLE SSE 75.35'

Field Book: 4 Page: 6

E (CENTER OF SECTION)

Date Located: _____
 By: _____
 Monument Description: _____
 Monument Witnesses: _____

Field Book: _____ Page: _____

F (EAST QUARTER CORNER)

Date Located: 10/05
 By: _____
 Monument Description: PK NAIL
 Monument Witnesses: N. FACE 10' CONC. PILE - 28.88' SE
3/8" REBAR 20.0' WEST
CENTER OF S. FACE OF RIP 20.1' SW
"X" IN SOUTH FACE OF RIP NE 22.43'

Field Book: 11 Page: 24 9/12/18 SRM

G (SOUTHWEST CORNER)

Date Located: 6/18/16
 By: DE MOYER
 Monument Description: FO MAG NAIL IN WASHER FLUSH
 Monument Witnesses: MAG NAIL IN TEL POLE NW 80.85'
SET 1/2" REBAR W/CAP NE 32.35'
MAG NAIL IN P POLE SW 74.29'
MAG NAIL IN TEL POLE REMC 1352 WSW 73.50'

Field Book: 4 Page: 3

H (SOUTH QUARTER CORNER)

Date Located: 6/01
 By: MEK + E.D.
 Monument Description: RAILROAD SPIKE
 Monument Witnesses: - RAILROAD SPIKE NW 17.45'
- 1/2" CAPPED 1. REBAR NE 30.05'
- " " " (2' N. OF FENCE) SE 26.41'
- " " " " " SW 24.70'

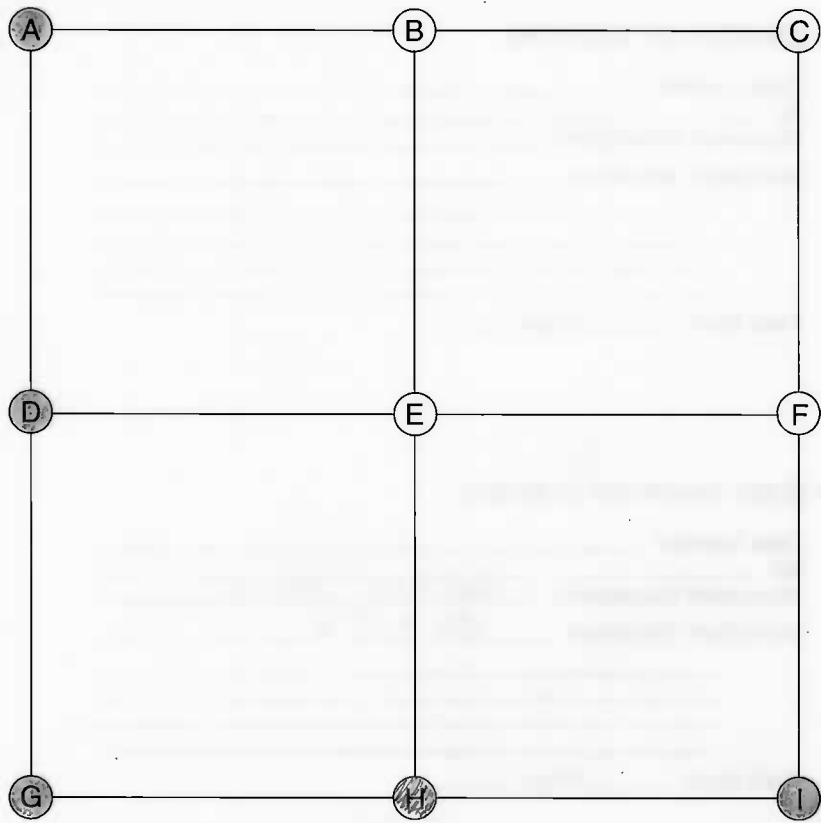
Field Book: 11 Page: 25 9/12/18 SRM

I (SOUTHEAST CORNER)

Date Located: 6/01
 By: MEK + E.D.
 Monument Description: BRIDGE PILE
 Monument Witnesses: - RIP NW 30.18'
- RIP NE 30.37'
- RIP S 19.83'

Field Book: 11 Page: 23 9/12/18 SRM

ADDITIONAL NOTES



E (CENTER OF SECTION)

Date Located: _____
By: _____
Monument Description: _____
Monument Witnesses: _____

Field Book: _____ Page: _____

F (EAST QUARTER CORNER)

Date Located: _____
By: _____
Monument Description: _____
Monument Witnesses: _____

Field Book: _____ Page: _____

A (NORTHWEST CORNER)

Date Located: 5/18/17
By: SEM
Monument Description: SET MAG NAIL w/ G TAG
Monument Witnesses: SEE Pg 70 "G"

Field Book: 7 Page: 10

G (SOUTHWEST CORNER)

Date Located: _____
By: _____
Monument Description: SEE PAGE 72 "I"
Monument Witnesses: SE COR 7-31-5

Field Book: 11 Page: 23 9/12/18 SEM

B (NORTH QUARTER CORNER)

Date Located: _____
By: _____
Monument Description: _____
Monument Witnesses: _____

Field Book: _____ Page: _____

H (SOUTH QUARTER CORNER)

Date Located: 9/12/18
By: SEM
Monument Description: RR SPIKE
Monument Witnesses: 1/2" REBAR w/CAP ENE 58.35'
NAIL IN B. CAP POWER POLE ESE 58.56'
& RR RAIL FCP S 19.6'

Field Book: 11 Page: 22

C (NORTHEAST CORNER)

Date Located: _____
By: _____
Monument Description: _____
Monument Witnesses: _____

Field Book: _____ Page: _____

I (SOUTHEAST CORNER)

Date Located: _____
By: _____
Monument Description: SEE PAGE 353 "G"
Monument Witnesses: SW 9-31-5

Field Book: 1 Page: 8 UPDATED 9/12/18 SEM

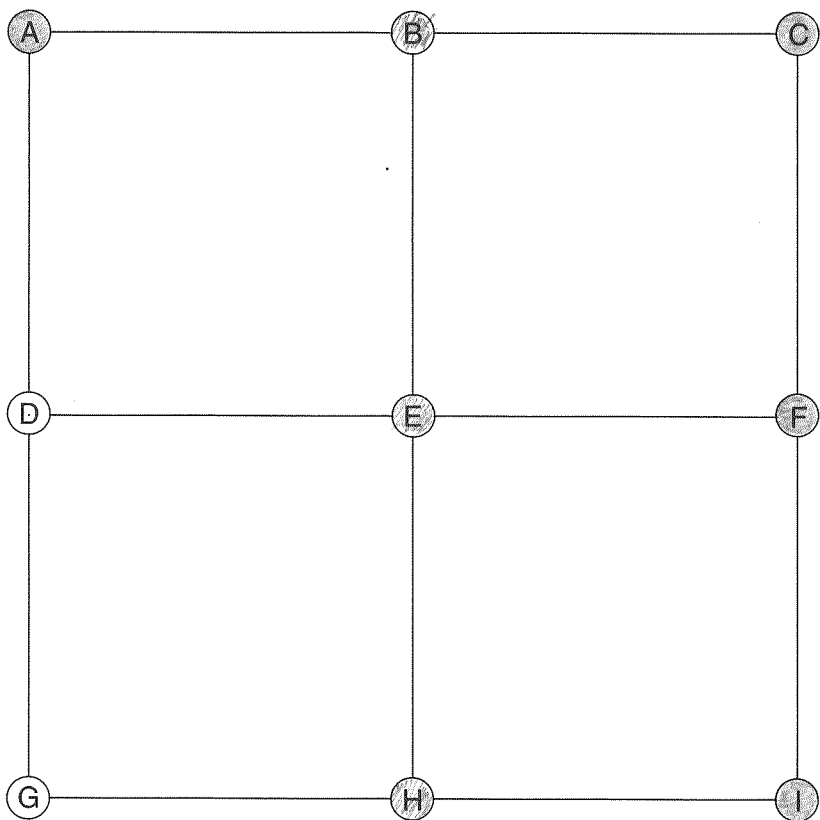
D (WEST QUARTER CORNER)

Date Located: _____
By: _____
Monument Description: SEE PAGE 72 "F"
Monument Witnesses: E 1/4 Post 7-31-5

Field Book: 11 Page: 24 9/12/18 SEM

ADDITIONAL NOTES

Franklin
17-31-5



E (CENTER OF SECTION)

Date Located: 4/15/21
By: SRM MWH
Monument Description: RR RAIL FCP
Monument Witnesses: _____

Field Book: 20 Page: 3

F (EAST QUARTER CORNER)

Date Located: _____
By: _____
Monument Description: SEE PAGE 360 "D"
Monument Witnesses: W/4 16-31-5

Field Book: _____ Page: _____

A (NORTHWEST CORNER)

Date Located: _____
By: _____
Monument Description: SEE PAGE 72 "I"
Monument Witnesses: SE 7-31-5

Field Book: 11 Page: 23 9/12/18 SRM

G (SOUTHWEST CORNER)

Date Located: _____
By: _____
Monument Description: _____
Monument Witnesses: _____

Field Book: _____ Page: _____

B (NORTH QUARTER CORNER)

Date Located: 9/12/18
By: SRM
Monument Description: RR SPIKE
Monument Witnesses: SEE Pg 73 "H"

Field Book: 11 Page: 22

H (SOUTH QUARTER CORNER)

Date Located: 9/18/19
By: SRM MWH
Monument Description: NAIL NAIL w/ CO TAG
Monument Witnesses: SEE Pg 77 "H"

Field Book: 17 Page: 41

C (NORTHEAST CORNER)

Date Located: _____
By: _____
Monument Description: SEE PAGE 353 "G"
Monument Witnesses: SW 9-31-5

Field Book: 1 Page: 8 UPDATED 9/12/18 SRM

I (SOUTHEAST CORNER)

Date Located: 2/27/19
By: SRM
Monument Description: RR SPIKE
Monument Witnesses: NAIL IN B. CAP TEL POLE WNW 49.74'
1/2" REBAR w/CAP NW 27.78'
1/2" REBAR w/CAP SE 24.55'
NAIL IN B. CAP POWER POLE WSW 52.49'

Field Book: 12 Page: 11

D (WEST QUARTER CORNER)

Date Located: _____
By: _____
Monument Description: _____
Monument Witnesses: _____

Field Book: _____ Page: _____

ADDITIONAL NOTES

Field Book: 4 Page: 3

Field Book: _____ Page: _____

Field Book: _____ Page: _____

Field Book: _____ Page: _____

Field Book: _____ Page: _____

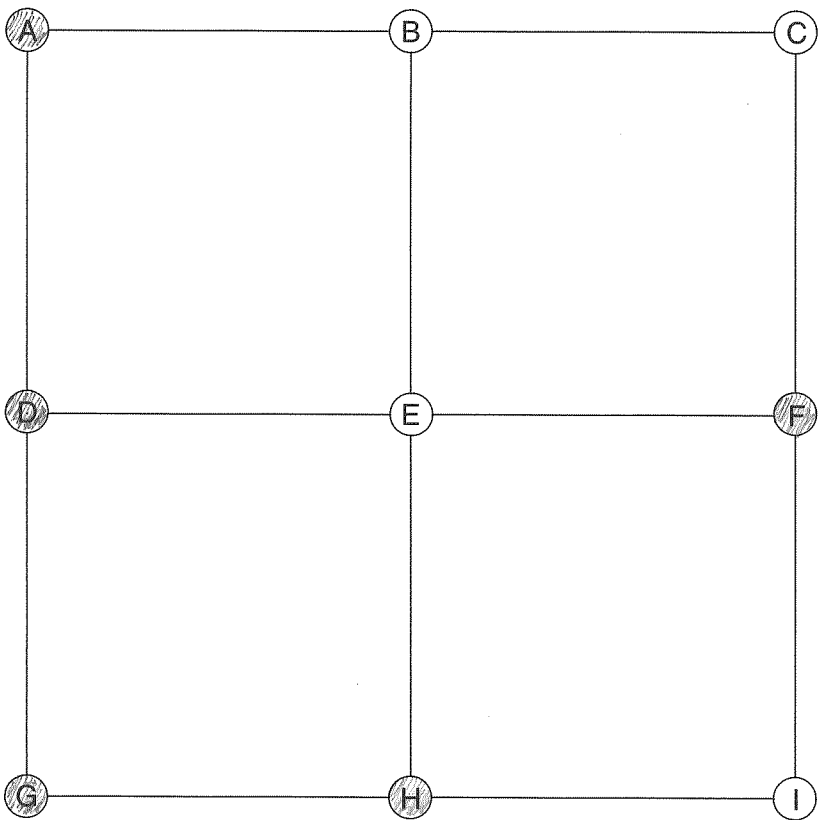
Field Book: _____ Page: _____

Field Book: 7 Page: 9

Field Book: _____ Page: _____

Field Book: _____ Page: _____

ADDITIONAL NOTES



E (CENTER OF SECTION)

Date Located: _____
By: _____
Monument Description: _____
Monument Witnesses: _____

Field Book: _____ Page: _____

F (EAST QUARTER CORNER)

Date Located: 5/26/21
By: SEM MWH
Monument Description: RTZ RAIL FCP
Monument Witnesses: _____

Field Book: 20 Page: 22

A (NORTHWEST CORNER)

Date Located: 5/13/17
By: SEM
Monument Description: FO BRONZE MONUMENT 3" DEEP
Monument Witnesses: SEE Pg 75 "G"

Field Book: 7 Page: 9

G (SOUTHWEST CORNER)

Date Located: 4/23/18
By: SEM
Monument Description: FO BRONZE MONUMENT FLUSH
Monument Witnesses: NAIL IN B. CAP POWER POLE WNW 80.69'
SE CORNER BRIDGE BEAM POST NW 42.25'
NAIL IN B CAP TEL BOX POST ESE 24.96'
NAIL IN B. CAP POWER POLE SSW 60.35'

Field Book: 9 Page: 44

B (NORTH QUARTER CORNER)

Date Located: _____
By: _____
Monument Description: _____
Monument Witnesses: _____

Field Book: _____ Page: _____

H (SOUTH QUARTER CORNER)

Date Located: 9/18/19
By: SEM MWH
Monument Description: FALLS IN DITCH
Monument Witnesses: _____

Field Book: 17 Page: 35

C (NORTHEAST CORNER)

Date Located: _____
By: _____
Monument Description: _____
Monument Witnesses: _____

Field Book: _____ Page: _____

I (SOUTHEAST CORNER)

Date Located: _____
By: _____
Monument Description: _____
Monument Witnesses: _____

Field Book: _____ Page: _____

D (WEST QUARTER CORNER)

Date Located: 4/24/18
By: SEM
Monument Description: FO RR SPIKE
Monument Witnesses: NAIL IN B. CAP POWER POLE NW 23.22'
FACE 10"X12" CONC FCP E 20.4'
NAIL IN B. CAP TEL POLE SW 47.75'

Field Book: 9 Page: 45

ADDITIONAL NOTES



Date Located: _____
By: _____
Monument Description: _____
Monument Witnesses: _____

Field Book: _____ Page: _____

Date Located: _____
By: _____
Monument Description: _____
Monument Witnesses: _____

Field Book: _____ Page: _____

Date Located: _____
By: _____
Monument Description: _____
Monument Witnesses: _____

Field Book: _____ Page: _____

Date Located: _____
By: _____
Monument Description: _____
Monument Witnesses: _____

Field Book: _____ Page: _____

Date Located: 9/18/19
By: JEM MWL
Monument Description: MAG NAIL w/CO TAG
Monument Witnesses: NAIL IN B CAP P. POLE NE 34.49'
1/2" REBAR w/CAP SE 31.06'
FD 1/2" REBAR AT BASE OF CONC POST S 19.68'

Field Book: 17 Page: 41

Date Located: 9/13/19
By: SJM MWJ
Monument Description: FORE SPIKE
Monument Witnesses: SEE P₂ 78 "B"

Field Book: 17 Page: 33

Date Located: _____
By: _____
Monument Description: SEE PAGE 360 "6"
Monument Witnesses: SW 16-31-5

Field Book: _____ Page: _____

Date Located: 9/18/19
By: SEM MWL
Monument Description: FORD SPIKE
Monument Witnesses: SEE PG 78 "C"

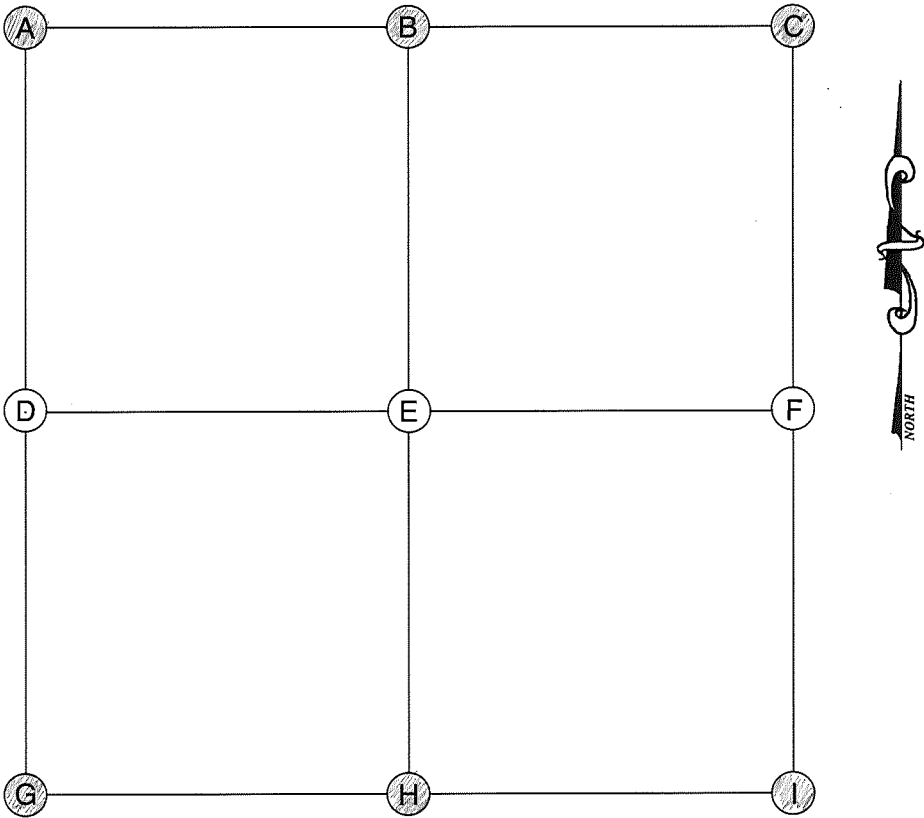
Field Book: 17 Page: 32

Date Located: _____
By: _____
Monument Description: _____
Monument Witnesses: _____

Field Book: _____ Page: _____

This image shows a single sheet of white paper with horizontal blue or grey ruling lines. The lines are evenly spaced and run across the width of the page. There are approximately 20 lines visible. The paper appears to be a standard notebook page.

Franklin
29-31-5



A (NORTHWEST CORNER)

Date Located: 9/13/19
By: SRM MNH
Monument Description: FO RR SPIKE
Monument Witnesses: RR RAIL FCP NNE 19.95'
1/2" REBAR W/CAP NE 22.12'
1/2" REBAR W/CAP SE 19.71'

Field Book: 17 Page: 34

B (NORTH QUARTER CORNER)

Date Located: 9/13/19
By: SRM MNH
Monument Description: FO RR SPIKE
Monument Witnesses: NAIL IN B. CAP POWER POLE N 16.08'
NAIL IN B. CAP POWER POLE SSE 16.86'
NAIL IN B. CAP POWER POLE SW 46.43'

Field Book: 17 Page: 33

C (NORTHEAST CORNER)

Date Located: 9/13/19
By: SRM MNH
Monument Description: FO RR SPIKE
Monument Witnesses: 1/2" REBAR W/CAP NW 27.65'
NAIL IN B. CAP POWER POLE NE 25.25'
RR RAIL FCP

Field Book: 17 Page: 32

D (WEST QUARTER CORNER)

Date Located: _____
By: _____
Monument Description: _____
Monument Witnesses: _____

Field Book: _____ Page: _____

E (CENTER OF SECTION)

Date Located: _____
By: _____
Monument Description: _____
Monument Witnesses: _____

Field Book: _____ Page: _____

F (EAST QUARTER CORNER)

Date Located: _____
By: _____
Monument Description: _____
Monument Witnesses: _____

Field Book: _____ Page: _____

G (SOUTHWEST CORNER)

Date Located: 8/27/19
By: SR MOYER
Monument Description: FO RR SPIKE
Monument Witnesses: NAIL IN B. CAP POWER POLE WSW 72.71'
1/2" REBAR W/CAP SW 38.07

Field Book: 17 Page: 4

H (SOUTH QUARTER CORNER)

Date Located: 8/27/19
By: SR MOYER
Monument Description: FO RR SPIKE
Monument Witnesses: 1/2" REBAR W/CAP NE 42.82'
N FACE RR RAIL FCP S 17.32'
NAIL IN B. CAP POWER POLE SSW 16.12'

Field Book: 17 Page: 3

I (SOUTHEAST CORNER)

Date Located: 2/27/19
By: SRM
Monument Description: BRONZE MONUMENT
Monument Witnesses: SEE Pg 31 "C"

Field Book: 12 Page: 12

ADDITIONAL NOTES



Date Located: _____
By: _____
Monument Description: _____
Monument Witnesses: _____

Date Located: 5/26/21
By: DEM MWH
Monument Description: RE SPIKE
Monument Witnesses: 1/2" REBAR w/CAP NW 20.05'
1/2" REBAR w/CAP NE 21.78'
1/2" REBAR w/CAP SW 20.58'

Date Located: 5/7/18
By: SRM
Monument Description: FO BRONZE MARVER
Monument Witnesses: SEE Pg 65 "I"

Date Located: 9/18/17
By: SRM
Monument Description: BRONZE / COPPER MARKER 2" DEEP
Monument Witnesses: PK NAIL IN TEL POLE NW 46.52'
1/2" REBAR W/ CAP 14' FROM E/P NE 63.21'
NAIL IN B. CAP IN P POLE SE 97.40'
NAIL IN B. CAP IN P POLE SW 51.26'

Date Located: 8/27/19
By: REMOVED
Monument Description: 5/8" REBAR
Monument Witnesses: SEE PG 79 "H"

Date Located: _____
By: _____
Monument Description: _____
Monument Witnesses: _____

Date Located: 8/27/19
By: DE MOYER
Monument Description: RR SPIKE
Monument Witnesses: SEE Pg 78 'G'

Date Located: 8/2/89
By: JK MOYER - FCLADSON
Monument Description: BOAT SPIKE
Monument Witnesses: SET PILE IN NW 1/4 CAP NW 1/4 40.38
SET NAIL IN BOTTLE CAP IN NW FACE OF OTHER POLE NW 1/4 65.01
" " " " " SE " " " " SW 66.50
NE CORNER OF 1/4 " 50 CONG FCL SW 68.90

Date Located: _____
By: _____
Monument Description: _____
Monument Witnesses: _____

ADDITIONAL NOTES



Date Located: _____
By: _____
Monument Description: _____
Monument Witnesses: _____

Date Located: _____
By: _____
Monument Description: _____
Monument Witnesses: _____

Date Located: UPDATED 2/25/19 JRM
By: _____
Monument Description: SEE SE 31-31-5
Monument Witnesses: PAGE 80 "I"

Date Located: _____
By: _____
Monument Description: _____
Monument Witnesses: _____

Date Located: _____
By: _____
Monument Description: _____
Monument Witnesses: _____

Date Located: _____
By: _____
Monument Description: _____
Monument Witnesses: _____

Date Located: 2/27/19
By: JRM
Monument Description: BRONZE MONUMENT
Monument Witnesses: NAIL IN B. CAP POWER POLE ESE 80.07'
1/2" REBAR W/ CAP NE 28.65'
4 RR RAIL FCP S 23.36'

Date Located: _____
By: _____
Monument Description: _____
Monument Witnesses: _____

Date Located: _____
By: _____
Monument Description: _____
Monument Witnesses: _____

ADDITIONAL NOTES