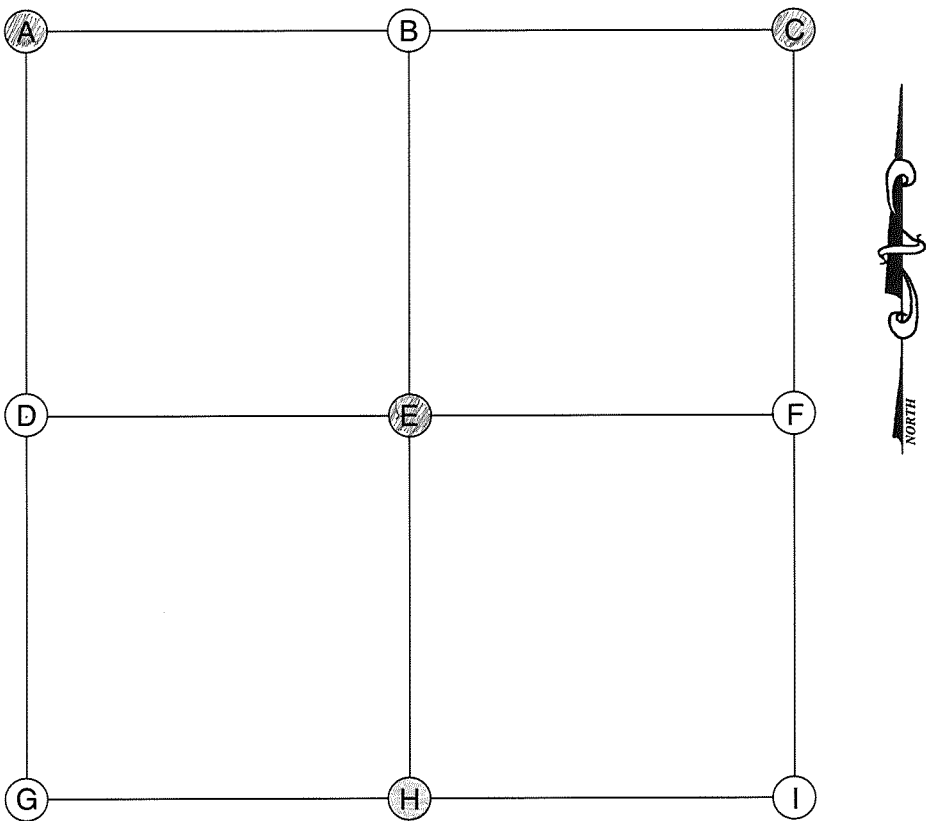


Franklin
5-30-5



A (NORTHWEST CORNER)

Date Located: 2/25/19
By: SEM
Monument Description: RR SPIKE
Monument Witnesses: SEE Pg 83 "C"

Field Book: 12 Page: 8

B (NORTH QUARTER CORNER)

Date Located: _____
By: _____
Monument Description: _____
Monument Witnesses: _____

Field Book: _____ Page: _____

C (NORTHEAST CORNER)

Date Located: 9/19/19
By: SEM MWH
Monument Description: FO RR SPIKE
Monument Witnesses: SEE Pg 340 "C"

Field Book: 14 Page: 50

D (WEST QUARTER CORNER)

Date Located: _____
By: _____
Monument Description: _____
Monument Witnesses: _____

Field Book: _____ Page: _____

E (CENTER OF SECTION)

Date Located: 9/19/19
By: SEM MWH
Monument Description: FO BRONZE MONUMENT
Monument Witnesses: 1/2" REBAR w/CAP NW 13.39'
1/2" REBAR w/CAP SW 17.38'
2" DIA STEEL IRP E 16.00'

Field Book: 17 Page: 43

F (EAST QUARTER CORNER)

Date Located: _____
By: _____
Monument Description: _____
Monument Witnesses: _____

Field Book: _____ Page: _____

G (SOUTHWEST CORNER)

Date Located: _____
By: _____
Monument Description: _____
Monument Witnesses: _____

Field Book: _____ Page: _____

H (SOUTH QUARTER CORNER)

Date Located: 5/14/98 + 7/14/99
By: TRK + WR
Monument Description: BRONZE / COPPER MARKER
Monument Witnesses: * NEAREST EDGE OF RIP - 30.37' NW
* " " " " - 82.45' W-SW
* " " " " - 99.25' S-SW
* " " " " - 94.38' S-SE
* " " " " - 78.55' E-SE

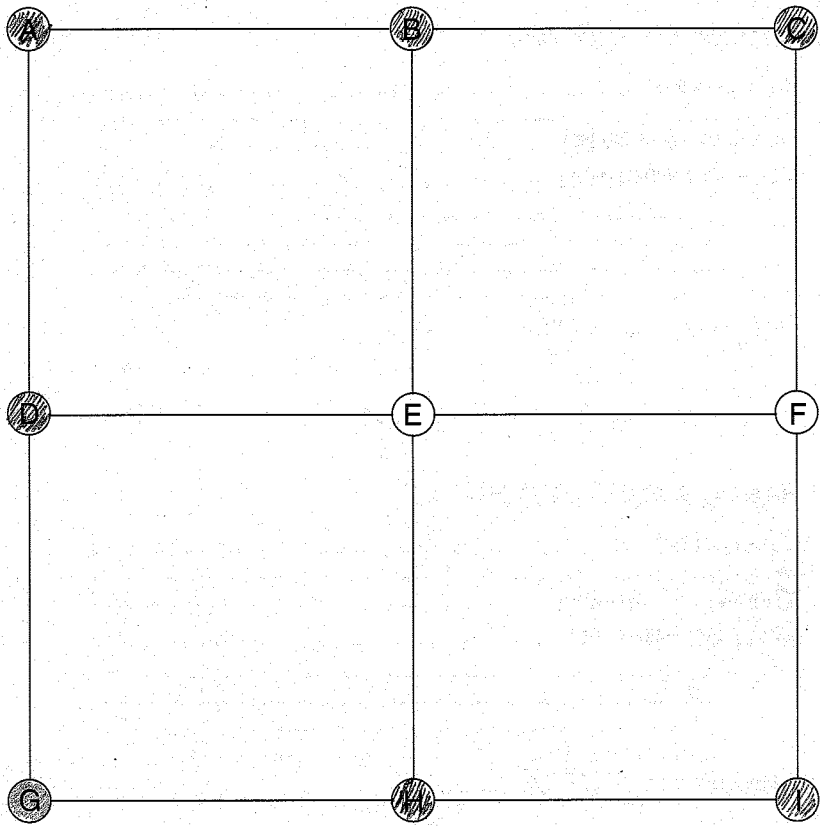
Field Book: _____ Page: _____
+ 1/2" REBAR w/ PLASTIC CAP
11' EAST OF CR 850W
(ORANGE ROAD) C.LINE, 46'
NORTH OF ST. RD. #14
PROTECTOR C.LINE - 45.45'
N-NE

I (SOUTHEAST CORNER)

Date Located: _____
By: _____
Monument Description: _____
Monument Witnesses: _____

Field Book: _____ Page: _____

ADDITIONAL NOTES



A (NORTHWEST CORNER)

Date Located: 9/18/17
By: SEM
Monument Description: BRONZE / COPPER MARKER
Monument Witnesses: SEE Pg 80 "G"

Field Book: 7 Page: 67

B (NORTH QUARTER CORNER)

Date Located: 2/25/19
By: SEM
Monument Description: BOAT SPIKE
Monument Witnesses: 4 RR RAIL FCP S 20.15'
1/2" REBAR w/CAP SE 27.63'

Field Book: 12 Page: 7

C (NORTHEAST CORNER)

Date Located: 2/25/19
By: SEM
Monument Description: RR SPIKE
Monument Witnesses: NAIL IN B. CAP P. POLE WSW 46.83'
FACE 8" SQ CONC FCP S 19.88'

Field Book: 12 Page: 8

D (WEST QUARTER CORNER)

Date Located: 9/18/17
By: SEM
Monument Description: 3/4" SQ HEAD BOLT IN CONC PAV 5" DEEP
Monument Witnesses: 1/2" REBAR w/CAP NW 20.05
1/2" REBAR w/CAP SW 22.43'
NAIL IN B. CAP IN P. POLE SSW 102.83'

Field Book: 7 Page: 65

E (CENTER OF SECTION)

Date Located: _____
By: _____
Monument Description: _____
Monument Witnesses: _____

Field Book: _____ Page: _____

F (EAST QUARTER CORNER)

Date Located: _____
By: _____
Monument Description: _____
Monument Witnesses: _____

Field Book: _____ Page: _____

G (SOUTHWEST CORNER)

Date Located: 8/11/92 + 7/14/99
By: JA MOYER - ECHANGES
Monument Description: BRONZE MARKER (PK NAIL FD 8.25' N-NW)
Monument Witnesses: NE EDGE OF RR RAIL FCP SSW 70.65
NE EDGE OF RR RAIL FCP WSW 66.22
SET NAIL IN BOTTLE CAP IN NE FACE OF REMC PP NNW 71.30
FD NAIL IN BOTTLE CAP IN SE FACE OF REMC PP ENE 51.26

Field Book: 2 Page: 38 UPDATED 2/27/17

H (SOUTH QUARTER CORNER)

Date Located: 3/8/17
By: SEM
Monument Description: FD MAG NAIL
Monument Witnesses: SEE Pg 84 "B"

Field Book: 6 Page: 29

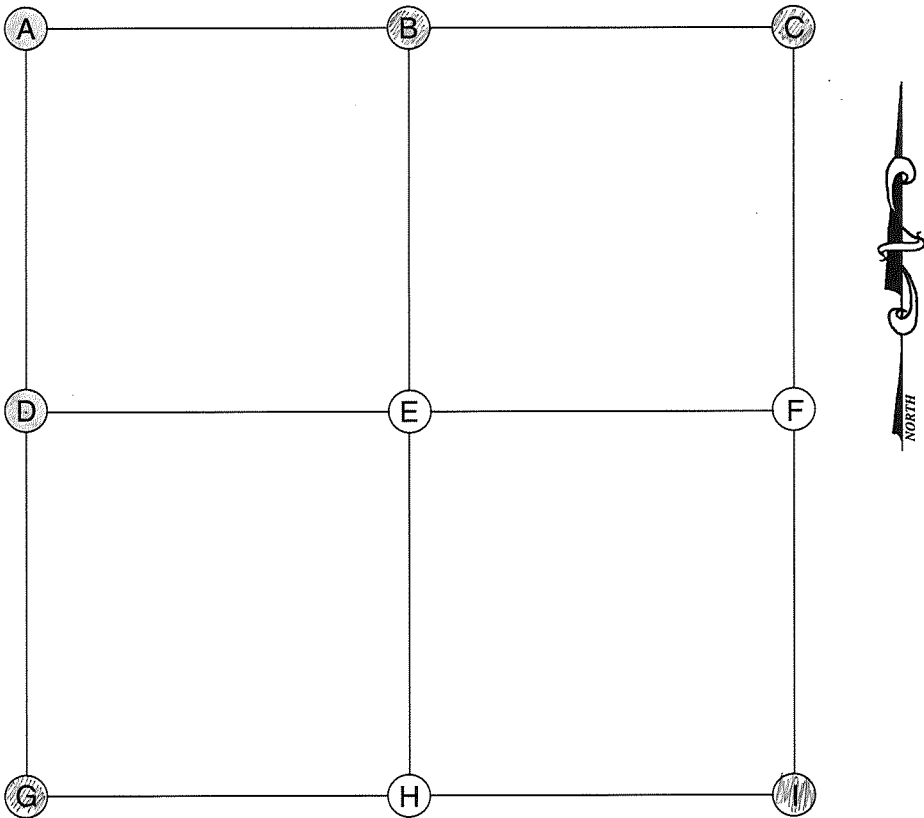
I (SOUTHEAST CORNER)

Date Located: 3/8/17
By: SEM
Monument Description: FD PK NAIL 2" DEEP
Monument Witnesses: SEE Pg 84 "C"

Field Book: 6 Page: 30

ADDITIONAL NOTES

RIP = RAILROAD IRON POST



A (NORTHWEST CORNER)

Date Located: _____
By: _____
Monument Description: _____
Monument Witnesses: SEE PAGE 83 "G"
SW 6-30-5

Field Book: _____ Page: _____

B (NORTH QUARTER CORNER)

Date Located: 3/2/17
By: SEM
Monument Description: FD MAG NAIL
Monument Witnesses: 1/2" REBAR FCP N 19.3'
NAIL IN TAG REMC POLE 4325 N 16.45'
1/2" REBAR W/CAP SE 56.13'
NAIL IN TAG REMC POLE 4324 S 20.59'

Field Book: 6 Page: 29

C (NORTHEAST CORNER)

Date Located: 3/3/17
By: SEM
Monument Description: FD PK NAIL 2" DEEP
Monument Witnesses: S. FACE 9" 50 CONC FCP N 14.94'
1/2" REBAR W/CAP NE 20.85'
N FACE CONC FCP S 14.75'
NAIL IN TAG REMC POLE 4313 S 17.03'
1/2" REBAR W/CAP SW 33.07'

Field Book: 6 Page: 30

D (WEST QUARTER CORNER)

Date Located: 5/14/98 + 7/14/99
By: TAK + VLR
Monument Description: Bronze Marker (PK FD 0.2' SOUTH)
Monument Witnesses: * NEAREST EDGE RIP - 18.93' E
* NEAREST EDGE RIP - 20.27' W
* PK NAIL W/PLASTIC CAP IN NORTH FACE OF REMC UTILITY POLE
* 1472 - 1753' E-NE
* 1/2" REBAR W/PLASTIC CAP 1' EAST OF N-S FENCE 20' WEST
OF C. LINE OF ST. RD. #14 - 49.72' S-SW
* 1/2" REBAR W/PLASTIC CAP 21' NORTH OF RIP
25' EAST OF C. LINE OF ST. RD. #14 - 32.64' NE
Field Book: 6 Page: 22

E (CENTER OF SECTION)

Date Located: _____
By: _____
Monument Description: _____
Monument Witnesses: _____

Field Book: _____ Page: _____

F (EAST QUARTER CORNER)

Date Located: _____
By: _____
Monument Description: _____
Monument Witnesses: _____

Field Book: _____ Page: _____

G (SOUTHWEST CORNER)

Date Located: 3/3/17
By: SEM
Monument Description: FD PK NAIL
Monument Witnesses: SEE Pg 87 "A"

Field Book: 6 Page: 26

H (SOUTH QUARTER CORNER)

Date Located: _____
By: _____
Monument Description: _____
Monument Witnesses: _____

Field Book: _____ Page: _____

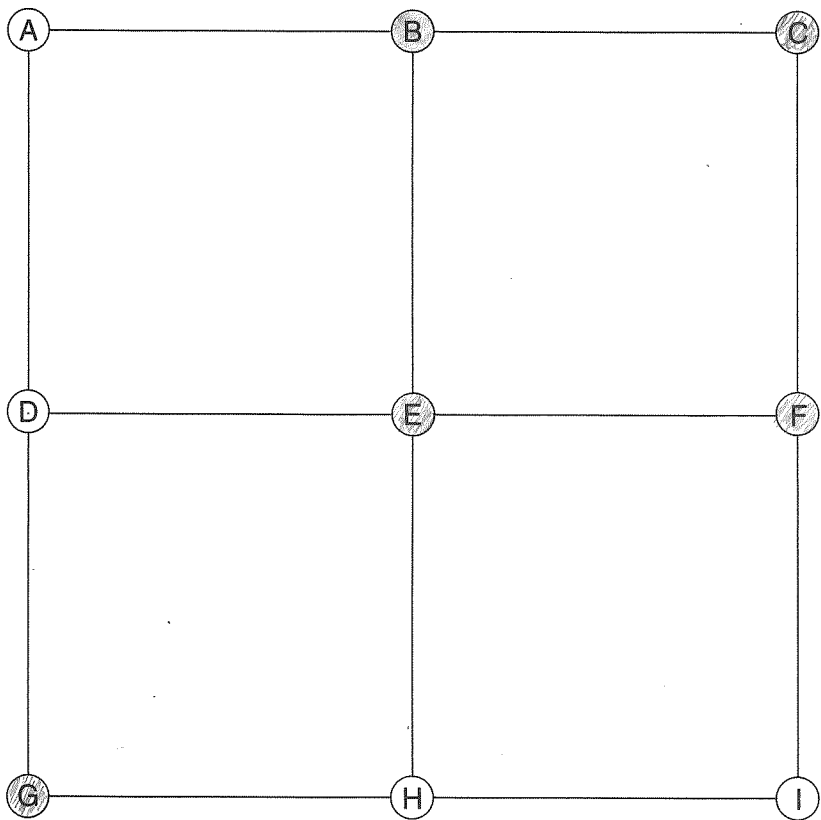
I (SOUTHEAST CORNER)

Date Located: 7/29/19
By: SEM
Monument Description: FD RR SPK
Monument Witnesses: 8" CONC FCP N 22.0'
NAIL IN B. CAP POWER POLE SSE 75.61'
NAIL IN B. CAP POWER POLE WSW 37.87'

Field Book: 16 Page: 19

ADDITIONAL NOTES

RIP = RAILROAD IRON POST



E (CENTER OF SECTION)
Date Located: 7/18/19
By: SEM MWH
Monument Description: MAG NAIL W/ CO TAG
Monument Witnesses: 1/2" REBAR W/CAP NW 24.32'
6" DIA STEEL FCP W 20.68'
RR RAIL FCP E 19.08'
Field Book: 17 Page: 42

F (EAST QUARTER CORNER)
Date Located: 4/7/21
By: SEM MWH
Monument Description: 16" SQ CONC FCP
Monument Witnesses:
Field Book: 19 Page: 75

A (NORTHWEST CORNER)
Date Located:
By:
Monument Description:
Monument Witnesses:
Field Book: Page:

G (SOUTHWEST CORNER)
Date Located: 7/29/19
By: SEM
Monument Description: FO RR SPIKE
Monument Witnesses: SEE PG 84 "I"
Field Book: 16 Page: 19

B (NORTH QUARTER CORNER)
Date Located: 3/3/17
By: SEM
Monument Description: FO BRONZE / COPPER MONUMENT
Monument Witnesses: 1 RR RAIL FCP NW 30.5'
NAIL IN TAG IN RENC POLE ESE 78.54'
NAIL IN TAG IN RENC POLE SSE 66.20'
1/2" REBAR W/CAP SW 50.86'
Field Book: 6 Page: 27

H (SOUTH QUARTER CORNER)
Date Located:
By:
Monument Description:
Monument Witnesses:
Field Book: Page:

C (NORTHEAST CORNER)
Date Located: 11/5/20
By: SEM MWH
Monument Description: FO PIN IN CONC
Monument Witnesses: SEE PG 340 "G"
Field Book: 19 Page: 62

I (SOUTHEAST CORNER)
Date Located:
By:
Monument Description:
Monument Witnesses:
Field Book: Page:

D (WEST QUARTER CORNER)
Date Located:
By:
Monument Description:
Monument Witnesses:
Field Book: Page:

ADDITIONAL NOTES



Field Book: _____ Page: _____

F (EAST QUARTER CORNER)

Field Book: 10 Page: 38

A (NORTHWEST CORNER)

Field Book: _____ Page: _____

G (SOUTHWEST CORNER)

Field Book: _____ Page: _____

B (NORTH QUARTER CORNER)

Field Book: _____ Page: _____

H (SOUTH QUARTER CORNER)

Field Book: _____ Page: _____

C (NORTHEAST CORNER)

Field Book: _____ Page: _____

I (SOUTHEAST CORNER)

Field Book: 12 Page: 15

D (WEST QUARTER CORNER)

Field Book: 10 Page: 37

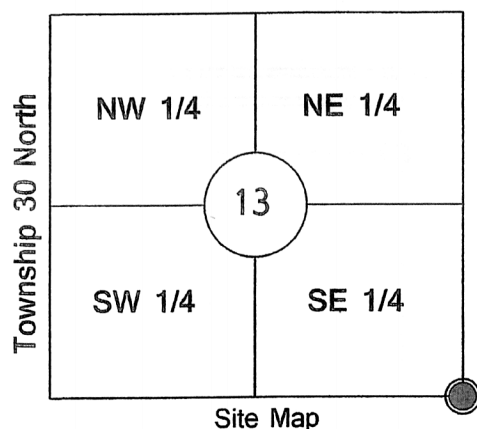
ADDITIONAL NOTES

Franklin
18-30-5

Corner J-25

Standard Corner
Range 4 East

Fulton County Section Corner Reference



Site Map

Office of the Fulton County Surveyor, Akron, Indiana

Corner Description: SE Corner of SE 1/4 Section 13-Twp30N, R4E

Date Recovered: May 15, 2015

Corner Recovered By: Barrie L. Bunnell, PLS

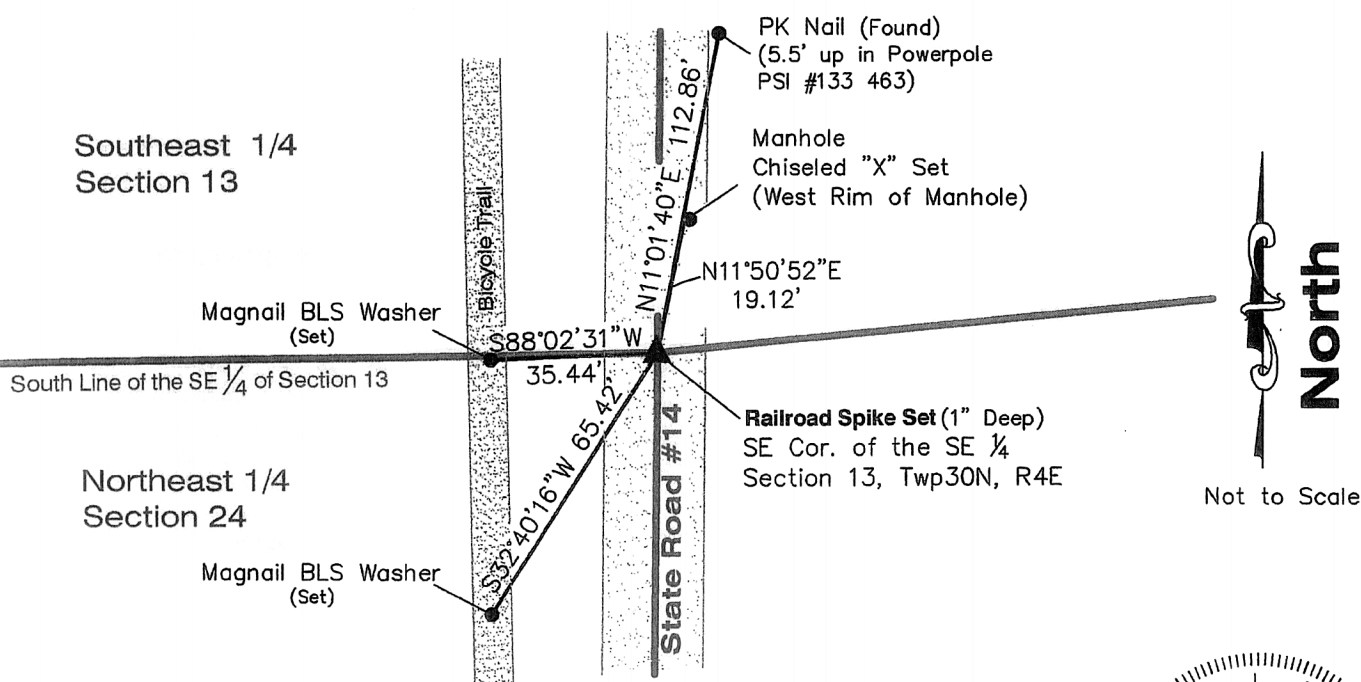
Corner Also Known As: NE Corner of NE 1/4 Section 24-30-4

NW Corner of NW 1/4 Section 19-30-5

Monument Found or Set: Railroad Spike Set 1" Deep

References:

- 1) NE N11°01'40"E 112.86' to a PK-Nail found 5.5' up in Powerpole PSI #133 463
- 2) NE N11°50'52"E 19.12' to a Chiseled "X" Set on the west rim of a Manhole
- 3) SW S32°40'16"W 65.42' to a Magnail set with Bunnell LS Washer in the pavement of a Bicycle Trail
- 4) SW S88°02'31"W 35.44' to a Magnail set with Bunnell LS Washer in the pavement of a Bicycle Trail

Southeast 1/4
Section 13Northeast 1/4
Section 24

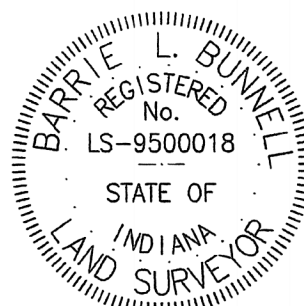
I Barrie L. Bunnell, a Registered Land Surveyor of the State of Indiana do hereby certify that the attached plat was prepared by me, and to the best of my knowledge and belief was executed in accordance with the requirements of the Indiana Survey Standards as defined in Title 865, Article 1, Rule 12 of the Indiana Administrative Code and LSA Document #05-82(F).

CERTIFIED BY:

Barrie L. Bunnell

Barrie L. Bunnell, P.L.S. #9500018

May 19, 2015



Page 1 of 2

C (NORTHEAST CORNER)

Date Located: _____

By: _____

Monument Description: _____

Monument Witnesses: _____

Field Book: _____ Page: _____

I (SOUTHEAST CORNER)

Date Located: _____

By: _____

Monument Description: _____

Monument Witnesses: _____

Field Book: _____ Page: _____

D (WEST QUARTER CORNER)

Date Located: 2/27/17

By: SEN

Monument Description: FO MAG NAIL FLUSH

Monument Witnesses: NAIL IN TAG P. POLE WNW 44.07'

1/2" REBAR W/CAP NE 28.71'

1/2" REBAR W/CAP SE 31.46'

NAIL IN TAG P. POLE WSW 32.84'

Field Book: 6 Page: 23

ADDITIONAL NOTES