

## A (NORTHWEST CORNER)

Date Located: \_\_\_\_\_  
 By: \_\_\_\_\_  
 Monument Description: \_\_\_\_\_  
 Monument Witnesses: \_\_\_\_\_

Field Book: \_\_\_\_\_ Page: \_\_\_\_\_

## B (NORTH QUARTER CORNER)

Date Located: \_\_\_\_\_  
 By: \_\_\_\_\_  
 Monument Description: \_\_\_\_\_  
 Monument Witnesses: \_\_\_\_\_

Field Book: \_\_\_\_\_ Page: \_\_\_\_\_

## C (NORTHEAST CORNER)

Date Located: \_\_\_\_\_  
 By: \_\_\_\_\_  
 Monument Description: \_\_\_\_\_  
 Monument Witnesses: \_\_\_\_\_

Field Book: \_\_\_\_\_ Page: \_\_\_\_\_

## D (WEST QUARTER CORNER)

Date Located: \_\_\_\_\_  
 By: \_\_\_\_\_  
 Monument Description: \_\_\_\_\_  
 Monument Witnesses: \_\_\_\_\_

Field Book: \_\_\_\_\_ Page: \_\_\_\_\_

## E (CENTER OF SECTION)

Date Located: \_\_\_\_\_  
 By: \_\_\_\_\_  
 Monument Description: \_\_\_\_\_  
 Monument Witnesses: \_\_\_\_\_

Field Book: \_\_\_\_\_ Page: \_\_\_\_\_

## F (EAST QUARTER CORNER)

Date Located: \_\_\_\_\_  
 By: \_\_\_\_\_  
 Monument Description: \_\_\_\_\_  
 Monument Witnesses: \_\_\_\_\_

Field Book: \_\_\_\_\_ Page: \_\_\_\_\_

## G (SOUTHWEST CORNER)

Date Located: 10/30/08  
 By: MEK  
 Monument Description: MAG NAIL W/ WASHER SET (TEMP)  
 Monument Witnesses: - SMALL MAG NAIL 7.00' NW  
- SMALL MAG NAIL 14.00' E  
- 1/2" REBAR W/ CAP 24.04' S-SE  
- 1/2" " " 28.57' N-NE

Field Book: 3 Page: 19

## H (SOUTH QUARTER CORNER)

Date Located: \_\_\_\_\_  
 By: \_\_\_\_\_  
 Monument Description: \_\_\_\_\_  
 Monument Witnesses: \_\_\_\_\_

Field Book: \_\_\_\_\_ Page: \_\_\_\_\_

## I (SOUTHEAST CORNER)

Date Located: \_\_\_\_\_  
 By: \_\_\_\_\_  
 Monument Description: \_\_\_\_\_  
 Monument Witnesses: \_\_\_\_\_

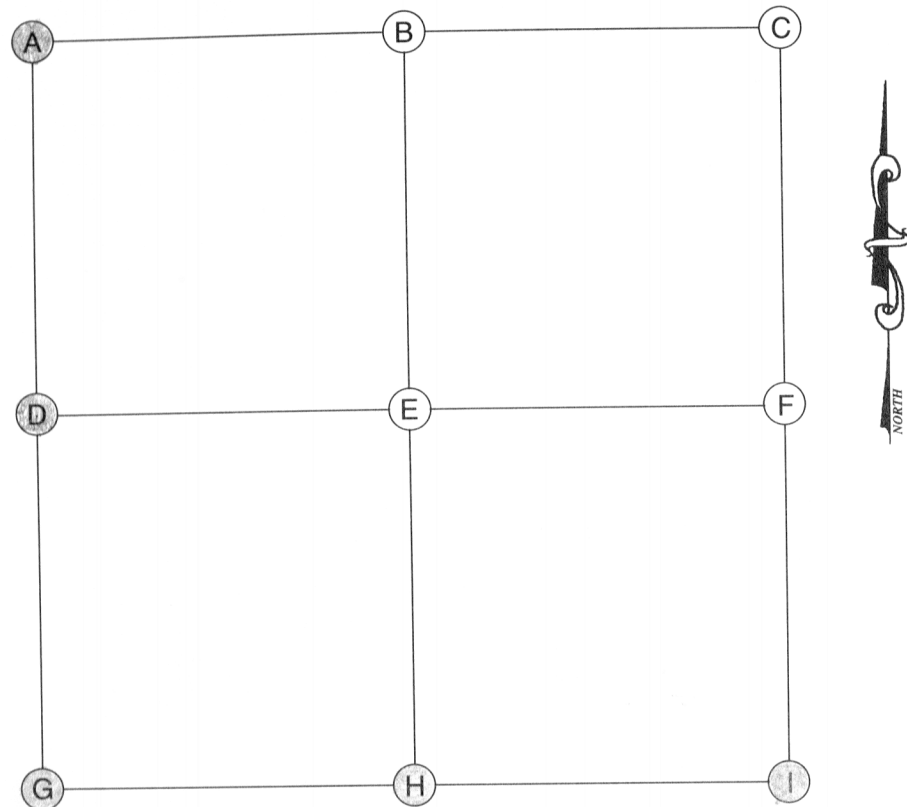
Field Book: \_\_\_\_\_ Page: \_\_\_\_\_

## ADDITIONAL NOTES

\_\_\_\_\_  
 \_\_\_\_\_  
 \_\_\_\_\_  
 \_\_\_\_\_  
 \_\_\_\_\_  
 \_\_\_\_\_  
 \_\_\_\_\_  
 \_\_\_\_\_  
 \_\_\_\_\_  
 \_\_\_\_\_

89  
 NG  
 CON-  
 TEM.





A (NORTHWEST CORNER)

Date Located: \_\_\_\_\_  
By: \_\_\_\_\_  
Monument Description: \_\_\_\_\_  
Monument Witnesses: SEE PAGE 375 "C"  
NE COR. 5-33-7

Field Book: \_\_\_\_\_ Page: \_\_\_\_\_

## B (NORTH QUARTER CORNER)

Date Located: \_\_\_\_\_  
By: \_\_\_\_\_  
Monument Description: \_\_\_\_\_  
Monument Witnesses: \_\_\_\_\_

Field Book: \_\_\_\_\_ Page: \_\_\_\_\_

C (NORTHEAST CORNER)

Date Located: \_\_\_\_\_  
By: \_\_\_\_\_  
Monument Description: \_\_\_\_\_  
Monument Witnesses: \_\_\_\_\_

Field Book: \_\_\_\_\_ Page: \_\_\_\_\_

## D (WEST QUARTER CORNER)

Date Located: \_\_\_\_\_  
By: \_\_\_\_\_  
Monument Description: \_\_\_\_\_  
Monument Witnesses: SEE PAGE 375 "F"  
E 1/4 POST 3-33-7

Field Book: \_\_\_\_\_ Page: \_\_\_\_\_

## E (CENTER OF SECTION)

Date Located: \_\_\_\_\_  
By: \_\_\_\_\_  
Monument Description: \_\_\_\_\_  
Monument Witnesses: \_\_\_\_\_

Field Book: \_\_\_\_\_ Page: \_\_\_\_\_

F (EAST QUARTER CORNER)

Date Located: \_\_\_\_\_  
By: \_\_\_\_\_  
Monument Description: \_\_\_\_\_  
Monument Witnesses: \_\_\_\_\_

Field Book: \_\_\_\_\_ Page: \_\_\_\_\_

G (SOUTHWEST CORNER)

Date Located: 10/12/98  
By: MEN  
Monument Description: 3D SIZE MARKER (TOP IS ON  
CORNER, BOTTOM OF ROD IS 0.1' NORTH)  
Monument Witnesses: \_\_\_\_\_  
FACE RIP 20' WEST  
1/2" REBAR WCAP: 32.75' NW (22' WEST OF PAVEMENT E)  
1/2" " : 31.22' SE (14' EAST " " " " " " )  
DN 1/4" NW FACE REMIC POLE # 5975: 61.48' NE

Field Book: \_\_\_\_\_ Page: \_\_\_\_\_

## H (SOUTH QUARTER CORNER)

Date Located: \_\_\_\_\_  
By: \_\_\_\_\_  
Monument Description: SEE PAGE 383 "B"  
Monument Witnesses: N 1/4 POST 11-33-7

Field Book: \_\_\_\_\_ Page: \_\_\_\_\_

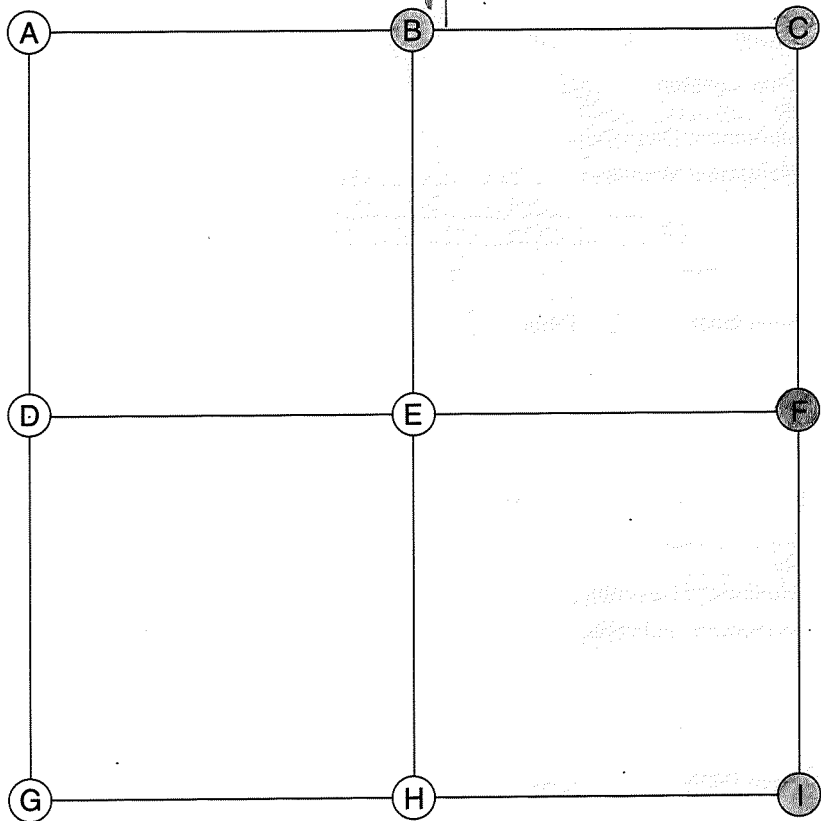
I (SOUTHEAST CORNER)

Date Located: \_\_\_\_\_  
By: \_\_\_\_\_  
Monument Description: \_\_\_\_\_  
Monument Witnesses: SEE PAGE 373 "G"  
SW COR. 1-33-7

Field Book: \_\_\_\_\_ Page: \_\_\_\_\_

### ADDITIONAL NOTES





E (CENTER OF SECTION)

Date Located: \_\_\_\_\_  
By: \_\_\_\_\_  
Monument Description: \_\_\_\_\_  
Monument Witnesses: \_\_\_\_\_

Field Book: \_\_\_\_\_ Page: \_\_\_\_\_

F (EAST QUARTER CORNER)

Date Located: 7-5-01  
By: TK - MK  
Monument Description: 5/8" R-BAR WITH "WALKER" CAP  
Monument Witnesses: CHISELED + IN STONE 20.65' NNE  
5/8" R-BAR 31.35' NNW  
5/8" R-BAR 23.35' SSW  
5/8" R-BAR 23.59' SE

Field Book: 3 Page: 4

G (SOUTHWEST CORNER)

Date Located: \_\_\_\_\_  
By: \_\_\_\_\_  
Monument Description: \_\_\_\_\_  
Monument Witnesses: \_\_\_\_\_

Field Book: \_\_\_\_\_ Page: \_\_\_\_\_

A (NORTHWEST CORNER)

Date Located: \_\_\_\_\_  
By: \_\_\_\_\_  
Monument Description: \_\_\_\_\_  
Monument Witnesses: \_\_\_\_\_

Field Book: \_\_\_\_\_ Page: \_\_\_\_\_

B (NORTH QUARTER CORNER)

Date Located: FOUND IN PLACE 5/8/01  
By: TEK  
Monument Description: RAILROAD SPIKE  
Monument Witnesses: 5/4 POST 34-34-7 RR SPR 191' EAST  
1/2" CORROD REBAR (23' N. PAVEMENT EDGE) 38.43' NW  
" " " (25' N. " " ) 49.83' NE  
" " " (17' S. " " ) 37.58' SE  
" " " (16' S. " " ) 37.3' SW

Field Book: 15 Page: 12 UPDATED 6/20/19

H (SOUTH QUARTER CORNER)

Date Located: \_\_\_\_\_  
By: \_\_\_\_\_  
Monument Description: \_\_\_\_\_  
Monument Witnesses: \_\_\_\_\_

Field Book: \_\_\_\_\_ Page: \_\_\_\_\_

C (NORTHEAST CORNER)

Date Located: FOUND IN PLACE 6/01  
By: MIEN + ERIC DISHER  
Monument Description: 1 1/4" I-PIPE  
Monument Witnesses: 1. PIPE 12' S  
1/2" CORROD I. REBAR SW 33.98'  
" " " NW 22.41'  
" " " N-NE 44.60'

Field Book: \_\_\_\_\_ Page: \_\_\_\_\_

I (SOUTHEAST CORNER)

Date Located: 6/20/19  
By: DEM MWH  
Monument Description: BRONZE MONUMENT  
Monument Witnesses: 1/2" REBAR W/CAP NW 34.52'  
PK NAIL IN CAP POWER POLE NNE 61.37'  
1/2" REBAR W/CAP SE 40.20'

Field Book: 15 Page: 11

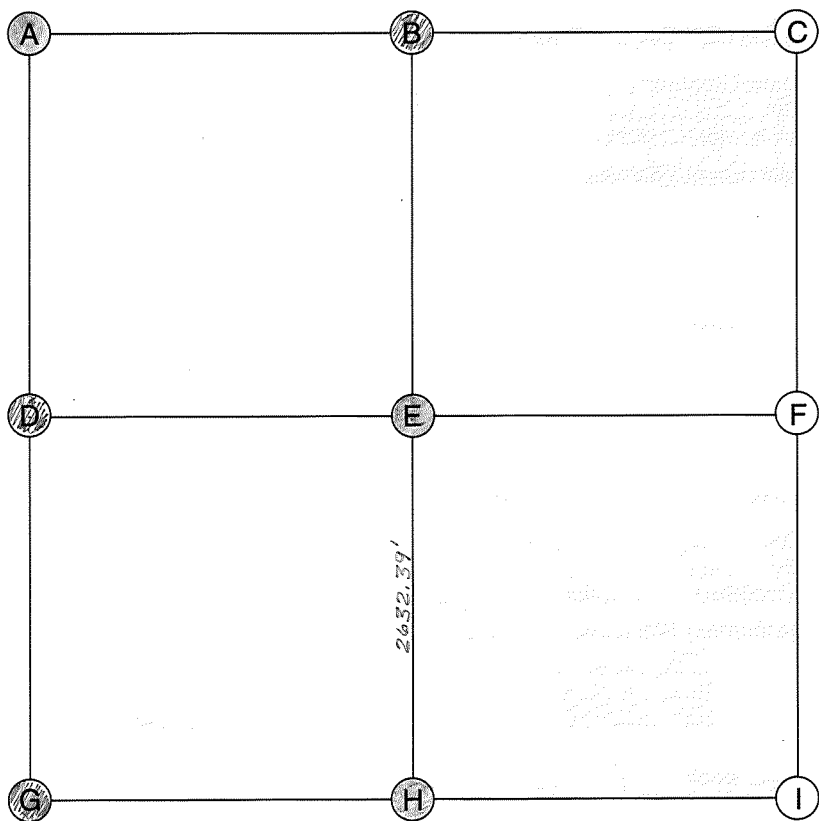
D (WEST QUARTER CORNER)

Date Located: \_\_\_\_\_  
By: \_\_\_\_\_  
Monument Description: \_\_\_\_\_  
Monument Witnesses: \_\_\_\_\_

Field Book: \_\_\_\_\_ Page: \_\_\_\_\_

ADDITIONAL NOTES





E (CENTER OF SECTION)  
Date Located: 3/2000 6/19/19 UPDATED  
By: M. KISSINGER SEM MWH  
Monument Description: BRONZE MARKER (PK FOUND, B.M. SET)  
Monument Witnesses: -FACE RIP 15.8'E  
-FACE RIP 15.8'W  
-PK IN W. FACE UTILITY POLE 51.0' N-NW  
Field Book: 15 Page: 7

F (EAST QUARTER CORNER)  
Date Located: \_\_\_\_\_  
By: \_\_\_\_\_  
Monument Description: \_\_\_\_\_  
Monument Witnesses: \_\_\_\_\_  
Field Book: \_\_\_\_\_ Page: \_\_\_\_\_

A (NORTHWEST CORNER)  
Date Located: \_\_\_\_\_  
By: \_\_\_\_\_  
Monument Description: \_\_\_\_\_  
Monument Witnesses: SEE PAGE 377 "C"  
NE COR 5-33-7  
Field Book: \_\_\_\_\_ Page: \_\_\_\_\_

G (SOUTHWEST CORNER)  
Date Located: 6/19/19  
By: SEM MWH  
Monument Description: FO 1/2" REBAR  
Monument Witnesses: SEE Pg 377 "I"  
Field Book: 15 Page: 5

B (NORTH QUARTER CORNER)  
Date Located: 6/20/19  
By: SEM MWH  
Monument Description: MAG NAIL  
Monument Witnesses: 1/2" REBAR W/CAP SW 32.26'  
NAIL IN B. CAP POWER POLE ENE 61.38'  
NAIL IN B. CAP POWER POLE SE 38.17'  
Field Book: 15 Page: 8

H (SOUTH QUARTER CORNER)  
Date Located: 3/2000 6/19/19 UPDATED  
By: M. KISSINGER SEM MWH  
Monument Description: RR SPIKE (PK FOUND, SPIKE SET)  
Monument Witnesses: 1/2" CAPED REBAR 27.56' SE  
1/2" CAPED REBAR 27.41' SW  
1/2" CAPED REBAR 24.82' NW  
8" ROUND STEEL POST 18.45' W  
Field Book: 15 Page: 6

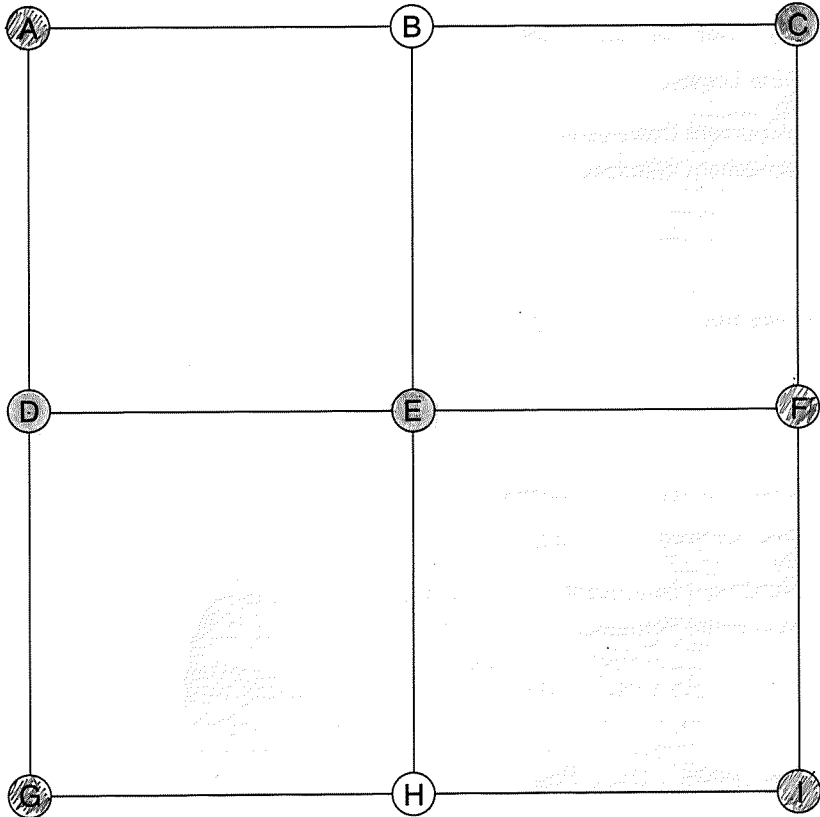
C (NORTHEAST CORNER)  
Date Located: \_\_\_\_\_  
By: \_\_\_\_\_  
Monument Description: \_\_\_\_\_  
Monument Witnesses: \_\_\_\_\_  
Field Book: \_\_\_\_\_ Page: \_\_\_\_\_

I (SOUTHEAST CORNER)  
Date Located: \_\_\_\_\_  
By: \_\_\_\_\_  
Monument Description: \_\_\_\_\_  
Monument Witnesses: \_\_\_\_\_  
Field Book: \_\_\_\_\_ Page: \_\_\_\_\_

D (WEST QUARTER CORNER)  
Date Located: 6/19/19  
By: SEM MWH  
Monument Description: RR SPIKE  
Monument Witnesses: SEE Pg 377 "F"  
Field Book: 15 Page: 4

ADDITIONAL NOTES





E (CENTER OF SECTION)

Date Located: 12/03  
By: RTK+MEK  
Monument Description: RIP  
Monument Witnesses: \_\_\_\_\_  
\_\_\_\_\_  
\_\_\_\_\_  
Field Book: \_\_\_\_\_ Page: \_\_\_\_\_

F (EAST QUARTER CORNER)

Date Located: 6/19/19  
By: SRM NWL  
Monument Description: RZ SPIKE  
Monument Witnesses: 1/2" REBAR w/CAP NW 20.64'  
w FACE RZ RAIL FCD E 16.5'  
1/2" REBAR w/CAP SW 23.53'  
\_\_\_\_\_  
Field Book: 15 Page: 4

A (NORTHWEST CORNER)

Date Located: 8/22/18  
By: SRM  
Monument Description: MAG NAIL w/CO TAG  
Monument Witnesses: SEE Pg 378 "C"  
\_\_\_\_\_  
\_\_\_\_\_  
Field Book: 10 Page: 74

G (SOUTHWEST CORNER)

Date Located: 8/22/16  
By: SRM  
Monument Description: MAG NAIL w/CO TAG  
Monument Witnesses: SEE Pg 380 "A"  
\_\_\_\_\_  
\_\_\_\_\_  
Field Book: 10 Page: 77

B (NORTH QUARTER CORNER)

Date Located: \_\_\_\_\_  
By: \_\_\_\_\_  
Monument Description: \_\_\_\_\_  
Monument Witnesses: \_\_\_\_\_  
\_\_\_\_\_  
\_\_\_\_\_  
Field Book: \_\_\_\_\_ Page: \_\_\_\_\_

H (SOUTH QUARTER CORNER)

Date Located: \_\_\_\_\_  
By: \_\_\_\_\_  
Monument Description: \_\_\_\_\_  
Monument Witnesses: \_\_\_\_\_  
\_\_\_\_\_  
\_\_\_\_\_  
Field Book: \_\_\_\_\_ Page: \_\_\_\_\_

C (NORTHEAST CORNER)

Date Located: 12/03 6/19/19  
By: RTK+MEK SRM  
Monument Description: PK NAIL MAG NAIL w/CO TAG  
Monument Witnesses: 1/2" REBAR w/CAP SW 30.75'  
"HUFFMAN" MAG NAIL E 2.93'  
1/2" REBAR w/CAP SE 37.71'  
\_\_\_\_\_  
Field Book: 15 Page: 1

I (SOUTHEAST CORNER)

Date Located: 6/19/19  
By: SRM NWL  
Monument Description: 1/2" REBAR  
Monument Witnesses: 1/2" REBAR w/CAP NW 23.60'  
1/2" REBAR w/CAP NE 25.95'  
1/2" REBAR w/CAP SW 32.91'  
\_\_\_\_\_  
Field Book: 15 Page: 5

D (WEST QUARTER CORNER)

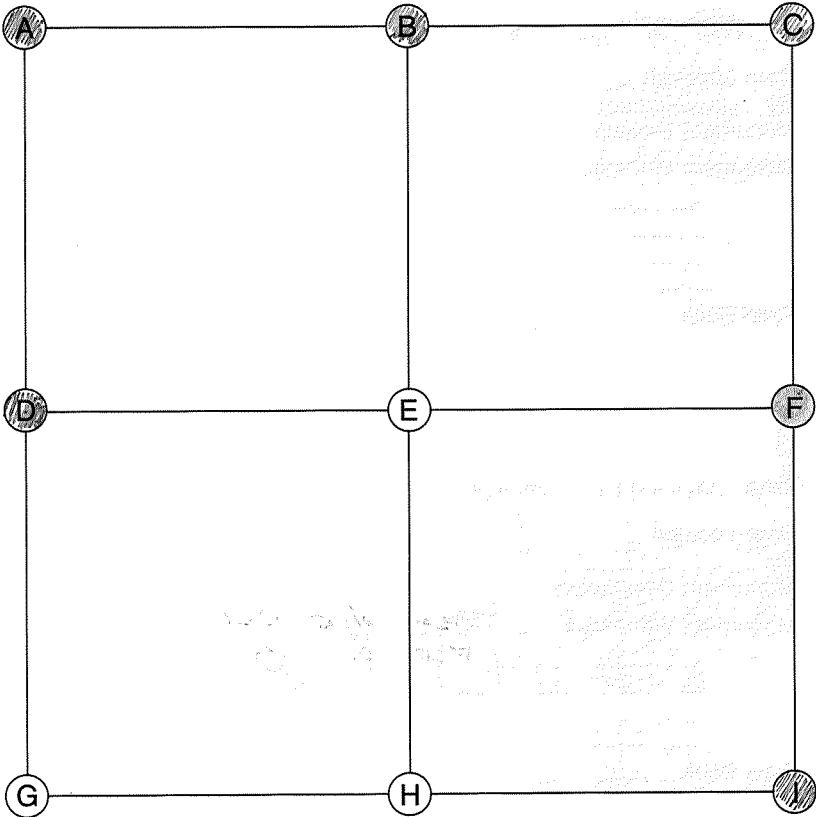
Date Located: 12/03  
By: RTK+MEK  
Monument Description: MAG NAIL  
Monument Witnesses: \_\_\_\_\_  
\_\_\_\_\_  
\_\_\_\_\_  
Field Book: 10 Page: 76

ADDITIONAL NOTES

\_\_\_\_\_  
\_\_\_\_\_  
\_\_\_\_\_  
\_\_\_\_\_  
\_\_\_\_\_  
\_\_\_\_\_  
\_\_\_\_\_  
\_\_\_\_\_  
\_\_\_\_\_  
\_\_\_\_\_



Tippecanoe  
6-33-7



A (NORTHWEST CORNER)

Date Located: 7/17/19  
By: SEM MNH  
Monument Description: CAPPED IRON  
Monument Witnesses: SEE Pg 242 "C"

Field Book: 15 Page: 60

B (NORTH QUARTER CORNER)

Date Located: 6/19/19  
By: SEM  
Monument Description: 5/8" REBAR  
Monument Witnesses: NAIL IN B. CAP P. POLE ENE 60.13  
1/2" REBAR W/CAP SE 15.42  
1/2" REBAR W/CAP SW 23.95

Field Book: 14 Page: 78

C (NORTHEAST CORNER)

Date Located: 8/22/18  
By: SEM  
Monument Description: MAG NAIL W/CO TAG  
Monument Witnesses: NAIL IN B. CAP POWER POLE SSW 69.87  
5/8" REBAR E 29.03  
NAIL IN B. CAP POWER POLE NW 43.11

Field Book: 10 Page: 74

D (WEST QUARTER CORNER)

Date Located: 6/3/16  
By: SR MOYER  
Monument Description: FO RR SPIKE 2" DEEP  
Monument Witnesses: NAIL IN B. CAP IN P. POLE NW 33.30  
NAIL IN B. CAP IN P. POLE NNE 59.00  
NAIL IN B. CAP IN P. POLE WSW 73.66

Field Book: 3 Page: 74

E (CENTER OF SECTION)

Date Located: \_\_\_\_\_  
By: \_\_\_\_\_  
Monument Description: \_\_\_\_\_  
Monument Witnesses: \_\_\_\_\_

Field Book: \_\_\_\_\_ Page: \_\_\_\_\_

F (EAST QUARTER CORNER)

Date Located: 8/22/18  
By: SEM  
Monument Description: MAG NAIL  
Monument Witnesses: 4 RR RAIL FCP W 18.38  
1/2" REBAR W/CAP SE 31.16  
NAIL IN B. CAP POWER POLE SSW 69.38

Field Book: 10 Page: 76

G (SOUTHWEST CORNER)

Date Located: \_\_\_\_\_  
By: \_\_\_\_\_  
Monument Description: \_\_\_\_\_  
Monument Witnesses: \_\_\_\_\_

Field Book: \_\_\_\_\_ Page: \_\_\_\_\_

H (SOUTH QUARTER CORNER)

Date Located: \_\_\_\_\_  
By: \_\_\_\_\_  
Monument Description: \_\_\_\_\_  
Monument Witnesses: \_\_\_\_\_

Field Book: \_\_\_\_\_ Page: \_\_\_\_\_

I (SOUTHEAST CORNER)

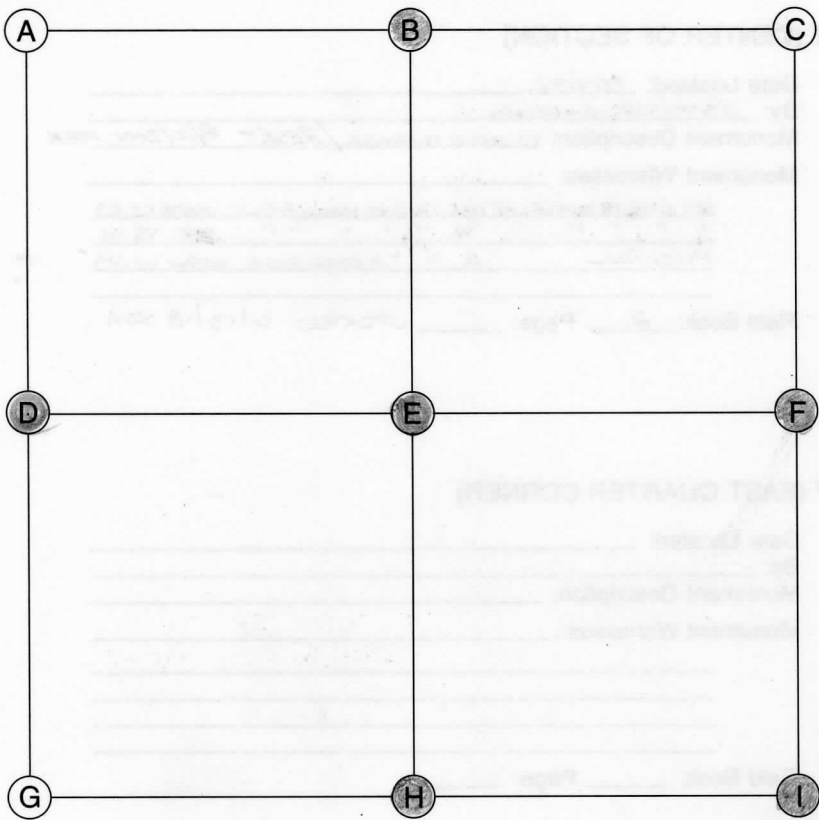
Date Located: 8/22/18  
By: SEM  
Monument Description: MAG NAIL W/CO TAG  
Monument Witnesses: SEE Pg 380 "A"

Field Book: 10 Page: 77

ADDITIONAL NOTES







## E (CENTER OF SECTION)

Date Located: 7/14/92  
 By: JA MOYER - EL HAINES  
 Monument Description: BRONZE MARKER  
 Monument Witnesses: SW FACE OF A RR RAIL FCP NE 38.30 ✓  
SET NAIL IN BOTTLE CAP IN NE FACE OF P.P. SE 24.97 ✓  
CENTER OF A RR RAIL FCP S 20.42 ✓  
 Field Book: 2 Page: 2 UPDATED 6/13/18 SRM

## F (EAST QUARTER CORNER)

Date Located: \_\_\_\_\_  
 By: \_\_\_\_\_  
 Monument Description: SEE PAGE 382 "D"  
 Monument Witnesses: W 1/4 POST 10-33-7  
 Field Book: \_\_\_\_\_ Page: \_\_\_\_\_

## A (NORTHWEST CORNER)

Date Located: \_\_\_\_\_  
 By: \_\_\_\_\_  
 Monument Description: \_\_\_\_\_  
 Monument Witnesses: \_\_\_\_\_  
 Field Book: \_\_\_\_\_ Page: \_\_\_\_\_

## G (SOUTHWEST CORNER)

Date Located: \_\_\_\_\_  
 By: \_\_\_\_\_  
 Monument Description: \_\_\_\_\_  
 Monument Witnesses: \_\_\_\_\_  
 Field Book: \_\_\_\_\_ Page: \_\_\_\_\_

## B (NORTH QUARTER CORNER)

Date Located: \_\_\_\_\_  
 By: \_\_\_\_\_  
 Monument Description: \_\_\_\_\_  
 Monument Witnesses: SEE PAGE 376 "H"  
S 1/4 POST 4-33-7  
 Field Book: \_\_\_\_\_ Page: \_\_\_\_\_

## H (SOUTH QUARTER CORNER)

Date Located: \_\_\_\_\_  
 By: \_\_\_\_\_  
 Monument Description: \_\_\_\_\_  
 Monument Witnesses: SEE PAGE 388 "B"  
N 1/4 POST 16-33-7  
 Field Book: \_\_\_\_\_ Page: \_\_\_\_\_

## C (NORTHEAST CORNER)

Date Located: \_\_\_\_\_  
 By: \_\_\_\_\_  
 Monument Description: \_\_\_\_\_  
 Monument Witnesses: \_\_\_\_\_  
 Field Book: \_\_\_\_\_ Page: \_\_\_\_\_

## I (SOUTHEAST CORNER)

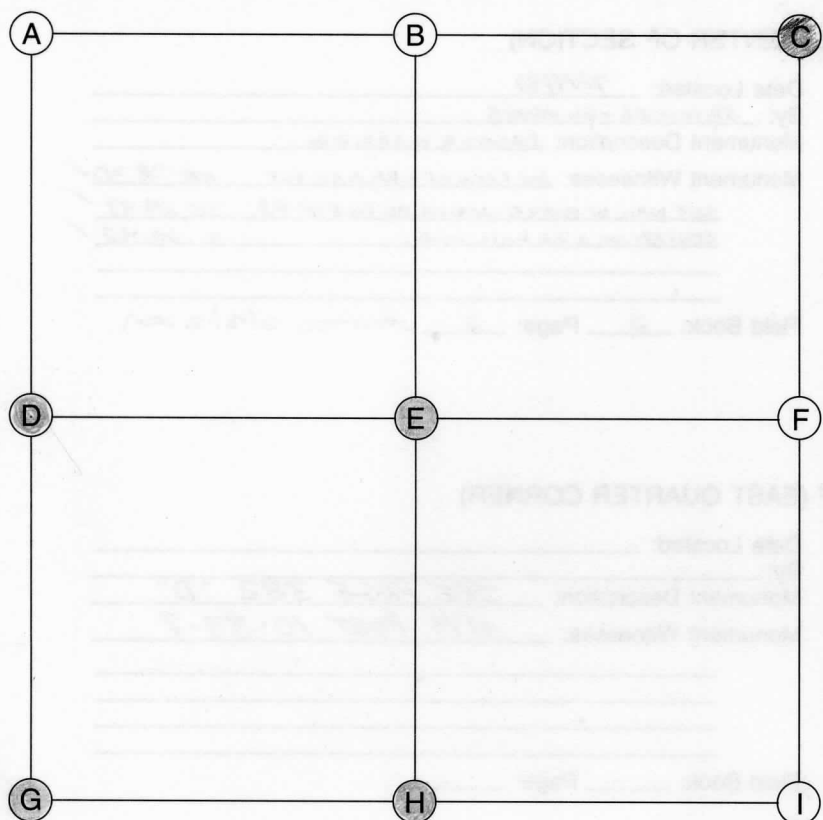
Date Located: \_\_\_\_\_  
 By: \_\_\_\_\_  
 Monument Description: SEE PAGE 382 "G"  
 Monument Witnesses: SW COR. 10-33-7  
 Field Book: \_\_\_\_\_ Page: \_\_\_\_\_

## D (WEST QUARTER CORNER)

Date Located: 7/15/92  
 By: JA MOYER - EL HAINES  
 Monument Description: RR SPIKE  
 Monument Witnesses: SOUTH FACE OF A RR RAIL FCP NNE 45.0  
WEST FACE OF A RR RAIL FCP ENE 42.28  
SET NAIL IN BOTTLE CAP IN NW FACE OF A P.P. SW 21.03  
1/2" REBAR W/ CAP NNW 49.98  
 Field Book: 2 Page: 3 UPDATED 6/13/18 SRM

## ADDITIONAL NOTES





## E (CENTER OF SECTION)

Date Located: 7/14/92  
By: JR MOYER - ECHAINES  
Monument Description: Bronze Marker / RESET 8/10/2001 MEK  
Monument Witnesses: \_\_\_\_\_  
SET NAIL IN BOTTLE CAP IN S. FACE OF NIPSCO PIPE ENCL 65.63  
" " " " " " " " " " " " " " SSE 48.91  
MAG NAIL " " " " " " " " " " " " " " WSW 60.45  
\_\_\_\_\_

F (EAST QUARTER CORNER)

Date Located: \_\_\_\_\_  
By: \_\_\_\_\_  
Monument Description: \_\_\_\_\_  
Monument Witnesses: \_\_\_\_\_  
\_\_\_\_\_  
\_\_\_\_\_  
\_\_\_\_\_

## Field Book: \_\_\_\_\_ Page: \_\_\_\_\_

(SOUTHWEST CORNER)

Date Located: 7-15-92 \*UPDATE\* 6/17/02 1

By: J.R. MOVER - EC HAINES ML+ED ✓

Monument Description: RR SPK REMOVED SPK SET BRN

Monument Witnesses: CENTER 4" DIA. STEEL GATE POST NE 3

CENTER OF A RID FCP SE 19.48

SET NAIL IN BOTTLE CAP IN NW FACE OF

NIPSCO P. POLE SW 15.71

Field Book: 2 Page: 4 UPDATED 6/13/18 JRM

G (SOUTHWEST CORNER)

Date Located: 7-15-92 \*UPDATE\* 6/17/02  
By: J.R. MOVER - EC HAWES ML+ED  
Monument Description: RR SPK REMOVED SPK SET BRONZE MARKER  
Monument Witnesses: CENTER 4" DIA. STEEL GATE POST NE 31.17'  
CENTER OF A RID FCP SE 19.48'  
SET NAIL IN BOTTLE CAP IN NW FACE OF  
NIPSCO P.POLE SW 15.77'

Field Book: 2 Page: 4 UPDATED 6/13/18 JRM

## H (SOUTH QUARTER CORNER)

Date Located: \_\_\_\_\_  
By: JRM, ECH, MEK  
Monument Description: BRONZE MIRROR  
Monument Witnesses: 1/2" CAPPED IRON REBAR 35.24' NW  
" " " " 44.02' SW  
" " " " 48.55' SE  
ADDITIONAL WITNESSES LISTED IN FIELD BK.

Field Book: 2 Page: 1

I (SOUTHEAST CORNER)

Date Located: \_\_\_\_\_  
By: \_\_\_\_\_  
Monument Description: \_\_\_\_\_  
Monument Witnesses: \_\_\_\_\_  
\_\_\_\_\_  
\_\_\_\_\_  
\_\_\_\_\_

Field Book: \_\_\_\_\_ Page: \_\_\_\_\_

### ADDITIONAL NOTES

[illegible]

A (NORTHWEST CORNER)

Date Located: \_\_\_\_\_  
By: \_\_\_\_\_  
Monument Description: \_\_\_\_\_  
Monument Witnesses: \_\_\_\_\_  
\_\_\_\_\_  
\_\_\_\_\_  
\_\_\_\_\_

Field Book: \_\_\_\_\_ Page: \_\_\_\_\_

B (NORTH QUARTER CORNER)

Date Located: \_\_\_\_\_  
By: \_\_\_\_\_  
Monument Description: \_\_\_\_\_  
Monument Witnesses: \_\_\_\_\_  
\_\_\_\_\_  
\_\_\_\_\_  
\_\_\_\_\_

Field Book: \_\_\_\_\_ Page: \_\_\_\_\_

C (NORTHEAST CORNER)

Date Located: SEE P374 "G"  
By: \_\_\_\_\_  
Monument Description: SW COR. 2-33-7  
Monument Witnesses: \_\_\_\_\_  
\_\_\_\_\_  
\_\_\_\_\_  
\_\_\_\_\_

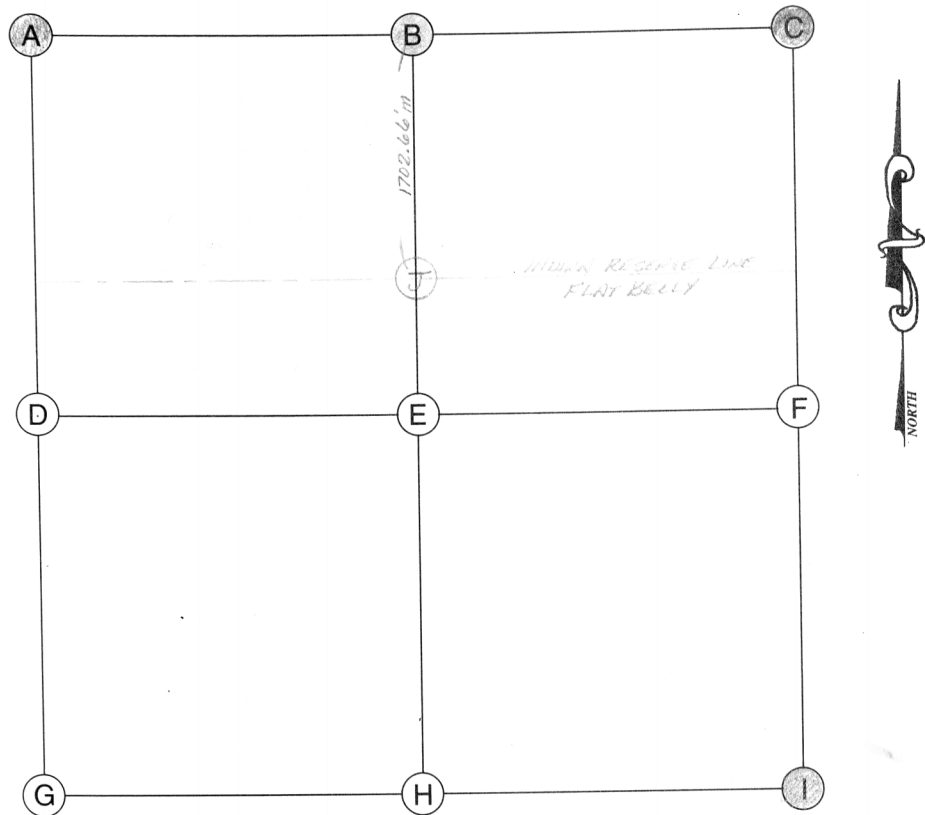
Field Book: \_\_\_\_\_ Page: \_\_\_\_\_

## D (WEST QUARTER CORNER)

Date Located: 7/14/93  
By: JR MONGA - EC HAINES  
Monument Description: PK NAIL (6/01 - REPLACED NAIL W/ RAILROAD SPK)  
Monument Witnesses: CENTER OF RR RAIL FLD NW 24.40  
SET NAIL IN BOTTLE CAP IN N FACE OF P POLE ESE 97.55  
6/01 NEW REF - 1/2" I. RERNR S-SW 35.27'  
" " NW 30.64'  
" " NE 31.6'

Field Book: 2 Page: 2 UPDATED 6/13/18 JEM

*Tippecanoe*  
11-33-7



## A (NORTHWEST CORNER)

Date Located: \_\_\_\_\_  
By: \_\_\_\_\_  
Monument Description: \_\_\_\_\_  
Monument Witnesses: SEE PAGE 374 "G"  
SW COR. 2-33-7

Field Book: \_\_\_\_\_ Page: \_\_\_\_\_

## B (NORTH QUARTER CORNER)

Date Located: 12/8/96  
By: RTM + MEK  
Monument Description: 3/8" IRON PIPE (SMOOTHER PIPE INSIDE)  
Monument Witnesses: \_\_\_\_\_  
PK NAIL E. FIRE UTILITY POLE 19.15' S-SE  
PK NAIL NW POLE " " 9.75' NE  
1/2" REBAR W/ YELLOW PLASTIC W/ YELLOW CAP 68.38' NW  
" " " " " " 42.40' NE

Field Book: \_\_\_\_\_ Page: \_\_\_\_\_ \*NOTE\* 3/4" REBAR FOUND  
7.25' EAST + 3.5'  
NORTH (S.S. NE)

## C (NORTHEAST CORNER)

Date Located: \_\_\_\_\_  
By: \_\_\_\_\_  
Monument Description: \_\_\_\_\_  
Monument Witnesses: SEE PAGE 373 "G"  
SW COR. 1-33-7

Field Book: \_\_\_\_\_ Page: \_\_\_\_\_

## D (WEST QUARTER CORNER)

Date Located: \_\_\_\_\_  
By: \_\_\_\_\_  
Monument Description: \_\_\_\_\_  
Monument Witnesses: \_\_\_\_\_

Field Book: \_\_\_\_\_ Page: \_\_\_\_\_

## E (CENTER OF SECTION)

Date Located: \_\_\_\_\_  
By: \_\_\_\_\_  
Monument Description: \_\_\_\_\_  
Monument Witnesses: \_\_\_\_\_

Field Book: \_\_\_\_\_ Page: \_\_\_\_\_

## F (EAST QUARTER CORNER)

Date Located: \_\_\_\_\_  
By: \_\_\_\_\_  
Monument Description: \_\_\_\_\_  
Monument Witnesses: \_\_\_\_\_

Field Book: \_\_\_\_\_ Page: \_\_\_\_\_

## G (SOUTHWEST CORNER)

Date Located: \_\_\_\_\_  
By: \_\_\_\_\_  
Monument Description: \_\_\_\_\_  
Monument Witnesses: \_\_\_\_\_

Field Book: \_\_\_\_\_ Page: \_\_\_\_\_

## H (SOUTH QUARTER CORNER)

Date Located: \_\_\_\_\_  
By: \_\_\_\_\_  
Monument Description: \_\_\_\_\_  
Monument Witnesses: \_\_\_\_\_

Field Book: \_\_\_\_\_ Page: \_\_\_\_\_

## I (SOUTHEAST CORNER)

Date Located: \_\_\_\_\_  
By: \_\_\_\_\_  
Monument Description: \_\_\_\_\_  
Monument Witnesses: SEE PAGE 384 "G"  
SW COR. 12-33-7

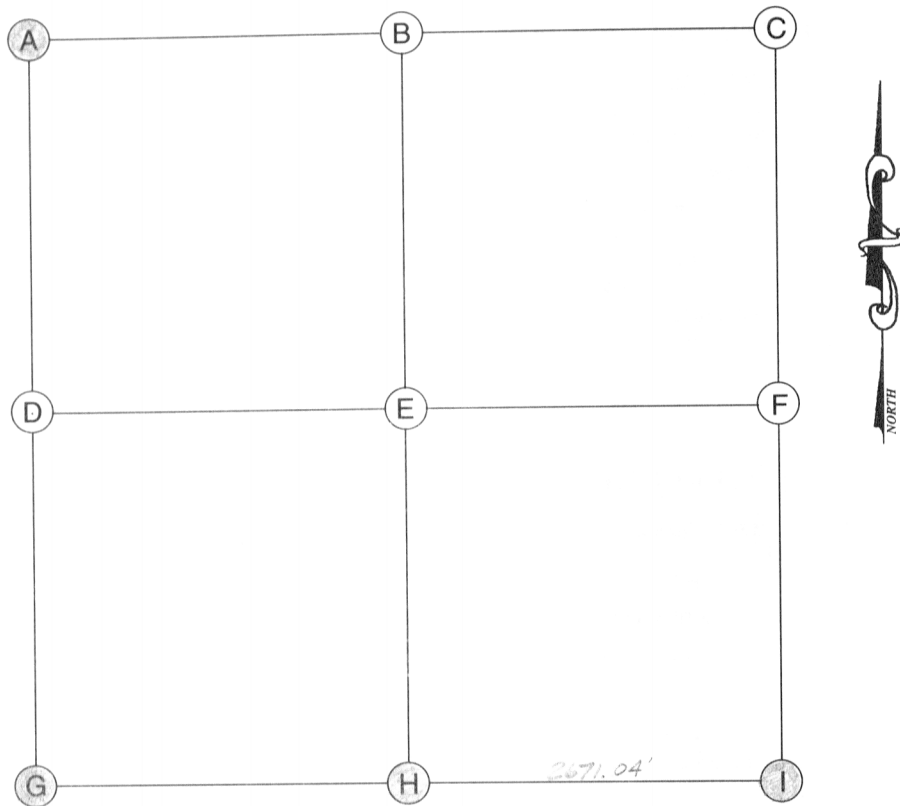
Field Book: \_\_\_\_\_ Page: \_\_\_\_\_

## ADDITIONAL NOTES

INTERSECTION OF OPEN LINE SEC. 11-33-7 + SOUTH LINE  
OF FLAT BELLY RESERVE LINE  
MONUMENT: 1" SOLID IRON PIPE



*Tippecanoe*  
12-33-7



## A (NORTHWEST CORNER)

Date Located: \_\_\_\_\_  
By: \_\_\_\_\_  
Monument Description: \_\_\_\_\_  
Monument Witnesses: SEE PAGE 373 "G"  
SW COR. 1-33-7

Field Book: \_\_\_\_\_ Page: \_\_\_\_\_

## B (NORTH QUARTER CORNER)

Date Located: \_\_\_\_\_  
By: \_\_\_\_\_  
Monument Description: \_\_\_\_\_  
Monument Witnesses: \_\_\_\_\_

Field Book: \_\_\_\_\_ Page: \_\_\_\_\_

## C (NORTHEAST CORNER)

Date Located: \_\_\_\_\_  
By: \_\_\_\_\_  
Monument Description: \_\_\_\_\_  
Monument Witnesses: \_\_\_\_\_

Field Book: \_\_\_\_\_ Page: \_\_\_\_\_

## D (WEST QUARTER CORNER)

Date Located: \_\_\_\_\_  
By: \_\_\_\_\_  
Monument Description: \_\_\_\_\_  
Monument Witnesses: \_\_\_\_\_

Field Book: \_\_\_\_\_ Page: \_\_\_\_\_

## E (CENTER OF SECTION)

Date Located: \_\_\_\_\_  
By: \_\_\_\_\_  
Monument Description: \_\_\_\_\_  
Monument Witnesses: \_\_\_\_\_

Field Book: \_\_\_\_\_ Page: \_\_\_\_\_

## F (EAST QUARTER CORNER)

Date Located: \_\_\_\_\_  
By: \_\_\_\_\_  
Monument Description: \_\_\_\_\_  
Monument Witnesses: \_\_\_\_\_

Field Book: \_\_\_\_\_ Page: \_\_\_\_\_

## G (SOUTHWEST CORNER)

Date Located: 8/1/96  
By: JOHN L. HENK  
Monument Description: 3 1/2" SQUARE CONC. POST W/ 1/2" REBAR  
Monument Witnesses: END OF CONC. RETAINING WALL 29.6'E  
END OF 6"X6" TIMBER RETAINING WALL 7.07' N 2.91' NW  
JOINT OF " " " "

Field Book: \_\_\_\_\_ Page: \_\_\_\_\_

## H (SOUTH QUARTER CORNER)

Date Located: 2/10/97  
By: JOHN L. HENK  
Monument Description: RAILROAD SPIKE (RR SPK)  
Monument Witnesses: NAIL IN BOTTLE CAP IN E. FACE NIPSCO POLE 634/956 58.55' N-NW  
PC NAIL W. FACE UTILITY POLE 28.79' NE  
RR SPK IN N. FACE NIPSCO POLE 610/803 44.40' SW  
PC NAIL IN W. FACE NIPSCO POLE 631/583 60.82' E-SE

Field Book: \_\_\_\_\_ Page: \_\_\_\_\_

## I (SOUTHEAST CORNER)

Date Located: \_\_\_\_\_  
By: \_\_\_\_\_  
Monument Description: SEE PAGE 385 "C"  
Monument Witnesses: NE COR. 13-33-7

Field Book: \_\_\_\_\_ Page: \_\_\_\_\_

## ADDITIONAL NOTES





Date Located: \_\_\_\_\_  
By: \_\_\_\_\_  
Monument Description: \_\_\_\_\_  
Monument Witnesses: \_\_\_\_\_  
\_\_\_\_\_  
\_\_\_\_\_  
\_\_\_\_\_

Date Located: 8/18/92  
By: JA MOYER - EC HAINES  
Monument Description: REBAR  
Monument Witnesses: SET 1/2" x 30" REBAR W/ CAP SSW 36.89  
SET 1/2" x 30" REBAR W/ CAP SSW 36.50

Date Located: \_\_\_\_\_  
By: \_\_\_\_\_  
Monument Description: \_\_\_\_\_  
Monument Witnesses: SEE PAGE 384 "G"  
SW 14 12-33-7  
\_\_\_\_\_  
\_\_\_\_\_  
\_\_\_\_\_

Date Located: 3/19/15 M. KISSINGER  
By: \_\_\_\_\_  
Monument Description: SEE PAGE 386 "I"  
Monument Witnesses: SECOR 14-33-7  
\_\_\_\_\_  
\_\_\_\_\_  
\_\_\_\_\_

Date Located: 2/10/97 5/30/19  
By: SRM MWH  
Monument Description: RAILROAD SPIKE  
Monument Witnesses: - SEE PAGE 384 "H"  
5/4 POST 12-33-7

Date Located: \_\_\_\_\_  
By: \_\_\_\_\_  
Monument Description: \_\_\_\_\_  
Monument Witnesses: \_\_\_\_\_  
\_\_\_\_\_  
\_\_\_\_\_  
\_\_\_\_\_

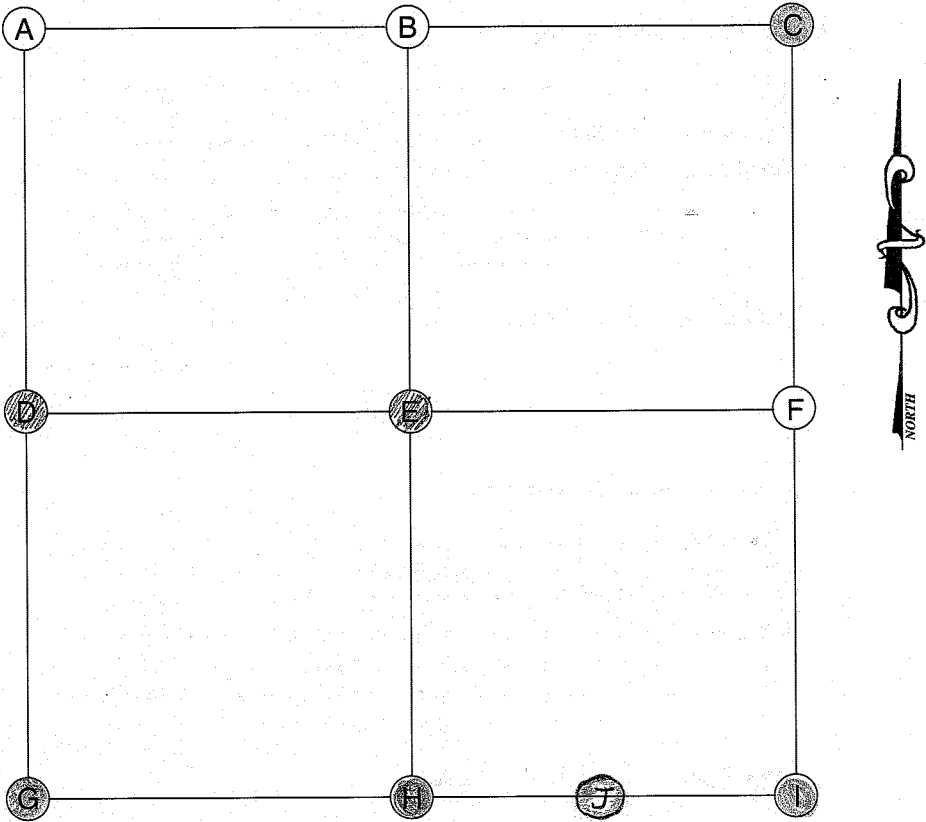
Date Located: 8/18/92 - 2197  
By: JAMoyer-ELCHAINES  
Monument Description: PHNAL OVER HARRISON MARKET  
Monument Witnesses:  
SET NAIL IN BOTTLE CAP IN E. FACE OF PP WNW 20 28  
" " " " " " " PHONE SSW 45.40

Date Located: \_\_\_\_\_  
By: \_\_\_\_\_  
Monument Description: \_\_\_\_\_  
Monument Witnesses: SEE PAGE 396 "C"  
NE COR. 24-33-7

Date Located: \_\_\_\_\_  
By: \_\_\_\_\_  
Monument Description: \_\_\_\_\_  
Monument Witnesses: \_\_\_\_\_  
\_\_\_\_\_  
\_\_\_\_\_  
\_\_\_\_\_

[illegible]

Tipppecanoe  
14-33-7



A (NORTHWEST CORNER)

Date Located: \_\_\_\_\_  
By: \_\_\_\_\_  
Monument Description: \_\_\_\_\_  
Monument Witnesses: \_\_\_\_\_  
\_\_\_\_\_  
\_\_\_\_\_

Field Book: \_\_\_\_\_ Page: \_\_\_\_\_

B (NORTH QUARTER CORNER)

Date Located: \_\_\_\_\_  
By: \_\_\_\_\_  
Monument Description: \_\_\_\_\_  
Monument Witnesses: \_\_\_\_\_  
\_\_\_\_\_  
\_\_\_\_\_

Field Book: \_\_\_\_\_ Page: \_\_\_\_\_

C (NORTHEAST CORNER)

Date Located: \_\_\_\_\_  
By: \_\_\_\_\_  
Monument Description: \_\_\_\_\_  
Monument Witnesses: SEE PAGE 384 "G"  
SW COR. 12-33-7  
\_\_\_\_\_  
\_\_\_\_\_

Field Book: \_\_\_\_\_ Page: \_\_\_\_\_

D (WEST QUARTER CORNER)

Date Located: 6/5/19  
By: SEM MWH  
Monument Description: RR SPIKE  
Monument Witnesses: NAIL IN B. CAP NIPSCO POLE NNE 22.89'  
NAIL IN B. CAP NIPSCO POLE ESE 58.78'  
1/2" REBAR W/ CAP SW 45.74'  
\_\_\_\_\_  
\_\_\_\_\_

Field Book: 14 Page: 56

E (CENTER OF SECTION)

Date Located: 6/5/19  
By: SEM MWH  
Monument Description: BRONZE MONUMENT  
Monument Witnesses: 1/2" REBAR W/ CAP NE 29.75'  
1/2" REBAR W/ CAP SE 32.07'  
NAIL IN B. CAP NIPSCO POLE SW 35.97'  
\_\_\_\_\_  
\_\_\_\_\_

Field Book: 14 Page: 57

F (EAST QUARTER CORNER)

Date Located: \_\_\_\_\_  
By: \_\_\_\_\_  
Monument Description: \_\_\_\_\_  
Monument Witnesses: \_\_\_\_\_  
\_\_\_\_\_  
\_\_\_\_\_

Field Book: \_\_\_\_\_ Page: \_\_\_\_\_

G (SOUTHWEST CORNER)

Date Located: \_\_\_\_\_  
By: \_\_\_\_\_  
Monument Description: \_\_\_\_\_  
Monument Witnesses: SEE PAGE 394 "C"  
NE COR. 22-33-7  
\_\_\_\_\_  
\_\_\_\_\_

Field Book: 14 Page: 46

H (SOUTH QUARTER CORNER)

Date Located: 7/19/95  
By: REMPER - M KISSINGER  
Monument Description: BRONZE MARKER  
Monument Witnesses: PK NAIL SE FACE POWER POLE NW 40.25'  
FACE RD SIGN POST SW 41.05'  
RAIL ROAD IRON POST (FACE) SE 33.63'  
\_\_\_\_\_  
\_\_\_\_\_

Field Book: 2 Page: 68 UPDATED 5/29/19  
SEM MWH

I (SOUTHEAST CORNER)

Date Located: 7/19/95  
By: REMPER - M KISSINGER  
Monument Description: HARRISON MONUMENT OVER STONE  
Monument Witnesses: RR SPIKE IN E of PAV SSE 20.14'  
1/2" REBAR W/ CAP NE 42.85'  
1/2" REBAR W/ CAP ESE 29.75'  
1/2" REBAR W/ CAP SW 64.24'  
\_\_\_\_\_  
\_\_\_\_\_

Field Book: 2 Page: 69 UPDATED 3/19/15 M. KISSINGER  
FO STONE

ADDITIONAL NOTES

Ⓜ RAILROAD SPIKE  
- PK NAIL IN N. FACE OF POWER POLE 19.28' S  
- " " " S. " " 48.80' N  
- PK NAIL FOUND 0.4'S \* 0.68' W  
E.B. 2 PAGE 68  
\_\_\_\_\_  
\_\_\_\_\_  
\_\_\_\_\_  
\_\_\_\_\_  
\_\_\_\_\_  
\_\_\_\_\_



Date Located: \_\_\_\_\_  
By: \_\_\_\_\_  
Monument Description: \_\_\_\_\_  
Monument Witnesses: \_\_\_\_\_  
\_\_\_\_\_  
\_\_\_\_\_  
\_\_\_\_\_  
\_\_\_\_\_

Field Book: \_\_\_\_\_ Page: \_\_\_\_\_

Date Located: \_\_\_\_\_  
By: \_\_\_\_\_  
Monument Description: \_\_\_\_\_  
Monument Witnesses: \_\_\_\_\_  
\_\_\_\_\_  
\_\_\_\_\_  
\_\_\_\_\_  
\_\_\_\_\_  
Field Book: \_\_\_\_\_ Page: \_\_\_\_\_

Date Located: \_\_\_\_\_  
By: \_\_\_\_\_  
Monument Description: SEE PAGE 382 "G"  
Monument Witnesses: SW COR. 10-33-7  
\_\_\_\_\_  
\_\_\_\_\_  
\_\_\_\_\_  
\_\_\_\_\_  
Field Book: \_\_\_\_\_ Page: \_\_\_\_\_

Date Located: \_\_\_\_\_  
By: \_\_\_\_\_  
Monument Description: \_\_\_\_\_  
Monument Witnesses: \_\_\_\_\_  
\_\_\_\_\_  
\_\_\_\_\_  
\_\_\_\_\_  
\_\_\_\_\_

Field Book: \_\_\_\_\_ Page: \_\_\_\_\_

Date Located: 7/14/92  
By: JA MOYER - EC HAINES  
Monument Description: PROMISE MARKER HARRISON MONUMENT  
Monument Witnesses: CENTER OF ABEE HIVE STORM SOWER GRATE NE 2005  
FDNAL IN BOTTLE CAP IN SW. FACE OF UPRAID LIGHT POLE NW 24.51  
" " " " " SE " " " POWER POLE SW 24.58  
ADDITIONAL WITNESSES LISTED IN FIELD BK.  
Field Book: 2 Page: 1 UPDATED 6/13/18

Date Located: \_\_\_\_\_  
By: \_\_\_\_\_  
Monument Description: \_\_\_\_\_  
Monument Witnesses: \_\_\_\_\_  
\_\_\_\_\_  
\_\_\_\_\_  
\_\_\_\_\_  
\_\_\_\_\_

Field Book: \_\_\_\_\_ Page: \_\_\_\_\_

Date Located: \_\_\_\_\_  
By: \_\_\_\_\_  
Monument Description: \_\_\_\_\_  
Monument Witnesses: \_\_\_\_\_  
\_\_\_\_\_  
\_\_\_\_\_  
\_\_\_\_\_  
\_\_\_\_\_  
Field Book: \_\_\_\_\_ Page: \_\_\_\_\_

Date Located: \_\_\_\_\_  
By: \_\_\_\_\_  
Monument Description: \_\_\_\_\_  
Monument Witnesses: SEE PAGE 394 "C"  
NE COR. 22-33-7  
\_\_\_\_\_  
\_\_\_\_\_  
\_\_\_\_\_  
\_\_\_\_\_  
Field Book: \_\_\_\_\_ Page: \_\_\_\_\_

Date Located: \_\_\_\_\_  
By: \_\_\_\_\_  
Monument Description: \_\_\_\_\_  
Monument Witnesses: \_\_\_\_\_  
\_\_\_\_\_  
\_\_\_\_\_  
\_\_\_\_\_  
\_\_\_\_\_

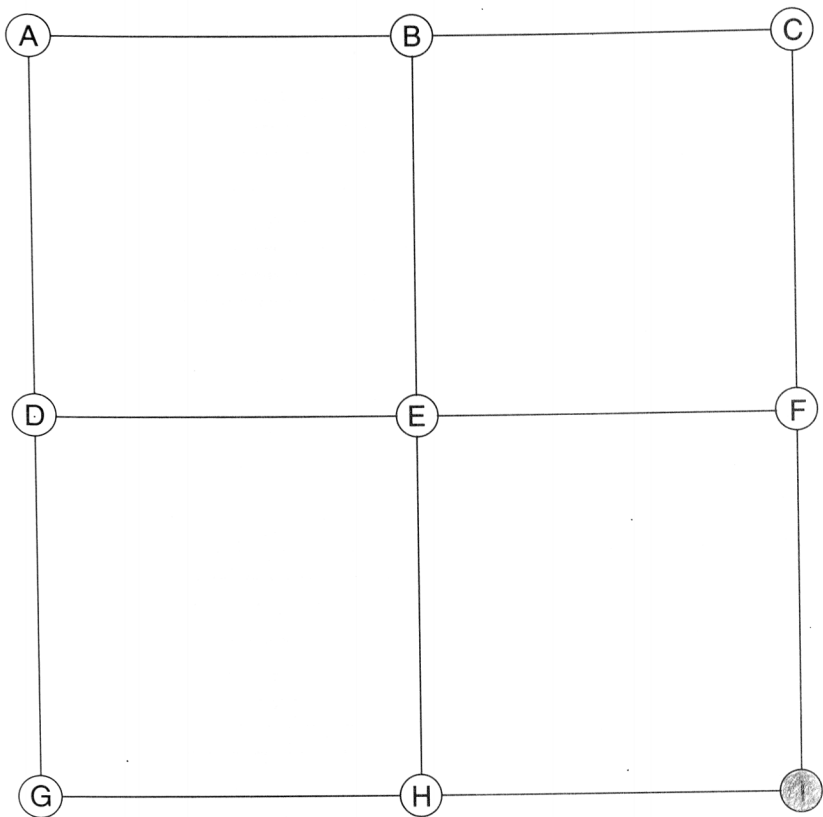
Field Book: \_\_\_\_\_ Page: \_\_\_\_\_

[illegible]





### ADDITIONAL NOTES



## A (NORTHWEST CORNER)

Date Located: \_\_\_\_\_  
 By: \_\_\_\_\_  
 Monument Description: \_\_\_\_\_  
 Monument Witnesses: \_\_\_\_\_

Field Book: \_\_\_\_\_ Page: \_\_\_\_\_

## B (NORTH QUARTER CORNER)

Date Located: \_\_\_\_\_  
 By: \_\_\_\_\_  
 Monument Description: \_\_\_\_\_  
 Monument Witnesses: \_\_\_\_\_

Field Book: \_\_\_\_\_ Page: \_\_\_\_\_

## C (NORTHEAST CORNER)

Date Located: \_\_\_\_\_  
 By: \_\_\_\_\_  
 Monument Description: \_\_\_\_\_  
 Monument Witnesses: \_\_\_\_\_

Field Book: \_\_\_\_\_ Page: \_\_\_\_\_

## D (WEST QUARTER CORNER)

Date Located: \_\_\_\_\_  
 By: \_\_\_\_\_  
 Monument Description: \_\_\_\_\_  
 Monument Witnesses: \_\_\_\_\_

Field Book: \_\_\_\_\_ Page: \_\_\_\_\_

## E (CENTER OF SECTION)

Date Located: \_\_\_\_\_  
 By: \_\_\_\_\_  
 Monument Description: \_\_\_\_\_  
 Monument Witnesses: \_\_\_\_\_

Field Book: \_\_\_\_\_ Page: \_\_\_\_\_

## F (EAST QUARTER CORNER)

Date Located: \_\_\_\_\_  
 By: \_\_\_\_\_  
 Monument Description: \_\_\_\_\_  
 Monument Witnesses: \_\_\_\_\_

Field Book: \_\_\_\_\_ Page: \_\_\_\_\_

## G (SOUTHWEST CORNER)

Date Located: \_\_\_\_\_  
 By: \_\_\_\_\_  
 Monument Description: \_\_\_\_\_  
 Monument Witnesses: \_\_\_\_\_

Field Book: \_\_\_\_\_ Page: \_\_\_\_\_

## H (SOUTH QUARTER CORNER)

Date Located: \_\_\_\_\_  
 By: \_\_\_\_\_  
 Monument Description: \_\_\_\_\_  
 Monument Witnesses: \_\_\_\_\_

Field Book: \_\_\_\_\_ Page: \_\_\_\_\_

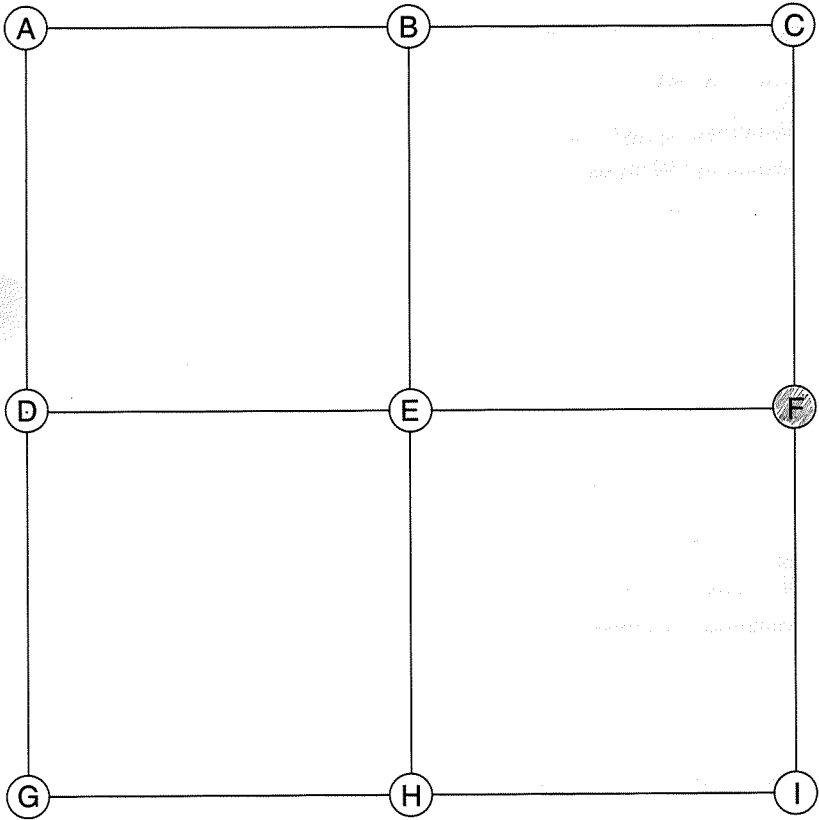
## I (SOUTHEAST CORNER)

Date Located: \_\_\_\_\_  
 By: \_\_\_\_\_  
 Monument Description: \_\_\_\_\_  
 Monument Witnesses: SEE PAGE 392 "C"  
NE COR. 20-33-7

Field Book: \_\_\_\_\_ Page: \_\_\_\_\_

## ADDITIONAL NOTES

\_\_\_\_\_  
 \_\_\_\_\_  
 \_\_\_\_\_  
 \_\_\_\_\_  
 \_\_\_\_\_  
 \_\_\_\_\_  
 \_\_\_\_\_  
 \_\_\_\_\_  
 \_\_\_\_\_  
 \_\_\_\_\_



E (CENTER OF SECTION)

Date Located: \_\_\_\_\_  
By: \_\_\_\_\_  
Monument Description: \_\_\_\_\_  
Monument Witnesses: \_\_\_\_\_  
\_\_\_\_\_

Field Book: \_\_\_\_\_ Page: \_\_\_\_\_

F (EAST QUARTER CORNER)

Date Located: 6/19/19  
By: JRM  
Monument Description: "KIMPEL" CAPPED IRON  
Monument Witnesses: 1/2" REBAR w/CAP SW 19.53'  
NAIL IN B. CAP POWER POLE SSW 6.91'  
1/2" REBAR w/CAP SE 24.12'

Field Book: 14 Page: 77

A (NORTHWEST CORNER)

Date Located: \_\_\_\_\_  
By: \_\_\_\_\_  
Monument Description: \_\_\_\_\_  
Monument Witnesses: \_\_\_\_\_  
\_\_\_\_\_

Field Book: \_\_\_\_\_ Page: \_\_\_\_\_

G (SOUTHWEST CORNER)

Date Located: \_\_\_\_\_  
By: \_\_\_\_\_  
Monument Description: \_\_\_\_\_  
Monument Witnesses: \_\_\_\_\_  
\_\_\_\_\_

Field Book: \_\_\_\_\_ Page: \_\_\_\_\_

B (NORTH QUARTER CORNER)

Date Located: \_\_\_\_\_  
By: \_\_\_\_\_  
Monument Description: \_\_\_\_\_  
Monument Witnesses: \_\_\_\_\_  
\_\_\_\_\_

Field Book: \_\_\_\_\_ Page: \_\_\_\_\_

H (SOUTH QUARTER CORNER)

Date Located: \_\_\_\_\_  
By: \_\_\_\_\_  
Monument Description: \_\_\_\_\_  
Monument Witnesses: \_\_\_\_\_  
\_\_\_\_\_

Field Book: \_\_\_\_\_ Page: \_\_\_\_\_

C (NORTHEAST CORNER)

Date Located: \_\_\_\_\_  
By: \_\_\_\_\_  
Monument Description: \_\_\_\_\_  
Monument Witnesses: \_\_\_\_\_  
\_\_\_\_\_

Field Book: \_\_\_\_\_ Page: \_\_\_\_\_

I (SOUTHEAST CORNER)

Date Located: \_\_\_\_\_  
By: \_\_\_\_\_  
Monument Description: \_\_\_\_\_  
Monument Witnesses: \_\_\_\_\_  
\_\_\_\_\_

Field Book: \_\_\_\_\_ Page: \_\_\_\_\_

D (WEST QUARTER CORNER)

Date Located: \_\_\_\_\_  
By: \_\_\_\_\_  
Monument Description: \_\_\_\_\_  
Monument Witnesses: \_\_\_\_\_  
\_\_\_\_\_

Field Book: \_\_\_\_\_ Page: \_\_\_\_\_

ADDITIONAL NOTES

\_\_\_\_\_  
\_\_\_\_\_  
\_\_\_\_\_  
\_\_\_\_\_  
\_\_\_\_\_  
\_\_\_\_\_  
\_\_\_\_\_  
\_\_\_\_\_  
\_\_\_\_\_  
\_\_\_\_\_